

HIGH BRIGHTNESS

MARBELLA PRO

FLEXIBLE STRIP

Ref: 33.192

RGB + W (3000°K)

RGB+W flexible led strip "PRO"

IP20 with 60 leds/metre 5050SMD.

Requires use with led profile to permit dissipation.

Heat dissipation tape included.

White colour (included in led chip).

10mm PCB

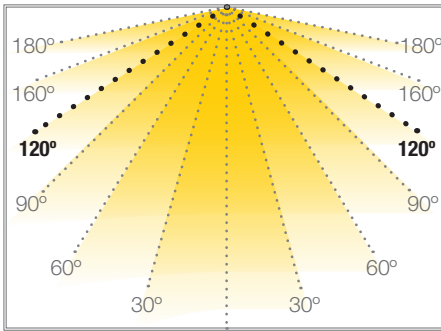
Daily recommended use: 18h

Maximum connection in open circuit: 6m

Maximum connection in closed circuit: 12m

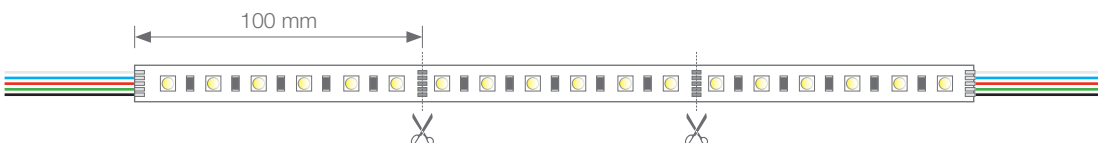
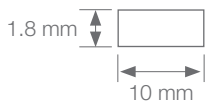
Estimated lifespan: 50000h *

* Depending on the dissipation of the profile, the daily working hours and the external environmental working temperature



Power (W)	19W/m
Voltage (V)	24V
Led type	SMD5050
Lumens (white)	800 Lm/m
CRI	>75
Light emission	120°
Waterproofing	IP20
N° leds/m	60
Measurements	5000x10x1.8mm
Cuttable	every 100mm
PCB	10mm
Working temperature	-20°C / +40°C
Sequencer	not included
Apt for	indoor
Packaging	1 roll/5m
Guarantee	3 years

Aprobado por: 

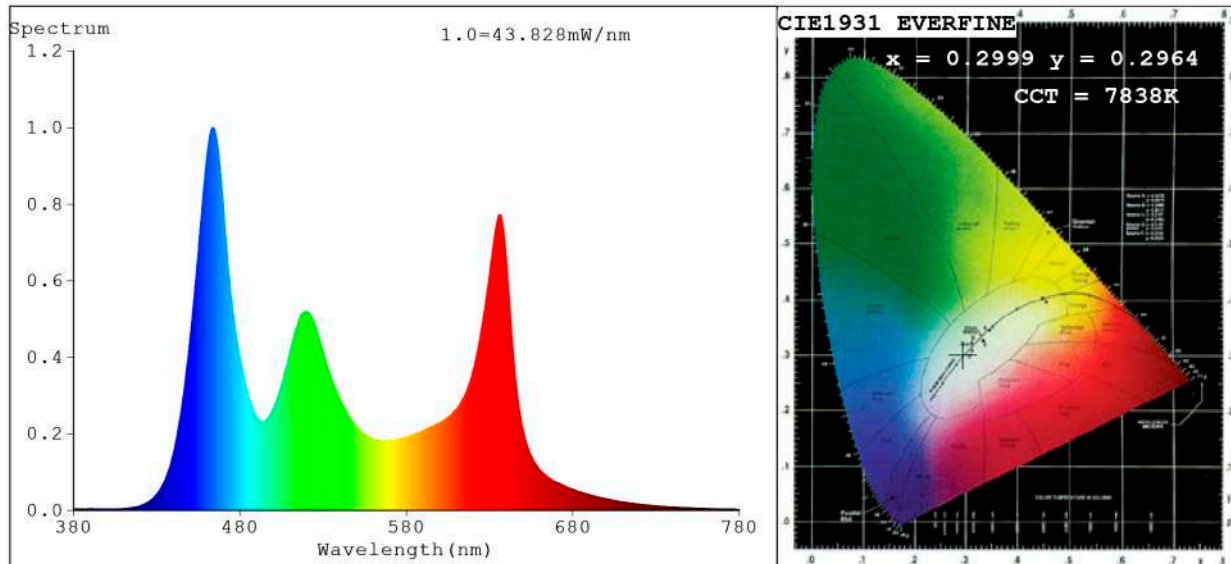


BARCELONA
C/ Carles Buigues, 13
08420 Canovelles
Info@luznegra.net
Tel: +34 938 402 598

MADRID
C/ Adaptación, 27
28906 Getafe
centro@luznegra.net
Tel: +34 916 416 081

PARIS
113 Avenue Joffre
77450 Esbly
france@luznegra.net
Tel: +33 (0) 160 426 585

Spectrum Test Report



Color Parameters:

Chromaticity Coordinate: $x=0.2999$ $y=0.2964$ / $u'=0.2013$ $v'=0.4478$
 CCT=7838K (Duv=-0.0072) Dominant WL:Ld =475.0nm Purity=15.0%
 Ratio:R=20.9% G=70.1% B=9.0%; Peak WL:Lp=463.5nm FWHM=25.2nm
 Render Index:Ra=64.0 CRI=57.5 TM30:Rf=69 Rg=111
 R1 =51 R2 =71 R3 =89 R4 =61 R5 =60 R6 =66 R7 =76
 R8 =37 R9 =0 R10=37 R11=52 R12=61 R13=54 R14=90 R15=42

Photo Parameters:

Flux = 950.8 lm Eff. : 50.20 lm/W Fe = 3.784 W Scotopic:2822.8 S/P:2.9687

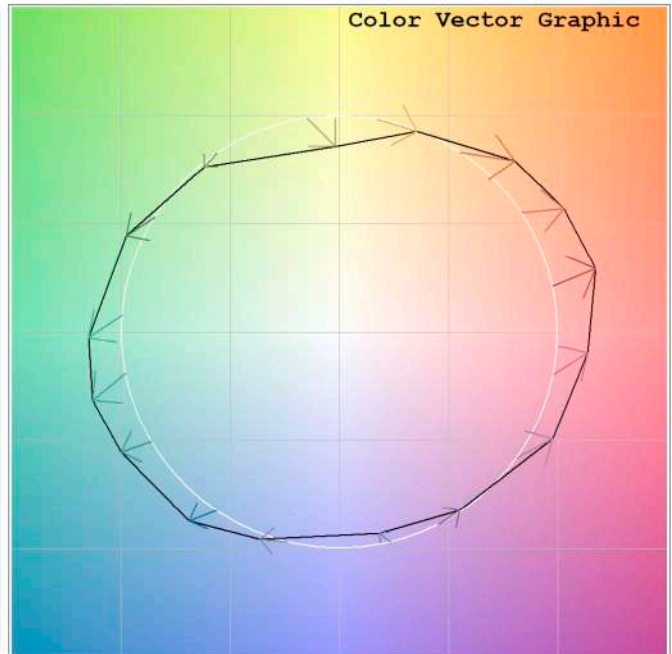
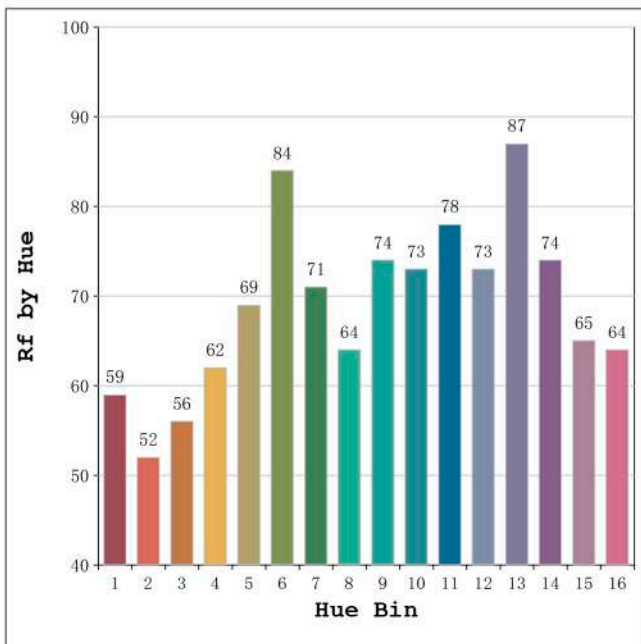
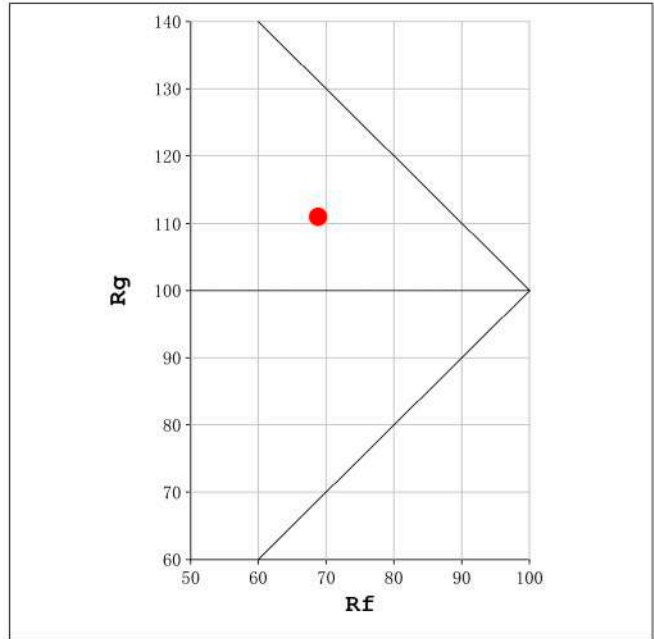
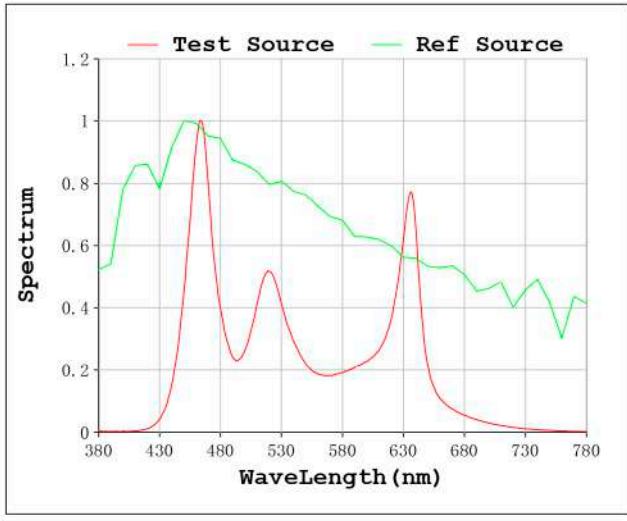
Electrical parameters:

V = 24.397 V I = 0.7764 A P = 18.94 W PF = 1.000

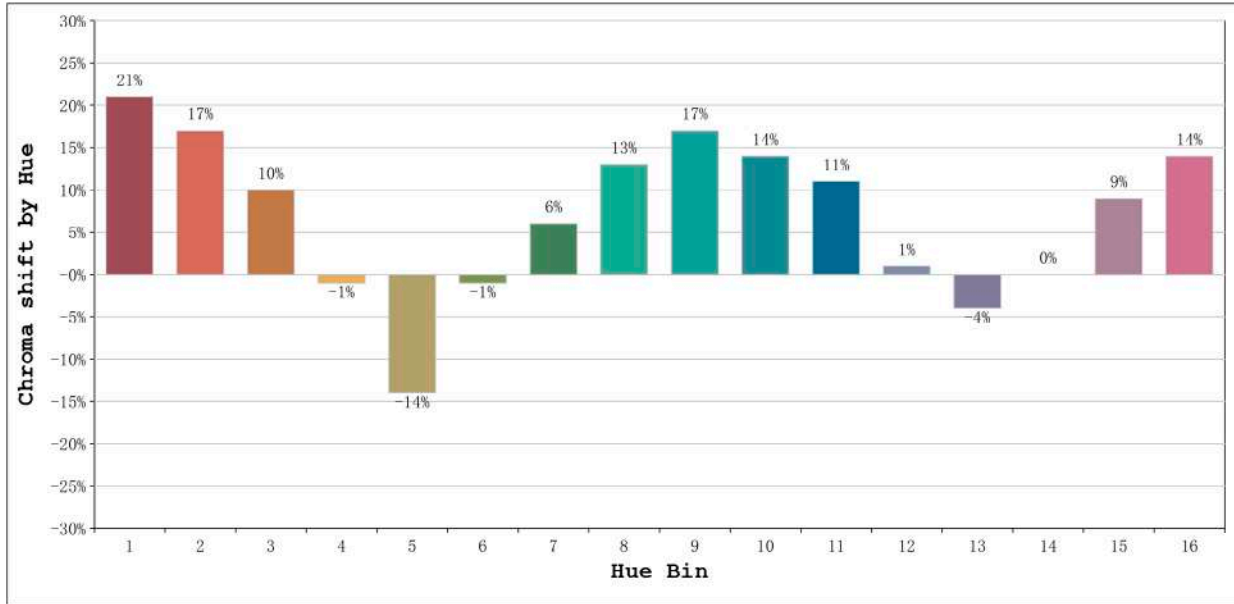
Status: Integral T = 438 ms Ip = 33062 (50%)

Model:Ecoled Marbella pro R+G+B+W Number: 33.192
 Tester:Sergio Carneros Date:26-5-2021
 Temperature:21Deg Humidity:57%
 Manufacturer:Luz Negra S.L Remarks:100cm de tira flexible

Rf: 69 CCT: 7838 K u': 0.2013
Rg: 111 Duv: -0.0072 v': 0.4478



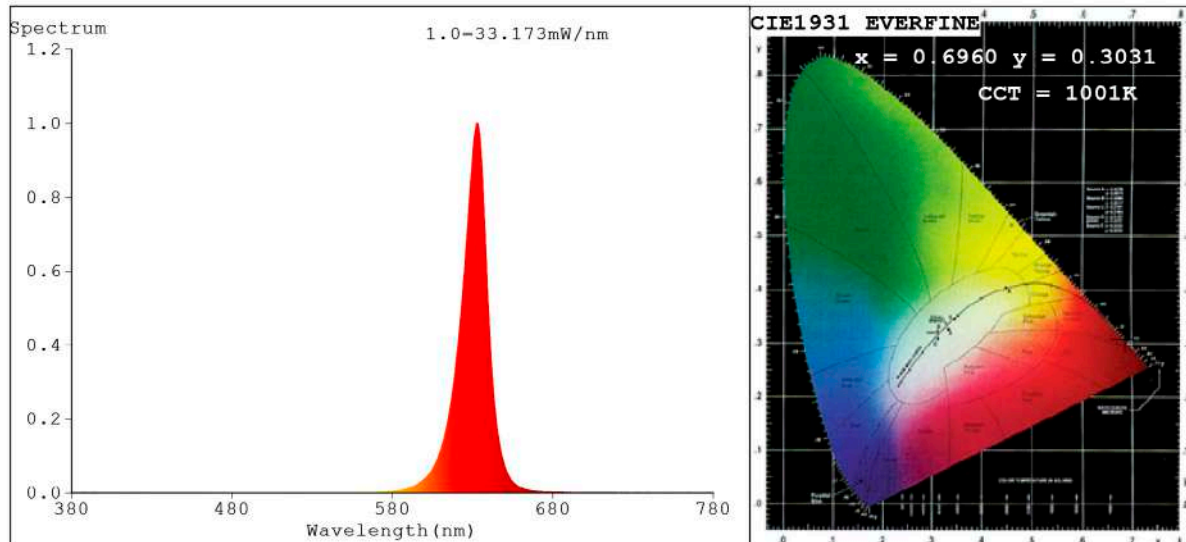
Model:Ecoled Marbella pro R+G+B+W Number: 33.192
 Tester:Sergio Carneros Date:26-5-2021
 Temperature:21Deg Humidity:57%
 Manufacturer:Luz Negra S.L Remarks:100cm de tira flexible



Hue Bin	Hue Angle	Rf	Graphic shift(%)	
			Chroma	Hue
1	0.0° - 22.5°	59	21	4
2	22.5° - 45.0°	52	17	-8
3	45.0° - 67.5°	56	10	-22
4	67.5° - 90.0°	62	-1	-18
5	90.0° - 112.5°	69	-14	-9
6	112.5° - 135.0°	84	-1	8
7	135.0° - 157.5°	71	6	14
8	157.5° - 180.0°	64	13	14
9	180.0° - 202.5°	74	17	9
10	202.5° - 225.0°	73	14	-3
11	225.0° - 247.5°	78	11	-7
12	247.5° - 270.0°	73	1	-11
13	270.0° - 292.5°	87	-4	-3
14	292.5° - 315.0°	74	0	12
15	315.0° - 337.5°	65	9	16
16	337.5° - 360.0°	64	14	13

Model:Ecoled Marbella pro R+G+B+W Number: 33.192
 Tester:Sergio Carneros Date:26-5-2021
 Temperature:21Deg Humidity:57%
 Manufacturer:Luz Negra S.L Remarks:100cm de tira flexible

Spectrum Test Report



Color Parameters:

Chromaticity Coordinate: $x=0.6960$ $y=0.3031$ / $u'=0.5307$ $v'=0.5201$
 CCT=1001K (Duv=-0.0832) Dominant WL: $L_d = 622.8\text{nm}$ Purity=99.8%
 Ratio: R=95.8% G=4.2% B=0.0% ; Peak WL: $L_p = 632.6\text{nm}$ FWHM=16.8nm
 Render Index: Ra=27.9 CRI=33.4 TM30: Rf=22 Rg=-1
 R1 =9 R2 =79 R3 =33 R4 =0 R5 =4 R6 =90 R7 =8
 R8 =0 R9 =0 R10=73 R11=0 R12=79 R13=31 R14=61 R15=0

Photo Parameters:

Flux = 129.9 lm Eff. : 30.72 lm/W Fe = 680.1 mW Scotopic: 7.0098 S/P: 0.053963

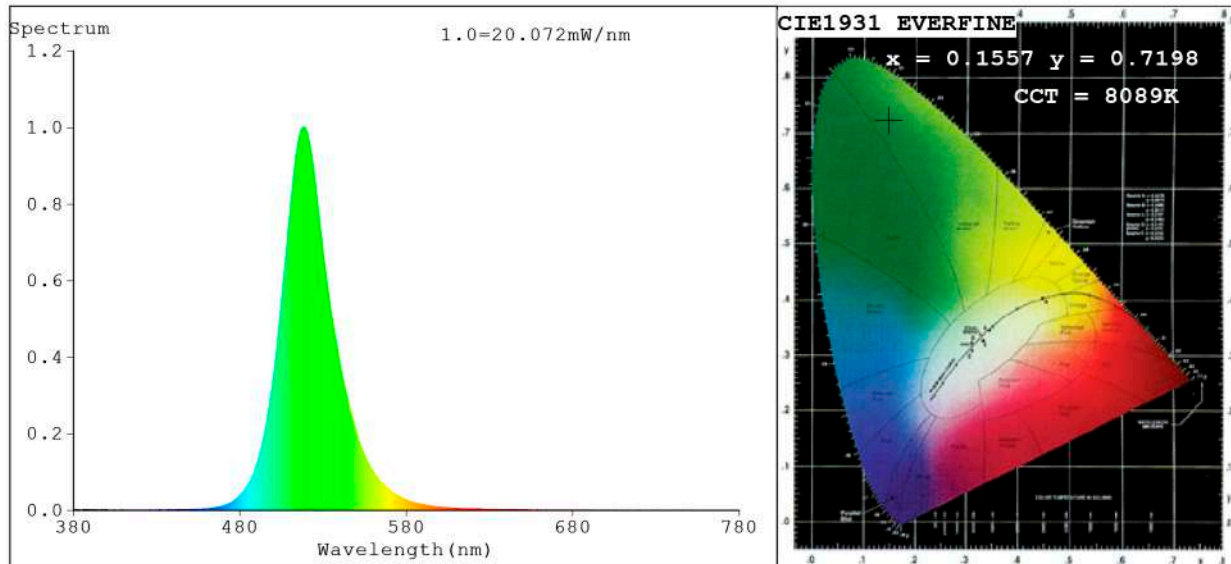
Electrical parameters:

V = 24.397 V I = 0.1733 A P = 4.228 W PF = 1.000

Status: Integral T = 883 ms Ip = 52689 (80%)

Model: Ecoled Marbella pro R	Number: 33.192
Tester: Sergio Carneros	Date: 26-5-2021
Temperature: 21Deg	Humidity: 57%
Manufacturer: Luz Negra S.L	Remarks: 100cm de tira flexible

Spectrum Test Report



Color Parameters:

Chromaticity Coordinate: $x=0.1557$ $y=0.7198$ / $u'=0.0550$ $v'=0.5720$
 CCT=8089K (Duv=0.1609) Dominant WL:Ld =523.9nm Purity=77.9%
 Ratio:R=0.3% G=97.1% B=2.6%; Peak WL:Lp=518.4nm FWHM=31.4nm
 Render Index:Ra=0.0 CRI=2.8 TM30:Rf=0 Rg=8
 R1 =0 R2 =0 R3 =0 R4 =0 R5 =0 R6 =0 R7 =0
 R8 =0 R9 =0 R10=0 R11=0 R12=0 R13=0 R14=40 R15=0

Photo Parameters:

Flux = 353.7 lm Eff. : 73.41 lm/W Fe = 756.0 mW Scotopic:1065.3 S/P:3.012

Electrical parameters:

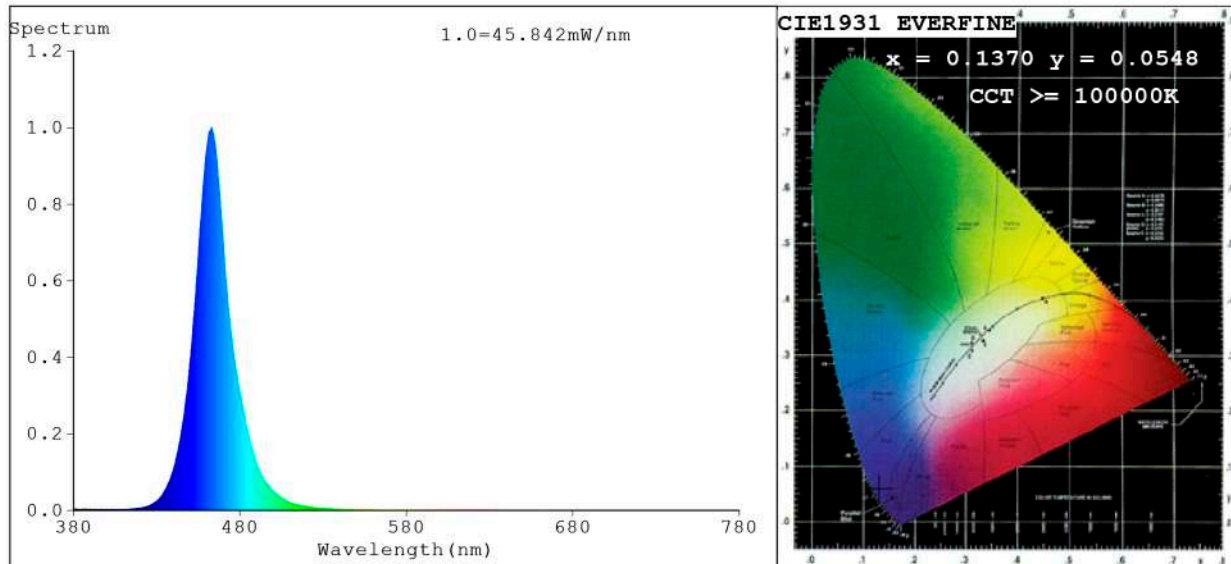
V = 24.397 V I = 0.1975 A P = 4.818 W PF = 1.000

Status: Integral T = 1000 ms Ip = 45660 (70%)

Model:Ecoled Marbella pro G
 Tester:Sergio Carneros
 Temperature:21Deg
 Manufacturer:Luz Negra S.L

Number: 33.192
 Date:26-5-2021
 Humidity:57%
 Remarks:100cm de tira flexible

Spectrum Test Report



Color Parameters:

Chromaticity Coordinate: $x=0.1370$ $y=0.0548$ $u'=0.1620$ $v'=0.1458$
 CCT=100000K (Duv=0.1698) Dominant WL:Ld =467.1nm Purity=97.1%
 Ratio:R=0.4% G=14.9% B=84.8%; Peak WL:Lp=462.9nm FWHM=21.4nm
 Render Index:Ra=0.2 CRI=0.1 TM30:Rf=0 Rg=-36
 R1 =0 R2 =0 R3 =0 R4 =0 R5 =2 R6 =0 R7 =0
 R8 =0 R9 =0 R10=0 R11=0 R12=0 R13=0 R14=0 R15=0

Photo Parameters:

Flux = 78.16 lm Eff. : 16.30 lm/W Fe = 1.230 W Scotopic:1282.4 S/P:16.408

Electrical parameters:

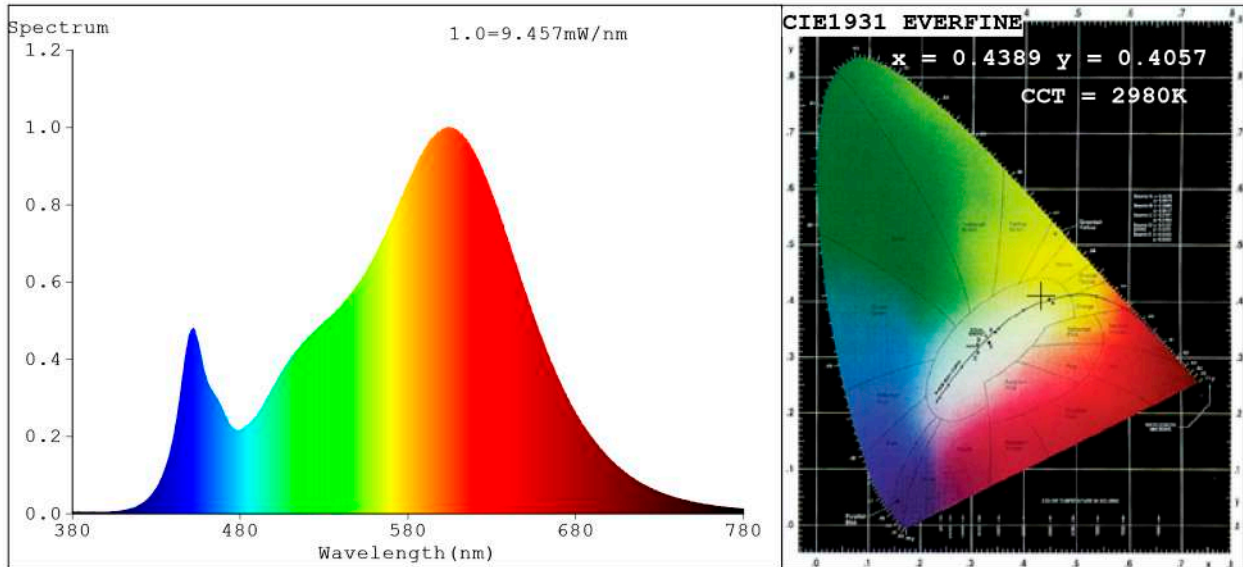
V = 24.397 V I = 0.1965 A P = 4.794 W PF = 1.000

Status: Integral T = 500 ms Ip = 39212 (60%)

Model:Ecoled Marbella pro B
 Tester:Sergio Carneros
 Temperature:21Deg
 Manufacturer:Luz Negra S.L

Number: 33.192
 Date:26-5-2021
 Humidity:57%
 Remarks:100cm de tira flexible

Spectrum Test Report



Color Parameters:

Chromaticity Coordinate: $x=0.4389$ $y=0.4057$ / $u'=0.2512$ $v'=0.5223$
 CCT=2980K (Duv=0.0004) Dominant WL: $\lambda_d = 582.8\text{nm}$ Purity=53.5%
 Ratio: R=23.2% G=74.1% B=2.7%; Peak WL: $\lambda_p = 603.9\text{nm}$ FWHM=124.1nm
 Render Index: Ra=83.1 CRI=78.0 TM30: Rf=83 Rg=95
 R1 =82 R2 =92 R3 =96 R4 =81 R5 =82 R6 =91 R7 =82
 R8 =59 R9 =7 R10=82 R11=81 R12=74 R13=84 R14=98 R15=74

Photo Parameters:

Flux = 456.0 lm Eff. : 87.33 lm/W Fe = 1.380 W Scotopic: 616.5 S/P: 1.3521

Electrical parameters:

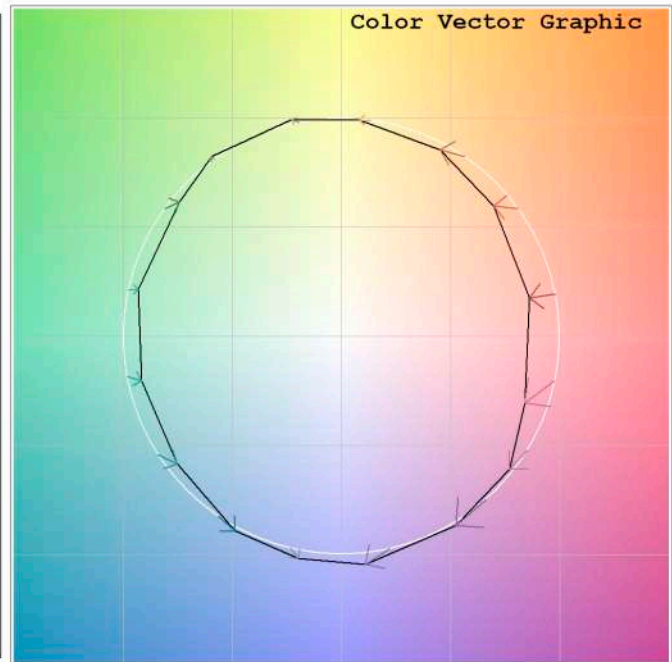
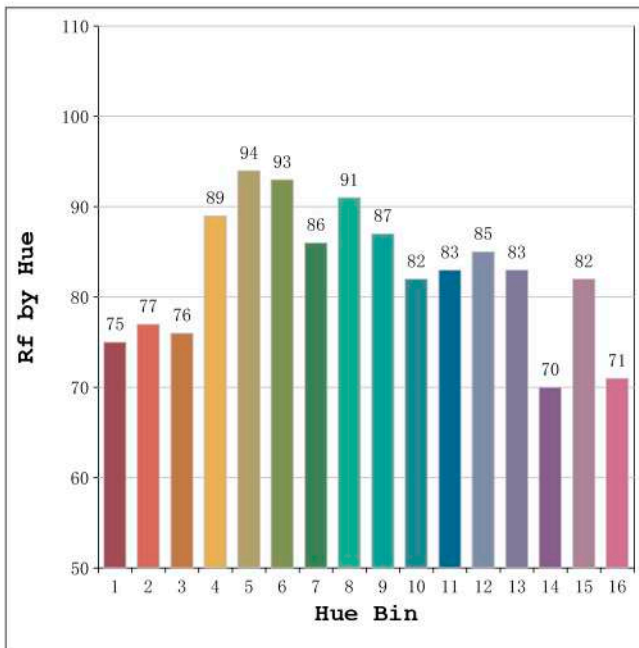
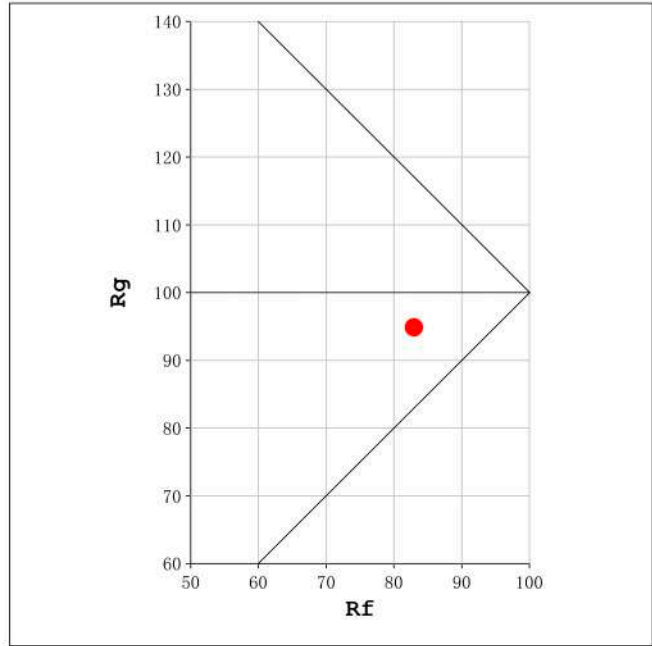
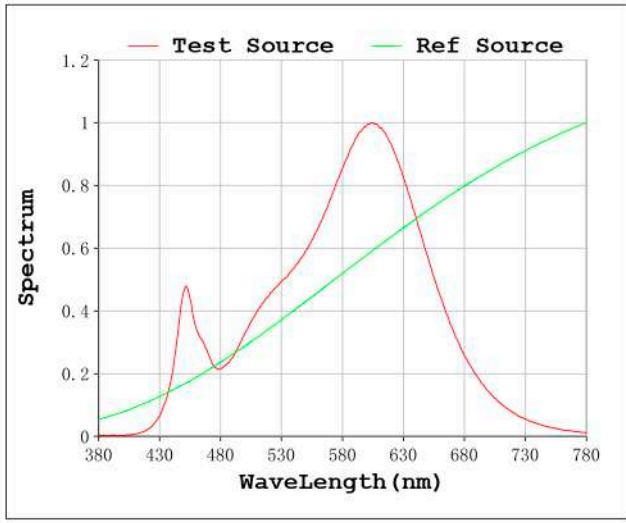
V = 24.397 V I = 0.2140 A P = 5.221 W PF = 1.000

Status: Integral T = 2604 ms Ip = 51463 (79%)

Model: Ecoled Marbella pro W
 Tester: Sergio Carneros
 Temperature: 21Deg
 Manufacturer: Luz Negra S.L

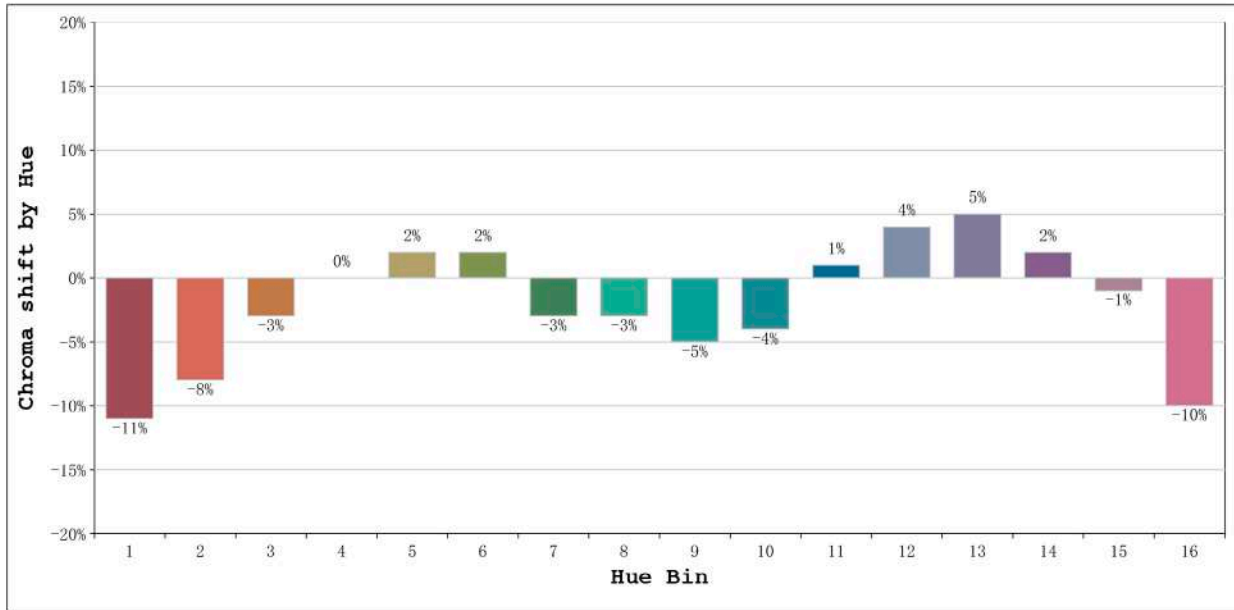
Number: 33.192
 Date: 26-5-2021
 Humidity: 57%
 Remarks: 100cm de tira flexible

Rf: 83 CCT: 2980 K u': 0.2512
Rg: 95 Duv: 0.0004 v': 0.5223



Model:Ecoled Marbella pro W
Tester:Sergio Carneros
Temperature:21Deg
Manufacturer:Luz Negra S.L

Number: 33.192
Date:26-5-2021
Humidity:57%
Remarks:100cm de tira flexible



Hue Bin	Hue Angle	Rf	Graphic shift(%)	
			Chroma	Hue
1	0.0° - 22.5°	75	-11	0
2	22.5° - 45.0°	77	-8	7
3	45.0° - 67.5°	76	-3	11
4	67.5° - 90.0°	89	0	5
5	90.0° - 112.5°	94	2	3
6	112.5° - 135.0°	93	2	0
7	135.0° - 157.5°	86	-3	-5
8	157.5° - 180.0°	91	-3	0
9	180.0° - 202.5°	87	-5	3
10	202.5° - 225.0°	82	-4	8
11	225.0° - 247.5°	83	1	10
12	247.5° - 270.0°	85	4	5
13	270.0° - 292.5°	83	5	-11
14	292.5° - 315.0°	70	2	-17
15	315.0° - 337.5°	82	-1	-11
16	337.5° - 360.0°	71	-10	-12

Model:Ecoled Marbella pro W
Tester:Sergio Carneros
Temperature:21Deg
Manufacturer:Luz Negra S.L

Number: 33.192
Date:26-5-2021
Humidity:57%
Remarks:100cm de tira flexible