

HIGH BRIGHTNESS

BARCELONA PRO

FLEXIBLE STRIP

Ref: 32.082

6500°K

Single-coloured "PRO" flexible strip
IP20 with 266 leds/metre 2216SMD.

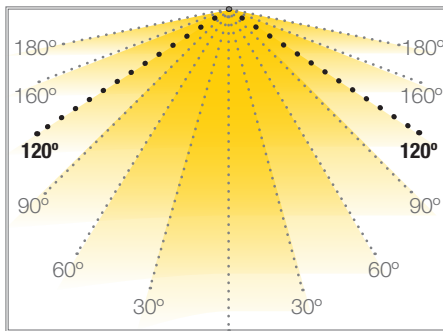
Requires use with led profile to permit dissipation.

Heat dissipation tape included.

8mm PCB

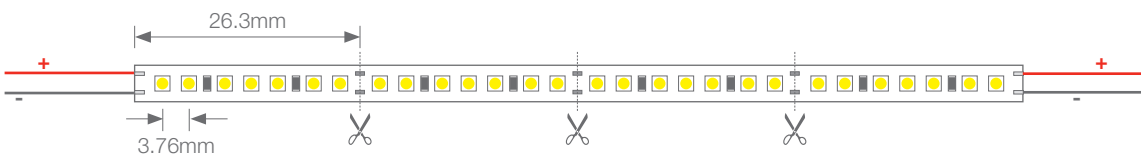
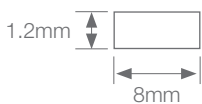
Daily recommended use: 18h
Maximum connection in open circuit: 3m
Maximum connection in closed circuit: 6m
Estimated lifespan: 50000h *

* Depending on the dissipation of the profile, the daily working hours and the external environmental working temperature



Power (W)	19.2W/m
Voltage (V)	24V
Led type	SMD2216
Lumens ^(6500°K)	1700 Lm/m
CRI	>85
Light emission	120°
Waterproofing	IP20
N° leds/m	266
Measurements	5000x8x1.2mm
Cuttable	cada 26.3mm
PCB	8mm
Working temperature	-20°C / +40°C
Apt for	indoor
Packaging	1 roll/5m
Guarantee	3 years

Approved by: 

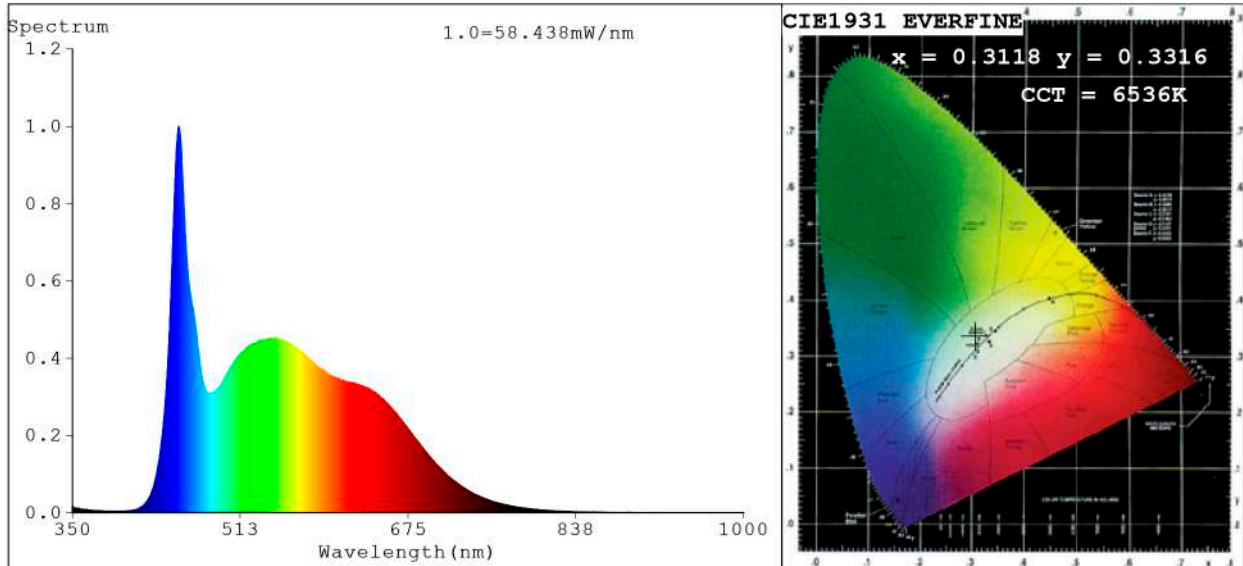


BARCELONA
C/ Carles Buhigues, 13
08420 Canovelles
Info@luznegra.net
Tel: +34 938 402 598

MADRID
C/ Adaptación, 27
28906 Getafe
centro@luznegra.net
Tel: +34 916 416 081

PARIS
113 Avenue Joffre
77450 Esbly
france@luznegra.net
Tel: +33 (0) 160 426 585

Spectrum Test Report



Color Parameters:

Chromaticity Coordinate: $x=0.3118$ $y=0.3316$ / $u'=0.1962$ $v'=0.4696$
 CCT=6536K (Duv=0.0050) Dominant WL:Ld =490.7nm Purity=7.4%
 Ratio:R=14.5% G=79.0% B=6.5%; Peak WL:Lp=453.0nm FWHM=24.0nm
 Render Index:Ra=91.9 CRI=88.3 TM30:Rf=89 Rg=98
 R1 =91 R2 =95 R3 =95 R4 =90 R5 =90 R6 =90 R7 =95
 R8 =89 R9 =71 R10=86 R11=89 R12=63 R13=93 R14=97 R15=90

Photo Parameters:

Flux = 1717 lm Eff. : 104.20 lm/W Fe = 6.243 W

Electrical parameters:

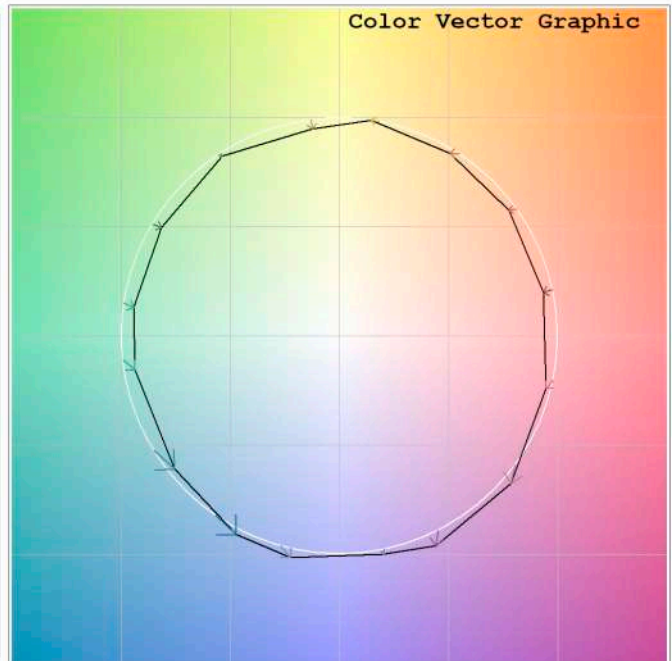
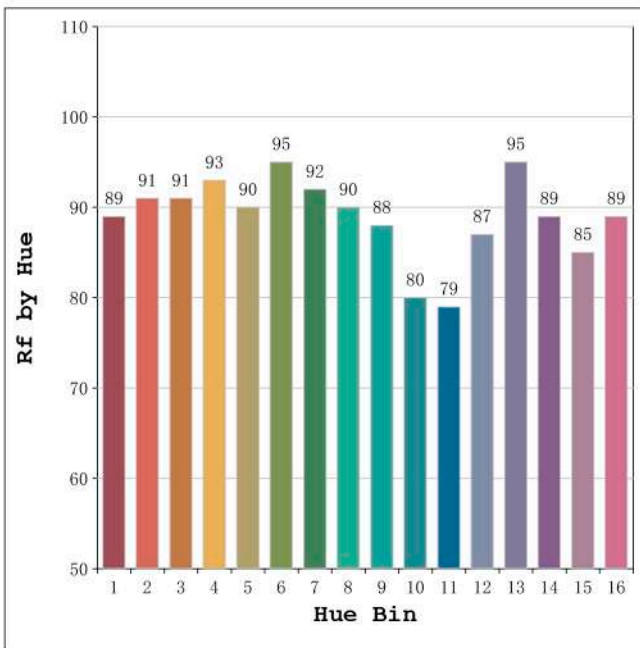
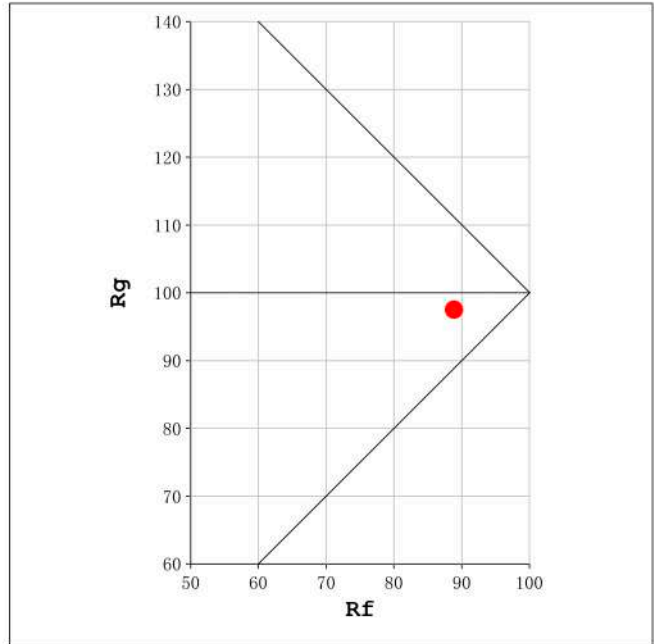
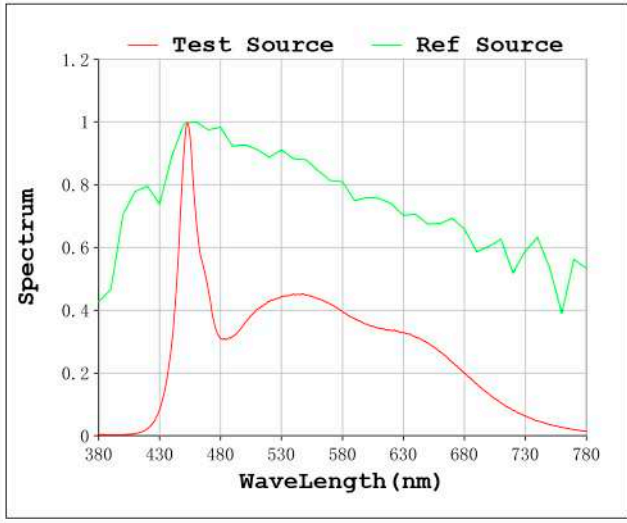
V = 23.998 V I = 0.6868 A P = 16.48 W PF = 1.000

Status: Integral T = 480 ms Ip = 44387 (68%)

Model:Barcelona Pro 6500k
 Tester:Juan Pernia
 Temperature:20Deg
 Manufacturer:LUZNEGRA

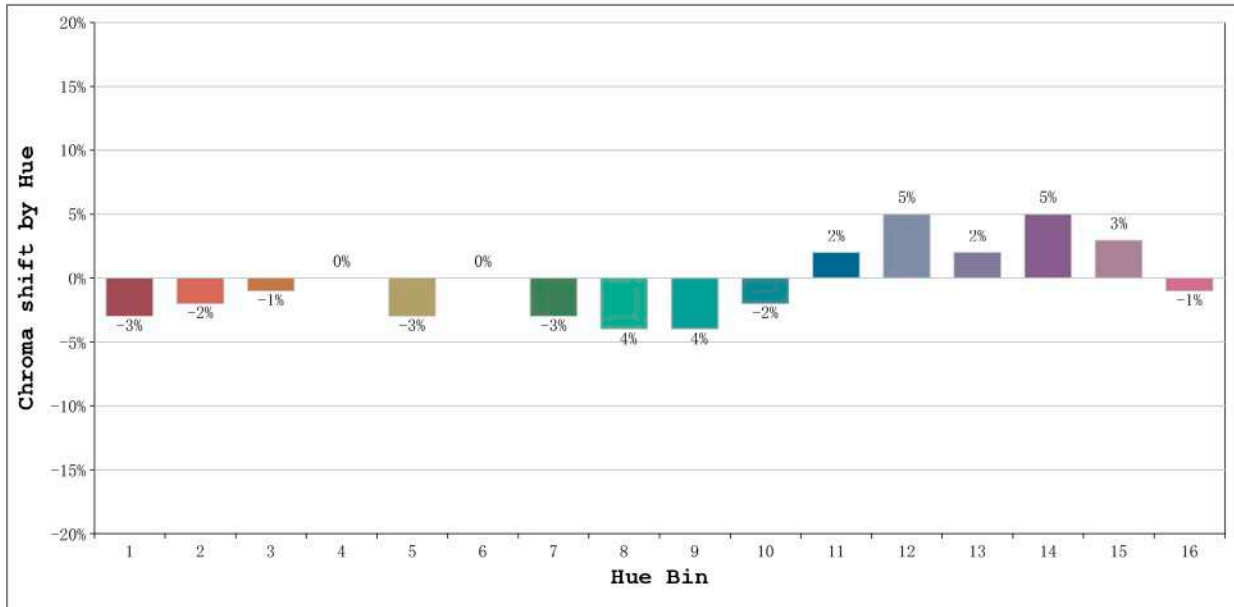
Number:32.082
 Date:2020-03-09 11:25:05
 Humidity:50%
 Remarks:Led stip 100cm.

Rf: 89 CCT: 6536 K u': 0.1962
Rg: 98 Duv: 0.0050 v': 0.4696



Model:Barcelona Pro 6500k
Tester:Juan Pernia
Temperature:20Deg
Manufacturer:LUZNEGRA

Number:32.082
Date:2020-03-09 11:25:05
Humidity:50%
Remarks:Led stip 100cm.



Hue Bin	Hue Angle	Rf	Graphic shift (%)	
			Chroma	Hue
1	0.0° - 22.5°	89	-3	0
2	22.5° - 45.0°	91	-2	2
3	45.0° - 67.5°	91	-1	4
4	67.5° - 90.0°	93	0	4
5	90.0° - 112.5°	90	-3	0
6	112.5° - 135.0°	95	0	0
7	135.0° - 157.5°	92	-3	0
8	157.5° - 180.0°	90	-4	1
9	180.0° - 202.5°	88	-4	6
10	202.5° - 225.0°	80	-2	12
11	225.0° - 247.5°	79	2	13
12	247.5° - 270.0°	87	5	5
13	270.0° - 292.5°	95	2	0
14	292.5° - 315.0°	89	5	-4
15	315.0° - 337.5°	85	3	-7
16	337.5° - 360.0°	89	-1	-3

Model:Barcelona Pro 6500k
 Tester:Juan Pernia
 Temperature:20Deg
 Manufacturer:LUZNEGRA

Number: 32.082
 Date:2020-03-09 11:25:05
 Humidity:50%
 Remarks:Led stip 100cm.