

## HIGH BRIGHTNESS

Ref: 33.003  
Ref: 33.004

4000°K  
2700°K

Single-coloured flexible strip "PRO"

IP20 with 160 leds/metre 2835SMD.

Requires use with led profile to permit dissipation.

### 10mm PCB

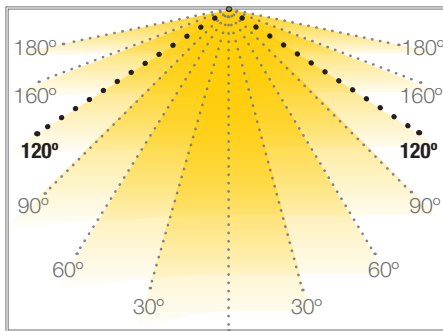
Daily recommended use: 18h

Maximum connection in open circuit: 5m

Maximum connection in closed circuit: 10m

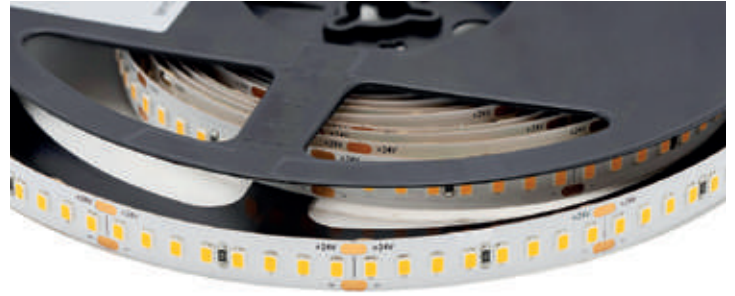
Estimated lifespan: 30000h \*

\* Depending on the dissipation of the profile, the daily working hours and the external environmental working temperature



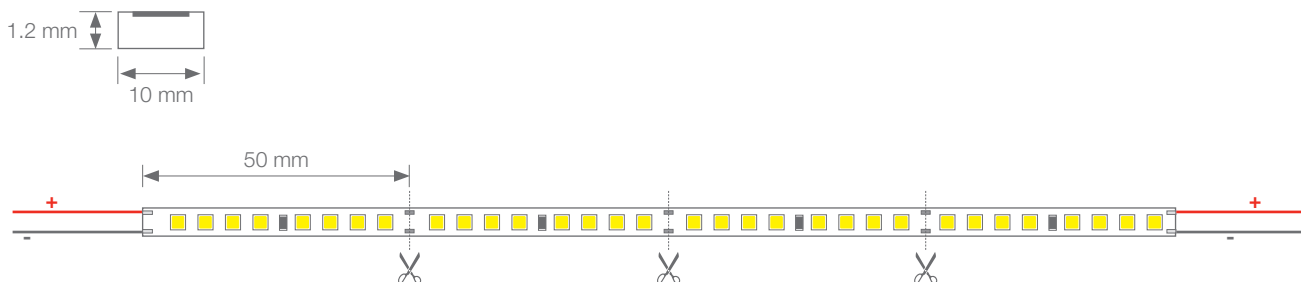
## SEVILLA

## FLEXIBLE STRIP



Power (W)	20W/m
Voltage (V)	24V
Led type	SMD2835
Lumens (4000°K)	2258 Lm/m
Lumens (2700°K)	2017 Lm/m
CRI	>95
Light emission	120°
Waterproofing	IP20
N° leds/m	160
Measurements	5000x10x1.2mm
Cuttable	every 50mm
PCB	10mm
Working temperature	-20°C / +40°C
Apt for	indoor
Packaging	1 roll/5m
Guarantee	3 years

Approved by: 

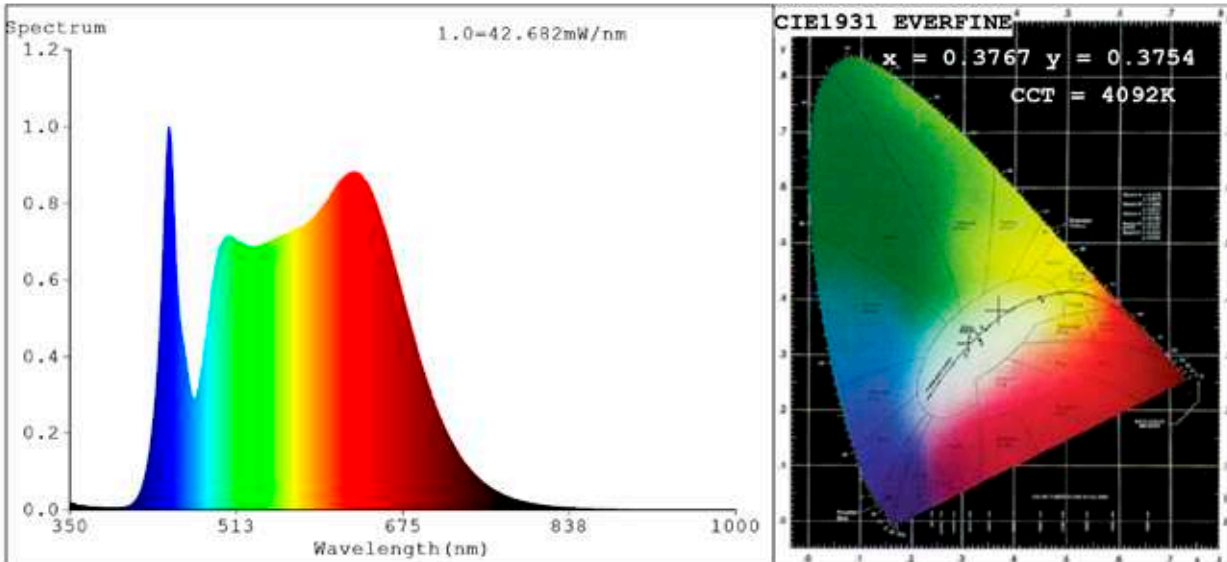


**BARCELONA**  
C/ Carles Buhigues, 13  
08420 Canovelles  
Info@luznegra.net  
Tel: +34 938 402 598

**MADRID**  
C/ Adaptación, 27  
28906 Getafe  
centro@luznegra.net  
Tel: +34 916 416 081

**PARIS**  
113 Avenue Joffre  
77450 Esbly  
france@luznegra.net  
Tel: +33 (0) 160 426 585

**Spectrum Test Report**



**Color Parameters:**

Chromaticity Coordinate:  $x=0.3767$   $y=0.3754$  /  $u'=0.2232$   $v'=0.5004$   
 CCT=4092K (Duv=0.0004) Dominant WL:Ld =578.5nm Purity=25.7%  
 Ratio:R=20.3% G=74.9% B=4.8%;;Peak WL:Lp=446.8nm FWHM=19.3nm  
 Render Index:Ra=98.3 CRI=97.4 TM30:Rf=96 Rg=102  
 R1 =99 R2 =100 R3 =98 R4 =96 R5 =98 R6 =98 R7 =99  
 R8 =98 R9 =96 R10=99 R11=93 R12=91 R13=99 R14=99 R15=99

**Photo Parameters:**

Flux = 2258 lm Eff. : 113.45 lm/W Fe = 8.230 W Scotopic:4286.4 S/P:1.8985

**Electrical parameters:**

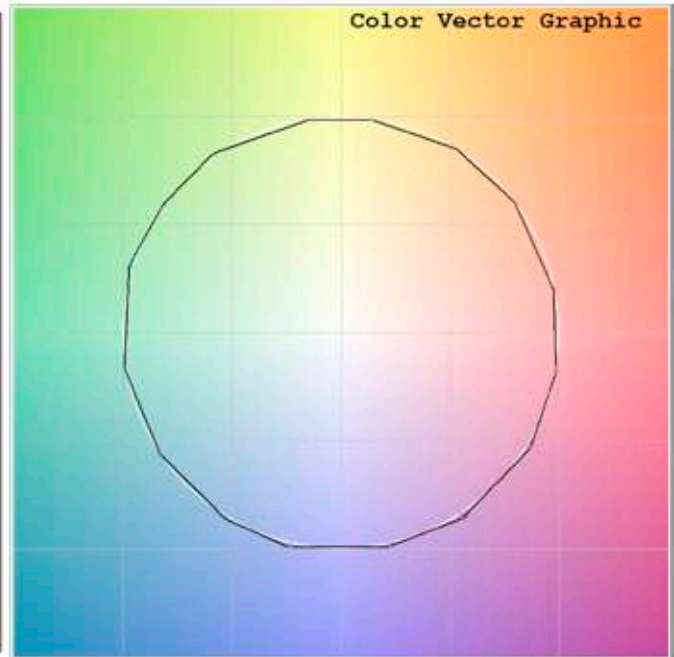
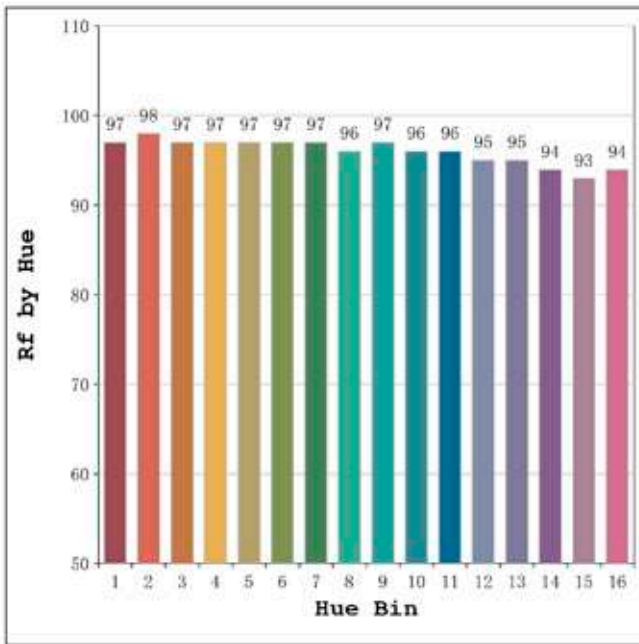
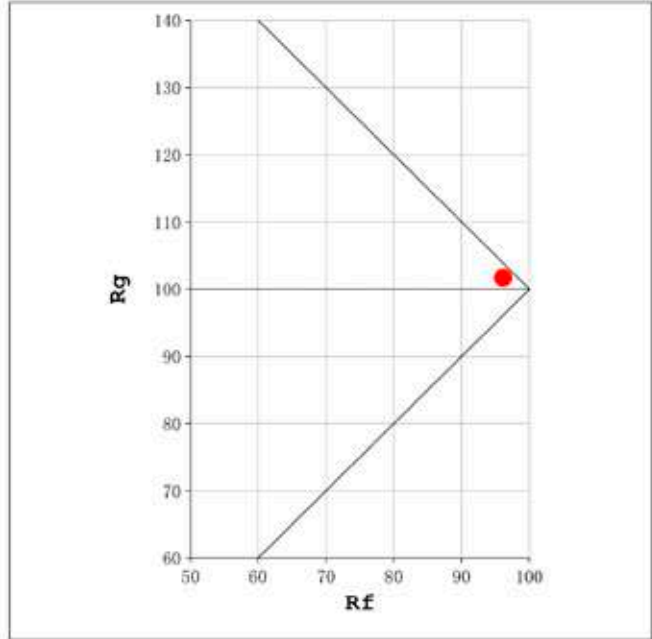
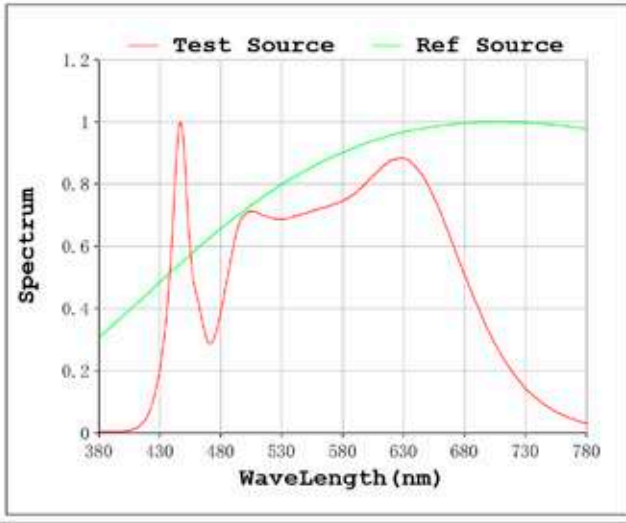
V = 23.998 V I = 0.8293 A P = 19.90 W PF = 1.000

Status: Integral T = 810 ms Ip = 52665 (80%)

Model:Ecoled Sevilla 4000K  
 Tester:Sergio carneros  
 Temperature:25Deg  
 Manufacturer:Luz Negra

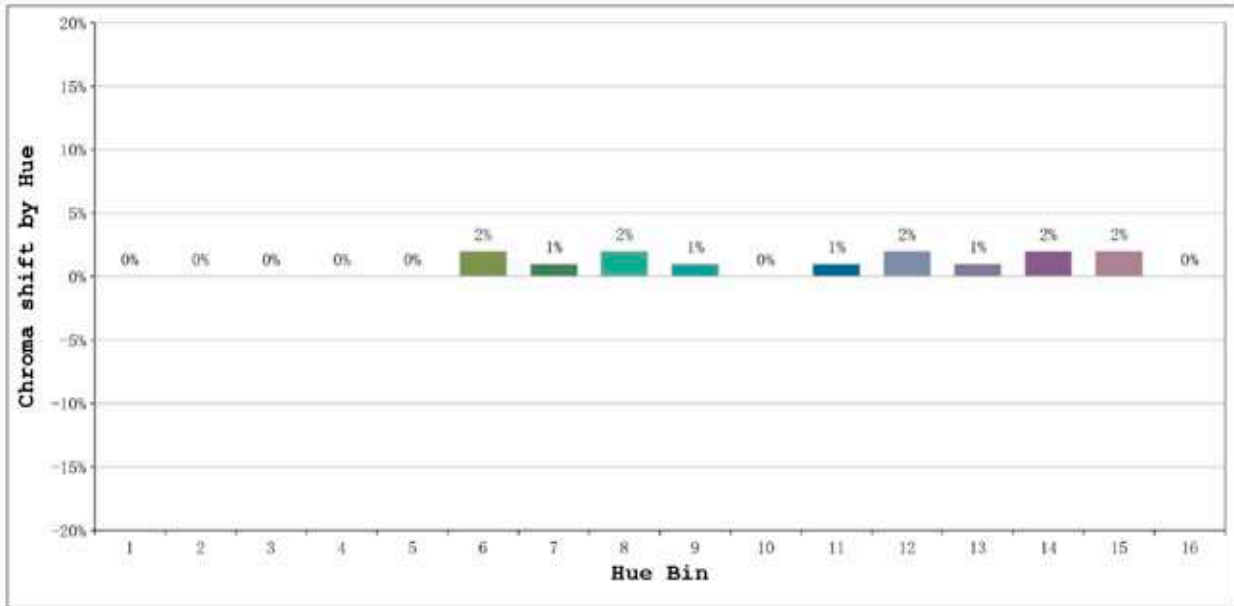
Number: 33.003  
 Date:26-5-2021  
 Humidity:57%  
 Remarks:100cm de tira flexible

Rf: 96      CCT: 4092 K      u': 0.2232  
Rg: 102      Duv: 0.0004      v': 0.5004



Model:Ecoled Sevilla 4000K  
Tester:Sergio careros  
Temperature:25Deg  
Manufacturer:Luz Negra

Number: 33.003  
Date:26-5-2021  
Humidity:57%  
Remarks:100cm de tira flexible

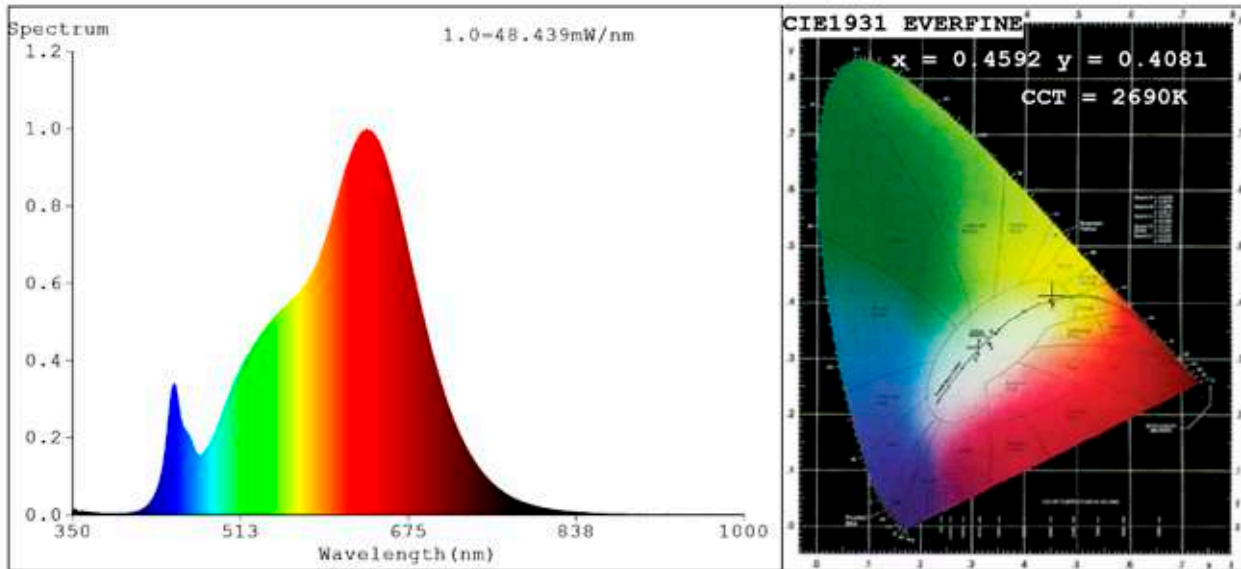


Hue Bin	Hue Angle	Rf	Graphic shift(%)	
			Chroma	Hue
1	0.0° - 22.5°	97	0	0
2	22.5° - 45.0°	98	0	0
3	45.0° - 67.5°	97	0	0
4	67.5° - 90.0°	97	0	0
5	90.0° - 112.5°	97	0	0
6	112.5° - 135.0°	97	2	1
7	135.0° - 157.5°	97	1	0
8	157.5° - 180.0°	96	2	0
9	180.0° - 202.5°	97	1	0
10	202.5° - 225.0°	96	0	-1
11	225.0° - 247.5°	96	1	1
12	247.5° - 270.0°	95	2	0
13	270.0° - 292.5°	95	1	-2
14	292.5° - 315.0°	94	2	-3
15	315.0° - 337.5°	93	2	-3
16	337.5° - 360.0°	94	0	-2

Model:Ecoled Sevilla 4000K  
Tester:Sergio carneros  
Temperature:25Deg  
Manufacturer:Luz Negra

Number: 33.003  
Date:26-5-2021  
Humidity:57%  
Remarks:100cm de tira flexible

**Spectrum Test Report**



**Color Parameters:**

Chromaticity Coordinate:  $x=0.4592$   $y=0.4081$  /  $u'=0.2632$   $v'=0.5263$   
 CCT=2690K (Duv=-0.0009) Dominant WL:Ld =584.5nm Purity=60.3%  
 Ratio:R=27.5% G=70.0% B=2.5%; Peak WL:Lp=634.9nm FWHM=148.2nm  
 Render Index:Ra=97.6 CRI=96.5 TM30:Rf=95 Rg=103  
 R1 =98 R2 =99 R3 =95 R4 =96 R5 =99 R6 =98 R7 =98  
 R8 =97 R9 =93 R10=97 R11=93 R12=93 R13=99 R14=96 R15=99

**Photo Parameters:**

Flux = 2017 lm Eff. : 99.17 lm/W Fe = 7.823 W Scotopic:2653.9 S/P:1.3159

**Electrical parameters:**

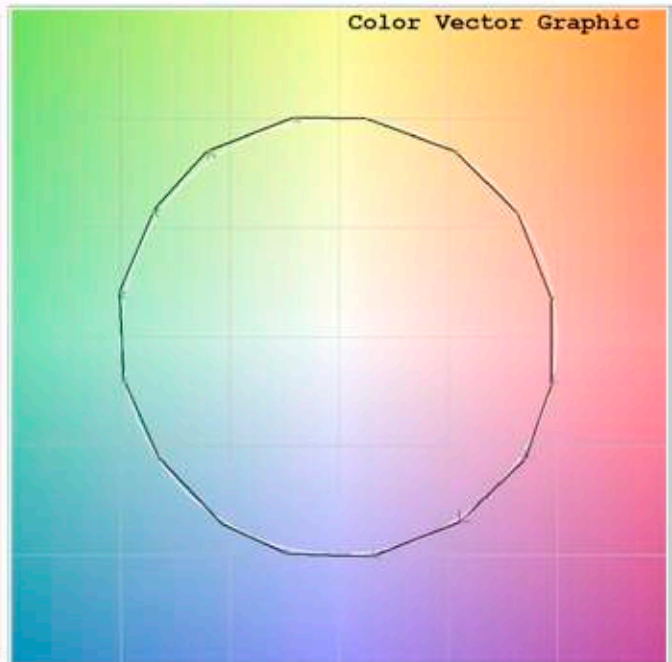
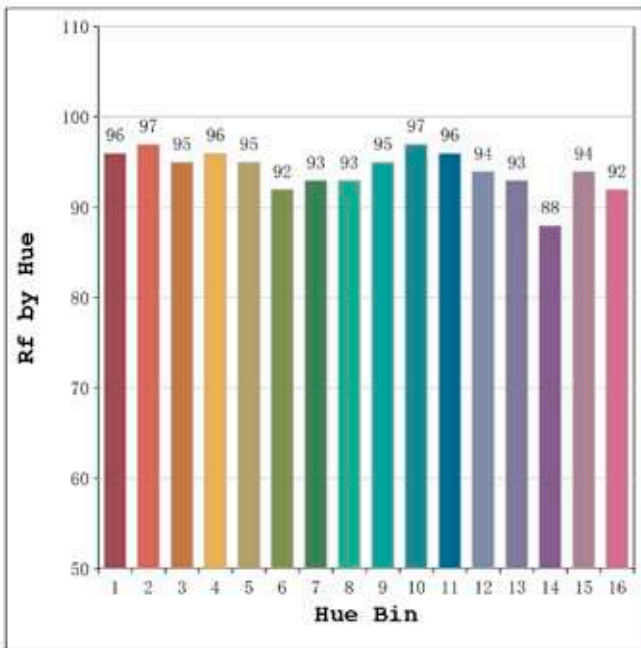
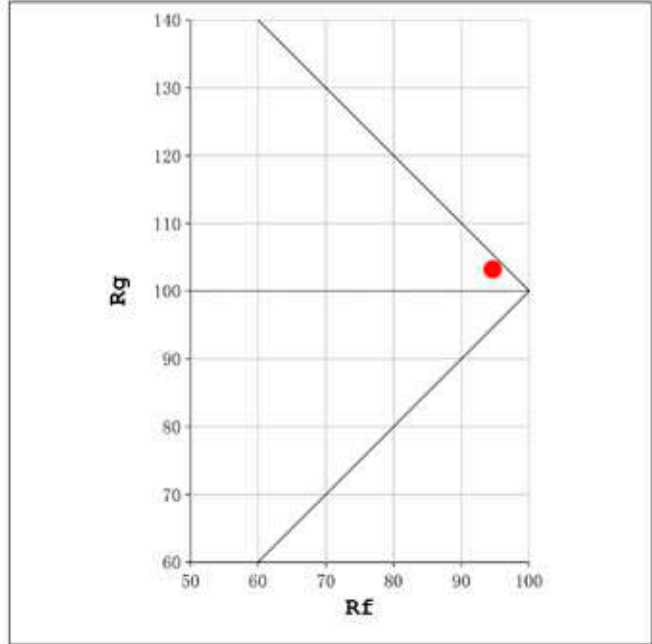
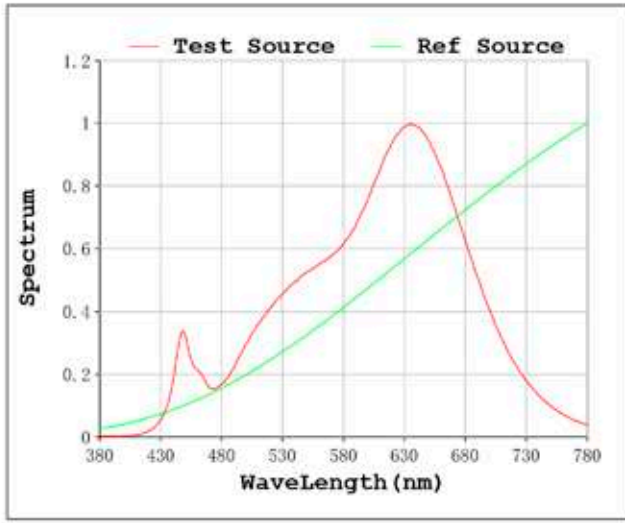
V = 23.998 V I = 0.8475 A P = 20.34 W PF = 1.000

Status: Integral T = 500 ms Ip = 38838 (59%)

Model:Ecoled Sevilla 2700K  
 Tester:Sergio Carneros  
 Temperature:325Deg  
 Manufacturer:Luz Negra

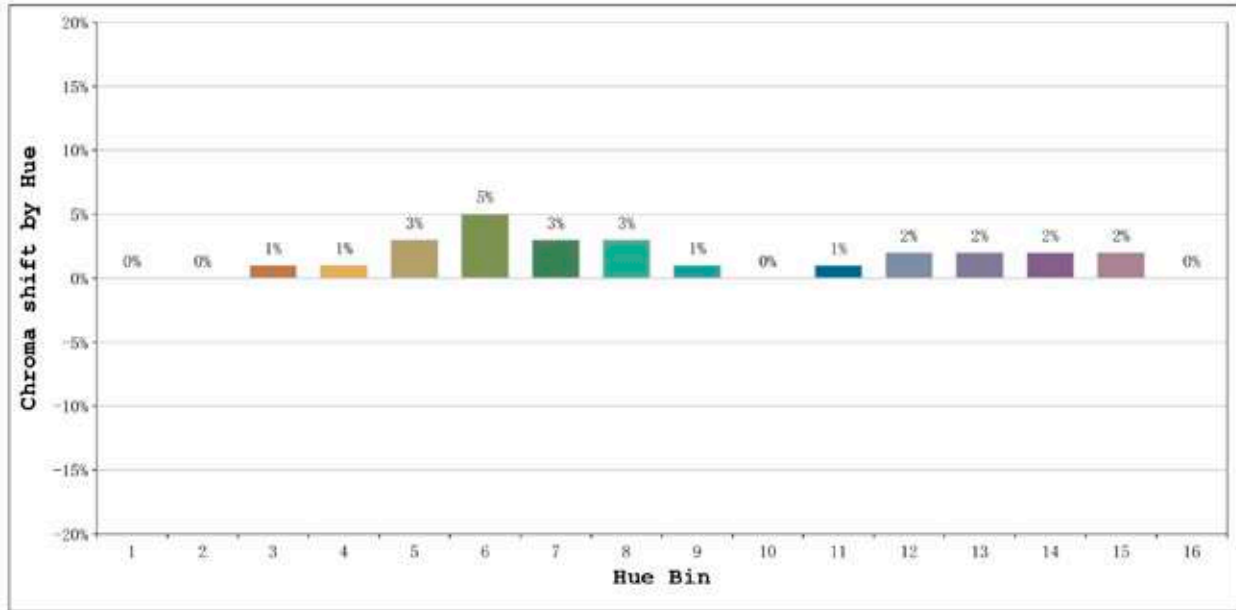
Number: 33.004  
 Date:26-5-2021  
 Humidity:57%  
 Remarks:100cm de tira flexible

Rf: 95      CCT: 2690 K      u': 0.2632  
Rg: 103      Duv: -0.0009      v': 0.5263



Model:Ecoled Sevilla 2700K  
Tester:Sergio Carneros  
Temperature:325Deg  
Manufacturer:Luz Negra

Number: 33.004  
Date:26-5-2021  
Humidity:57%  
Remarks:100cm de tira flexible



Hue Bin	Hue Angle	Rf	Graphic shift(%)	
			Chroma	Hue
1	0.0° - 22.5°	96	0	0
2	22.5° - 45.0°	97	0	0
3	45.0° - 67.5°	95	1	2
4	67.5° - 90.0°	96	1	1
5	90.0° - 112.5°	95	3	2
6	112.5° - 135.0°	92	5	2
7	135.0° - 157.5°	93	3	-1
8	157.5° - 180.0°	93	3	-2
9	180.0° - 202.5°	95	1	-1
10	202.5° - 225.0°	97	0	0
11	225.0° - 247.5°	96	1	1
12	247.5° - 270.0°	94	2	0
13	270.0° - 292.5°	93	2	-4
14	292.5° - 315.0°	88	2	-6
15	315.0° - 337.5°	94	2	-2
16	337.5° - 360.0°	92	0	-4

Model:Ecoled Sevilla 2700K  
Tester:Sergio Carneros  
Temperature:325Deg  
Manufacturer:Luz Negra

Number: 33.004  
Date:26-5-2021  
Humidity:57%  
Remarks:100cm de tira flexible