

FLEXIBLE TECHNOLOGIE COB CCT

COB IP20

RUBANS LED FLEXIBLES

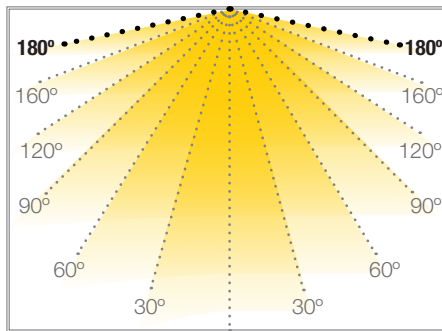
Ref.: 31.136

2700°K - 6000°K

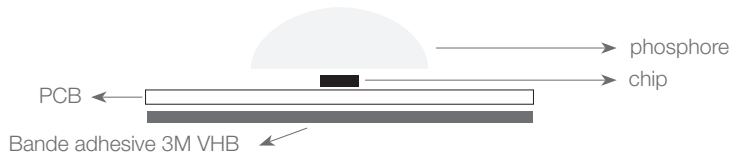
Ruban LED flexible avec technologie COB CCT qui nous permet d'illuminer des luminaires sans l'effet dotting. Pour éviter les problèmes habituels de la technologie COB CCT nos rubans COB ont une petite bande de fer incorporée à l'arrière du PCB qui améliore la dissipation de la chaleur.

Utilisation quotidienne recommandée : 20h.
Connexion max. en circuits ouverts : 5 m.
Connexion max. en circuits fermés : 10 m.
Durée de vie: 50.000h*

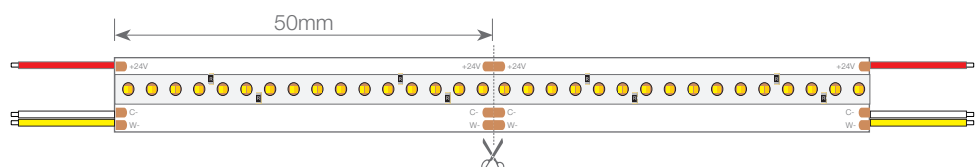
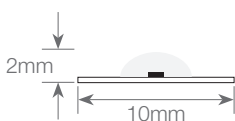
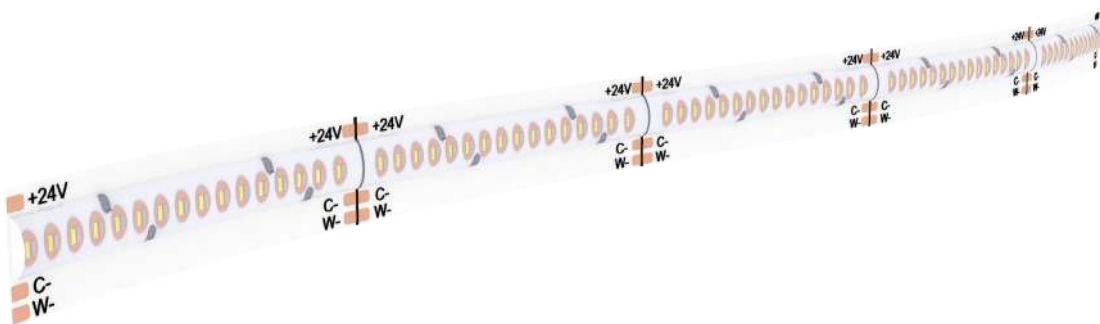
*En fonction de la dissipation thermique du profilé, des heures travaillées par jour et de la température environnementale de travail.



Puissance (W)	20W/m
Voltage (V)	24V
Type de led	COB
Lumens ^{2700K-6000K}	1995 Lm/m
CRI	>80
Émission de la lumière	180°
Étanchéité (IP)	IP20
N° leds/m	640
Mesures	5000x10x2mm
Coupable	chaque 50mm
PCB	10mm
Température de travail	-20°C / +45°C
Apte pour	intérieurs
Emballage	1 rouleaux de 5m
Garantie	2 années



Aprobado por: CE RoHS COMPLIANT

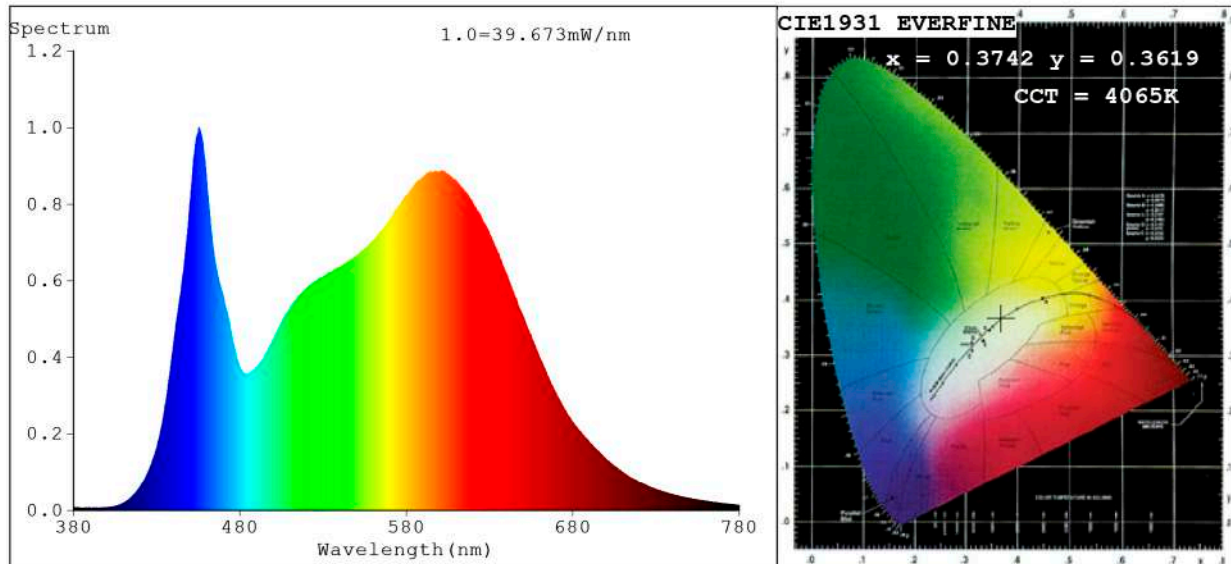


BARCELONA
C/ Carles Buigues, 13
08420 Canovelles
Info@luznegra.net
Tel: +34 938 402 598

MADRID
C/ Adaptación, 27
28906 Getafe
centro@luznegra.net
Tel: +34 916 416 081

PARIS
113 Avenue Joffre
77450 Esbly
france@luznegra.net
Tel: +33 (0) 160 426 585

Spectrum Test Report



Color Parameters:

Chromaticity Coordinate:x=0.3742 y=0.3619/u'=0.2270 v'=0.4939
 CCT=4065K(Duv=-0.0053) Dominant WL:Ld =582.5nm Purity=20.9%
 Ratio:R=19.4% G=76.1% B=4.5%; Peak WL:Lp=455.3nm FWHM=31.0nm
 Render Index:Ra=88.9 CRI=85.0 TM30:Rf=86 Rg=97 Lav=569.2nm
 R1 =90 R2 =96 R3 =96 R4 =87 R5 =90 R6 =92 R7 =87
 R8 =73 R9 =36 R10=90 R11=88 R12=74 R13=92 R14=99 R15=86

Photo Parameters:

Flux = 1995 lm Eff. : 101.24 lm/W Fe = 6.440 W Scotopic:3615.6 S/P:1.8127

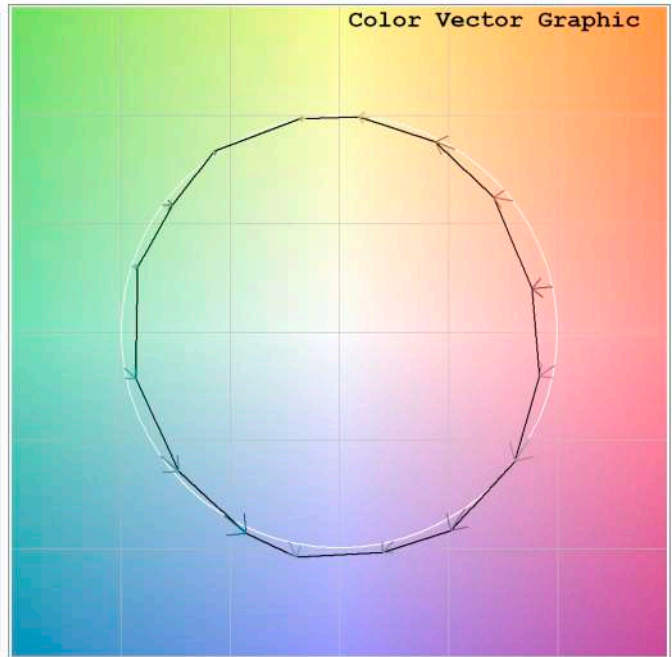
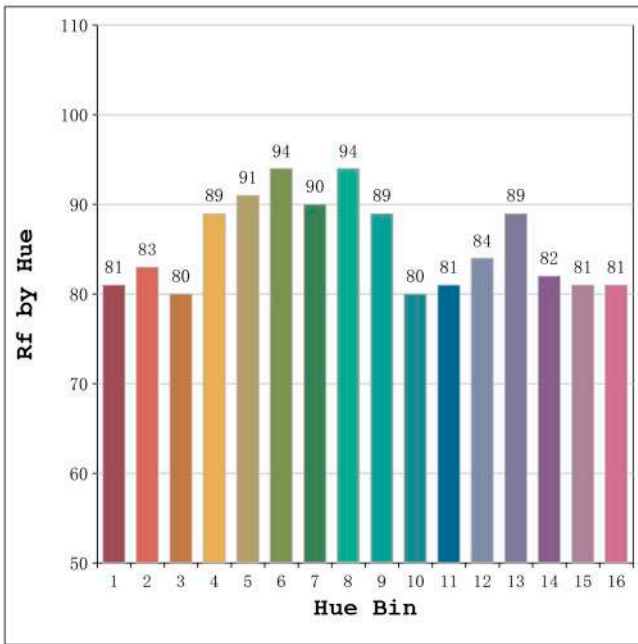
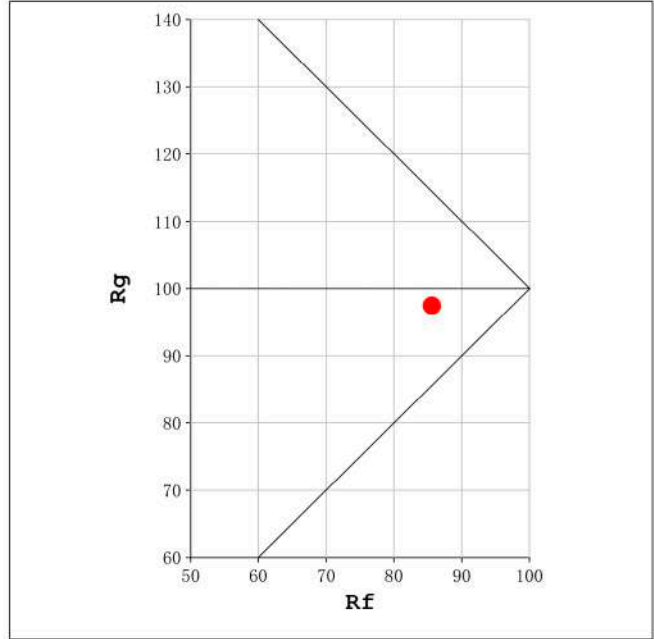
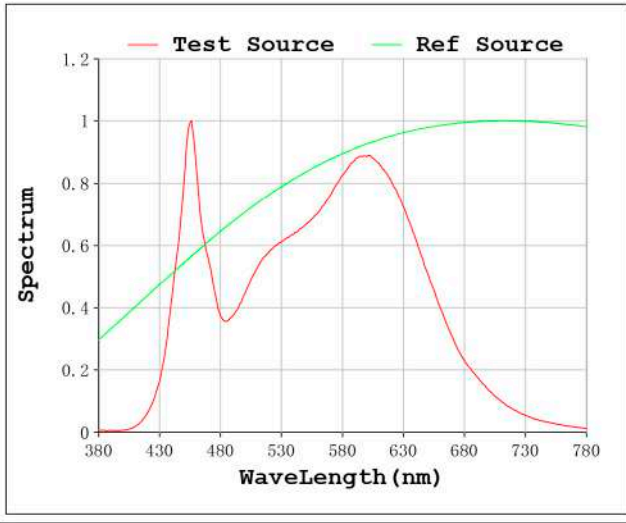
Electrical parameters:

V = 23.998 V I = 0.8210 A P = 19.70 W PF = 1.000

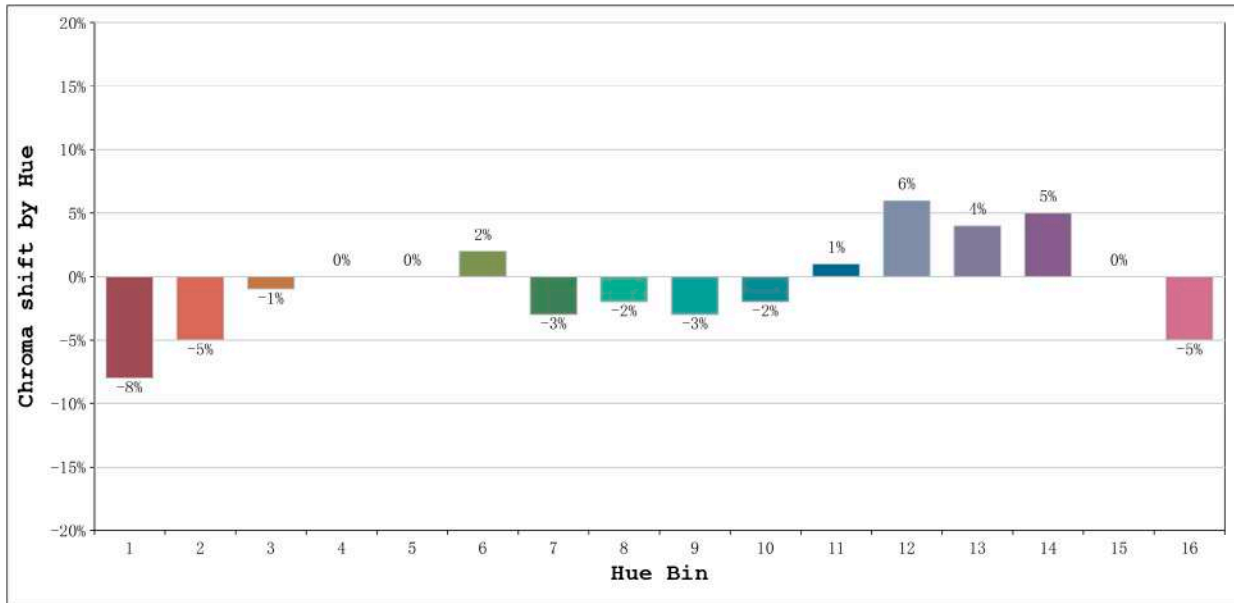
Status: Integral T = 721 ms Ip = 53970 (82%)

Model:Ecoled COB CTT (2700-6000K) Number: 31.136
 Tester:Sergio Carneros Date:8-6-2021
 Temperature:25Deg Humidity:57%
 Manufacturer:Luz Negra Remarks:100cm de tira flexible

Rf: 86 CCT: 4065 K u': 0.2270
Rg: 97 Duv: -0.0053 v': 0.4939



Model:Ecoled COB CTT (2700-6000K) Number: 31.136
 Tester:Sergio Carneros Date:8-6-2021
 Temperature:25Deg Humidity:57%
 Manufacturer:Luz Negra Remarks:100cm de tira flexible



Hue Bin	Hue Angle	Rf	Graphic shift(%)	
			Chroma	Hue
1	0.0° - 22.5°	81	-8	1
2	22.5° - 45.0°	83	-5	6
3	45.0° - 67.5°	80	-1	9
4	67.5° - 90.0°	89	0	5
5	90.0° - 112.5°	91	0	3
6	112.5° - 135.0°	94	2	0
7	135.0° - 157.5°	90	-3	-2
8	157.5° - 180.0°	94	-2	0
9	180.0° - 202.5°	89	-3	5
10	202.5° - 225.0°	80	-2	10
11	225.0° - 247.5°	81	1	13
12	247.5° - 270.0°	84	6	4
13	270.0° - 292.5°	89	4	-5
14	292.5° - 315.0°	82	5	-10
15	315.0° - 337.5°	81	0	-11
16	337.5° - 360.0°	81	-5	-5

Model:Ecoled COB CTT (2700-6000K) Number: 31.136
 Tester:Sergio Carneros Date:8-6-2021
 Temperature:25Deg Humidity:57%
 Manufacturer:Luz Negra Remarks:100cm de tira flexible