

## HIGH BRIGHTNESS

Ref: 33.017      4200°K  
 Ref: 33.018      3200°K  
 Ref: 33.019      2850°K

Single-coloured "PREMIUM RETAIL" flexible strip  
 IP20 with 238 leds/metre 3014SMD.  
 Requires use with led profile to permit dissipation.

**Heat dissipation tape included.**

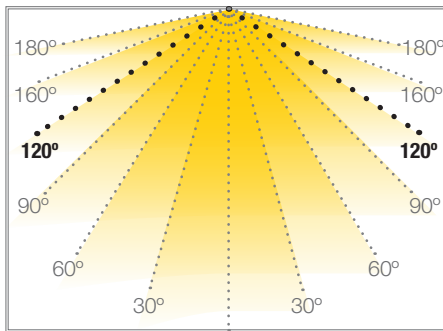
**10mm PCB**

**Current stabiliser.**

**CRI>90**

Daily recommended use: 18h  
 Maximum connection in open circuit: 5m  
 Maximum connection in closed circuit: 10m  
 Estimated lifespan: 50000h \*

\* Depending on the dissipation of the profile, the daily working hours and the external environmental working temperature



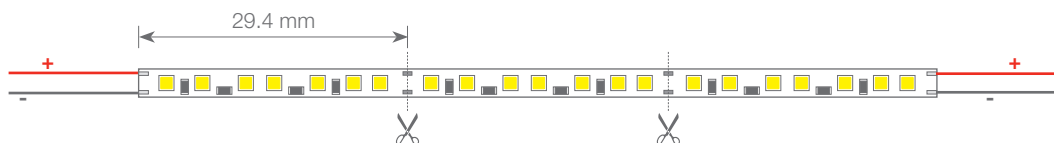
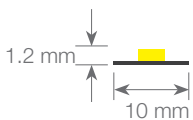
## GOMERA

## FLEXIBLE STRIP



|                     |               |
|---------------------|---------------|
| Power (W)           | 21W/m         |
| Voltage (V)         | 24V           |
| Led type            | SMD3014       |
| Lumens (4200°K)     | 2450 Lm/m     |
| Lumens (3200°K)     | 2300 Lm/m     |
| Lumens (2850°K)     | 2100 Lm/m     |
| CRI                 | >90           |
| Light emission      | 120°          |
| Waterproofing       | IP20          |
| N° leds/m           | 238           |
| Measurements        | 5000x10x1.2mm |
| Cuttable            | every 29.4mm  |
| PCB                 | 10mm          |
| Working temperature | -40°C / +60°C |
| Apt for             | indoor        |
| Packaging           | 1 roll/5m     |
| Guarantee           | 4 years       |

Approved by: 

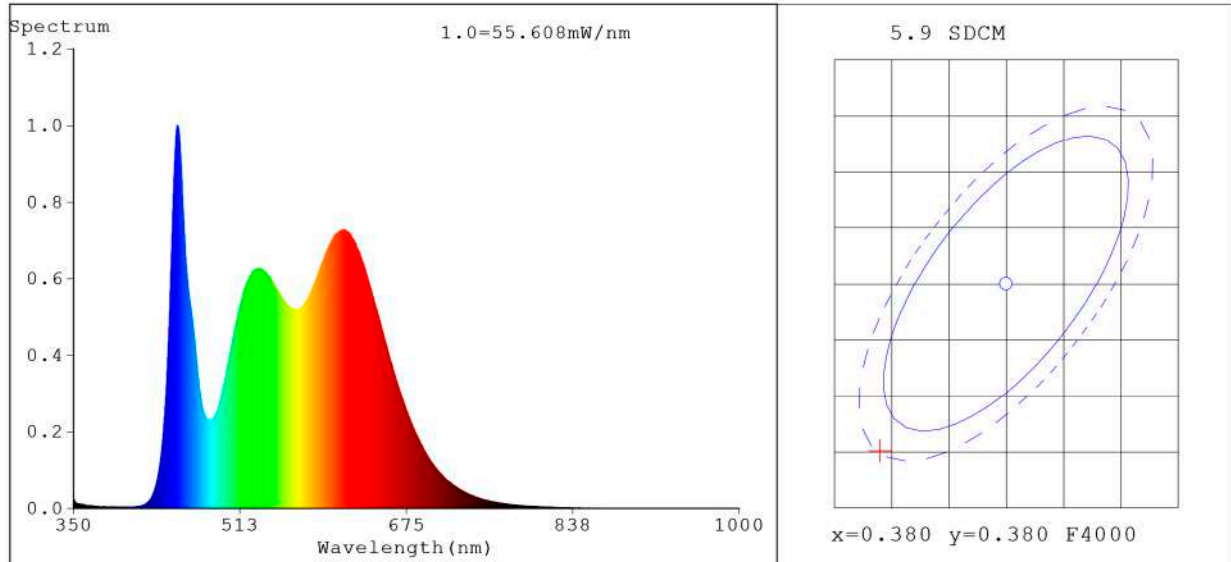


**BARCELONA**  
 C/ Carles Buigues, 13  
 08420 Canovelles  
 Info@luznegra.net  
 Tel: +34 938 402 598

**MADRID**  
 C/ Adaptación, 27  
 28906 Getafe  
 centro@luznegra.net  
 Tel: +34 916 416 081

**PARIS**  
 113 Avenue Joffre  
 77450 Esbly  
 france@luznegra.net  
 Tel: +33 (0) 160 426 585

**Spectrum Test Report**



**Color Parameters:**

Chromaticity Coordinate:  $x=0.3690$   $y=0.3651/u'=0.2222$   $v'=0.4946$   
 CCT=4248K(Duv=-0.0021) Dominant WL:Ld =579.5nm Purity=20.3%  
 Ratio:R=20.3% G=75.6% B=4.1%; Peak WL:Lp=451.5nm FWHM=22.1nm  
 Render Index:Ra=95.7 CRI=92.1 TM30:Rf=91 Rg=102  
 R1 =98 R2 =98 R3 =93 R4 =97 R5 =98 R6 =94 R7 =96  
 R8 =92 R9 =76 R10=92 R11=92 R12=69 R13=99 R14=95 R15=97

**Photo Parameters:**

Flux = 2308 lm Eff. : 106.70 lm/W Fe = 7.595 W Scotopic:4337.7 S/P:1.8791

**Electrical parameters:**

V = 23.998 V I = 0.9015 A P = 21.63 W PF = 1.000

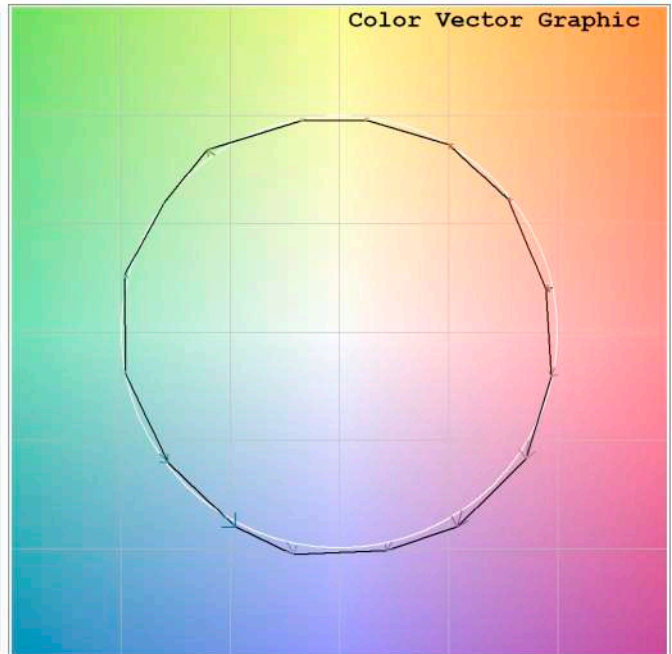
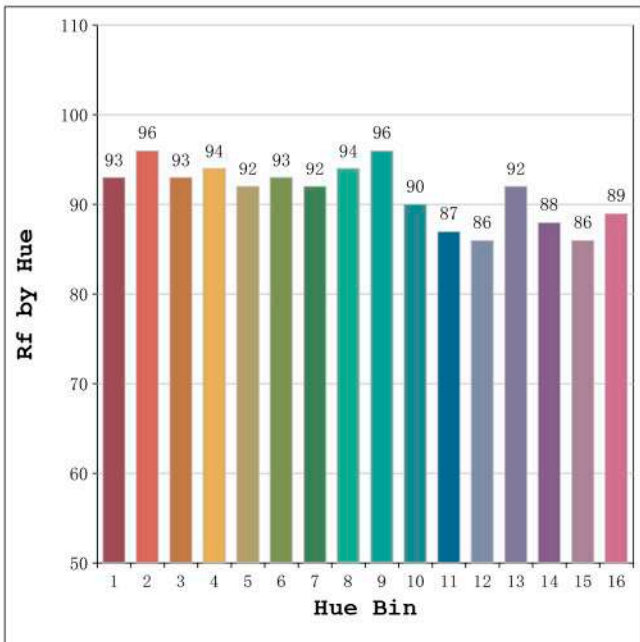
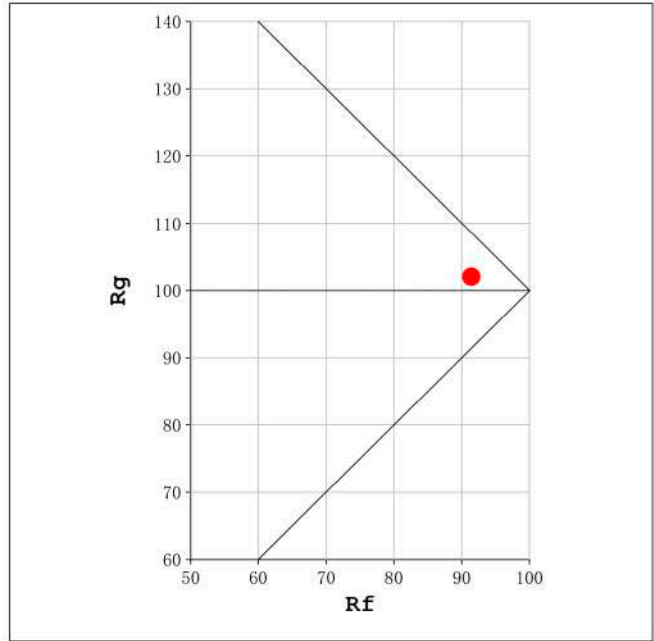
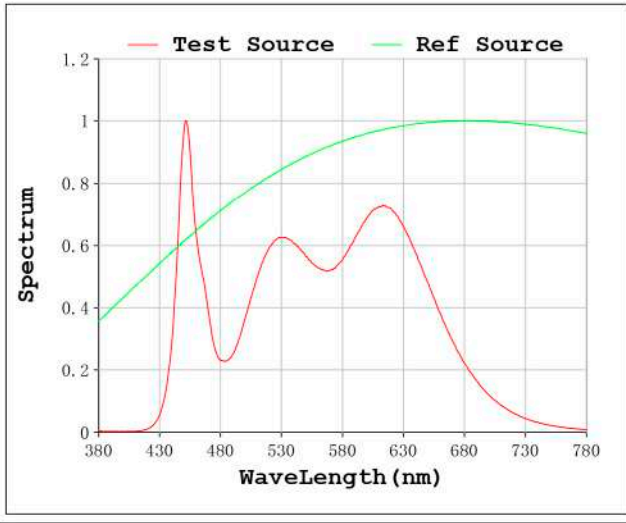
WHITE:ANSI\_4000K

Status: Integral T = 478 ms Ip = 50437 (77%)

Model:Ecoled Gomera neutro  
 Tester:Sergio Carneros  
 Temperature:25Deg  
 Manufacturer:Luz Negra S.L

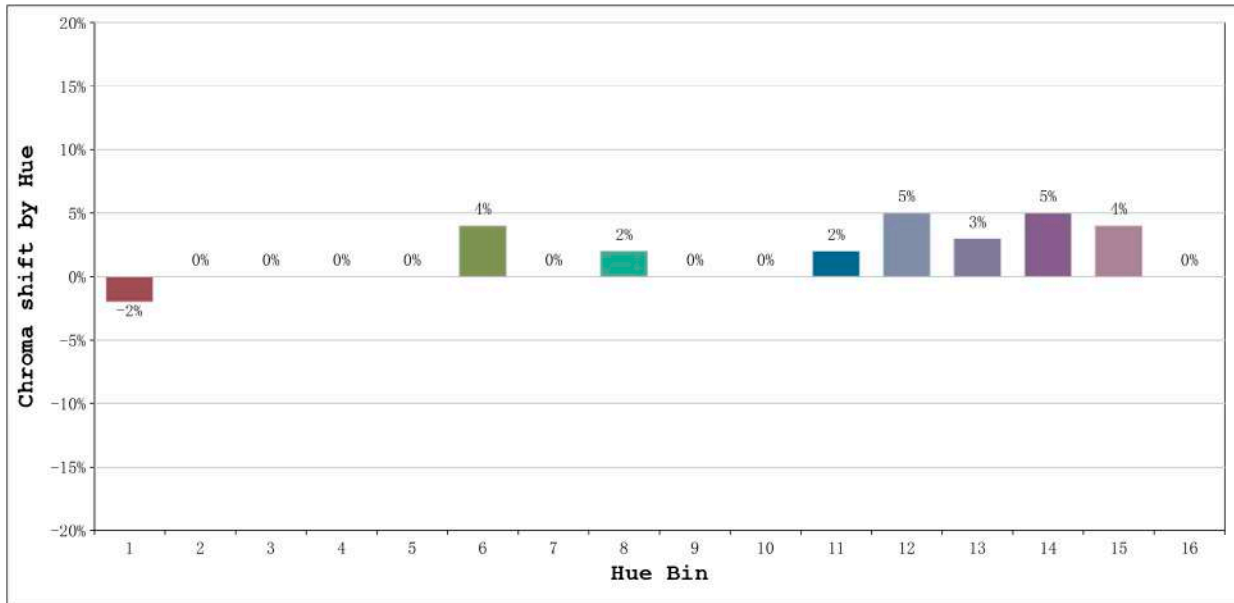
Number: 33.017  
 Date:25-5-2021  
 Humidity:57%  
 Remarks:100cm de tira flexible

Rf: 91      CCT: 4248 K      u': 0.2222  
Rg: 102      Duv: -0.0021      v': 0.4946



Model:Ecoled Gomera neutro  
Tester:Sergio Carneros  
Temperature:25Deg  
Manufacturer:Luz Negra S.L

Number: 33.017  
Date:25-5-2021  
Humidity:57%  
Remarks:100cm de tira flexible

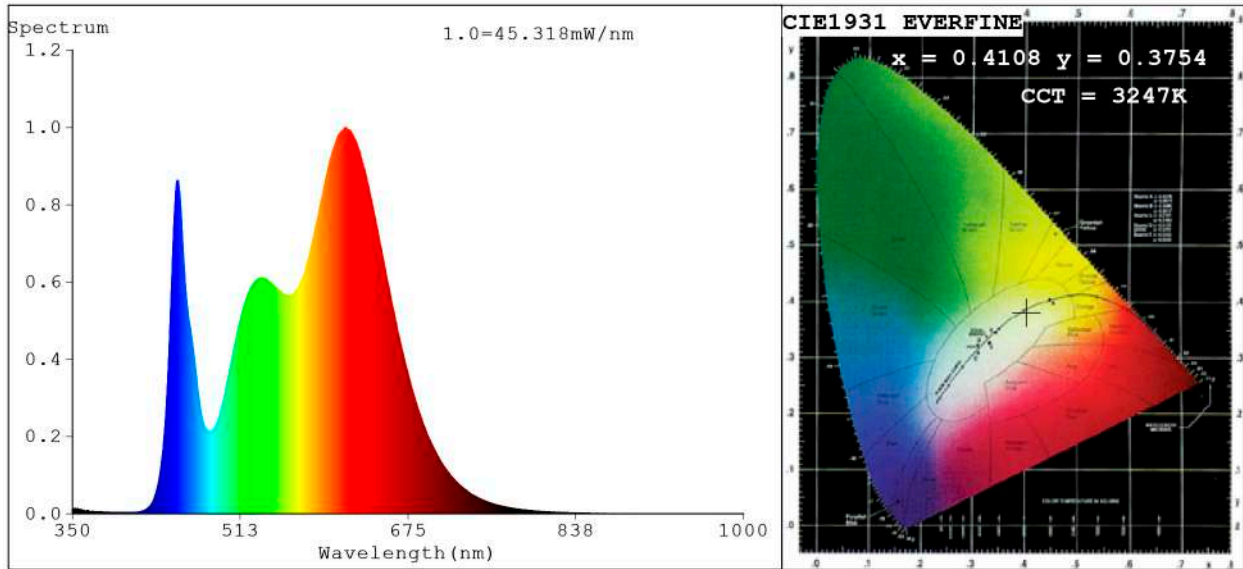


| Hue Bin | Hue Angle       | Rf | Graphic shift(%) |     |
|---------|-----------------|----|------------------|-----|
|         |                 |    | Chroma           | Hue |
| 1       | 0.0° - 22.5°    | 93 | -2               | 0   |
| 2       | 22.5° - 45.0°   | 96 | 0                | 1   |
| 3       | 45.0° - 67.5°   | 93 | 0                | 3   |
| 4       | 67.5° - 90.0°   | 94 | 0                | 1   |
| 5       | 90.0° - 112.5°  | 92 | 0                | 2   |
| 6       | 112.5° - 135.0° | 93 | 4                | 2   |
| 7       | 135.0° - 157.5° | 92 | 0                | 0   |
| 8       | 157.5° - 180.0° | 94 | 2                | 0   |
| 9       | 180.0° - 202.5° | 96 | 0                | 1   |
| 10      | 202.5° - 225.0° | 90 | 0                | 5   |
| 11      | 225.0° - 247.5° | 87 | 2                | 9   |
| 12      | 247.5° - 270.0° | 86 | 5                | 4   |
| 13      | 270.0° - 292.5° | 92 | 3                | -2  |
| 14      | 292.5° - 315.0° | 88 | 5                | -5  |
| 15      | 315.0° - 337.5° | 86 | 4                | -6  |
| 16      | 337.5° - 360.0° | 89 | 0                | -4  |

Model:Ecoled Gomera neutro  
 Tester:Sergio Carneros  
 Temperature:25Deg  
 Manufacturer:Luz Negra S.L

Number: 33.017  
 Date:25-5-2021  
 Humidity:57%  
 Remarks:100cm de tira flexible

**Spectrum Test Report**



**Color Parameters:**

Chromaticity Coordinate:  $x=0.4108$   $y=0.3754$  /  $u'=0.2459$   $v'=0.5055$   
 CCT=3247K (Duv=-0.0079) Dominant WL:Ld =585.6nm Purity=36.0%  
 Ratio:R=24.7% G=72.1% B=3.3%; Peak WL:Lp=615.4nm FWHM=150.3nm  
 Render Index:Ra=94.2 CRI=91.8 TM30:Rf=90 Rg=105  
 R1 =97 R2 =97 R3 =97 R4 =96 R5 =98 R6 =92 R7 =91  
 R8 =86 R9 =69 R10=97 R11=91 R12=82 R13=96 R14=98 R15=97

**Photo Parameters:**

Flux = 2131 lm Eff. : 98.64 lm/W Fe = 7.124 W Scotopic:3394.5 S/P:1.5931

**Electrical parameters:**

V = 23.998 V I = 0.9001 A P = 21.60 W PF = 1.000

WHITE:OUT

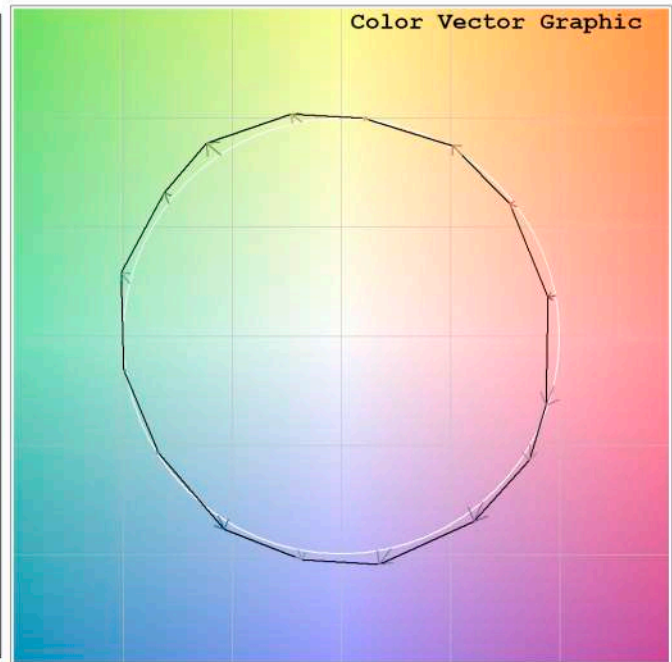
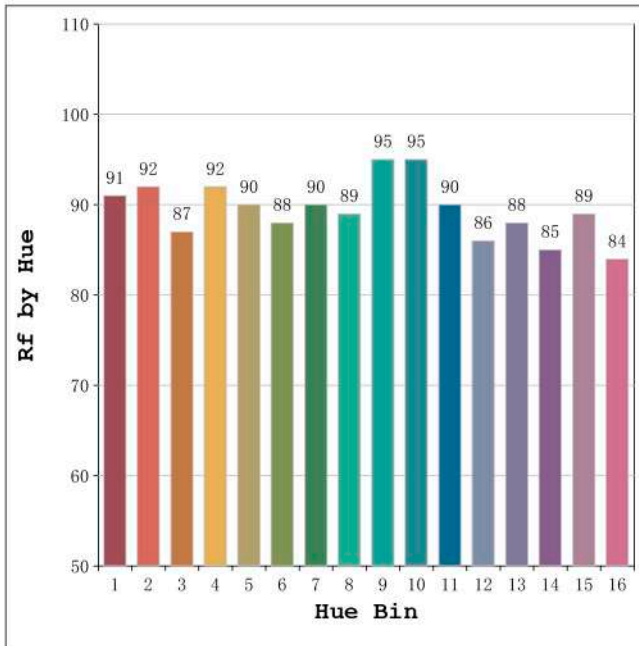
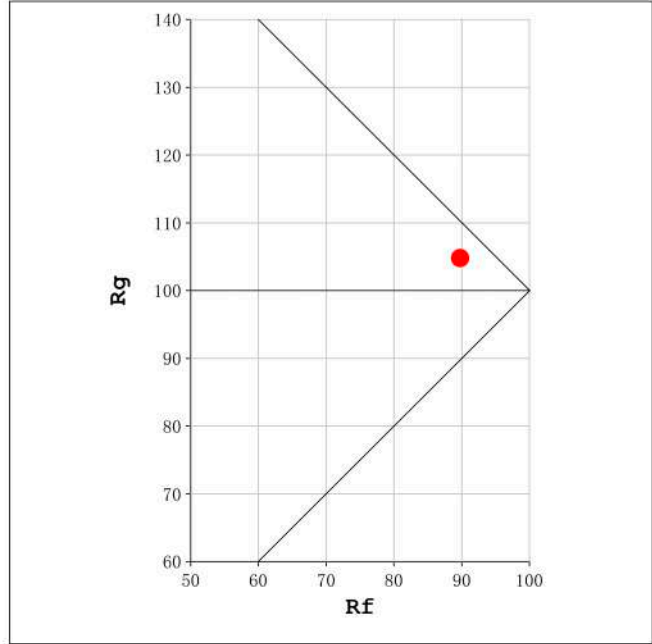
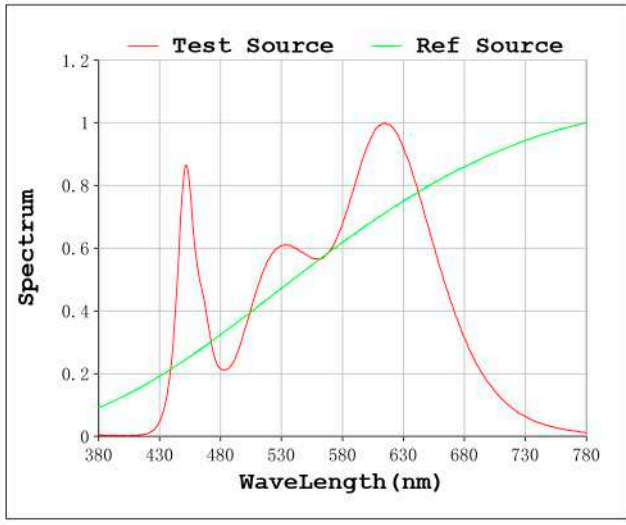
Status: Integral T = 539 ms Ip = 51093 (78%)

Model:Ecoled Gomera 3200K  
 Tester:Sergio Carneros  
 Temperature:25Deg  
 Manufacturer:Luz Negra S.L

Number: 33.018  
 Date:25-5-2021  
 Humidity:57%  
 Remarks:100cm de tira flexible

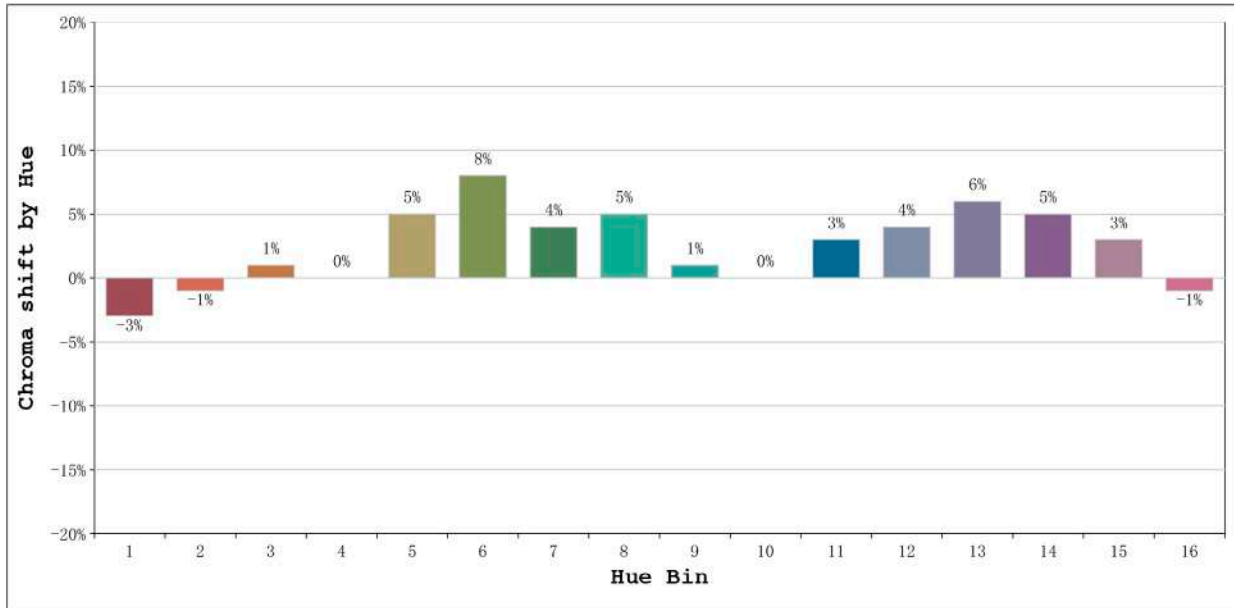


Rf: 90      CCT: 3247 K      u': 0.2459  
Rg: 105      Duv: -0.0079      v': 0.5055



Model:Ecoled Gomera 3200K  
Tester:Sergio Carneros  
Temperature:25Deg  
Manufacturer:Luz Negra S.L

Number: 33.018  
Date:25-5-2021  
Humidity:57%  
Remarks:100cm de tira flexible

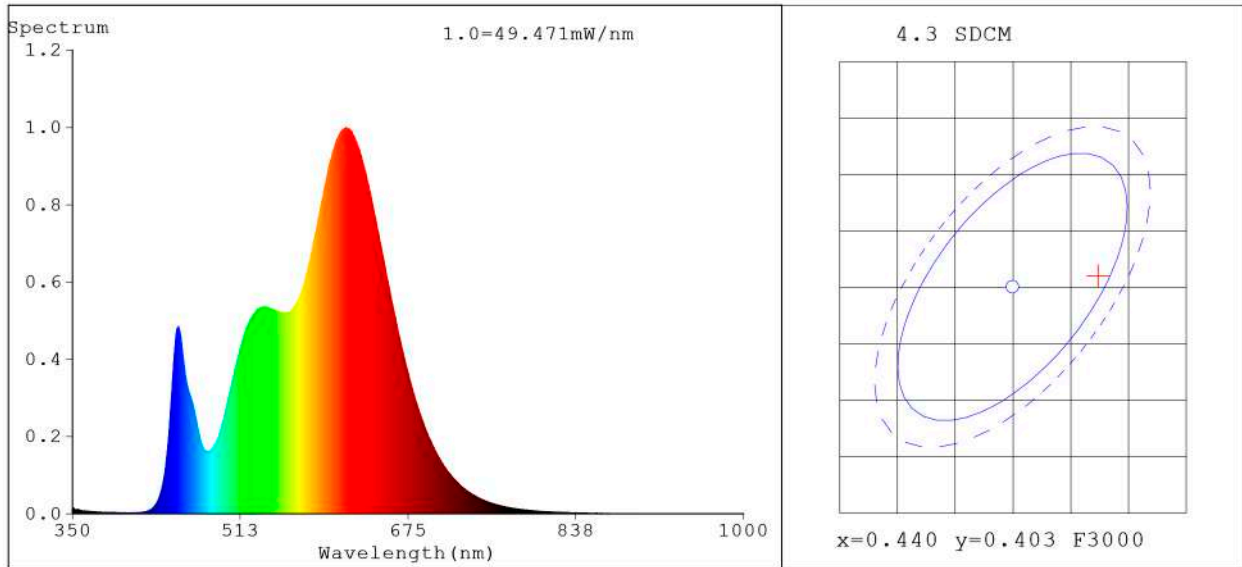


| Hue Bin | Hue Angle       | Rf | Graphic shift(%) |     |
|---------|-----------------|----|------------------|-----|
|         |                 |    | Chroma           | Hue |
| 1       | 0.0° - 22.5°    | 91 | -3               | 0   |
| 2       | 22.5° - 45.0°   | 92 | -1               | 3   |
| 3       | 45.0° - 67.5°   | 87 | 1                | 6   |
| 4       | 67.5° - 90.0°   | 92 | 0                | 2   |
| 5       | 90.0° - 112.5°  | 90 | 5                | 4   |
| 6       | 112.5° - 135.0° | 88 | 8                | 3   |
| 7       | 135.0° - 157.5° | 90 | 4                | -2  |
| 8       | 157.5° - 180.0° | 89 | 5                | -3  |
| 9       | 180.0° - 202.5° | 95 | 1                | 0   |
| 10      | 202.5° - 225.0° | 95 | 0                | 2   |
| 11      | 225.0° - 247.5° | 90 | 3                | 6   |
| 12      | 247.5° - 270.0° | 86 | 4                | 3   |
| 13      | 270.0° - 292.5° | 88 | 6                | -6  |
| 14      | 292.5° - 315.0° | 85 | 5                | -7  |
| 15      | 315.0° - 337.5° | 89 | 3                | -5  |
| 16      | 337.5° - 360.0° | 84 | -1               | -8  |

Model:Ecoled Gomera 3200K  
 Tester:Sergio Carneros  
 Temperature:25Deg  
 Manufacturer:Luz Negra S.L

Number: 33.018  
 Date:25-5-2021  
 Humidity:57%  
 Remarks:100cm de tira flexible

**Spectrum Test Report**



**Color Parameters:**

Chromaticity Coordinate: x=0.4474 y=0.4040/u'=0.2574 v'=0.5229  
 CCT=2831K(Duv=-0.0013) Dominant WL:Ld =584.0nm Purity=55.5%  
 Ratio:R=26.4% G=71.1% B=2.5%; Peak WL:Lp=614.8nm FWHM=141.2nm  
 Render Index:Ra=94.2 CRI=91.2 TM30:Rf=90 Rg=101  
 R1 =97 R2 =99 R3 =99 R4 =98 R5 =97 R6 =95 R7 =90  
 R8 =78 R9 =52 R10=96 R11=95 R12=83 R13=99 R14=98 R15=90

**Photo Parameters:**

Flux = 2171 lm Eff. : 100.49 lm/W Fe = 7.043 W Scotopic:2973.9 S/P:1.37

**Electrical parameters:**

V = 23.998 V I = 0.9001 A P = 21.60 W PF = 1.000

WHITE:ANSI\_2700K

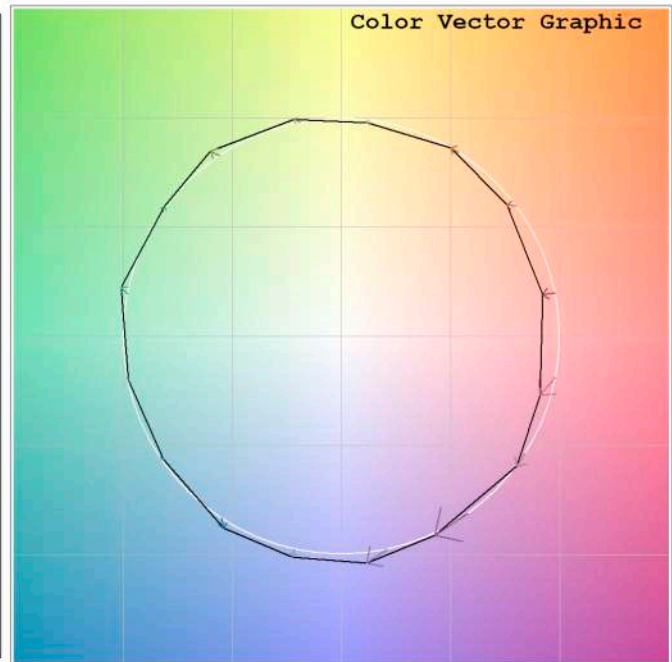
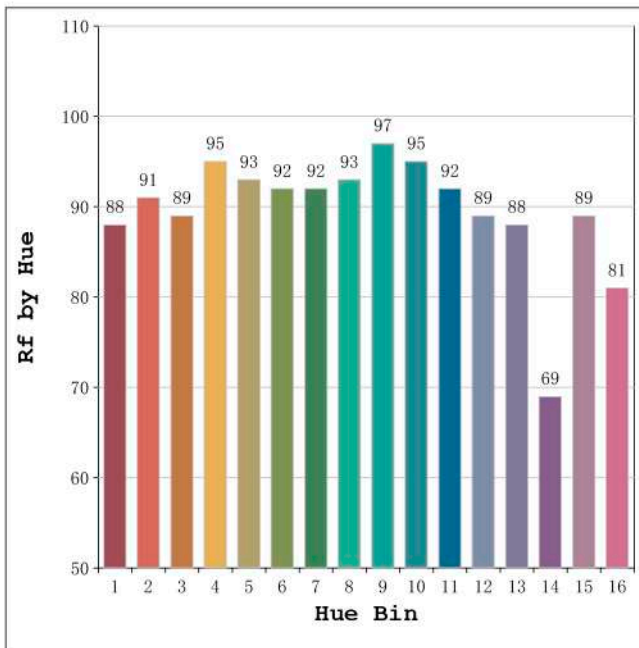
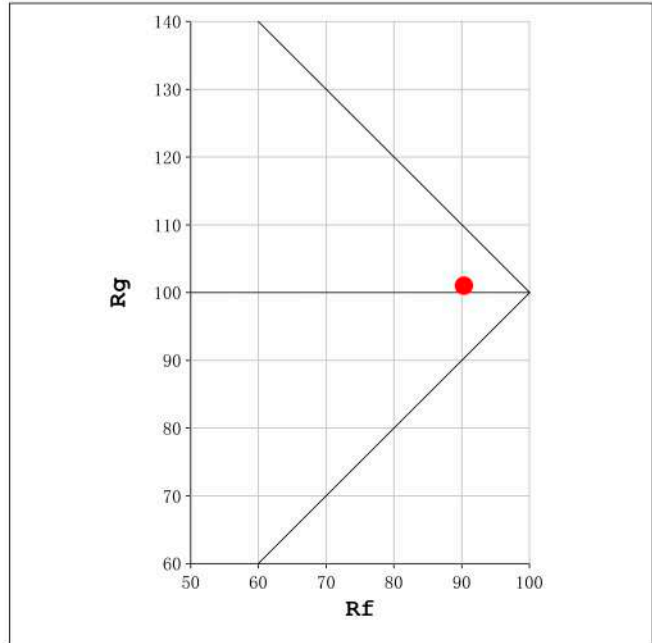
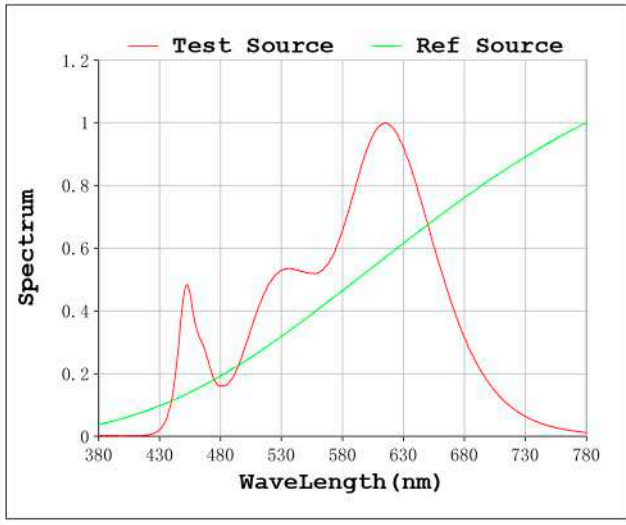
Status: Integral T = 478 ms Ip = 49424 (75%)

Model:Ecoled Gomera 2850K  
 Tester:Sergio Carneros  
 Temperature:25Deg  
 Manufacturer:Luz Negra S.L

Number: 33.019  
 Date:25-5-2021  
 Humidity:57%  
 Remarks:100cm de tira flexible

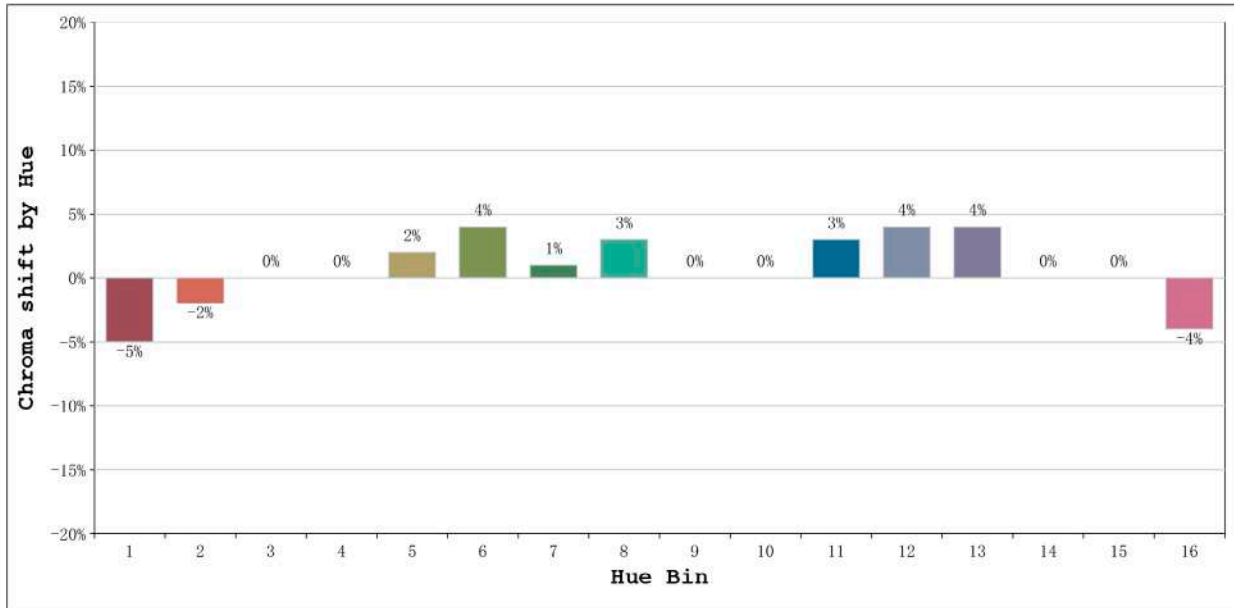


Rf: 90      CCT: 2831 K      u': 0.2574  
Rg: 101      Duv: -0.0013      v': 0.5229



Model:Ecoled Gomera 2850K  
Tester:Sergio Carneros  
Temperature:25Deg  
Manufacturer:Luz Negra S.L

Number: 33.019  
Date:25-5-2021  
Humidity:57%  
Remarks:100cm de tira flexible



| Hue Bin | Hue Angle       | Rf | Graphic shift(%) |     |
|---------|-----------------|----|------------------|-----|
|         |                 |    | Chroma           | Hue |
| 1       | 0.0° - 22.5°    | 88 | -5               | 0   |
| 2       | 22.5° - 45.0°   | 91 | -2               | 3   |
| 3       | 45.0° - 67.5°   | 89 | 0                | 5   |
| 4       | 67.5° - 90.0°   | 95 | 0                | 0   |
| 5       | 90.0° - 112.5°  | 93 | 2                | 3   |
| 6       | 112.5° - 135.0° | 92 | 4                | 2   |
| 7       | 135.0° - 157.5° | 92 | 1                | -2  |
| 8       | 157.5° - 180.0° | 93 | 3                | -1  |
| 9       | 180.0° - 202.5° | 97 | 0                | 0   |
| 10      | 202.5° - 225.0° | 95 | 0                | 2   |
| 11      | 225.0° - 247.5° | 92 | 3                | 3   |
| 12      | 247.5° - 270.0° | 89 | 4                | 0   |
| 13      | 270.0° - 292.5° | 88 | 4                | -10 |
| 14      | 292.5° - 315.0° | 69 | 0                | -17 |
| 15      | 315.0° - 337.5° | 89 | 0                | -6  |
| 16      | 337.5° - 360.0° | 81 | -4               | -8  |

Model:Ecoled Gomera 2850K  
Tester:Sergio Carneros  
Temperature:25Deg  
Manufacturer:Luz Negra S.L

Number: 33.019  
Date:25-5-2021  
Humidity:57%  
Remarks:100cm de tira flexible