

MEDIUM BRIGHTNESS

TUNABLE WHITE FLEXIBLE PANEL

FLEXIBLE PANEL

Ref: 46.002

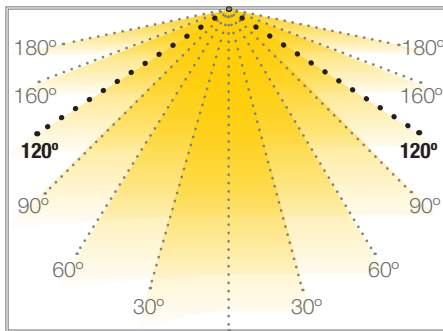
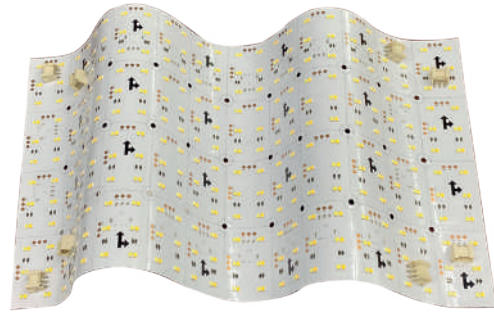
3000°K - 6000°K

Flexible TUNABLE WHITE panel for indoor use (480x240mm) which can be cut in to 48 modules of 60x40mm, with 6 cold leds and 6 warm leds.

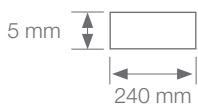
It is specially recommended for backlighting (luminaires and lightboxes).

It has fast connectors to put various panels together without welding.

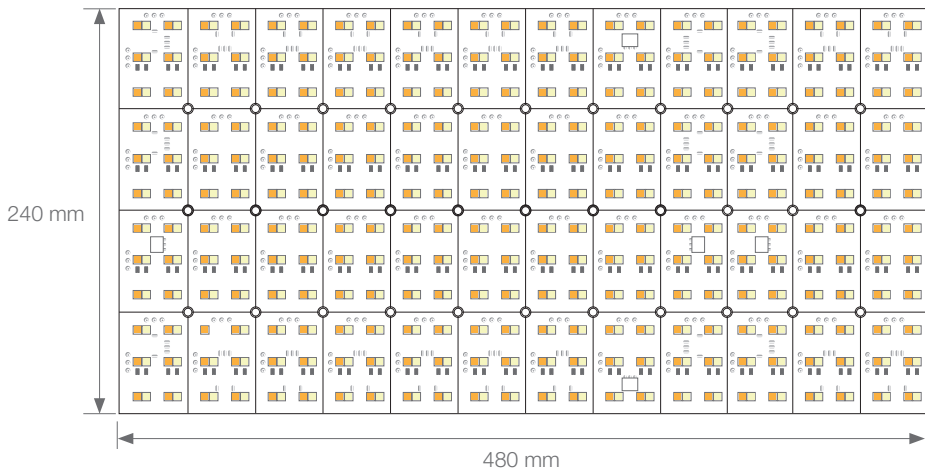
We can connect up to 10 panels in series.



Power (W)	17W/u
Voltage (V)	24V
Led type	2835
Lumens (3000°K-6000°K)	1888 Lm/u
Light emission	120°
Waterproofing	IP20
N° leds/m	288
Measurements	480x240x5mm
Cuttable	it is cuttable basing on the cutting line
PCB	480x240mm
Working temperature	-25°C / +60°C
Apt for	indoor
Packaging	1 unit
Guarantee	2 years



Aprobado por: 

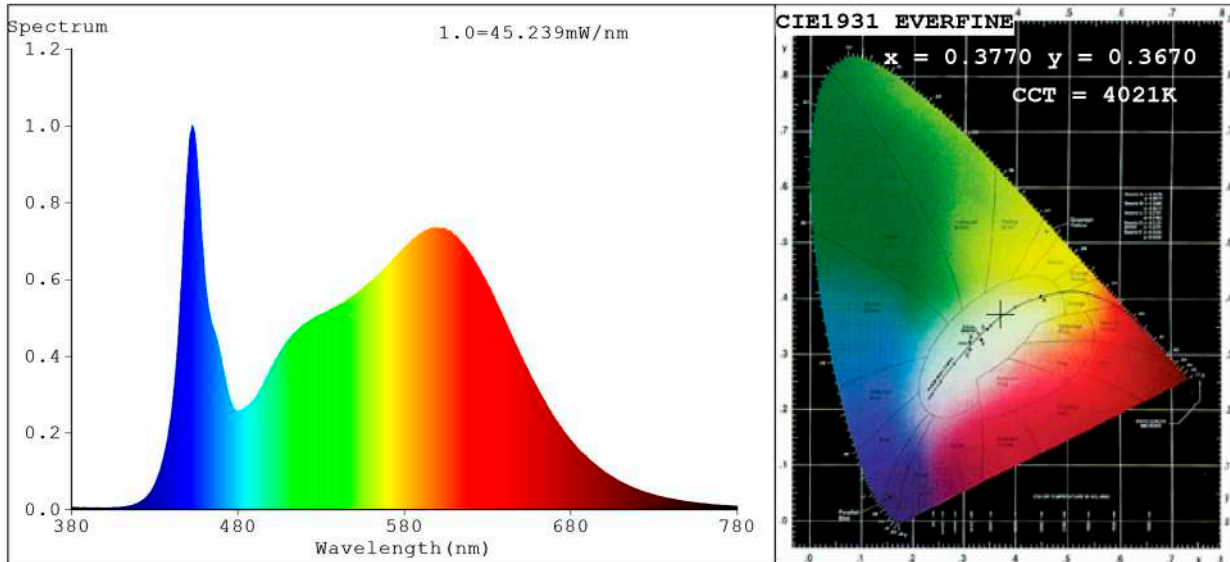


BARCELONA
C/ Carles Buigues, 13
08420 Canovelles
Info@luznegra.net
Tel: +34 938 402 598

MADRID
C/ Adaptación, 27
28906 Getafe
centro@luznegra.net
Tel: +34 916 416 081

PARIS
113 Avenue Joffre
77450 Esbly
france@luznegra.net
Tel: +33 (0) 160 426 585

Spectrum Test Report



Color Parameters:

Chromaticity Coordinate: $x=0.3770$ $y=0.3670$ $u'=0.2268$ $v'=0.4967$
 CCT=4021K (Duv=-0.0036) Dominant WL:Ld =581.3nm Purity=23.3%
 Ratio:R=19.2% G=76.6% B=4.2%;;Peak WL:Lp=452.6nm FWHM=18.7nm
 Render Index:Ra=87.4 CRI=82.6 TM30:Rf=84 Rg=97
 R1 =88 R2 =95 R3 =96 R4 =86 R5 =87 R6 =91 R7 =86
 R8 =70 R9 =28 R10=86 R11=86 R12=67 R13=90 R14=99 R15=83

Photo Parameters:

Flux = 1888 lm Eff. : 109.85 lm/W Fe = 5.931 W Scotopic:3347.6 S/P:1.7731

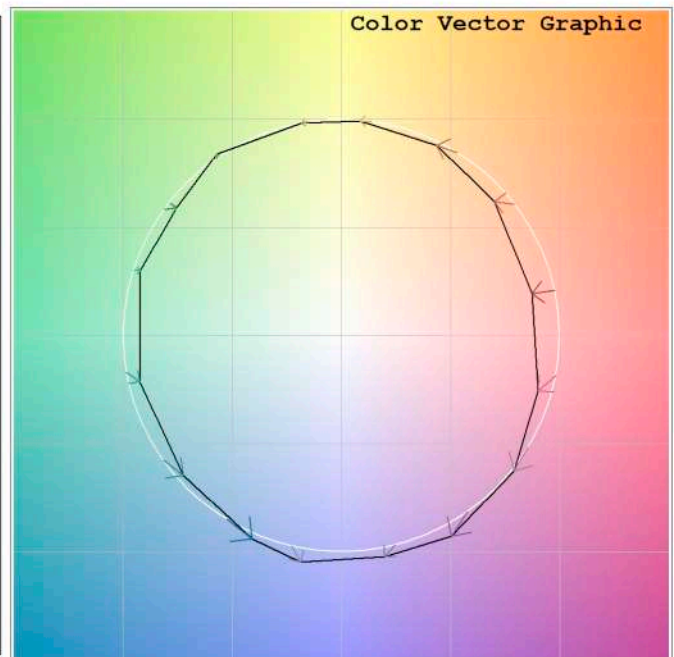
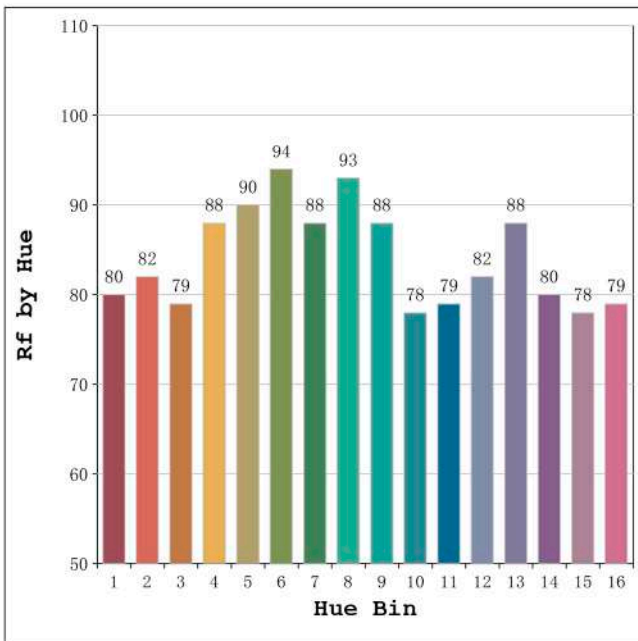
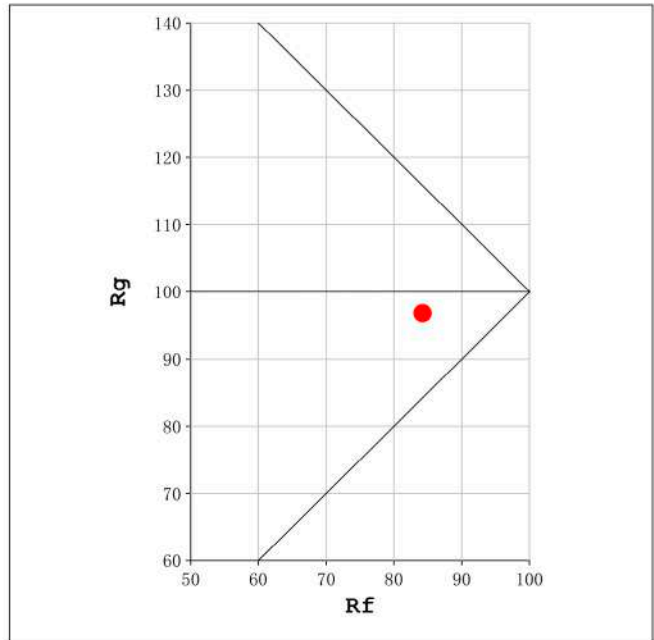
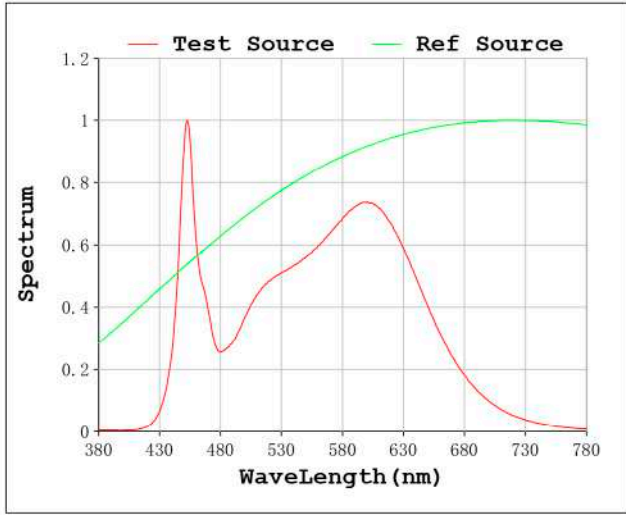
Electrical parameters:

V = 23.998 V I = 0.7162 A P = 17.19 W PF = 1.000

Status: Integral T = 735 ms Ip = 52822 (81%)

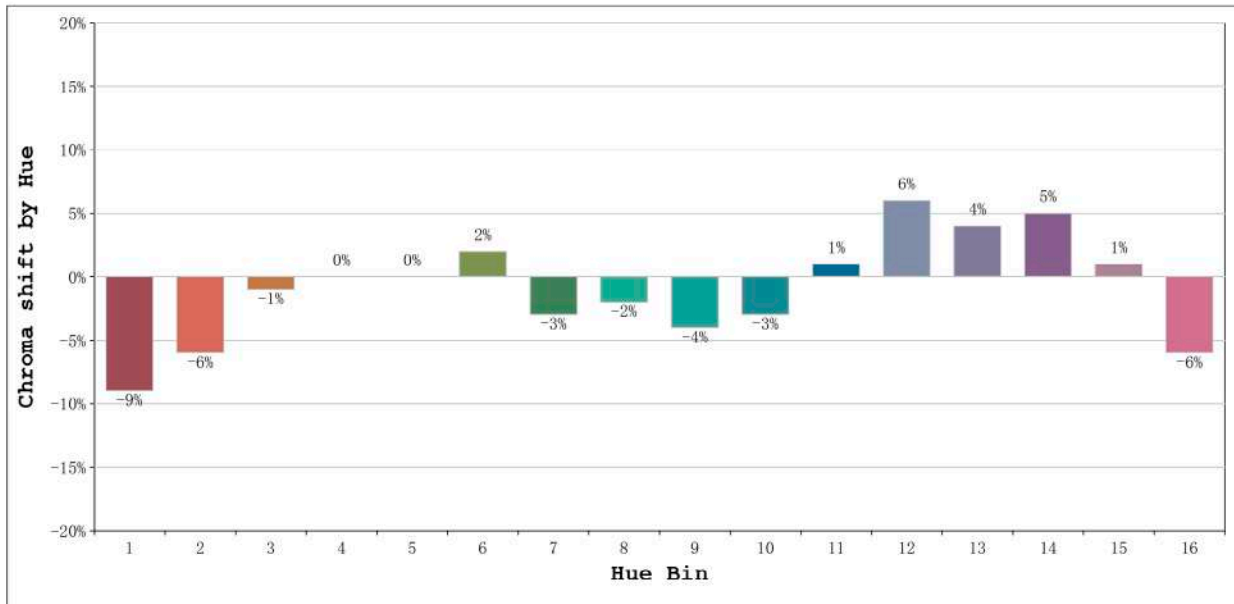
Model:Ecoled Panel Flexible CTT Number: 46.002
 Tester:Sergio Carneros Date:
 Temperature:20Deg Humidity:50%
 Manufacturer:Luz Negra Remarks:1 panel de 480x240mm

Rf: 84 CCT: 4021 K u': 0.2268
Rg: 97 Duv: -0.0036 v': 0.4967



Model:Ecoled Panel Flexible CTT
Tester:Sergio Careros
Temperature:20Deg
Manufacturer:Luz Negra

Number: 46.002
Date:
Humidity:50%
Remarks:1 panel de 480x240mm



Hue Bin	Hue Angle	Rf	Graphic shift(%)	
			Chroma	Hue
1	0.0° - 22.5°	80	-9	1
2	22.5° - 45.0°	82	-6	6
3	45.0° - 67.5°	79	-1	10
4	67.5° - 90.0°	88	0	5
5	90.0° - 112.5°	90	0	3
6	112.5° - 135.0°	94	2	0
7	135.0° - 157.5°	88	-3	-3
8	157.5° - 180.0°	93	-2	0
9	180.0° - 202.5°	88	-4	5
10	202.5° - 225.0°	78	-3	11
11	225.0° - 247.5°	79	1	14
12	247.5° - 270.0°	82	6	5
13	270.0° - 292.5°	88	4	-5
14	292.5° - 315.0°	80	5	-11
15	315.0° - 337.5°	78	1	-12
16	337.5° - 360.0°	79	-6	-7

Model:Ecoled Panel Flexible CTT
 Tester:Sergio Carneros
 Temperature:20Deg
 Manufacturer:Luz Negra

Number: 46.002
 Date:
 Humidity:50%
 Remarks:1 panel de 480x240mm