

HIGH BRIGHTNESS

BLANES

FLEXIBLE STRIP

Ref: 33.201

CCT (1800°K - 6500°K)

Single-coloured flexible strip "PRO"
IP20 with 288 leds/metre 2835SMD.

Requires use with led profile to permit dissipation.

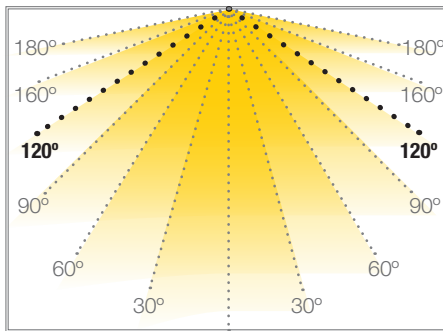
Heat dissipation tape included.

14mm PCB

CRI>80

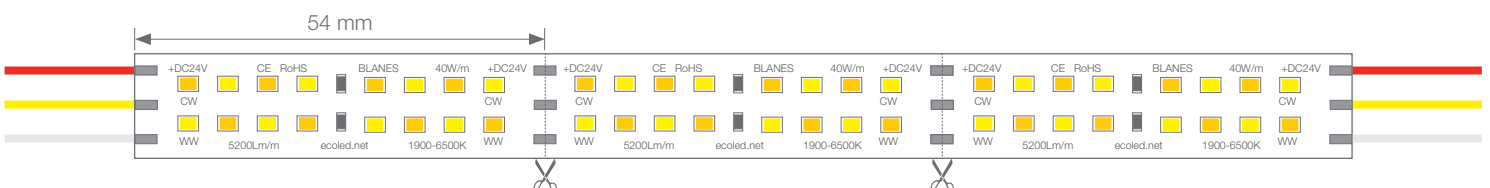
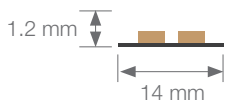
Daily recommended use:14h
Maximum connection in open circuit: 3m
Maximum connection in closed circuit: 5m
Estimated lifespan: 50000h *

* Depending on the dissipation of the profile, the daily working hours and the external environmental working temperature



Power (W)	40W/m
Voltage (V)	24V
Led type	SMD2835
Lumens (1800K/6500K)	5200 Lm/m
CRI	>80
Light emission	120°
Waterproofing	IP20
N° leds/m	288
Measurements	5000x14x1.58mm
Cuttable	every 54mm
PCB	14mm
Working temperature	-25°C / +60°C
Apt for	indoor
Packaging	1 roll/5m
Guarantee	3 years

Aprobado por: CE RoHS COMPLIANT

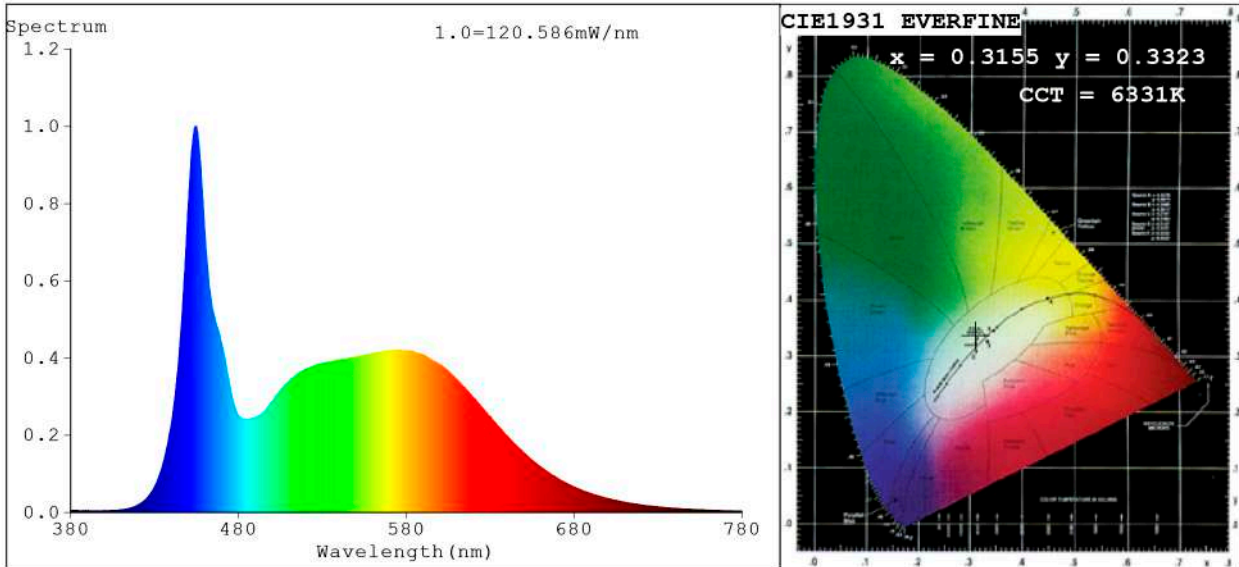


BARCELONA
C/ Carles Buhigues, 13
08420 Canovelles
Info@luznegra.net
Tel: +34 938 402 598

MADRID
C/ Adaptación, 27
28906 Getafe
centro@luznegra.net
Tel: +34 916 416 081

PARIS
113 Avenue Joffre
77450 Esbly
france@luznegra.net
Tel: +33 (0) 160 426 585

Spectrum Test Report



Color Parameters:

Chromaticity Coordinate: $x=0.3155$ $y=0.3323$ $u'=0.1986$ $v'=0.4705$
 CCT=6331K (Duv=0.0034) Dominant WL:Ld =491.0nm Purity=6.1%
 Ratio:R=13.7% G=80.3% B=6.1%; Peak WL:Lp=454.9nm FWHM=19.8nm
 Render Index:Ra=83.5 CRI=76.4 TM30:Rf=80 Rg=92 Lav=539.5nm
 R1 =82 R2 =92 R3 =94 R4 =80 R5 =82 R6 =86 R7 =86
 R8 =67 R9 =5 R10=78 R11=79 R12=57 R13=86 R14=97 R15=77

Photo Parameters:

Flux = 3271 lm Eff. : 161.82 lm/W Fe = 10.47 W Scotopic:7435 S/P:2.2731

Electrical parameters:

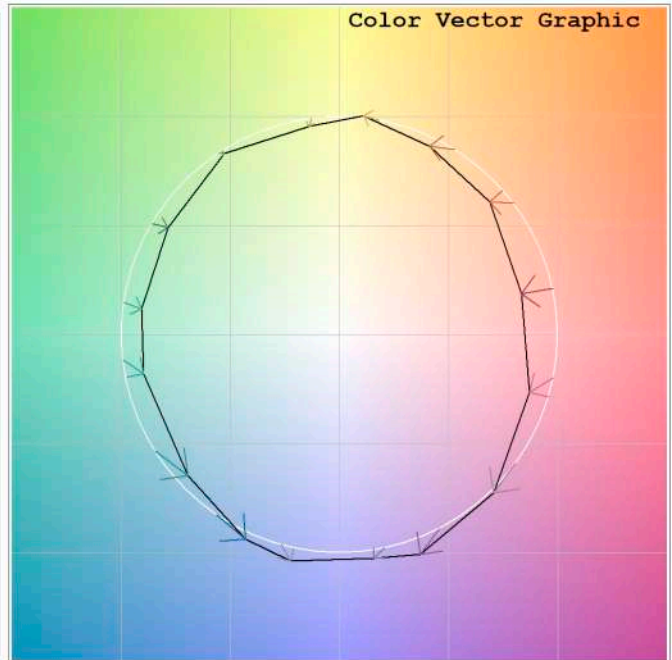
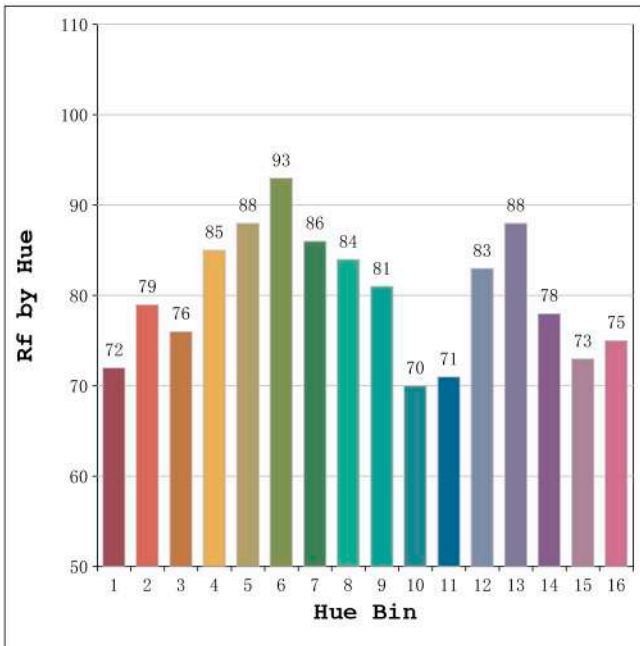
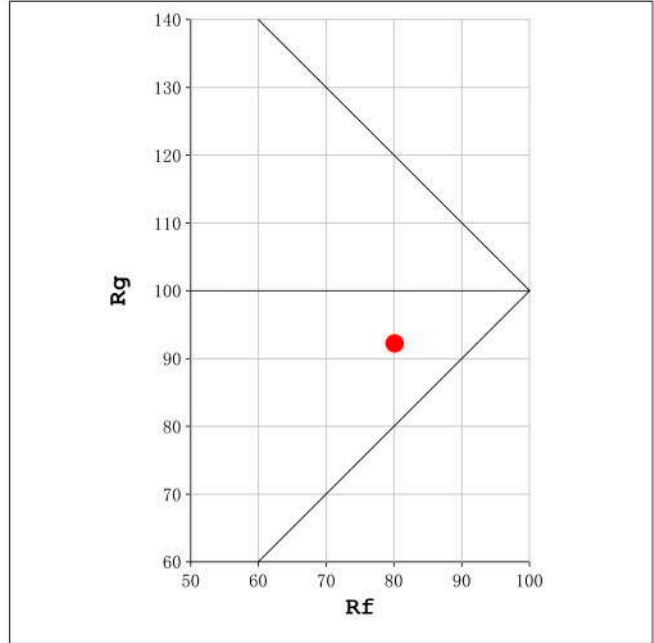
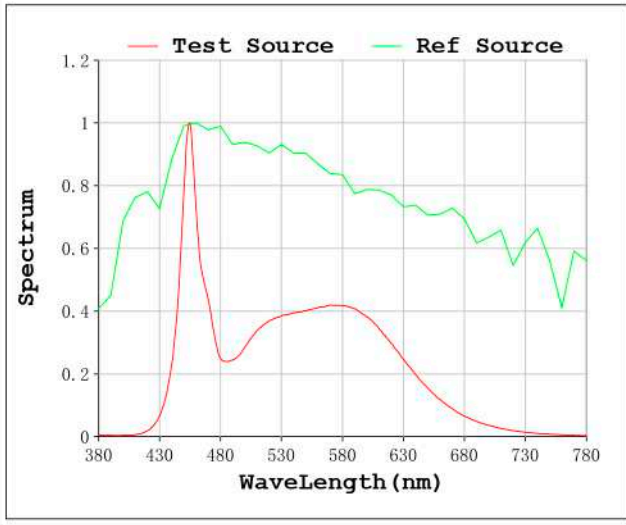
V = 23.998 V I = 0.8423 A P = 20.21 W PF = 1.000

Status: Integral T = 278 ms Ip = 49610 (76%)

Model:Ecoled Blancs (CW)
 Tester:Sergio Carneros
 Temperature:25Deg
 Manufacturer:Luz Negra.S.L

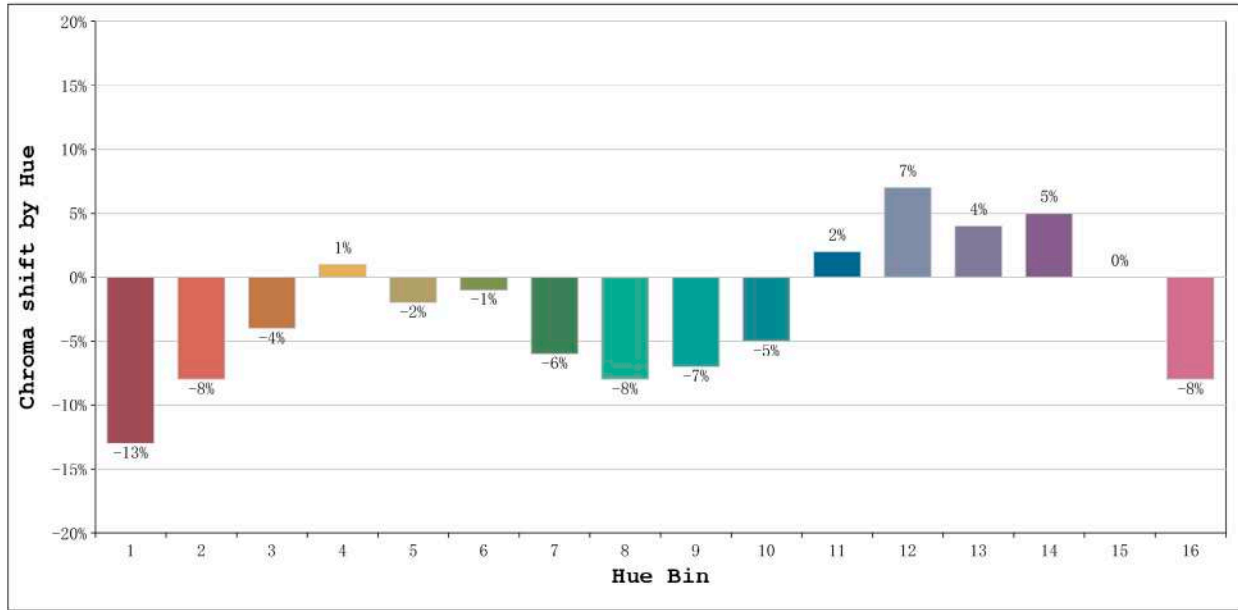
Number: 33.201
 Date:2022-11-04 10:12:00
 Humidity:57%
 Remarks:100cm Tira flexible

Rf: 80 CCT: 6331 K u': 0.1986
Rg: 92 Duv: 0.0034 v': 0.4705



Model:Ecoled Blanes (CW)
Tester:Sergio Carneros
Temperature:25Deg
Manufacturer:Luz Negra.S.L

Number: 33.201
Date:2022-11-04 10:12:00
Humidity:57%
Remarks:100cm Tira flexible

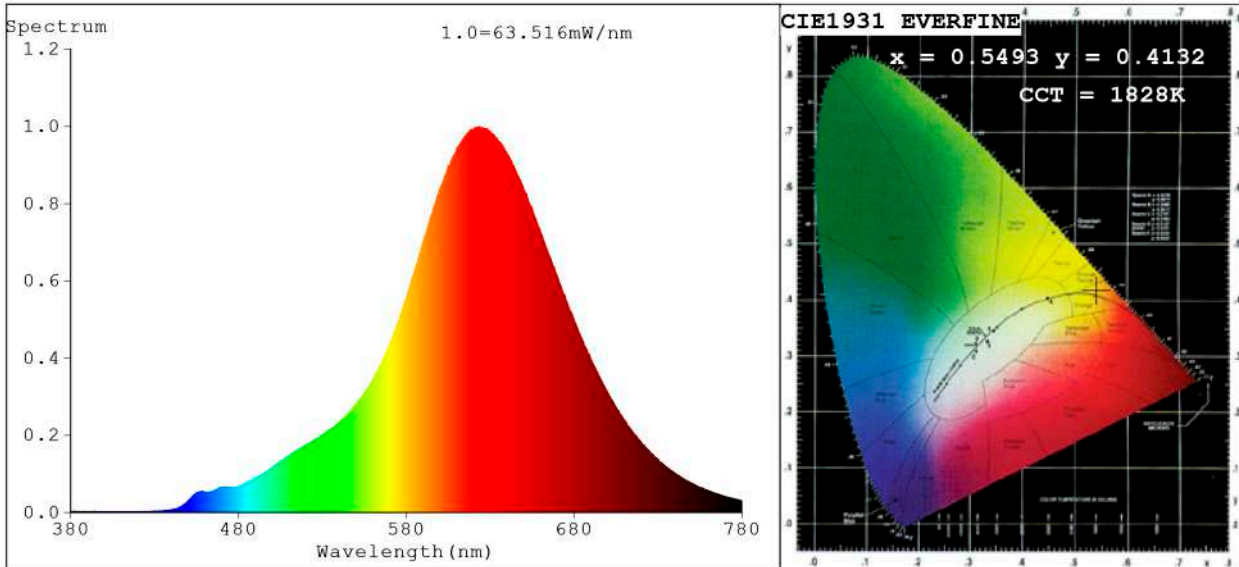


Hue Bin	Hue Angle	Rf	Graphic shift (%)	
			Chroma	Hue
1	0.0° - 22.5°	72	-13	0
2	22.5° - 45.0°	79	-8	6
3	45.0° - 67.5°	76	-4	11
4	67.5° - 90.0°	85	1	8
5	90.0° - 112.5°	88	-2	2
6	112.5° - 135.0°	93	-1	-1
7	135.0° - 157.5°	86	-6	-1
8	157.5° - 180.0°	84	-8	1
9	180.0° - 202.5°	81	-7	8
10	202.5° - 225.0°	70	-5	17
11	225.0° - 247.5°	71	2	17
12	247.5° - 270.0°	83	7	6
13	270.0° - 292.5°	88	4	-5
14	292.5° - 315.0°	78	5	-13
15	315.0° - 337.5°	73	0	-16
16	337.5° - 360.0°	75	-8	-8

Model:Ecoled Blancs (CW)
Tester:Sergio Carneros
Temperature:25Deg
Manufacturer:Luz Negra.S.L

Number: 33.201
Date:2022-11-04 10:12:00
Humidity:57%
Remarks:100cm Tira flexible

Spectrum Test Report



Color Parameters:

Chromaticity Coordinate: $x=0.5493$ $y=0.4132$ $u'=0.3203$ $v'=0.5421$
 CCT=1828K (Duv=0.0013) Dominant WL:Ld =590.2nm Purity=88.9%
 Ratio:R=37.0% G=61.9% B=1.1%; Peak WL:Lp=623.8nm FWHM=104.4nm
 Render Index:Ra=83.7 CRI=81.5 TM30:Rf=82 Rg=87 Lav=624.4nm
 R1 =83 R2 =95 R3 =91 R4 =81 R5 =84 R6 =98 R7 =79
 R8 =58 R9 =21 R10=91 R11=84 R12=93 R13=86 R14=96 R15=74

Photo Parameters:

Flux = 2029 lm Eff. : 101.63 lm/W Fe = 7.879 W Scotopic:1576 S/P:0.77673

Electrical parameters:

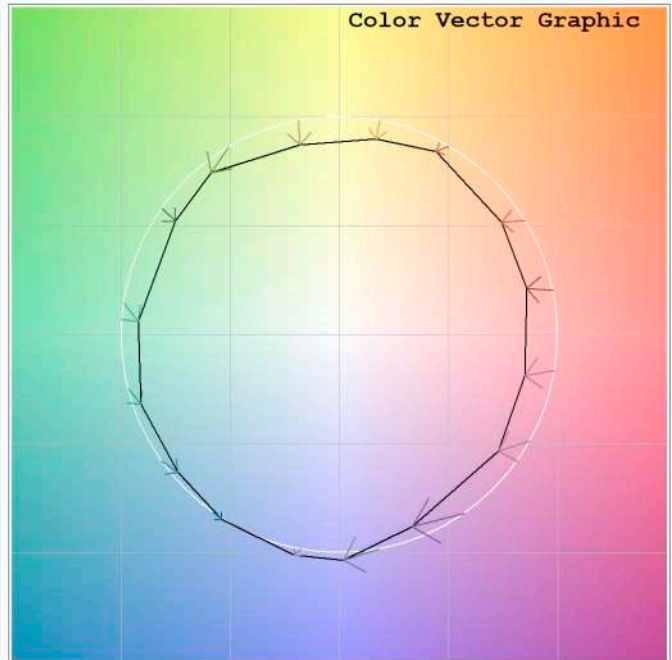
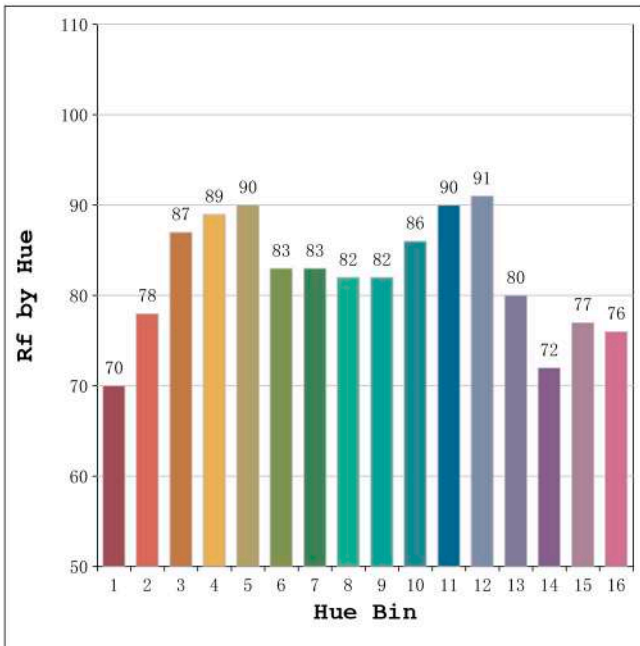
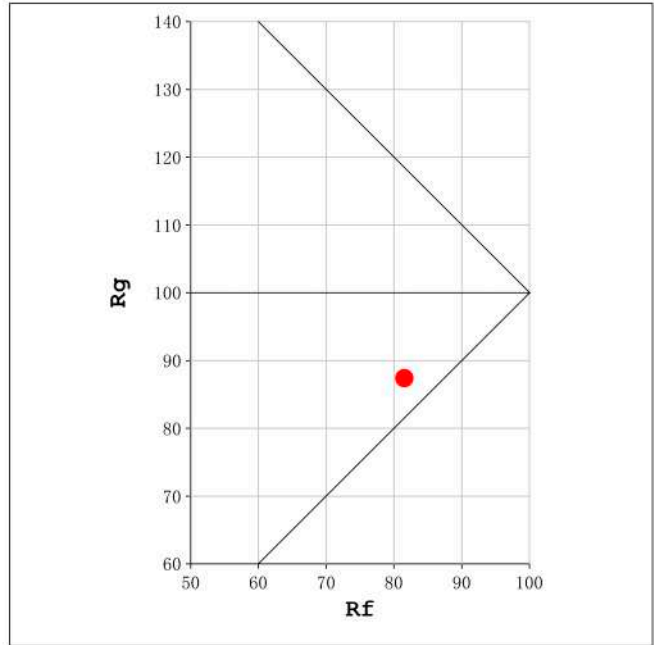
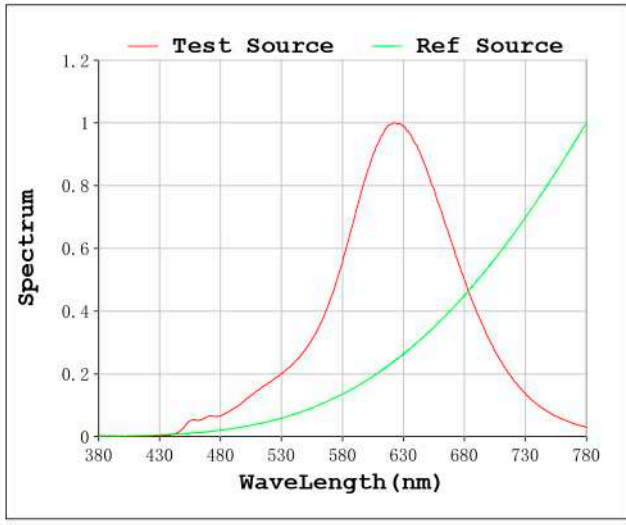
V = 23.998 V I = 0.8319 A P = 19.96 W PF = 1.000

Status: Integral T = 278 ms Ip = 33443 (51%)

Model:Ecoled Blancs (WW)
 Tester:Sergio Carneros
 Temperature:25Deg
 Manufacturer:Luz Negra.S.L

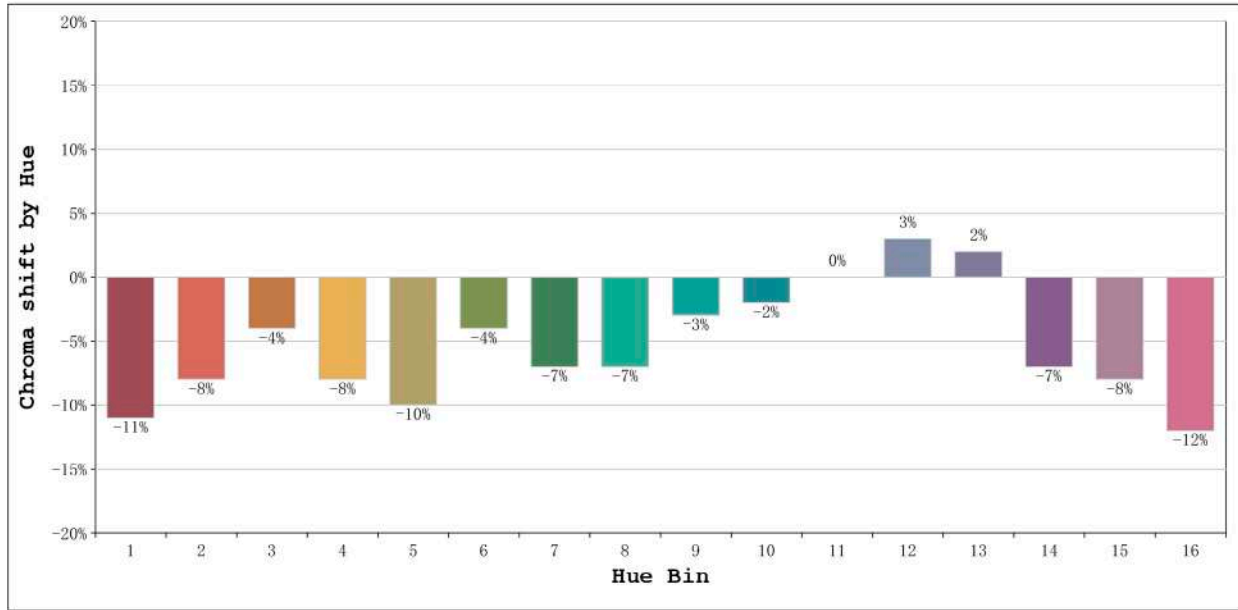
Number: 33.201
 Date:2022-11-04 10:12:30
 Humidity:57%
 Remarks:100cm Tira flexible

Rf: 82 CCT: 1828 K u': 0.3203
Rg: 87 Duv: 0.0013 v': 0.5421



Model:Ecoled Blanes (WW)
Tester:Sergio Carneros
Temperature:25Deg
Manufacturer:Luz Negra.S.L

Number: 33.201
Date:2022-11-04 10:12:30
Humidity:57%
Remarks:100cm Tira flexible

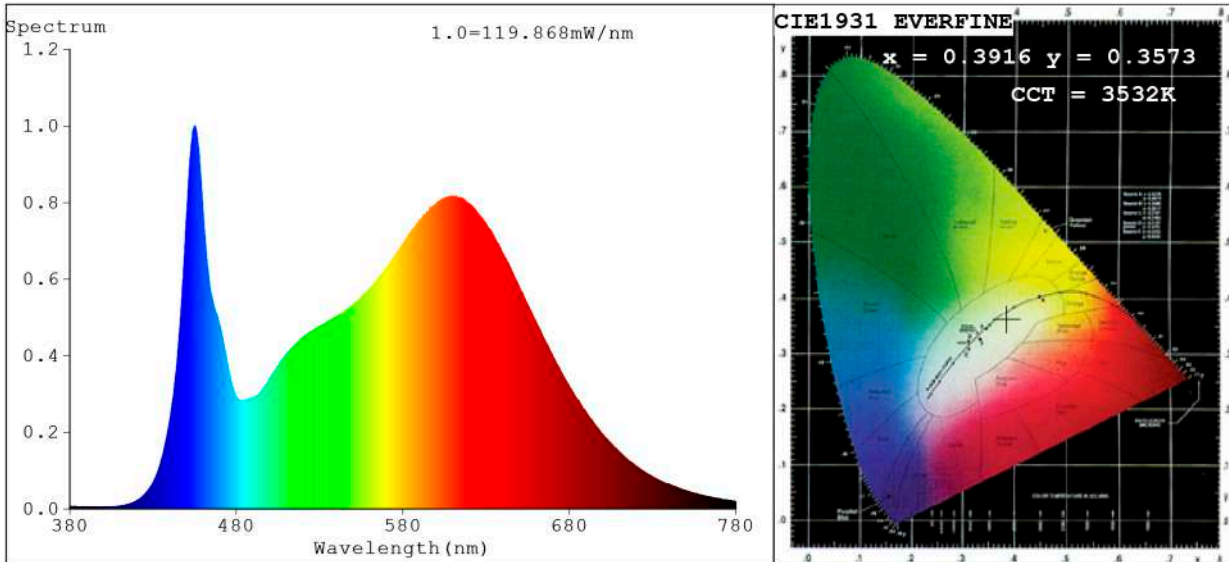


Hue Bin	Hue Angle	Rf	Graphic shift(%)	
			Chroma	Hue
1	0.0° - 22.5°	70	-11	3
2	22.5° - 45.0°	78	-8	5
3	45.0° - 67.5°	87	-4	4
4	67.5° - 90.0°	89	-8	0
5	90.0° - 112.5°	90	-10	2
6	112.5° - 135.0°	83	-4	13
7	135.0° - 157.5°	83	-7	1
8	157.5° - 180.0°	82	-7	7
9	180.0° - 202.5°	82	-3	8
10	202.5° - 225.0°	86	-2	8
11	225.0° - 247.5°	90	0	5
12	247.5° - 270.0°	91	3	-2
13	270.0° - 292.5°	80	2	-16
14	292.5° - 315.0°	72	-7	-22
15	315.0° - 337.5°	77	-8	-11
16	337.5° - 360.0°	76	-12	-4

Model:Ecoled Blancs (WW)
 Tester:Sergio Carneros
 Temperature:25Deg
 Manufacturer:Luz Negra.S.L

Number: 33.201
 Date:2022-11-04 10:12:30
 Humidity:57%
 Remarks:100cm Tira flexible

Spectrum Test Report



Color Parameters:

Chromaticity Coordinate: $x=0.3916$ $y=0.3573$ / $u'=0.2408$ $v'=0.4944$
 CCT=3532K (Duv=-0.0123) Dominant WL:Ld =589.0nm Purity=24.7%
 Ratio:R=22.6% G=73.1% B=4.3%; Peak WL:Lp=455.0nm FWHM=22.1nm
 Render Index:Ra=91.2 CRI=89.3 TM30:Rf=87 Rg=102 Lav=583.6nm
 R1 =96 R2 =96 R3 =93 R4 =91 R5 =96 R6 =91 R7 =86
 R8 =80 R9 =62 R10=95 R11=92 R12=76 R13=97 R14=98 R15=95

Photo Parameters:

Flux = 5118 lm Eff. : 127.73 lm/W Fe = 17.82 W Scotopic:8796.5 S/P:1.7189

Electrical parameters:

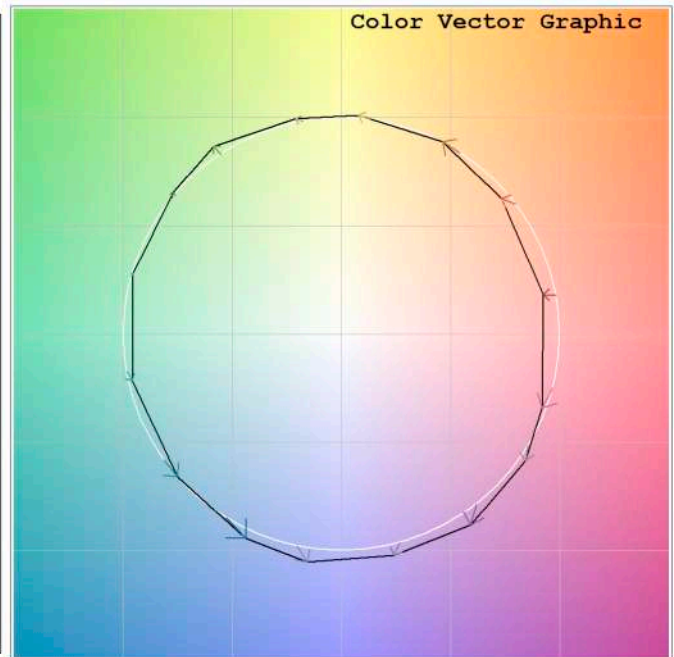
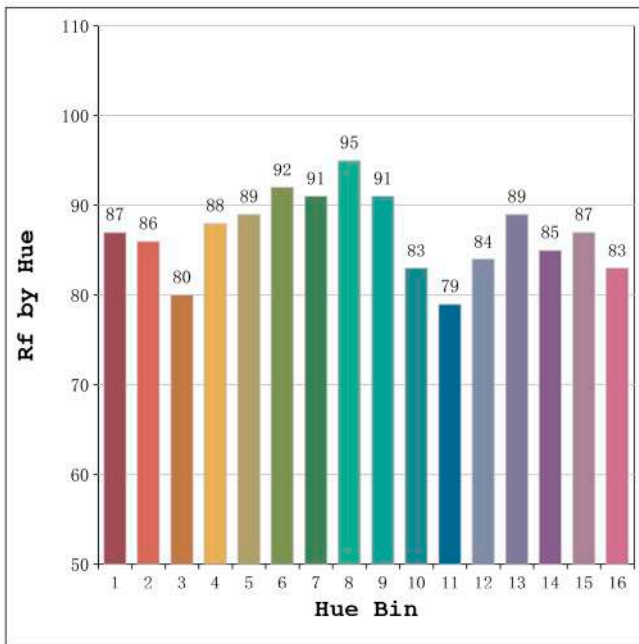
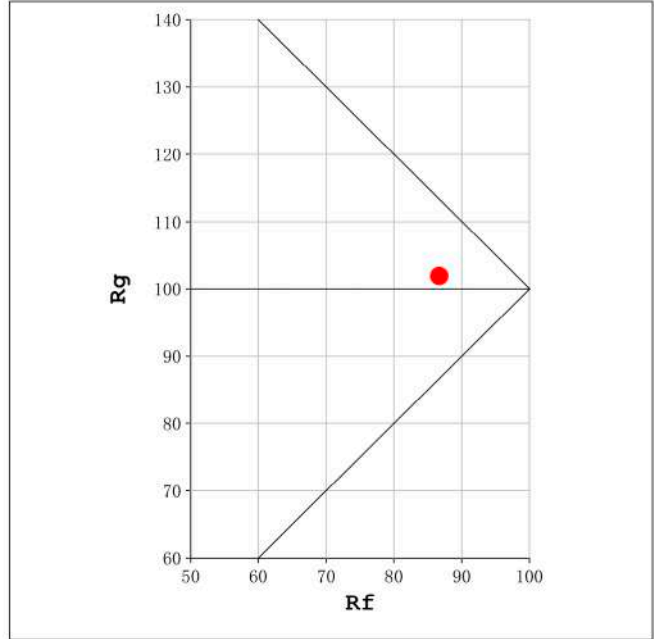
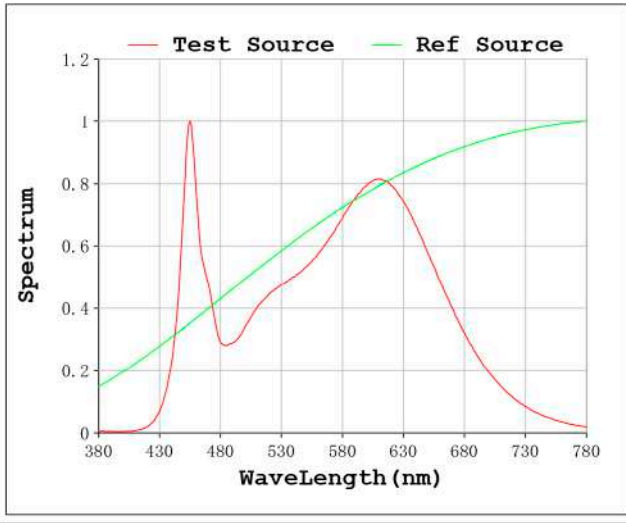
V = 23.998 V I = 1.670 A P = 40.07 W PF = 1.000

Status: Integral T = 278 ms Ip = 55344 (84%)

Model:Ecoled Blanes (CW+WW)
 Tester:Sergio Carneros
 Temperature:25Deg
 Manufacturer:Luz Negra.S.L

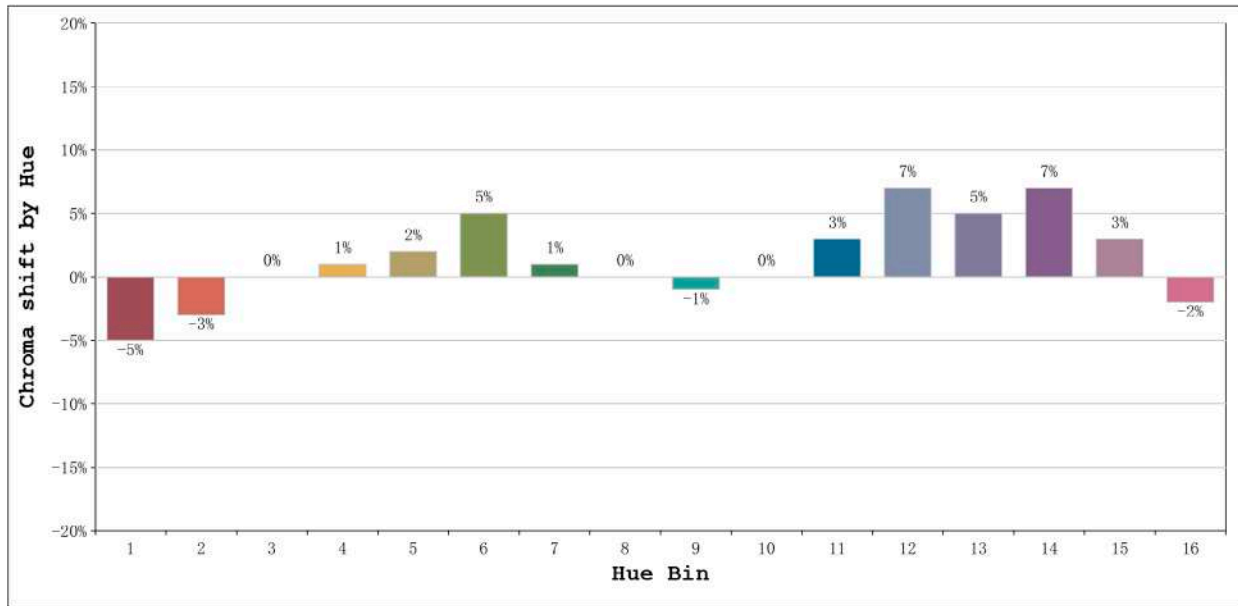
Number: 33.201
 Date:2022-11-04 10:07:50
 Humidity:57%
 Remarks:100cm Tira flexible

Rf: 87 CCT: 3532 K u': 0.2408
Rg: 102 Duv: -0.0123 v': 0.4944



Model:Ecoled Blanes (CW+WW)
Tester:Sergio Carneros
Temperature:25Deg
Manufacturer:Luz Negra.S.L

Number: 33.201
Date:2022-11-04 10:07:50
Humidity:57%
Remarks:100cm Tira flexible



Hue Bin	Hue Angle	Rf	Graphic shift(%)	
			Chroma	Hue
1	0.0° - 22.5°	87	-5	1
2	22.5° - 45.0°	86	-3	6
3	45.0° - 67.5°	80	0	9
4	67.5° - 90.0°	88	1	5
5	90.0° - 112.5°	89	2	3
6	112.5° - 135.0°	92	5	1
7	135.0° - 157.5°	91	1	-2
8	157.5° - 180.0°	95	0	0
9	180.0° - 202.5°	91	-1	4
10	202.5° - 225.0°	83	0	10
11	225.0° - 247.5°	79	3	12
12	247.5° - 270.0°	84	7	6
13	270.0° - 292.5°	89	5	-3
14	292.5° - 315.0°	85	7	-7
15	315.0° - 337.5°	87	3	-6
16	337.5° - 360.0°	83	-2	-9

Model:Ecoled Blancs (CW+WW)
 Tester:Sergio Carneros
 Temperature:25Deg
 Manufacturer:Luz Negra.S.L

Number: 33.201
 Date:2022-11-04 10:07:50
 Humidity:57%
 Remarks:100cm Tira flexible