

Our PROFESSIONAL led profile series is manufactured in high purity aluminium and available in white, black and grey textured lacquer. The profile is suitable for aisles and walls, where it offers Up&Down led lighting.

Its central channel houses the power supply and allows the cables to pass through for the circuit's closure, therefore reducing steep voltage drops.

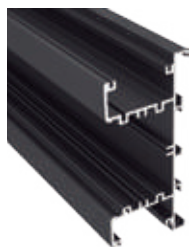
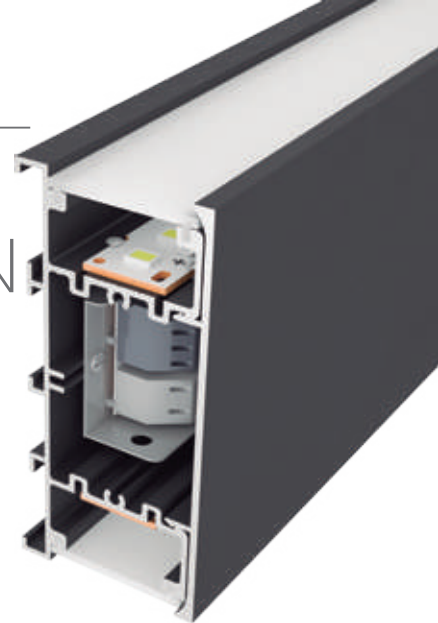
It has an aluminium front panel which can be easily removed for quick access and maintenance.

It has various options for the covers, such as our patented easy-On frosted polycarbonate, or Black&White versions and also a frosted or transparent microprism one, which both reduce the UGR considerably.

Suitable for led strips with a maximum width of 25mm and a power not greater than 30W/m. In order to obtain a more homogeneous illumination, while also improving the dot free effect, we recommend combining it with our Canovelles-Barcelona-Gomera-COB ecoled led strips. It can also be used with our rigid led strips.

We offer a 2 year guarantee on our profiles and covers.

NEW WASHINGTON



Aluminium profile

09.059	white lacquered	3m
09.060	black lacquered	3m
09.061	grey lacquered	3m
09.056	white lacquered	6m
09.057	black lacquered	6m
09.058	grey lacquered	6m



Aluminium front plate

09.065	white lacquered	3m
09.066	black lacquered	3m
09.067	grey lacquered	3m
09.062	white lacquered	6m
09.063	black lacquered	6m
09.064	grey lacquered	6m



"easy-ON" polycarbonate cover

18.070	frosted	6m
18.071	transparent microprism	6m
18.072	frosted microprism	6m
18.073	Black&White	6m



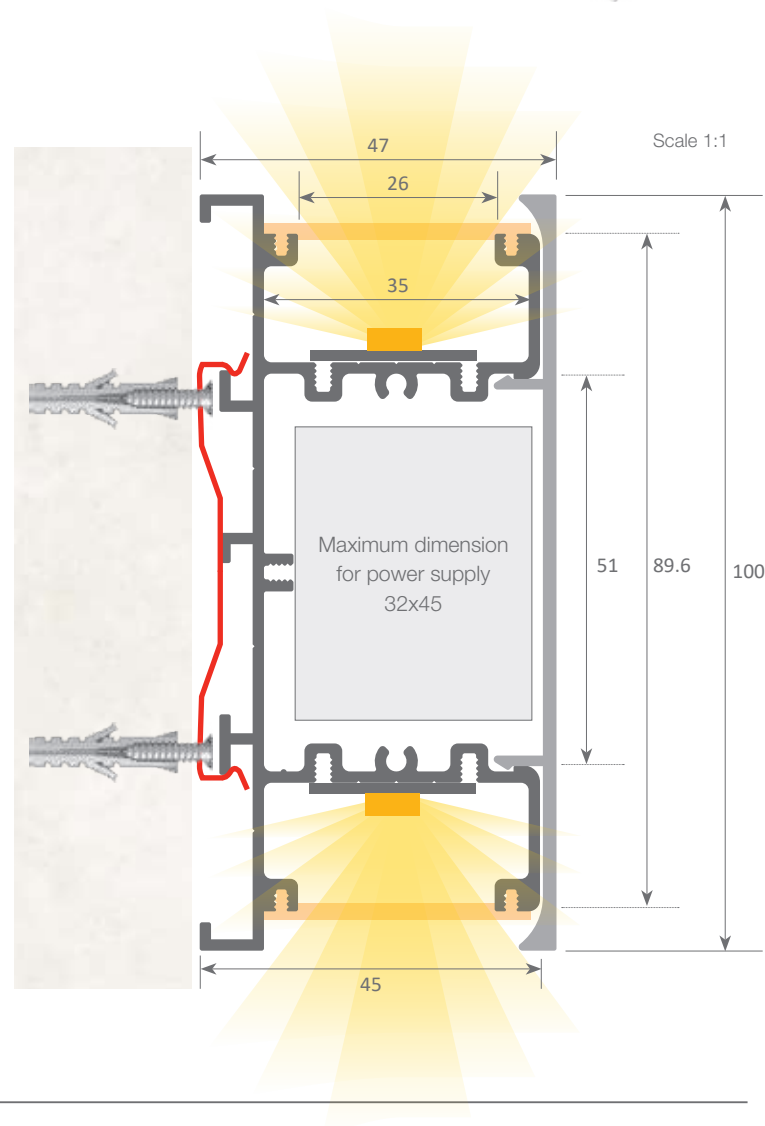
Tapas de metal

19.467	white lacquered
19.468	black lacquered
19.469	grey lacquered



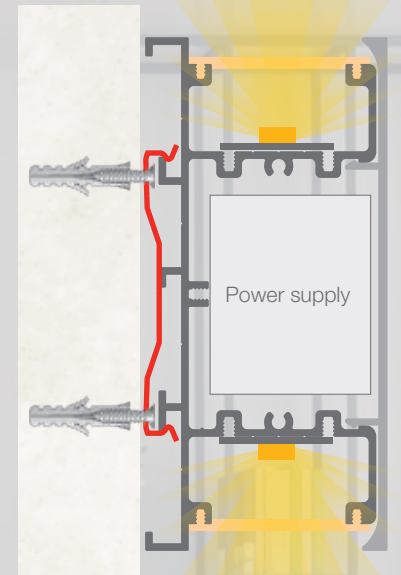
Clip

20.025	chrome steel
--------	--------------





Fixing with clip



Fixing with screw

