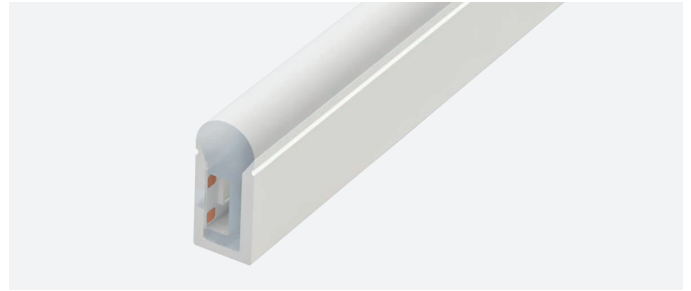


# Neon Sign

## Features:

- Silky, soft-touch silicone neon, with opaline front and integrated light source.
- Great for lighting up cornices and for creating decorative perimeter lighting, large letters and advertising texts, etc...
- Degree of protection: IP67
- Uses high quality silica gel and is resistant to yellowing, UV rays, saltpeper, high temperatures and is also flame retardant.
- Neon with side light emission.



Reference	Colour temp.	Lumens/m	Lumens/W	Energy efficiency
10.255	6000K	300	30	
10.256	4000K	279	27	
10.257	2700K	276	27	
10.258	Red	59	6	
10.259	Green	200	20	
10.260	Blue	32	3	
10.261	Amber	111	11	
10.262	Pink	99	10	

## Technical characteristics

### Technical data

Power (per metre)	10W/m
Power (full 5m roll)	50W
Voltage	24V
Degree of protection	IP67

### Led information

Number of leds per metre	125
--------------------------	-----

### Temperatures and operating conditions

Working tempetarure	-40°C / +55°C
Storage temperature	-40°C / +60°C

### Photometric data

Ra	80
Opening angle	130°

### Aspects

Dimmable	Yes <sup>*1</sup>
Installation	Surface / Recessed
Apt for	Indoor / Outdoor

<sup>\*1</sup> Adjustable with appropriate controllers.

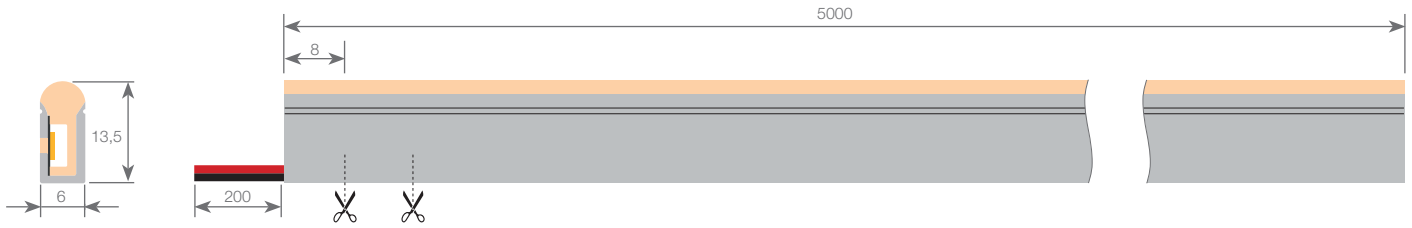
### Useful lifespan

Estimated lifespan	30.000h <sup>*2</sup>
Daily recommended use	18h

<sup>\*2</sup> Depending on the dissipation of the profile, the daily working hours and the external environmental working temperature.



# Neon Sign



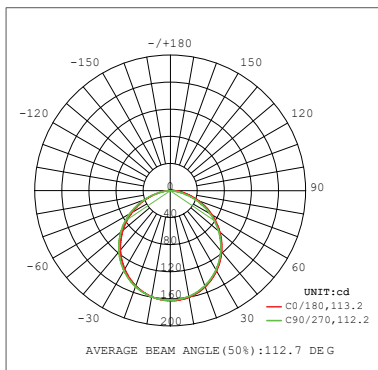
## Dimensions and weight

Length	5000mm	Cutting section length	8mm
Width	6mm	Cable length	200mm
Height	13.5mm	Cable section	2x0.5mm <sup>2</sup>

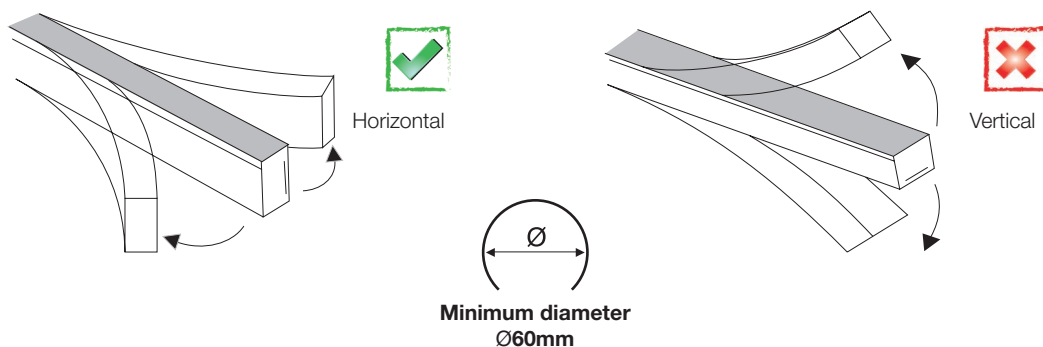
## Connection

Maximum connection in open circuit	5m	Maximum connection in closed circuit	10m
------------------------------------	----	--------------------------------------	-----

## Photometric curves

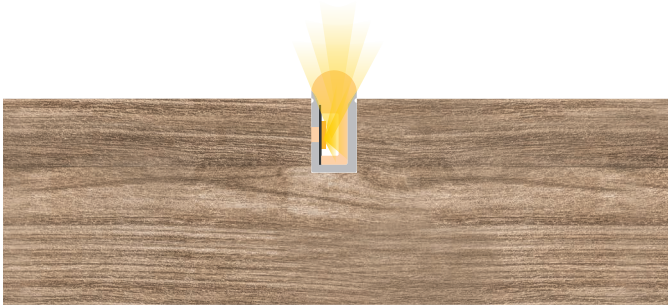


## Curve diameter

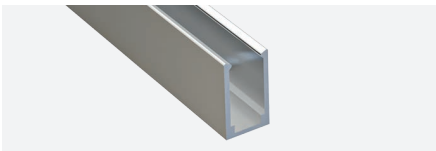


# Neon Sign

## Fixing



## Compatible accessories



**Fixing clip profile**  
10.276 1m anodised aluminium



**Die-cut profile**  
10.218 1m steel



**Silicone endcaps**  
19.162 frosted  
19.163 frosted with front cable hole



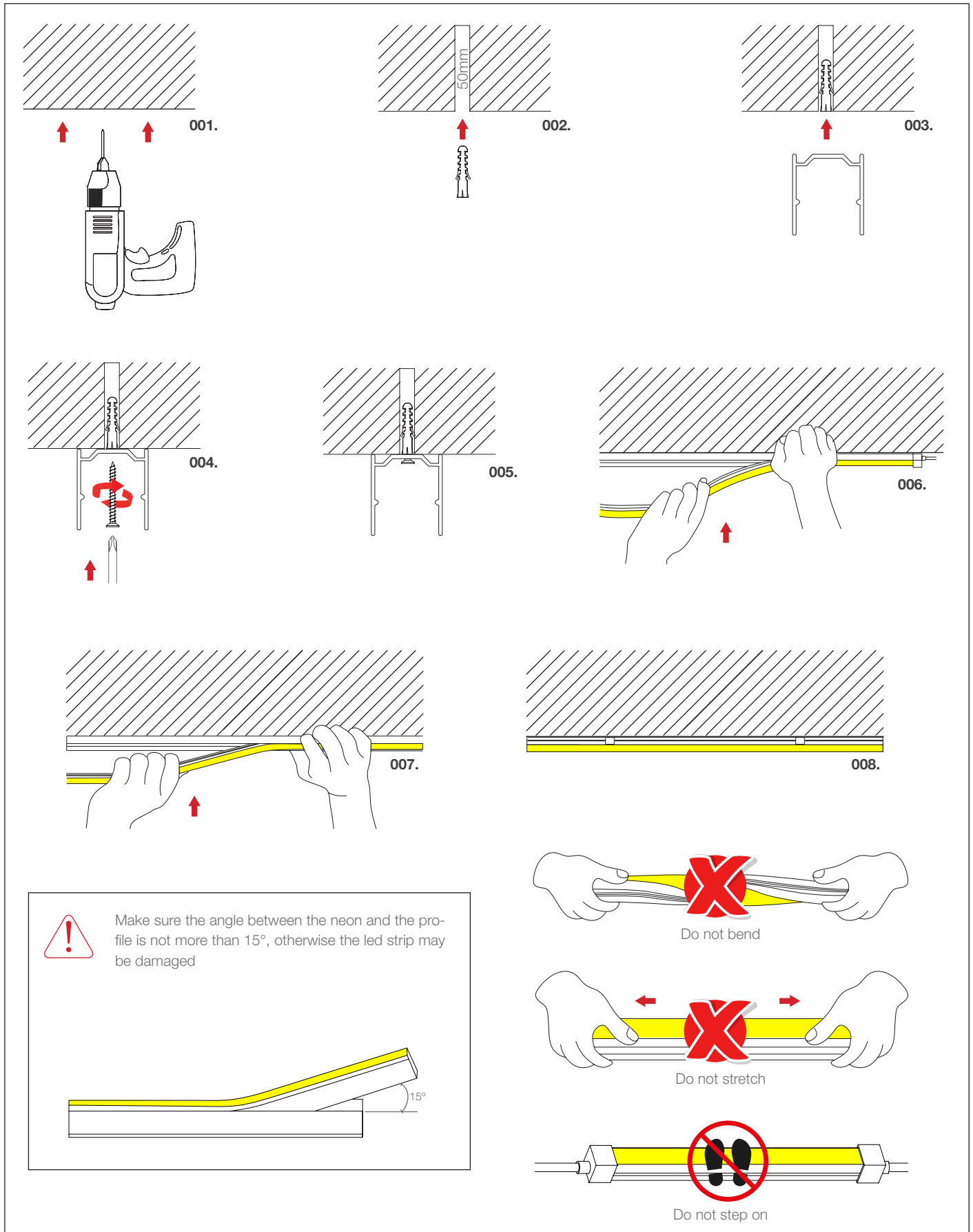
**Fixing clip**  
20.033 aluminium

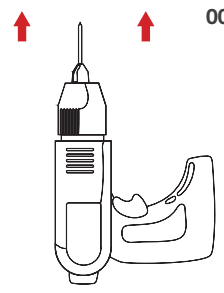


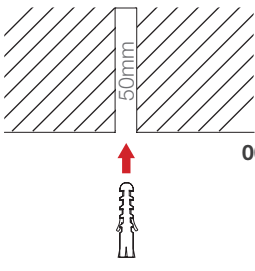
**Silicone for waterproofing**  
22.138 45ml opal  
22.140 45ml transparent

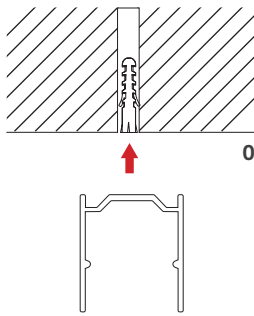
# Neon Sign

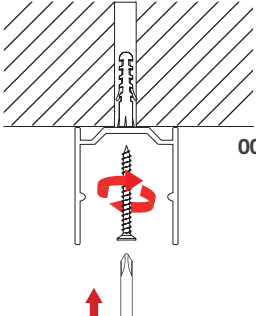
## Assembly instructions with clip profile or clip

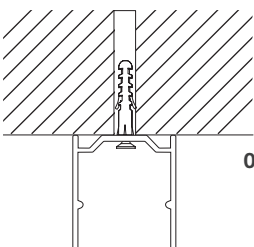


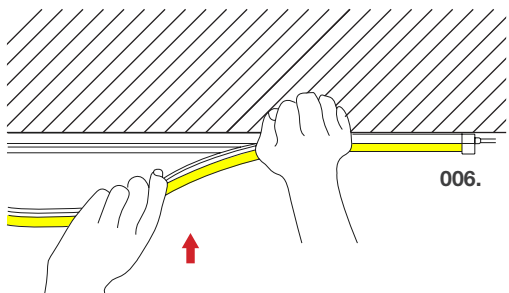
001. 

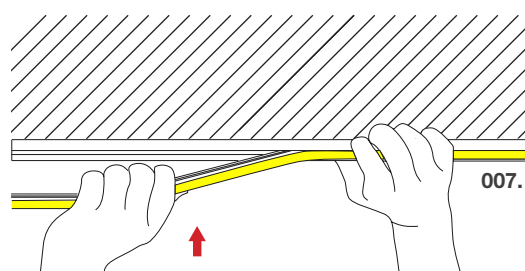
002. 

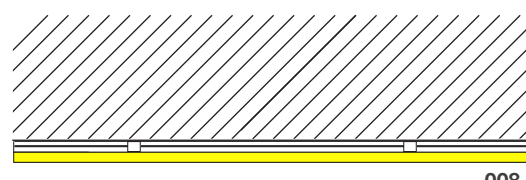
003. 


004. 

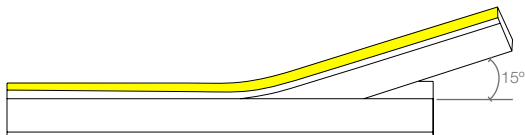
005. 


006. 


007. 


008. 


 Make sure the angle between the neon and the profile is not more than 15°, otherwise the led strip may be damaged




 Do not bend


 Do not stretch


 Do not step on