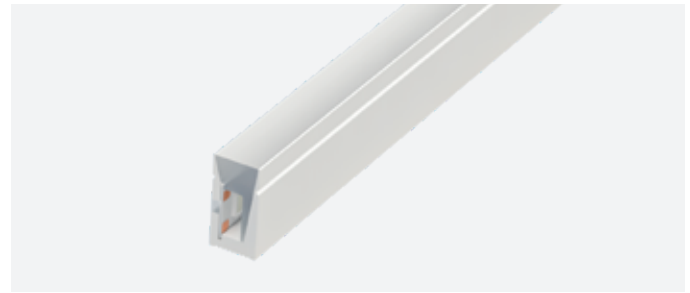





Neon Africa

Features:

- Silky, soft-touch silicone neon, with opaline front and integrated light source.
- Great for lighting up cornices and for creating decorative perimeter lighting, large letters and advertising texts, etc...
- Degree of protection: IP65
- Uses high quality silica gel and is resistant to yellowing, UV rays, saltpeper, high temperatures and is also flame retardant.
- Neon with side light emission.



Reference	Colour temp.	Lumens/m	Lumens/W	Energy efficiency
10.272	6000K	250	26	
10.271	4000K	290	30	
10.270	3000K	301	30	

Technical characteristics

Technical data

Power (per metre)	10W/m
Voltage	24V
Degree of protection	IP65

Led information

Number of leds per metre	180
--------------------------	-----

Temperatures and operating conditions

Working tempetarure	-40°C / +55°C
Storage temperature	-40°C / +60°C

Photometric data

CRI	>85
Opening angle	110°

Aspects

Dimmable	Yes ^{*1}
Installation	Surface / Recessed
Apt for	Indoor / Outdoor

^{*1} Adjustable with appropriate controllers.

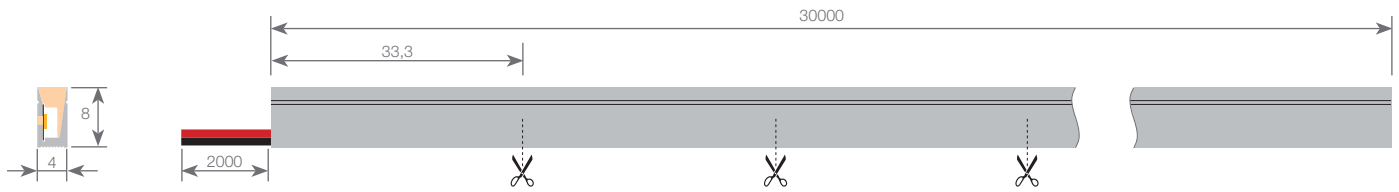
Useful lifespan

Estimated lifespan	30.000h ^{*2}
Daily recommended use	18h

^{*2} Depending on the dissipation of the profile, the daily working hours and the external environmental working temperature.



Neon Africa



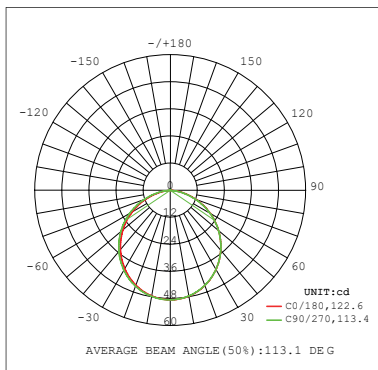
Dimensions and weight

Length	30000mm	Cutting section length	33.3mm
Width	4mm	Cable length	2000mm
Height	8mm	Cable section	2x0.5mm ²

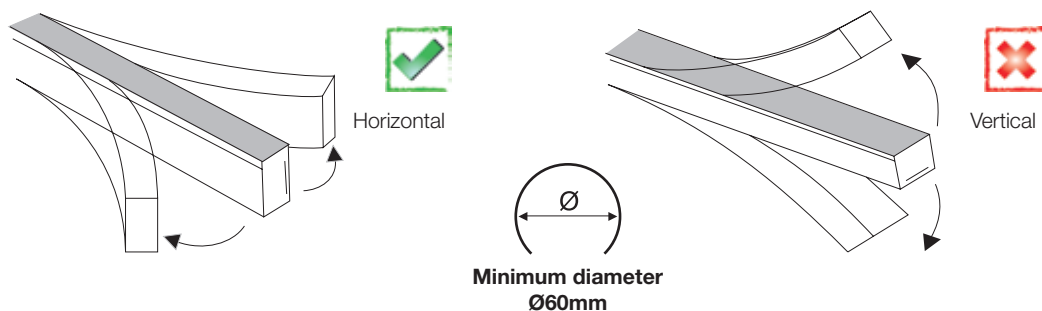
Connection

Maximum connection in open circuit	5m	Maximum connection in closed circuit	10m
------------------------------------	----	--------------------------------------	-----

Photometric curves

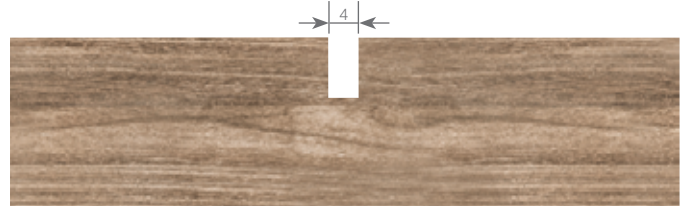
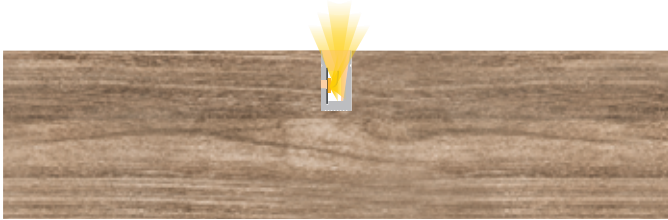


Curve diameter



Neon Africa

Fixing



Compatible accessories



Accessory kit

22.221 includes 10 endcaps without hole, 10 endcaps with cable hole, 20 endcaps fixing clips and 1 glue tube