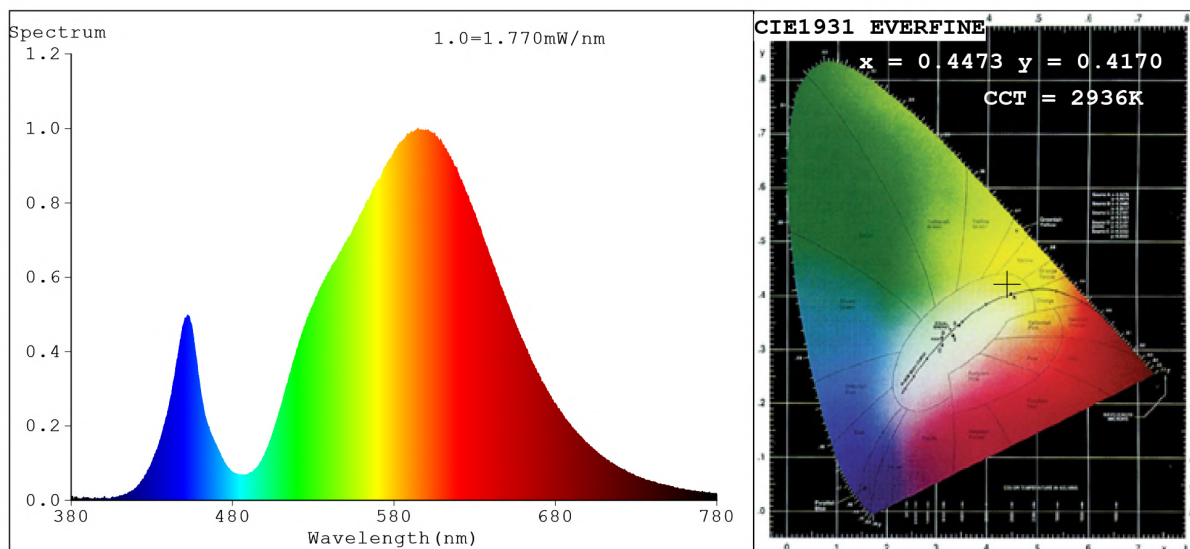


Spectrum Test Report



Color Parameters:

Chromaticity Coordinate: $x=0.4473$ $y=0.4170$ / $u'=0.2517$ $v'=0.5279$
 CCT=2936K (Duv=0.0037) Dominant WL: $\lambda_d = 581.9nm$ Purity=59.4%
 Ratio: R=21.6% G=77.1% B=1.3%; Peak WL: $\lambda_p = 594.9nm$ FWHM=125.3nm
 Render Index: Ra=71.2 CRI=63.0 TM30: Rf=72 Rg=94
 R1 =68 R2 =80 R3 =89 R4 =68 R5 =65 R6 =70 R7 =81
 R8 =48 R9 =0 R10=51 R11=61 R12=37 R13=70 R14=93 R15=62

Photo Parameters:

Flux = 87.77 lm Eff. : 4.58 lm/W Fe = 250.7 mW Scotopic: 98.92 S/P: 1.127

Electrical parameters:

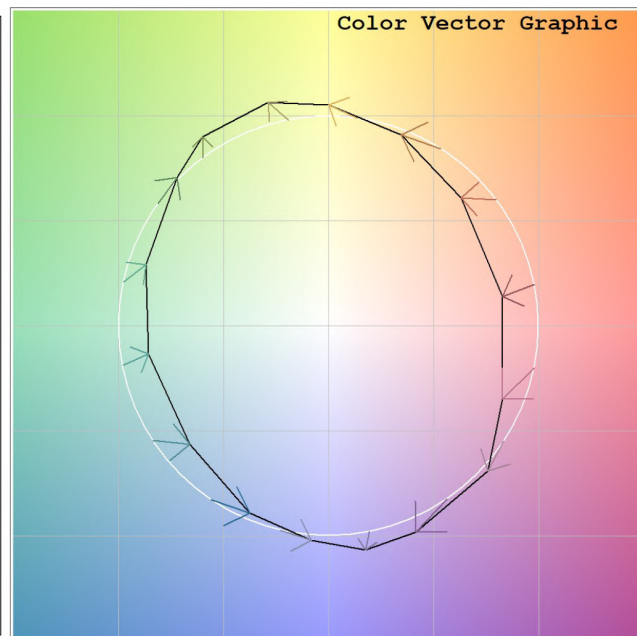
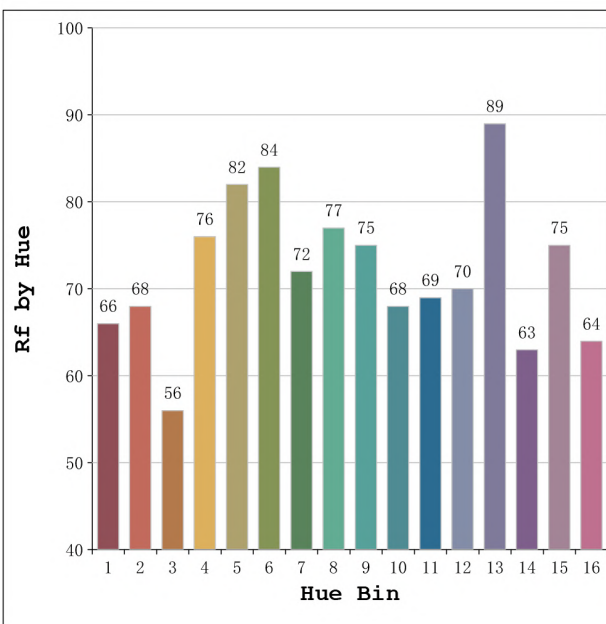
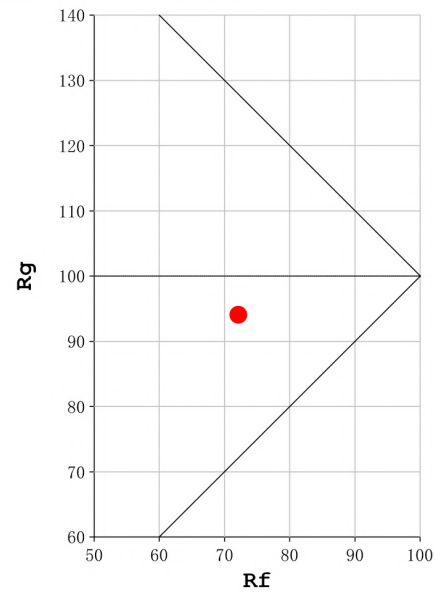
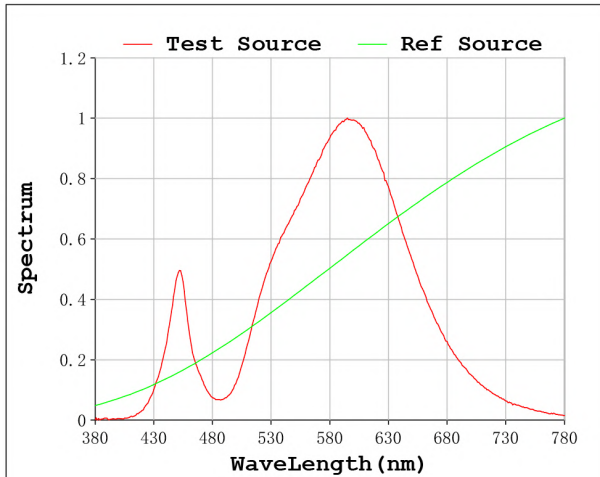
V = 11.998 V I = 1.596 A P = 19.15 W PF = 1.000

Status: Integral T = 5000 ms Ip = 18716 (29%)

Model: Ecoled Mérida 3000K
 Tester: Sergio Carneros
 Temperature: 25Deg
 Manufacturer: Luz negra

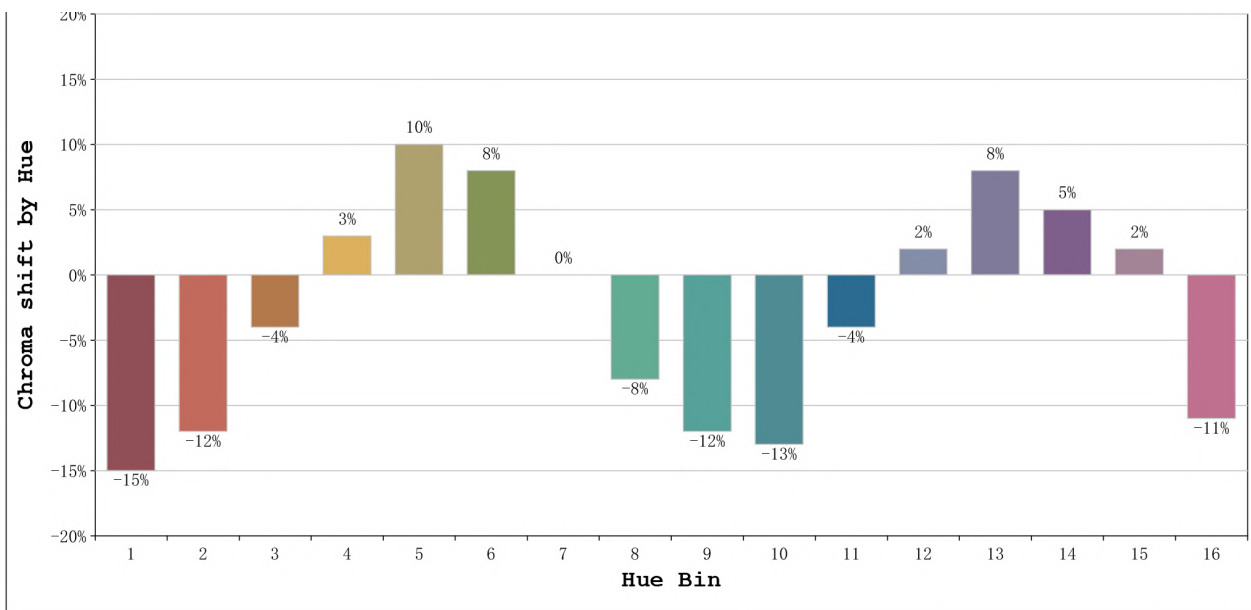
Number: 43.026
 Date: 2023-03-04 11:12:10
 Humidity: 57%
 Remarks: 20 modulos led

Rf: 72 **CCT: 2936 K** **u': 0.2517**
Rg: 94 **Duv: 0.0037** **v': 0.5279**



Model:Ecoled Mérida 3000K
 Tester:Sergio Carneros
 Temperature:25Deg
 Manufacturer:Luz negra

Number: 43.026
 Date:2023-03-04 11:12:10
 Humidity:57%
 Remarks:20 modulos led



| | | | Graphic shift(%) | |
|---------|-----------------|----|------------------|-----|
| Hue Bin | Hue Angle | Rf | Chroma | Hue |
| 1 | 0.0° - 22.5° | 66 | -15 | -2 |
| 2 | 22.5° - 45.0° | 68 | -12 | 10 |
| 3 | 45.0° - 67.5° | 56 | -4 | 19 |
| 4 | 67.5° - 90.0° | 76 | 3 | 15 |
| 5 | 90.0° - 112.5° | 82 | 10 | 8 |
| 6 | 112.5° - 135.0° | 84 | 8 | -4 |
| 7 | 135.0° - 157.5° | 72 | 0 | -14 |
| 8 | 157.5° - 180.0° | 77 | -8 | -9 |
| 9 | 180.0° - 202.5° | 75 | -12 | -2 |
| 10 | 202.5° - 225.0° | 68 | -13 | 11 |
| 11 | 225.0° - 247.5° | 69 | -4 | 19 |
| 12 | 247.5° - 270.0° | 70 | 2 | 15 |
| 13 | 270.0° - 292.5° | 89 | 8 | -2 |
| 14 | 292.5° - 315.0° | 63 | 5 | -20 |
| 15 | 315.0° - 337.5° | 75 | 2 | -15 |
| 16 | 337.5° - 360.0° | 64 | -11 | -17 |

Model:Ecoled Mérida 3000K
 Tester:Sergio Carneros
 Temperature:25Deg
 Manufacturer:Luz negra

Number: 43.026
 Date:2023-03-04 11:12:10
 Humidity:57%
 Remarks:20 modulos led