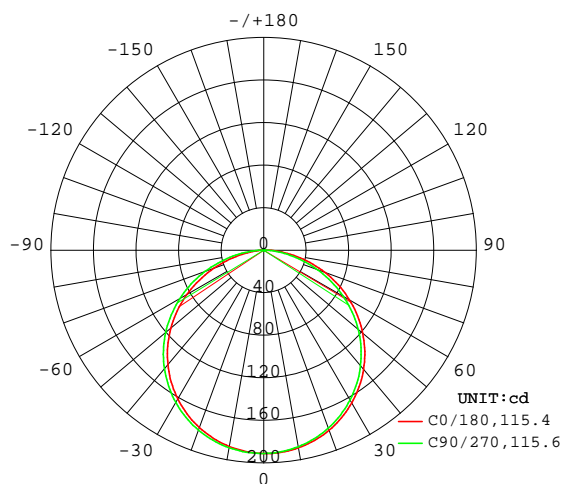


LUMINAIRE PHOTOMETRIC TEST REPORT

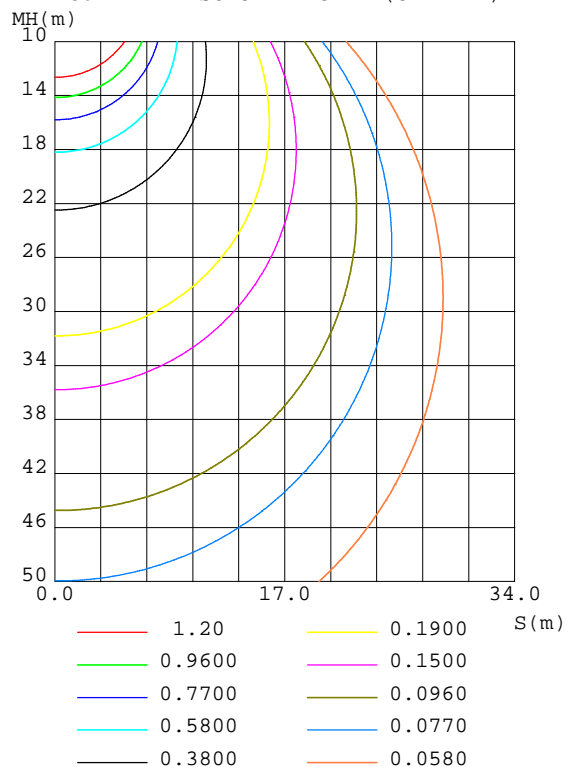
NAME: Tenerife 2850k	TYPE:	WEIGHT:
SPEC.:	DIM.:	SERIAL No.:
MFR.: Luz Negra s.l.	SUR.:22	Shielding Angle:

DATA OF LAMP		PHOTOMETRIC DATA Eff: 106.90 lm/W			
MODEL	33.010	I _{max} (cd)	191.1	S/MH(C0/180)	1.26
NOMINAL POWER(W)	9,6w/m	LOR(%)	100.0	S/MH(C90/270)	1.29
RATED VOLTAGE(V)	24	TOTAL FLUX(lm)	568.19	η UP,DN(C0-180)	0.2,49.6
NOMINAL FLUX(lm)	568.185	CIE CLASS	DIRECT	η UP,DN(C180-360)	0.2,50.0
LAMPS INSIDE	1	η up(%)	0.3	CIBSE SHR NOM	1.25
TEST VOLTAGE(V)	24	η down(%)	99.7	CIBSE SHR MAX	1.35

LUMINOUS INTENSITY DISTRIBUTION DIAGRAM



C0 PLANE ISOLUX DIAGRAM (UNIT:lx)



C Range: 0 - 360DEG
C Interval: 22.5DEG
Test Speed: HIGH
Temperature:25DEG
Operators:Marçal Huguet
Test Date:March 2021

γ Range: 0 - 110DEG
γ Interval: 1.0DEG
Test System:EVERFINE GO-2000B_V1 SYSTEM V2.0.400
Humidity:37%
Test Distance:8.200m [K=1.0000]
Remarks:

ZONAL FLUX DIAGRAM

ZONAL FLUX DIAGRAM:

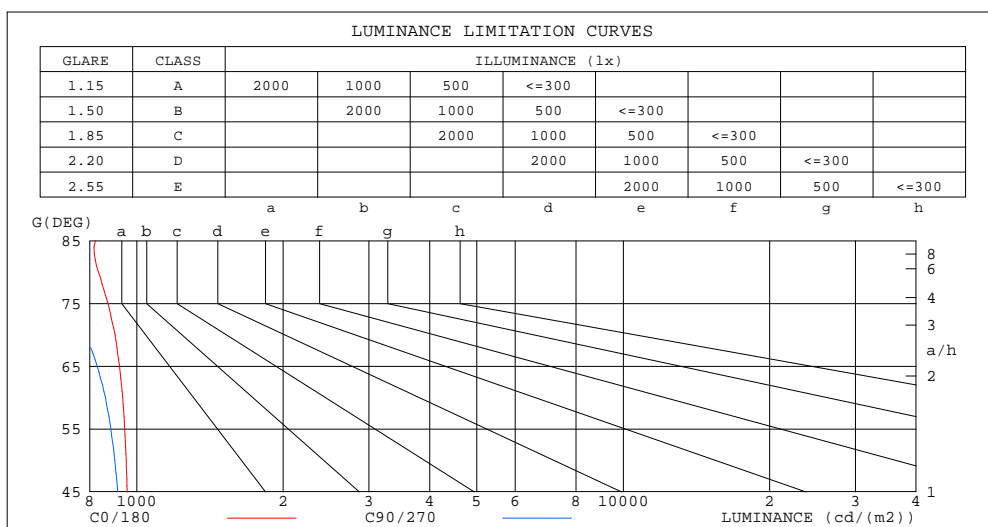
γ	C0	C45	C90	C135	C180	C225	C270	C315	γ	Φ zone	Φ total	%lum,lamp
10	188.6	188.2	187.5	187.2	187.3	187.9	188.5	188.8	0- 10	18.09	18.09	3.18,3.18
20	180.1	179.2	177.9	177.2	177.4	178.6	179.9	180.5	10- 20	51.99	70.09	12.3,12.3
30	165.8	164.4	162.5	161.3	161.6	163.4	165.4	166.4	20- 30	79.31	149.4	26.3,26.3
40	146.1	144.3	141.6	140.1	140.3	142.8	145.4	146.9	30- 40	96.53	245.9	43.3,43.3
50	121.6	119.5	116.0	113.9	114.1	117.2	120.4	122.5	40- 50	101.3	347.2	61.1,61.1
60	93.06	90.47	86.30	83.59	83.57	87.23	91.24	92.82	50- 60	92.70	439.9	77.4,77.4
70	61.37	58.54	53.77	50.46	50.03	54.24	58.91	61.35	60- 70	71.48	511.4	90,90
80	28.80	26.65	22.49	19.39	18.30	22.46	26.63	27.12	70- 80	41.73	553.1	97.3,97.3
90	3.502	4.547	0.3739	3.000	1.369	3.461	0.3667	5.167	80- 90	13.18	566.3	99.7,99.7
100	0.4220	0.4277	0.4329	0.4862	0.4998	0.4627	0.4508	0.4732	90-100	1.273	567.6	99.9,99.9
110	0.5345	0.7156	0.6299	0.6091	0.6866	0.7986	0.6606	0.6486	100-110	0.5971	568.2	100,100
120	0	0	0	0	0	0	0	0	110-120	0.0346	568.2	100,100
130	0	0	0	0	0	0	0	0	120-130	0	568.2	100,100
140	0	0	0	0	0	0	0	0	130-140	0	568.2	100,100
150	0	0	0	0	0	0	0	0	140-150	0	568.2	100,100
160	0	0	0	0	0	0	0	0	150-160	0	568.2	100,100
170	0	0	0	0	0	0	0	0	160-170	0	568.2	100,100
180	0	0	0	0	0	0	0	0	170-180	0	568.2	100,100
DEG	LUMINOUS INTENSITY:cd									UNIT:lm		

C Range: 0 - 360DEG
 C Interval: 22.5DEG
 Test Speed: HIGH
 Temperature:25DEG
 Operators:Marçal Huguet
 Test Date:March 2021

γ Range: 0 - 110DEG
 γ Interval: 1.0DEG
 Test System:EVERFINE GO-2000B_V1 SYSTEM V2.0.400
 Humidity:37%
 Test Distance:8.200m [K=1.0000]
 Remarks:

LUMINANCE LIMITATION CURVES

NAME: Tenerife 2850k	TYPE:	WEIGHT:
SPEC.:	DIM.:	SERIAL No.:
MFR.: Luz Negra s.l.	SUR.:22	Shielding Angle:



LUMINANCE cd/(m2)		
G(°)	C0/180	C90/270
85	822	605
80	834	647
75	872	724
70	902	785
65	921	830
60	936	862
55	945	885
50	951	901
45	955	914

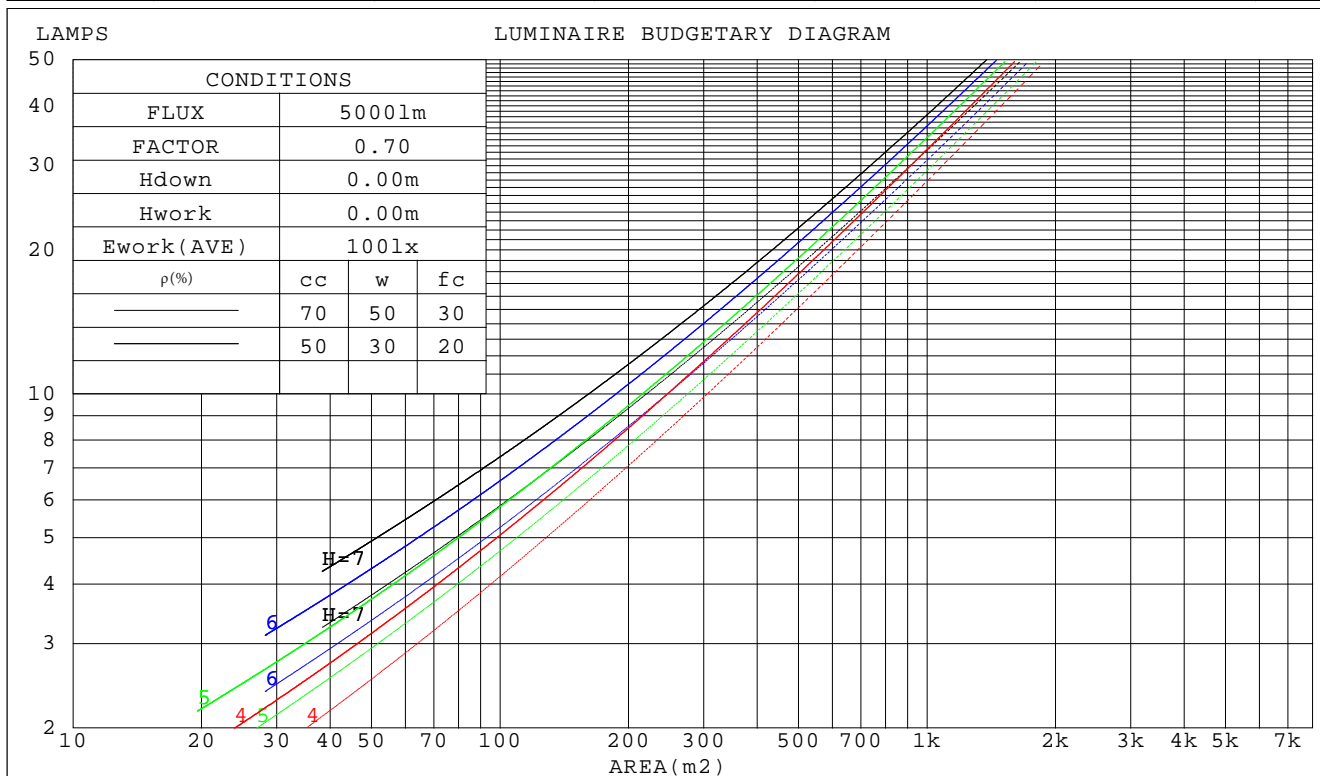
C Range: 0 - 360DEG
C Interval: 22.5DEG
Test Speed: HIGH
Temperature: 25DEG
Operators: Marçal Huguet
Test Date: March 2021

γ Range: 0 - 110DEG
 γ Interval: 1.0DEG
Test System: EVERFINE GO-2000B_V1 SYSTEM V2.0.400
Humidity: 37%
Test Distance: 8.200m [K=1.0000]
Remarks:

CU AND LUMINAIRE BUDGETARY ESTIMATE DIAGRAM

NAME: Tenerife 2850k	TYPE:	WEIGHT:
SPEC.:	DIM.:	SERIAL No.:
MFR.: Luz Negra s.l.	SUR.:22	Shielding Angle:

ρ_{cc}	80%			70%			50%			30%			10%			0
ρ_w	50%	30%	10%	50%	30%	10%	50%	30%	10%	50%	30%	10%	50%	30%	10%	0
ρ_{fc}	20%			20%			20%			20%			20%			0
RCR	RCR:Room Cavity Ratio Coefficients of Utilization(CU)															
0.0	1.19	1.19	1.19	1.16	1.16	1.16	1.11	1.11	1.11	1.06	1.06	1.06	1.02	1.02	1.02	.00
1.0	1.03	.99	.95	1.01	.97	.93	.97	.93	.90	.93	.90	.88	.89	.87	.85	.83
2.0	.90	.83	.77	.88	.81	.76	.84	.79	.74	.81	.76	.72	.78	.74	.71	.69
3.0	.79	.70	.64	.77	.69	.63	.74	.67	.62	.71	.66	.61	.69	.64	.60	.57
4.0	.70	.61	.54	.68	.60	.53	.66	.58	.53	.63	.57	.52	.61	.56	.51	.49
5.0	.62	.53	.46	.61	.52	.46	.59	.51	.45	.57	.50	.45	.55	.49	.44	.42
6.0	.56	.47	.40	.55	.46	.40	.53	.45	.40	.51	.44	.39	.50	.44	.39	.37
7.0	.51	.42	.35	.50	.41	.35	.48	.40	.35	.47	.40	.35	.45	.39	.34	.32
8.0	.46	.37	.32	.45	.37	.31	.44	.37	.31	.43	.36	.31	.41	.35	.31	.29
9.0	.42	.34	.28	.42	.34	.28	.40	.33	.28	.39	.33	.28	.38	.32	.28	.26
10.0	.39	.31	.26	.38	.31	.26	.37	.30	.25	.36	.30	.25	.35	.29	.25	.23



C Range: 0 - 360DEG
C Interval: 22.5DEG
Test Speed: HIGH
Temperature: 25DEG
Operators: Marçal Huguet
Test Date: March 2021

γ Range: 0 - 110DEG
 γ Interval: 1.0DEG
Test System: EVERFINE GO-2000B_V1 SYSTEM V2.0.400
Humidity: 37%
Test Distance: 8.200m [K=1.0000]
Remarks:

WEC AND CCEC

NAME: Tenerife 2850k	TYPE:	WEIGHT:
SPEC.:	DIM.:	SERIAL No.:
MFR.: Luz Negra s.l.	SUR.:22	Shielding Angle:

ρ_{CC}	80%			70%			50%			30%			10%			0
ρ_W	50%	30%	10%	50%	30%	10%	50%	30%	10%	50%	30%	10%	50%	30%	10%	0
ρ_{fC}	20%			20%			20%			20%			20%			0
RCR	RCR:Room Cavity Ratio Wall Exitance Coefficients(WEC)															
0.0																
1.0	.317	.181	.057	.310	.177	.056	.297	.170	.054	.284	.164	.053	.273	.158	.051	
2.0	.297	.163	.050	.290	.160	.049	.279	.155	.048	.268	.150	.047	.257	.146	.046	
3.0	.274	.146	.044	.268	.144	.043	.258	.140	.042	.248	.136	.042	.239	.132	.041	
4.0	.252	.131	.039	.247	.129	.038	.238	.126	.038	.229	.123	.037	.221	.120	.037	
5.0	.233	.119	.034	.228	.117	.034	.220	.115	.034	.212	.112	.033	.205	.110	.033	
6.0	.216	.108	.031	.212	.107	.031	.204	.105	.030	.197	.103	.030	.191	.100	.030	
7.0	.200	.099	.028	.197	.098	.028	.190	.096	.028	.184	.094	.027	.178	.093	.027	
8.0	.187	.091	.026	.184	.091	.026	.178	.089	.025	.172	.087	.025	.167	.086	.025	
9.0	.175	.085	.024	.172	.084	.024	.167	.083	.023	.162	.081	.023	.157	.080	.023	
10.0	.165	.079	.022	.162	.078	.022	.157	.077	.022	.153	.076	.022	.148	.075	.021	

ρ_{CC}	80%			70%			50%			30%			10%			0
ρ_W	50%	30%	10%	50%	30%	10%	50%	30%	10%	50%	30%	10%	50%	30%	10%	0
ρ_{fC}	20%			20%			20%			20%			20%			0
RCR	RCR:Room Cavity Ratio Ceiling Cavity Exitance Coefficients(CCEC)															
0.0	.193	.193	.193	.165	.165	.165	.113	.113	.113	.065	.065	.065	.021	.021	.021	
1.0	.183	.159	.136	.157	.136	.117	.107	.094	.081	.062	.054	.047	.020	.017	.015	
2.0	.176	.134	.100	.150	.116	.086	.103	.080	.060	.059	.047	.035	.019	.015	.012	
3.0	.168	.117	.076	.144	.101	.066	.099	.070	.046	.057	.041	.027	.018	.013	.009	
4.0	.160	.104	.060	.137	.090	.053	.095	.062	.037	.055	.037	.022	.018	.012	.007	
5.0	.153	.093	.049	.131	.081	.043	.090	.056	.030	.052	.033	.018	.017	.011	.006	
6.0	.146	.085	.041	.125	.074	.036	.086	.052	.026	.050	.030	.015	.016	.010	.005	
7.0	.139	.078	.036	.119	.068	.031	.082	.047	.022	.048	.028	.013	.015	.009	.004	
8.0	.132	.072	.031	.114	.063	.027	.079	.044	.019	.046	.026	.011	.015	.009	.004	
9.0	.126	.067	.028	.109	.058	.024	.075	.041	.017	.044	.024	.010	.014	.008	.003	
10.0	.120	.063	.025	.104	.055	.022	.072	.039	.015	.042	.023	.009	.014	.007	.003	

C Range: 0 - 360DEG
 C Interval: 22.5DEG
 Test Speed: HIGH
 Temperature:25DEG
 Operators:Marçal Huguet
 Test Date:March 2021

γ Range: 0 - 110DEG
 γ Interval: 1.0DEG
 Test System:EVERFINE GO-2000B_V1 SYSTEM V2.0.400
 Humidity:37%
 Test Distance:8.200m [K=1.0000]
 Remarks:

UGR(Unified Glare Rating) Table

NAME: Tenerife 2850k					TYPE:		WEIGHT:				
SPEC.:					DIM.:		SERIAL No.:				
MFR.: Luz Negra s.l.					SUR.:22		Shielding Angle:				
ceiling/cavity	0.7	0.7	0.5	0.5	0.3	0.7	0.7	0.5	0.5	0.3	
walls	0.5	0.3	0.5	0.3	0.3	0.5	0.3	0.5	0.3	0.3	
working plane	0.2	0.2	0.2	0.2	0.2	0.2	0.2	0.2	0.2	0.2	
Room dimensions		Viewed crosswise					Viewed endwise				
x = 2H y = 2H	2H	14.8	16.3	15.1	16.5	16.7	14.5	16.0	14.8	16.2	16.4
	3H	16.5	17.9	16.8	18.1	18.4	16.0	17.4	16.3	17.7	17.9
	4H	17.2	18.5	17.5	18.8	19.1	16.6	18.0	16.9	18.2	18.5
	6H	17.7	19.0	18.1	19.3	19.6	17.1	18.3	17.4	18.6	18.9
	8H	17.9	19.2	18.3	19.5	19.8	17.2	18.4	17.5	18.7	19.0
	12H	18.1	19.3	18.5	19.6	19.9	17.3	18.5	17.6	18.8	19.1
4H	2H	15.4	16.7	15.7	17.0	17.3	15.2	16.5	15.5	16.8	17.0
	3H	17.3	18.5	17.6	18.8	19.1	16.9	18.1	17.3	18.4	18.7
	4H	18.1	19.2	18.5	19.5	19.9	17.6	18.7	18.0	19.0	19.4
	6H	18.8	19.8	19.2	20.1	20.5	18.2	19.2	18.6	19.5	19.9
	8H	19.1	20.0	19.5	20.4	20.8	18.4	19.3	18.8	19.7	20.1
	12H	19.3	20.1	19.7	20.5	20.9	18.5	19.4	19.0	19.8	20.2
8H	4H	18.4	19.3	18.8	19.7	20.1	18.0	18.9	18.4	19.2	19.6
	6H	19.3	20.0	19.7	20.4	20.9	18.7	19.5	19.2	19.9	20.3
	8H	19.6	20.3	20.1	20.7	21.2	19.0	19.7	19.5	20.1	20.6
	12H	20.0	20.5	20.4	21.0	21.5	19.2	19.8	19.7	20.3	20.8
12H	4H	18.4	19.2	18.9	19.6	20.1	18.0	18.8	18.4	19.2	19.6
	6H	19.3	20.0	19.8	20.4	20.9	18.8	19.5	19.3	19.9	20.4
	8H	19.8	20.3	20.2	20.8	21.3	19.1	19.7	19.6	20.2	20.7
Variations with the observer position at spacings:											
S = 1.0H	+ 0.1 / - 0.2					+ 0.1 / - 0.2					
1.5H	+ 0.2 / - 0.3					+ 0.2 / - 0.3					
2.0H	+ 0.1 / - 0.3					+ 0.2 / - 0.4					

CIE Pub.117, 568.2 lm Total Lamp Luminous Flux Correct ($8\log(F/F_0) = -2.0$)

C Range: 0 - 360DEG
C Interval: 22.5DEG
Test Speed: HIGH
Temperature:25DEG
Operators:Marçal Huguet
Test Date:March 2021

γ Range: 0 - 110DEG
 γ Interval: 1.0DEG
Test System:EVERFINE GO-2000B_V1 SYSTEM V2.0.400
Humidity:37%
Test Distance:8.200m [K=1.0000]
Remarks:

UTILIZATION FACTORS TABLE

NAME: Tenerife 2850k	TYPE:	WEIGHT:
SPEC.:	DIM.:	SERIAL No.:
MFR.: Luz Negra s.l.	SUR.:22	Shielding Angle:

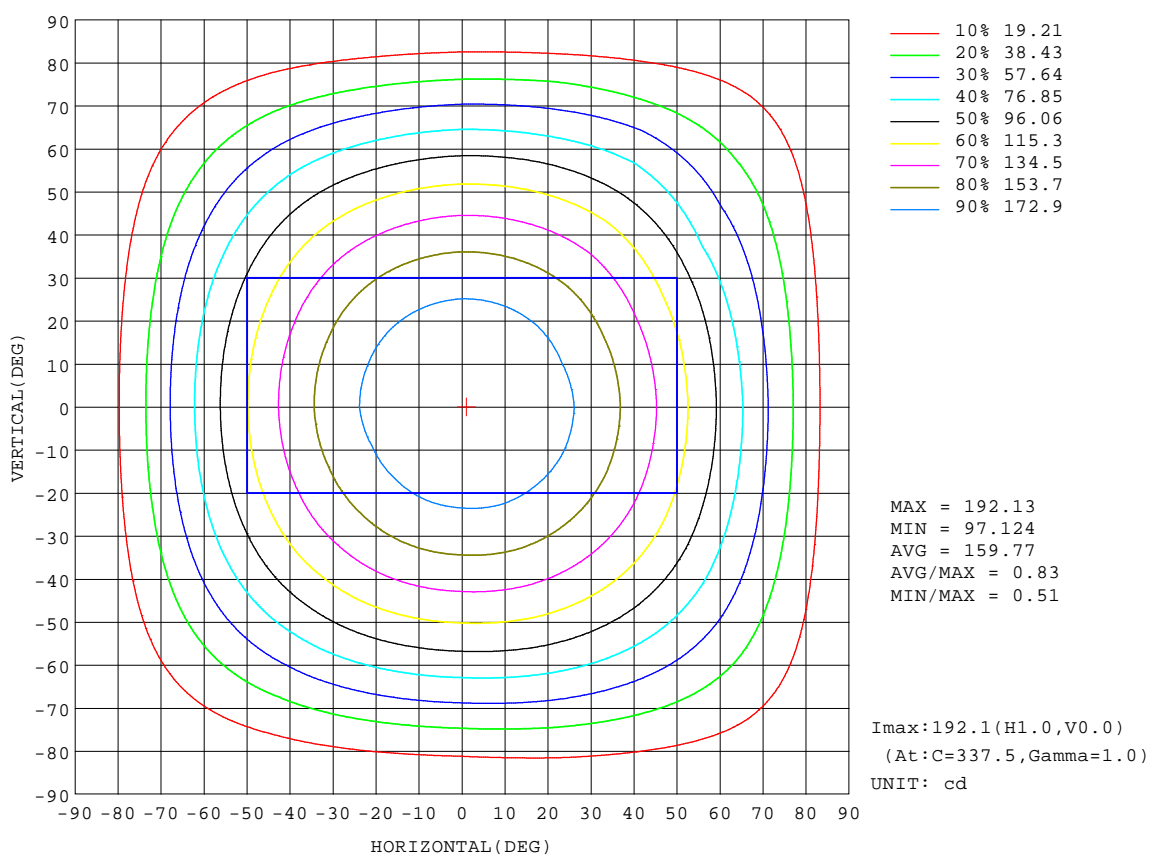
REFLECTANCE										
Ceiling	0.8	0.8	0.8	0.7	0.7	0.7	0.5	0.5	0.5	0
Walls	0.7	0.5	0.3	0.7	0.5	0.3	0.7	0.5	0.3	0
Working plane	0.2	0.2	0.2	0.2	0.2	0.2	0.2	0.2	0.2	0
ROOM INDEX	UTILIZATION FACTORS(PERCENT) $k(RI) \times RCR = 5$									
k = 0.60	57	45	38	56	45	38	55	44	38	31
0.80	67	55	47	66	55	47	64	54	47	40
1.00	75	64	56	74	63	56	72	65	56	48
1.25	82	72	64	81	71	64	78	69	63	56
1.50	87	77	70	86	76	70	83	75	69	61
2.00	94	86	79	92	84	78	89	82	77	69
2.50	98	90	84	96	89	83	92	86	81	73
3.00	102	95	89	99	93	88	95	90	86	77
4.00	106	100	95	103	98	94	99	95	91	82
5.00	108	103	99	106	101	97	101	98	94	85
ROOM INDEX	UF(total)									Direct
According to DIN EN 13032-2 2004			Suspended					SHRNOM = 1.25		

C Range: 0 - 360DEG
C Interval: 22.5DEG
Test Speed: HIGH
Temperature:25DEG
Operators:Marçal Huguet
Test Date:March 2021

γ Range: 0 - 110DEG
 γ Interval: 1.0DEG
Test System:EVERFINE GO-2000B_V1 SYSTEM V2.0.400
Humidity:37%
Test Distance:8.200m [K=1.0000]
Remarks:

ISOCANDELA DIAGRAM

NAME: Tenerife 2850k	TYPE:	WEIGHT:
SPEC.:	DIM.:	SERIAL No.:
MFR.: Luz Negra s.l.	SUR.:22	Shielding Angle:

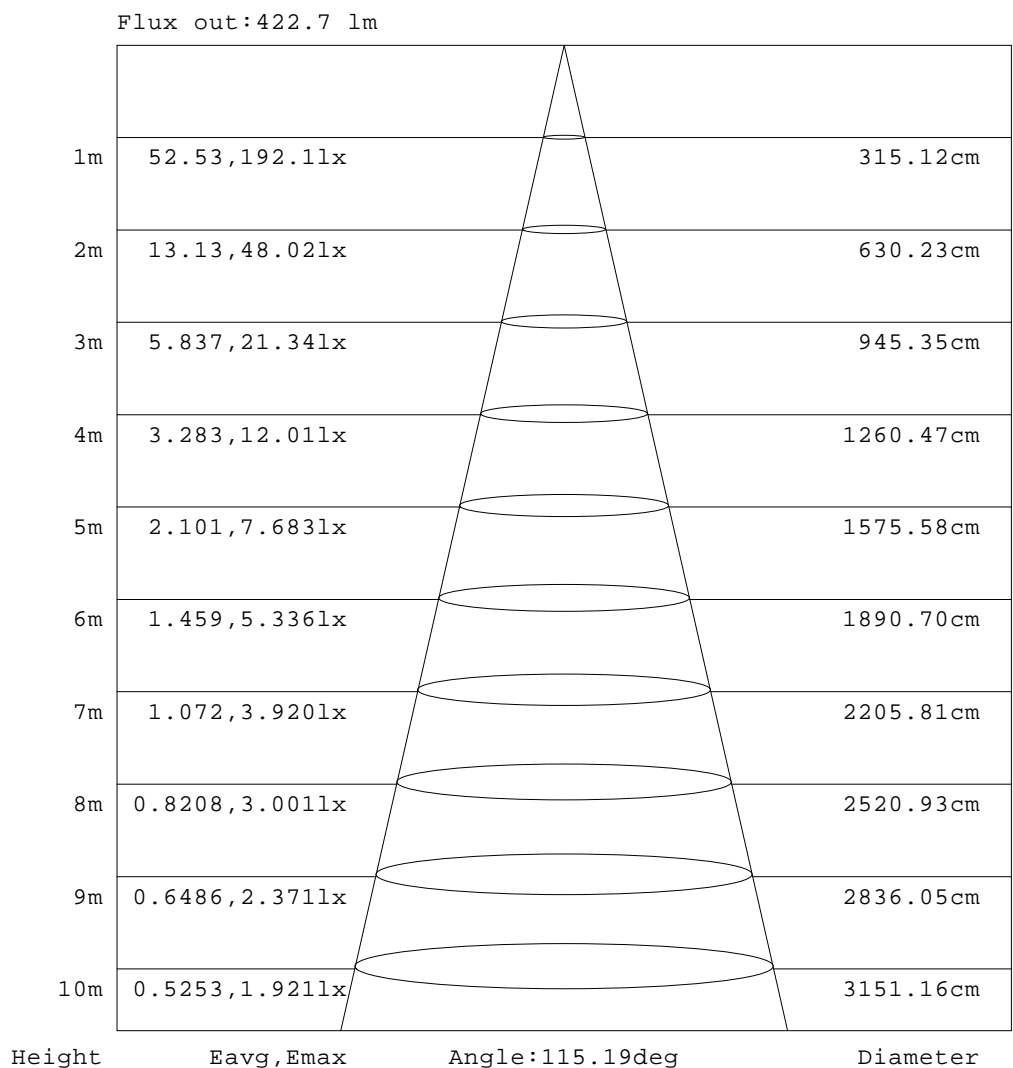


C Range: 0 - 360DEG
C Interval: 22.5DEG
Test Speed: HIGH
Temperature:25DEG
Operators:Marçal Huguet
Test Date:March 2021

γ Range: 0 - 110DEG
γ Interval: 1.0DEG
Test System:EVERFINE GO-2000B_V1 SYSTEM V2.0.400
Humidity:37%
Test Distance:8.200m [K=1.0000]
Remarks:

AAI Figure

NAME: Tenerife 2850k	TYPE:	WEIGHT:
SPEC.:	DIM.:	SERIAL No.:
MFR.: Luz Negra s.l.	SUR.:22	Shielding Angle:



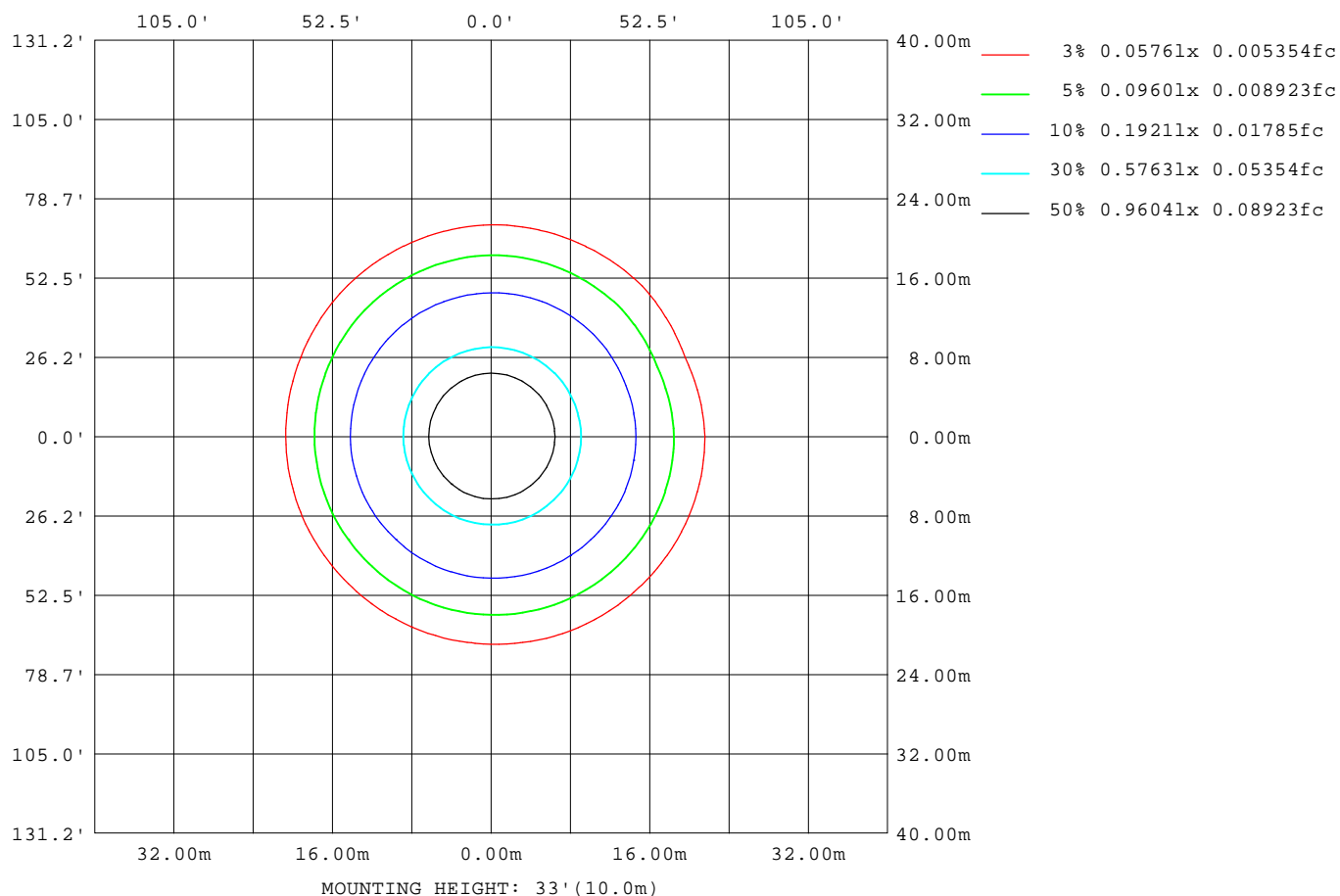
Note: The Curves indicate the illuminated area and the average illumination when the luminaire is at different distance.

C Range: 0 - 360DEG
C Interval: 22.5DEG
Test Speed: HIGH
Temperature: 25DEG
Operators: Marçal Huguet
Test Date: March 2021

γ Range: 0 - 110DEG
γ Interval: 1.0DEG
Test System: EVERFINE GO-2000B_V1 SYSTEM V2.0.400
Humidity: 37%
Test Distance: 8.200m [K=1.0000]
Remarks:

ISOLUX DIAGRAM

NAME: Tenerife 2850k	TYPE:	WEIGHT:
SPEC.:	DIM.:	SERIAL No.:
MFR.: Luz Negra s.l.	SUR.:22	Shielding Angle:



C Range: 0 - 360DEG
C Interval: 22.5DEG
Test Speed: HIGH
Temperature: 25DEG
Operators: Marçal Huguet
Test Date: March 2021

γ Range: 0 - 110DEG
γ Interval: 1.0DEG
Test System: EVERFINE GO-2000B_V1 SYSTEM V2.0.400
Humidity: 37%
Test Distance: 8.200m [K=1.0000]
Remarks:

LED Avg.L Report

NAME: Tenerife 2850k	TYPE:	WEIGHT:
SPEC.:	DIM.:	SERIAL No.:
MFR.: Luz Negra s.l.	SUR.:22	Shielding Angle:

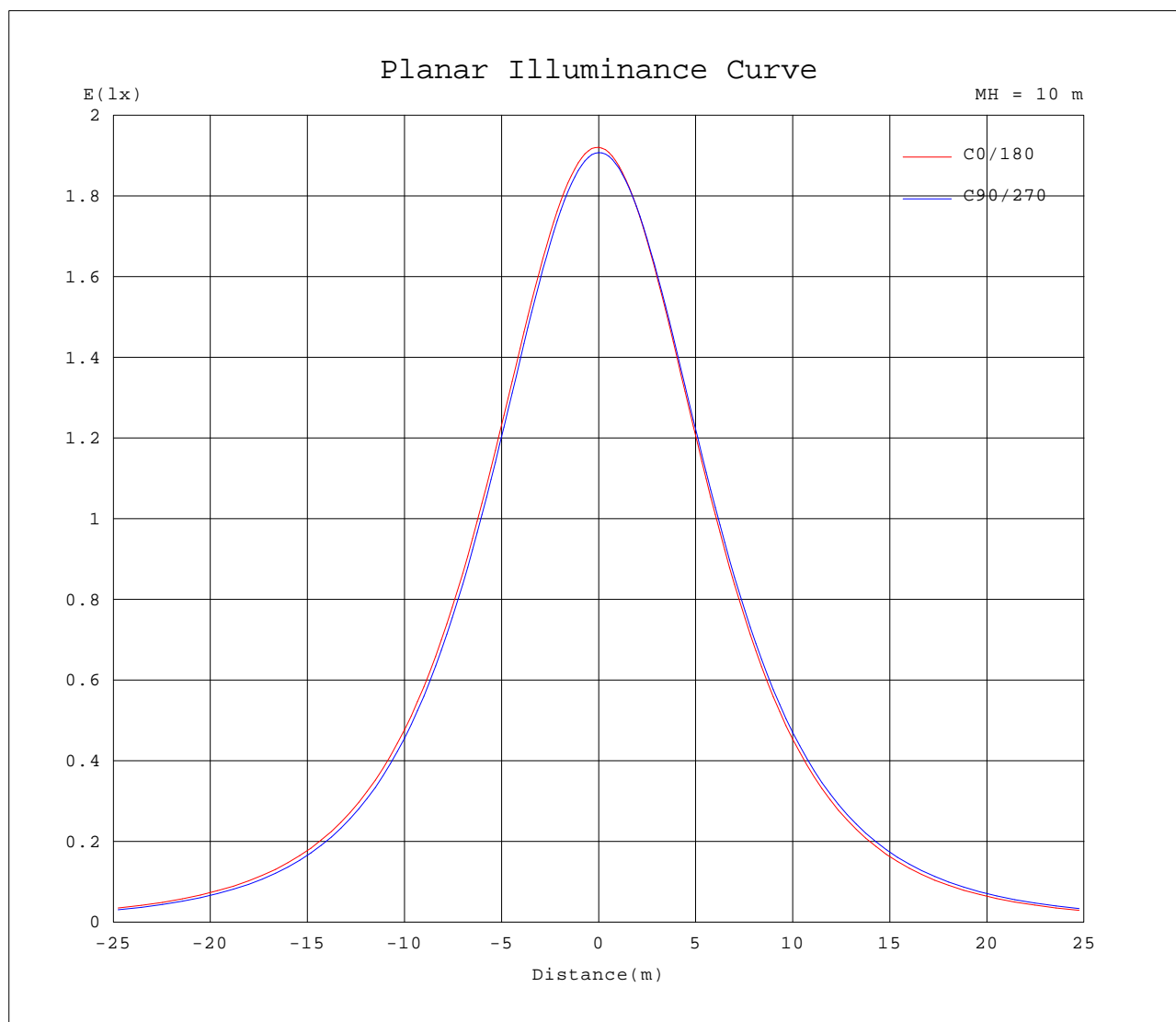
AvgL	cd/m2
L_0~180(65)av	855
L_0~180(75)av	756
L_0~180(85)av	608
L_90~270(65)av	861
L_90~270(75)av	769
L_90~270(85)av	651
L_45(65)av	859
L_45(75)av	758
L_45(85)av	658

Standard: GB/T 29293-2012

C Range: 0 - 360DEG
C Interval: 22.5DEG
Test Speed: HIGH
Temperature:25DEG
Operators:Marçal Huguet
Test Date:March 2021

γ Range: 0 - 110DEG
γ Interval: 1.0DEG
Test System:EVERFINE GO-2000B_V1 SYSTEM V2.0.400
Humidity:37%
Test Distance:8.200m [K=1.0000]
Remarks:

Planar Illuminance Curve



C Range: 0 - 360DEG
 C Interval: 22.5DEG
 Test Speed: HIGH
 Temperature: 25DEG
 Operators: Marçal Huguet
 Test Date: March 2021

γ Range: 0 - 110DEG
 γ Interval: 1.0DEG
 Test System: EVERFINE GO-2000B_V1 SYSTEM V2.0.400
 Humidity: 37%
 Test Distance: 8.200m [K=1.0000]
 Remarks:

LUMINOUS DISTRIBUTION INTENSITY DATA

NAME: Tenerife 2850k	TYPE:	WEIGHT:
SPEC.:	DIM.:	SERIAL No.:
MFR.: Luz Negra s.l.	SUR.:22	Shielding Angle:

Table--1

UNIT: cd

C (DEG) γ (DEG)	0	22.5	45	67.5	90	112.5	135	157.5	180	202.5	225	247.5	270	292.5	315	337.5			
0	191	191	191	191	191	191	191	191	191	191	191	191	191	191	191	191			
5	191	191	190	190	190	190	190	190	190	190	190	190	191	191	191	191			
10	189	188	188	188	188	187	187	187	187	187	188	188	189	189	189	189			
15	185	185	184	184	183	183	183	183	183	183	184	184	185	185	185	185			
20	180	180	179	179	178	178	177	177	177	178	179	179	180	180	181	180			
25	174	173	173	172	171	170	170	170	170	171	172	172	173	174	174	174			
30	166	165	164	164	162	162	161	161	162	162	163	164	165	166	166	166			
35	157	156	155	154	153	152	151	152	152	152	154	155	156	157	157	157			
40	146	146	144	143	142	141	140	140	140	141	143	144	145	146	147	146			
45	134	134	132	131	129	128	128	128	128	129	131	132	134	134	135	134			
50	122	121	119	118	116	115	114	114	114	115	117	119	120	121	122	121			
55	108	107	105	104	102	100	99.2	99.4	99.3	100	103	104	106	107	109	107			
60	93.1	92.4	90.5	88.7	86.3	85.0	83.6	83.7	83.6	84.7	87.2	88.9	91.2	92.2	92.8	91.5			
65	77.5	76.9	74.7	72.9	70.2	68.8	67.2	67.3	67.0	68.2	71.0	72.8	75.3	76.0	77.5	72.9			
70	61.4	60.7	58.5	56.6	53.8	52.1	50.5	50.4	50.0	51.4	54.2	56.2	58.9	60.0	61.4	58.0			
75	44.9	44.2	42.2	40.3	37.5	35.8	34.1	33.8	33.4	34.8	37.7	39.7	42.1	43.5	42.9	42.2			
80	28.8	28.3	26.7	25.2	22.5	21.1	19.4	18.9	18.3	19.8	22.5	24.2	26.6	27.8	27.1	27.6			
85	14.3	14.0	13.1	12.7	10.6	9.77	8.46	7.76	6.93	8.16	10.4	11.7	12.1	12.6	13.9	14.3			
90	3.50	4.12	4.55	4.64	0.37	3.32	3.00	2.39	1.37	2.04	3.46	4.03	0.37	5.14	5.17	4.32			
95	0.87	1.10	1.16	0.57	0.34	0.35	1.06	1.23	0.56	0.81	1.00	0.43	0.35	0.73	0.72	1.25			
100	0.42	0.44	0.43	0.51	0.43	0.41	0.49	0.64	0.50	0.48	0.46	0.55	0.45	0.45	0.47	0.57			
105	0.44	0.46	0.51	0.65	0.52	0.51	0.52	0.61	0.58	0.58	0.69	0.75	0.55	0.55	0.54	0.60			
110	0.53	0.56	0.72	0.79	0.63	0.62	0.61	0.25	0.69	0.68	0.80	1.00	0.66	0.66	0.65	0.69			
115	0.00	0.00	0.00	0.00	0.00	0.00	0.00	0.00	0.00	0.00	0.00	0.00	0.00	0.00	0.00	0.00			
120	0.00	0.00	0.00	0.00	0.00	0.00	0.00	0.00	0.00	0.00	0.00	0.00	0.00	0.00	0.00	0.00			
125	0.00	0.00	0.00	0.00	0.00	0.00	0.00	0.00	0.00	0.00	0.00	0.00	0.00	0.00	0.00	0.00			
130	0.00	0.00	0.00	0.00	0.00	0.00	0.00	0.00	0.00	0.00	0.00	0.00	0.00	0.00	0.00	0.00			
135	0.00	0.00	0.00	0.00	0.00	0.00	0.00	0.00	0.00	0.00	0.00	0.00	0.00	0.00	0.00	0.00			
140	0.00	0.00	0.00	0.00	0.00	0.00	0.00	0.00	0.00	0.00	0.00	0.00	0.00	0.00	0.00	0.00			
145	0.00	0.00	0.00	0.00	0.00	0.00	0.00	0.00	0.00	0.00	0.00	0.00	0.00	0.00	0.00	0.00			
150	0.00	0.00	0.00	0.00	0.00	0.00	0.00	0.00	0.00	0.00	0.00	0.00	0.00	0.00	0.00	0.00			
155	0.00	0.00	0.00	0.00	0.00	0.00	0.00	0.00	0.00	0.00	0.00	0.00	0.00	0.00	0.00	0.00			
160	0.00	0.00	0.00	0.00	0.00	0.00	0.00	0.00	0.00	0.00	0.00	0.00	0.00	0.00	0.00	0.00			
165	0.00	0.00	0.00	0.00	0.00	0.00	0.00	0.00	0.00	0.00	0.00	0.00	0.00	0.00	0.00	0.00			
170	0.00	0.00	0.00	0.00	0.00	0.00	0.00	0.00	0.00	0.00	0.00	0.00	0.00	0.00	0.00	0.00			
175	0.00	0.00	0.00	0.00	0.00	0.00	0.00	0.00	0.00	0.00	0.00	0.00	0.00	0.00	0.00	0.00			
180	0.00	0.00	0.00	0.00	0.00	0.00	0.00	0.00	0.00	0.00	0.00	0.00	0.00	0.00	0.00	0.00			

C Range: 0 - 360DEG
C Interval: 22.5DEG
Test Speed: HIGH
Temperature: 25DEG
Operators: Marçal Huguet
Test Date: March 2021

γ Range: 0 - 110DEG
γ Interval: 1.0DEG
Test System: EVERFINE GO-2000B_V1 SYSTEM V2.0.400
Humidity: 37%
Test Distance: 8.200m [K=1.0000]
Remarks: