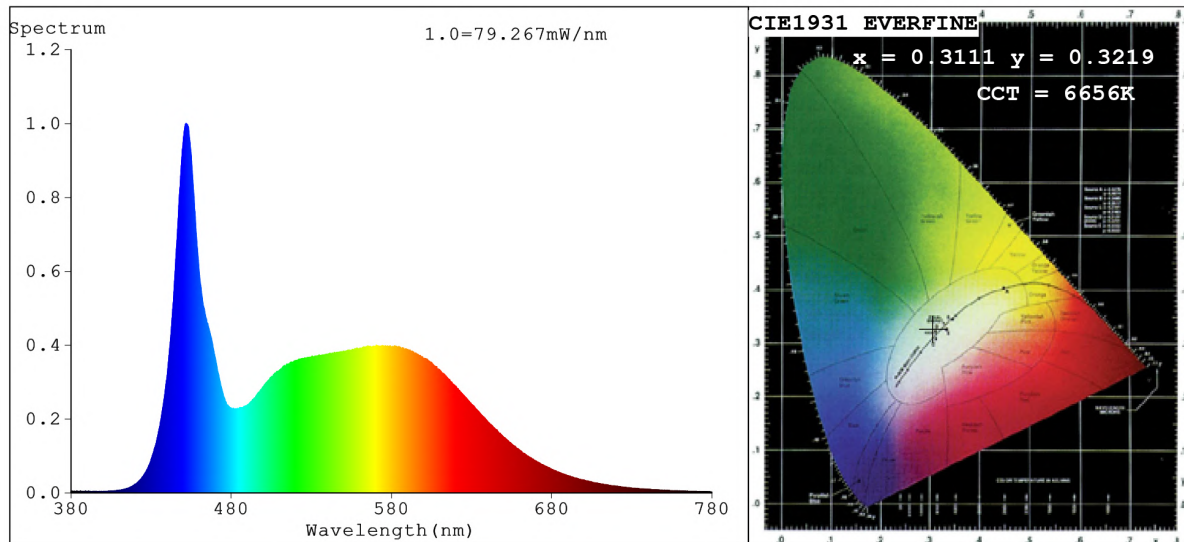


Spectrum Test Report



Color Parameters:

Chromaticity Coordinate: $x=0.3111$ $y=0.3219$ $u'=0.1994$ $v'=0.4642$
 CCT=6656K (Duv=0.0003) Dominant WL: $\lambda_d = 484.8\text{nm}$ Purity=8.4%
 Ratio: R=13.8% G=80.1% B=6.1%; Peak WL: $\lambda_p = 451.9\text{nm}$ FWHM=19.5nm
 Render Index: Ra=85.2 CRI=78.6 TM30: Rf=81 Rg=94
 R1 =84 R2 =91 R3 =93 R4 =84 R5 =85 R6 =85 R7 =88
 R8 =71 R9 =15 R10=77 R11=84 R12=59 R13=87 R14=97 R15=80

Photo Parameters:

Flux = 2059 lm Eff. : 133.35 lm/W $F_e = 6.744\text{ W}$ Scotopic: 4746.4 S/P: 2.3049

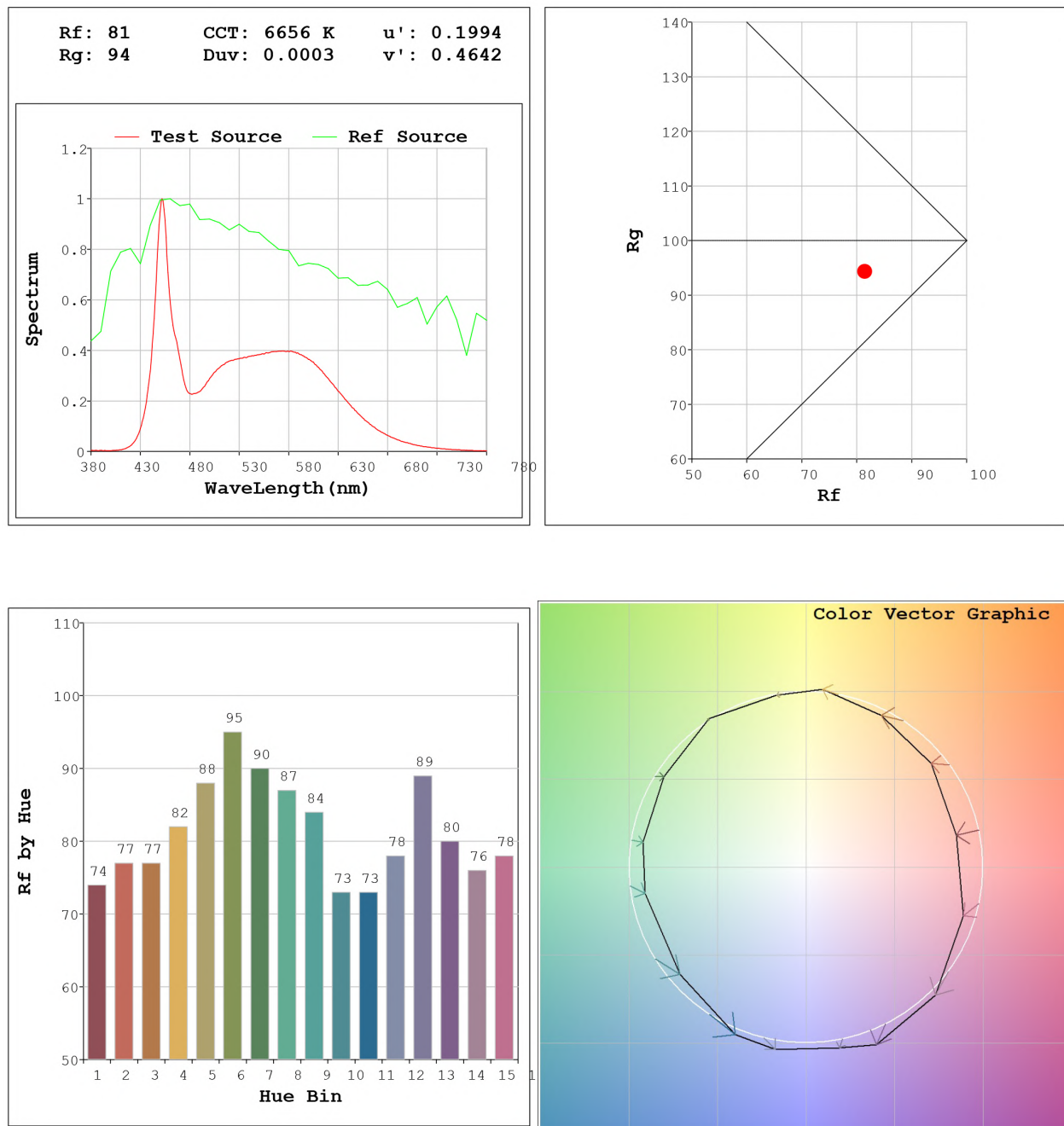
Electrical parameters:

V = 23.998 V I = 0.6435 A P = 15.44 W PF = 1.000

Status: Integral T = 266 ms $I_p = 33134$ (51%)

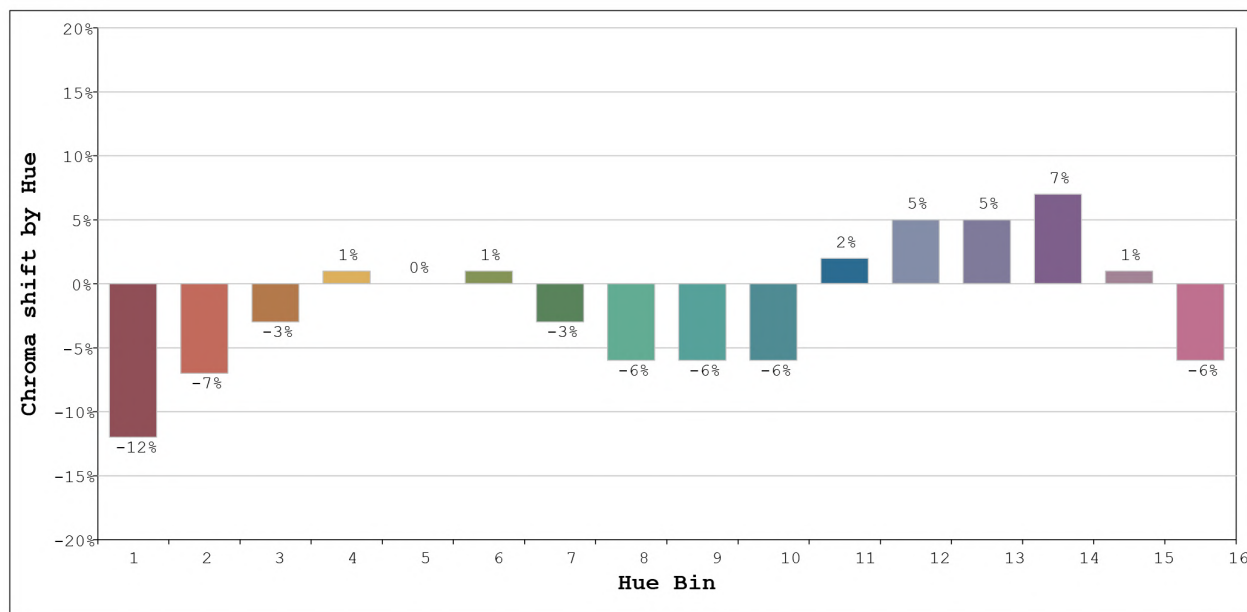
Model: Ecoled Élite 15 6500K
 Tester: Sergio Carneros
 Temperature: 21.5 Deg
 Manufacturer: Luz Negra S.L

Number: 31.011
 Date: 2023-09-12 09:27:05
 Humidity: 59%
 Remarks: 100cm de tira flexible



Model:Ecoled Élite 15 6500K
 Tester:Sergio Carneros
 Temperature:21.5Deg
 Manufacturer:Luz Negra S.L

Number: 31.011
 Date:2023-09-12 09:27:05
 Humidity:59%
 Remarks:100cm de tira flexible



			Graphic shift(%)	
Hue Bin	Hue Angle	Rf	Chroma	Hue
1	0.0° - 22.5°	74	-12	0
2	22.5° - 45.0°	77	-7	7
3	45.0° - 67.5°	77	-3	12
4	67.5° - 90.0°	82	1	9
5	90.0° - 112.5°	88	0	3
6	112.5° - 135.0°	95	1	0
7	135.0° - 157.5°	90	-3	-2
8	157.5° - 180.0°	87	-6	0
9	180.0° - 202.5°	84	-6	6
10	202.5° - 225.0°	73	-6	15
11	225.0° - 247.5°	73	2	18
12	247.5° - 270.0°	78	5	8
13	270.0° - 292.5°	89	5	-2
14	292.5° - 315.0°	80	7	-10
15	315.0° - 337.5°	76	1	-14
16	337.5° - 360.0°	78	-6	-8

Model:Ecoled Élite 15 6500K
 Tester:Sergio Carneros
 Temperature:21.5Deg
 Manufacturer:Luz Negra S.L

Number: 31.011
 Date:2023-09-12 09:27:05
 Humidity:59%
 Remarks:100cm de tira flexible