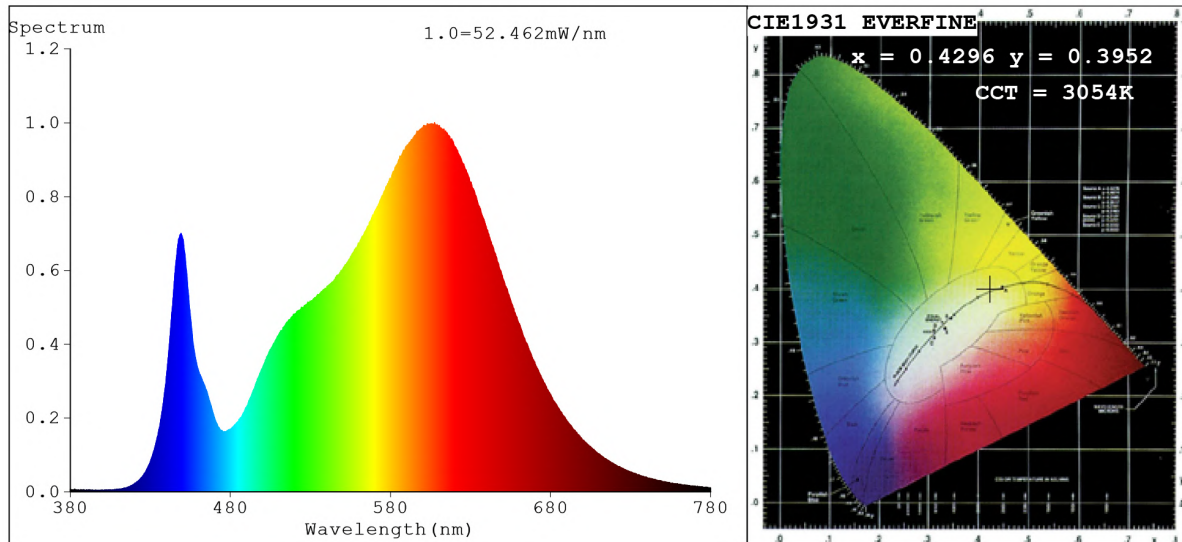


## Spectrum Test Report



### Color Parameters:

Chromaticity Coordinate:  $x=0.4296$   $y=0.3952$  /  $u'=0.2496$   $v'=0.5167$   
 CCT=3054K (Duv=-0.0026) Dominant WL:  $L_d = 583.6nm$  Purity=47.5%  
 Ratio: R=23.0% G=74.4% B=2.6%; Peak WL:  $L_p=607.5nm$  FWHM=131.7nm  
 Render Index:  $R_a=84.3$  CRI=79.4 TM30:  $R_f=82$   $R_g=98$   
 R1 =83 R2 =92 R3 =96 R4 =83 R5 =84 R6 =90 R7 =83  
 R8 =62 R9 =14 R10=81 R11=84 R12=75 R13=85 R14=99 R15=76

### Photo Parameters:

Flux = 2561 lm Eff. : 130.84 lm/W  $F_e = 7.847$  W Scotopic: 3535.5 S/P: 1.3807

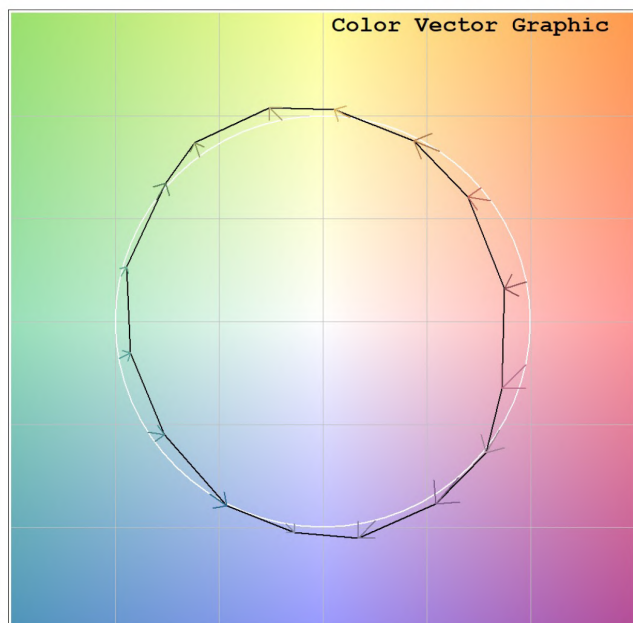
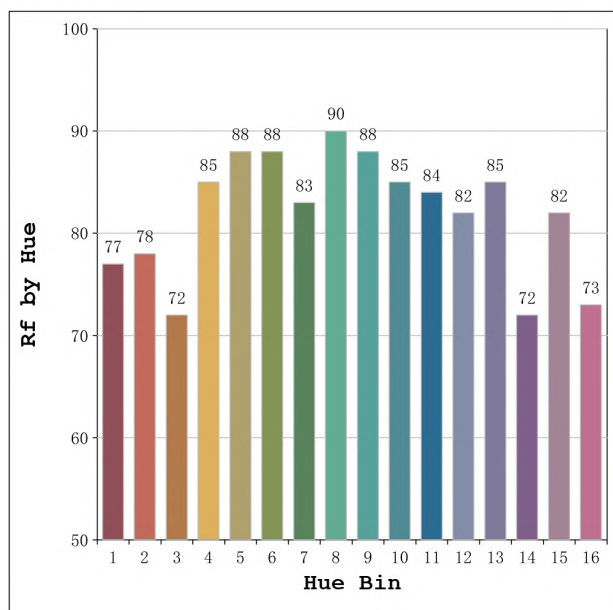
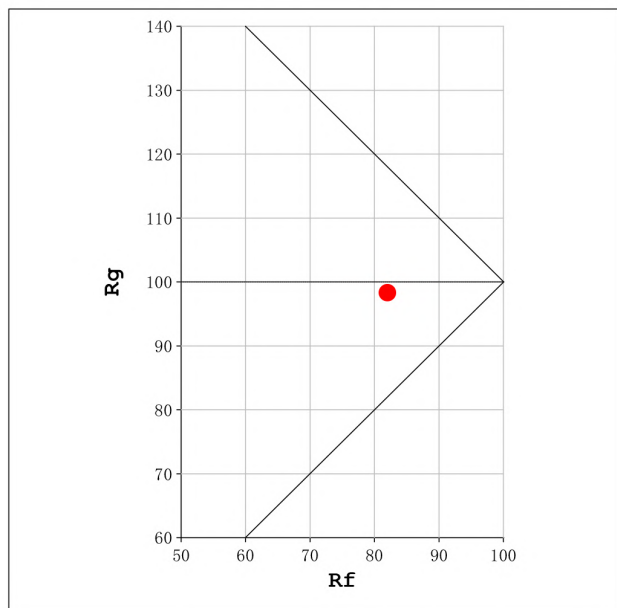
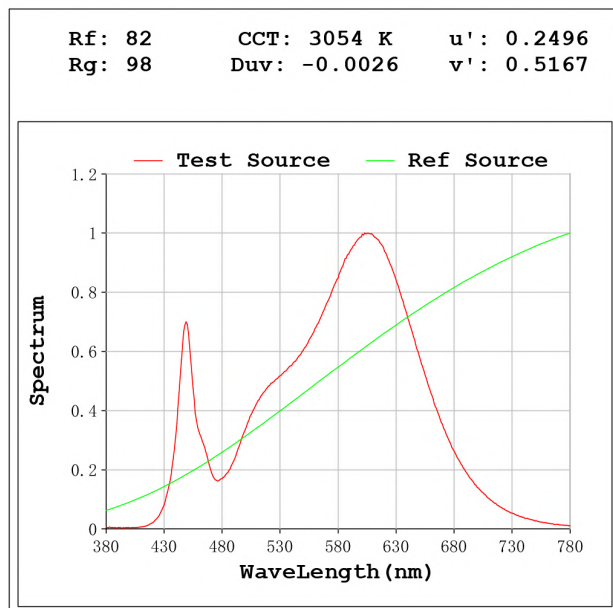
### Electrical parameters:

V = 23.998 V I = 0.8155 A P = 19.57 W PF = 1.000

Status: Integral T = 309 ms  $I_p = 33365$  (51%)

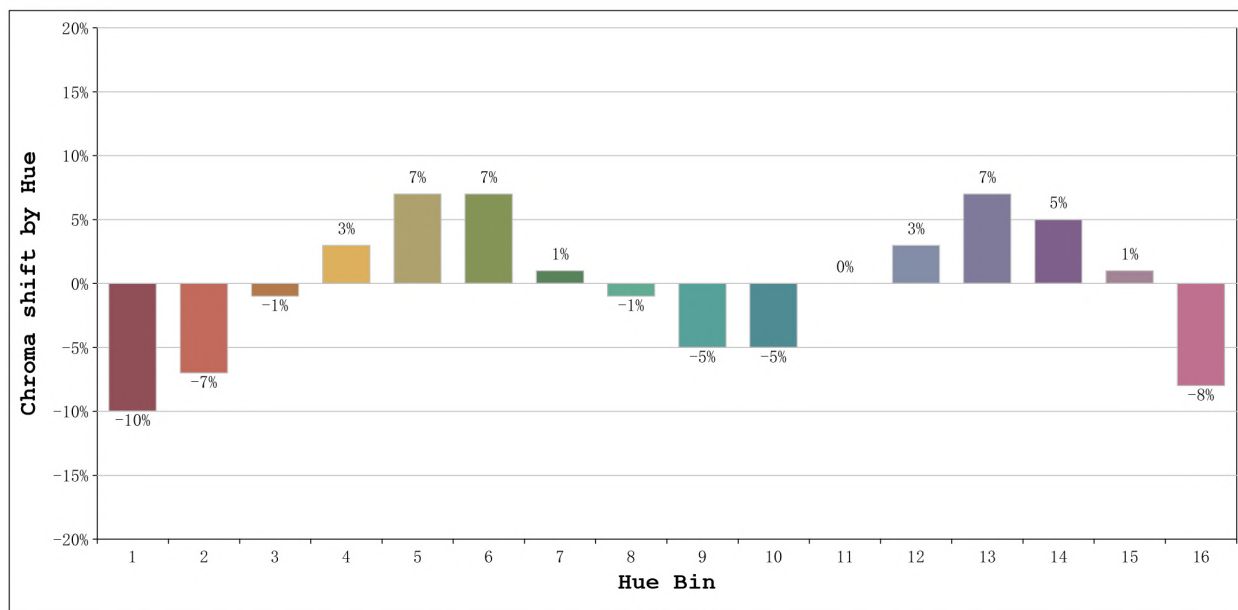
Model: Ecoled Élite 20 3000K  
 Tester: Sergio Carneros  
 Temperature: 25Deg  
 Manufacturer: Luz Negra

Number: 31.019  
 Date: 2023-01-19 08:36:02  
 Humidity: 57%  
 Remarks: 100cm de tira flexible



Model:Ecoled Élite 20 3000K  
 Tester:Sergio Carneros  
 Temperature:25Deg  
 Manufacturer:Luz Negra

Number: 31.019  
 Date:2023-01-19 08:36:02  
 Humidity:57%  
 Remarks:100cm de tira flexible



			Graphic shift(%)	
Hue Bin	Hue Angle	Rf	Chroma	Hue
1	0.0° - 22.5°	77	-10	0
2	22.5° - 45.0°	78	-7	8
3	45.0° - 67.5°	72	-1	13
4	67.5° - 90.0°	85	3	8
5	90.0° - 112.5°	88	7	5
6	112.5° - 135.0°	88	7	-1
7	135.0° - 157.5°	83	1	-8
8	157.5° - 180.0°	90	-1	-4
9	180.0° - 202.5°	88	-5	-1
10	202.5° - 225.0°	85	-5	5
11	225.0° - 247.5°	84	0	10
12	247.5° - 270.0°	82	3	5
13	270.0° - 292.5°	85	7	-9
14	292.5° - 315.0°	72	5	-15
15	315.0° - 337.5°	82	1	-11
16	337.5° - 360.0°	73	-8	-12

Model:Ecoled Élite 20 3000K  
 Tester:Sergio Carneros  
 Temperature:25Deg  
 Manufacturer:Luz Negra

Number: 31.019  
 Date:2023-01-19 08:36:02  
 Humidity:57%  
 Remarks:100cm de tira flexible