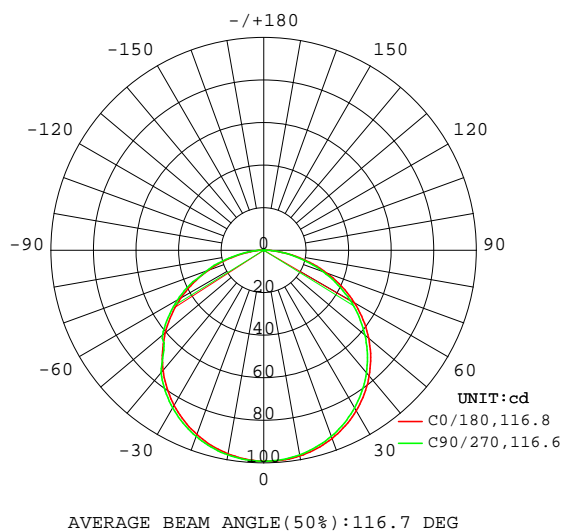


LUMINAIRE PHOTOMETRIC TEST REPORT

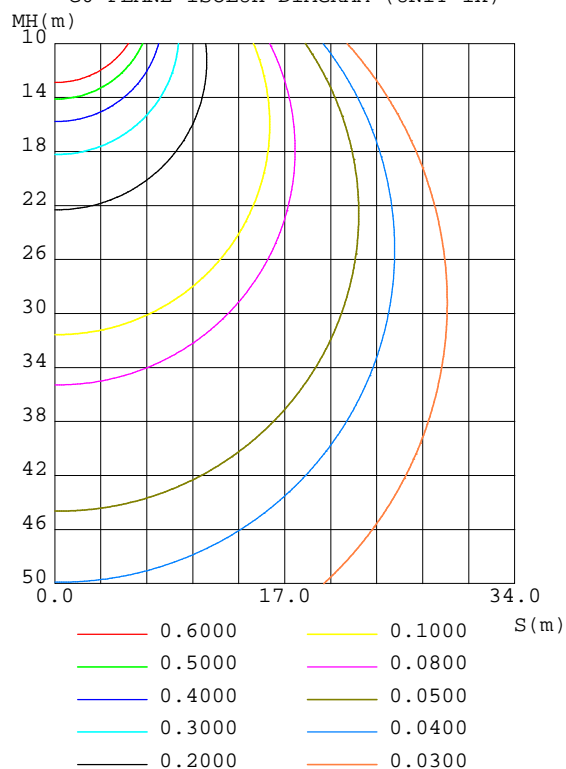
NAME: Palma 4200k	TYPE:	WEIGHT:1
SPEC.:Multi tirantes	DIM.: 3x10x500	SERIAL No.:
MFR.: Luz Negra s.l.	SUR.:22	Shielding Angle:

DATA OF LAMP		PHOTOMETRIC DATA Eff: 110.88 lm/W			
MODEL	30.005	I _{max} (cd)	99.23	S/MH(C0/180)	1.26
NOMINAL POWER(W)	4,8w/m	LOR(%)	100.0	S/MH(C90/270)	1.28
RATED VOLTAGE(V)	24,4	TOTAL FLUX(lm)	298.69	η UP,DN(C0-180)	0.2,50.3
NOMINAL FLUX(lm)	298.692	CIE CLASS	DIRECT	η UP,DN(C180-360)	0.2,49.3
LAMPS INSIDE	1	η up(%)	0.4	CIBSE SHR NOM	1.25
TEST VOLTAGE(V)	24,4	η down(%)	99.6	CIBSE SHR MAX	1.35

LUMINOUS INTENSITY DISTRIBUTION DIAGRAM



C0 PLANE ISOLUX DIAGRAM (UNIT:lx)



C Range: 0 - 360DEG
C Interval: 22.5DEG
Test Speed: HIGH
Temperature:25DEG
Operators:Marçal Huguet
Test Date:March 2021

γ Range: 0 - 110DEG
γ Interval: 1.0DEG
Test System:EVERFINE GO-2000B_V1 SYSTEM V2.0.400
Humidity:37%
Test Distance:8.200m [K=1.0000]
Remarks:

ZONAL FLUX DIAGRAM

ZONAL FLUX DIAGRAM:

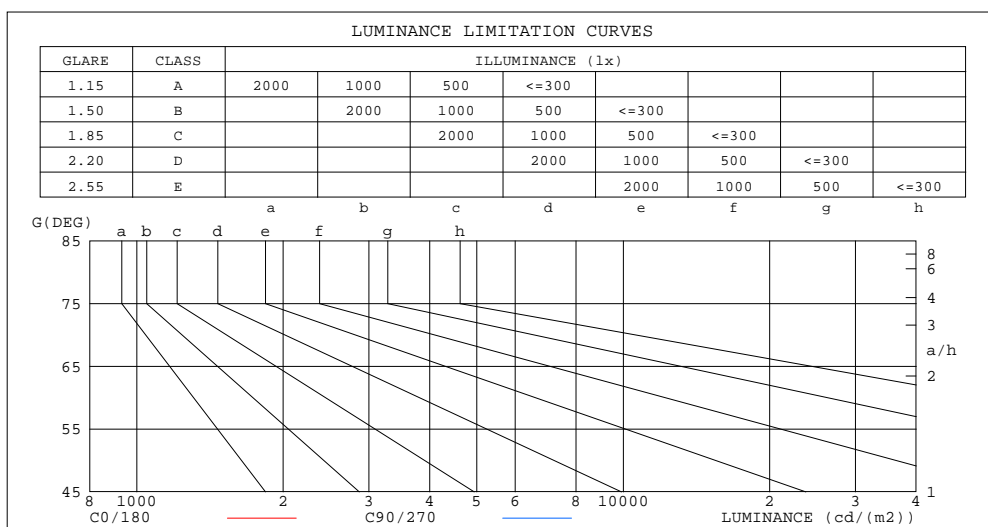
γ	C0	C45	C90	C135	C180	C225	C270	C315	γ	Φ zone	Φ total	%lum,lamp
10	98.16	98.03	97.65	97.29	97.15	97.30	97.68	98.05	0- 10	9.395	9.395	3.15,3.15
20	94.12	93.83	93.08	92.43	92.12	92.44	93.13	93.87	10- 20	27.04	36.44	12.2,12.2
30	87.10	86.64	85.54	84.66	84.25	84.67	85.61	86.70	20- 30	41.38	77.82	26.1,26.1
40	77.16	76.57	75.14	74.13	73.64	74.12	75.15	76.66	30- 40	50.53	128.3	43,43
50	64.42	63.76	62.15	61.05	60.47	60.99	62.19	63.85	40- 50	53.29	181.6	60.8,60.8
60	49.10	48.47	46.86	45.68	45.01	45.56	46.88	48.55	50- 60	49.10	230.7	77.3,77.3
70	31.67	31.20	29.80	28.57	27.79	28.33	28.52	31.23	60- 70	38.07	268.8	90,90
80	13.66	13.71	12.97	11.63	10.71	11.27	12.25	13.66	70- 80	22.11	290.9	97.4,97.4
90	1.290	1.847	0.1721	1.367	0.5550	1.512	0.5958	1.902	80- 90	6.644	297.6	99.6,99.6
100	0.1958	0.2131	0.1957	0.1871	0.2566	0.2394	0.2219	0.2089	90-100	0.6812	298.2	99.8,99.8
110	0.2871	0.3524	0.2915	0.3003	0.3437	0.1534	0.3437	0.3090	100-110	0.4266	298.7	100,100
120	0	0	0	0	0	0	0	0	110-120	0.0228	298.7	100,100
130	0	0	0	0	0	0	0	0	120-130	0	298.7	100,100
140	0	0	0	0	0	0	0	0	130-140	0	298.7	100,100
150	0	0	0	0	0	0	0	0	140-150	0	298.7	100,100
160	0	0	0	0	0	0	0	0	150-160	0	298.7	100,100
170	0	0	0	0	0	0	0	0	160-170	0	298.7	100,100
180	0	0	0	0	0	0	0	0	170-180	0	298.7	100,100
DEG	LUMINOUS INTENSITY:cd									UNIT:lm		

C Range: 0 - 360DEG
 C Interval: 22.5DEG
 Test Speed: HIGH
 Temperature:25DEG
 Operators:Marçal Huguet
 Test Date:March 2021

γ Range: 0 - 110DEG
 γ Interval: 1.0DEG
 Test System:EVERFINE GO-2000B_V1 SYSTEM V2.0.400
 Humidity:37%
 Test Distance:8.200m [K=1.0000]
 Remarks:

LUMINANCE LIMITATION CURVES

NAME: Palma 4200k	TYPE:	WEIGHT:1
SPEC.:Multi tirantes	DIM.: 3x10x500	SERIAL No.:
MFR.: Luz Negra s.l.	SUR.:22	Shielding Angle:



LUMINANCE cd/(m2)		
G(DEG)	C0/180	C90/270
85	347	333
80	395	375
75	437	409
70	465	437
65	482	457
60	493	471
55	499	480
50	503	485
45	505	490

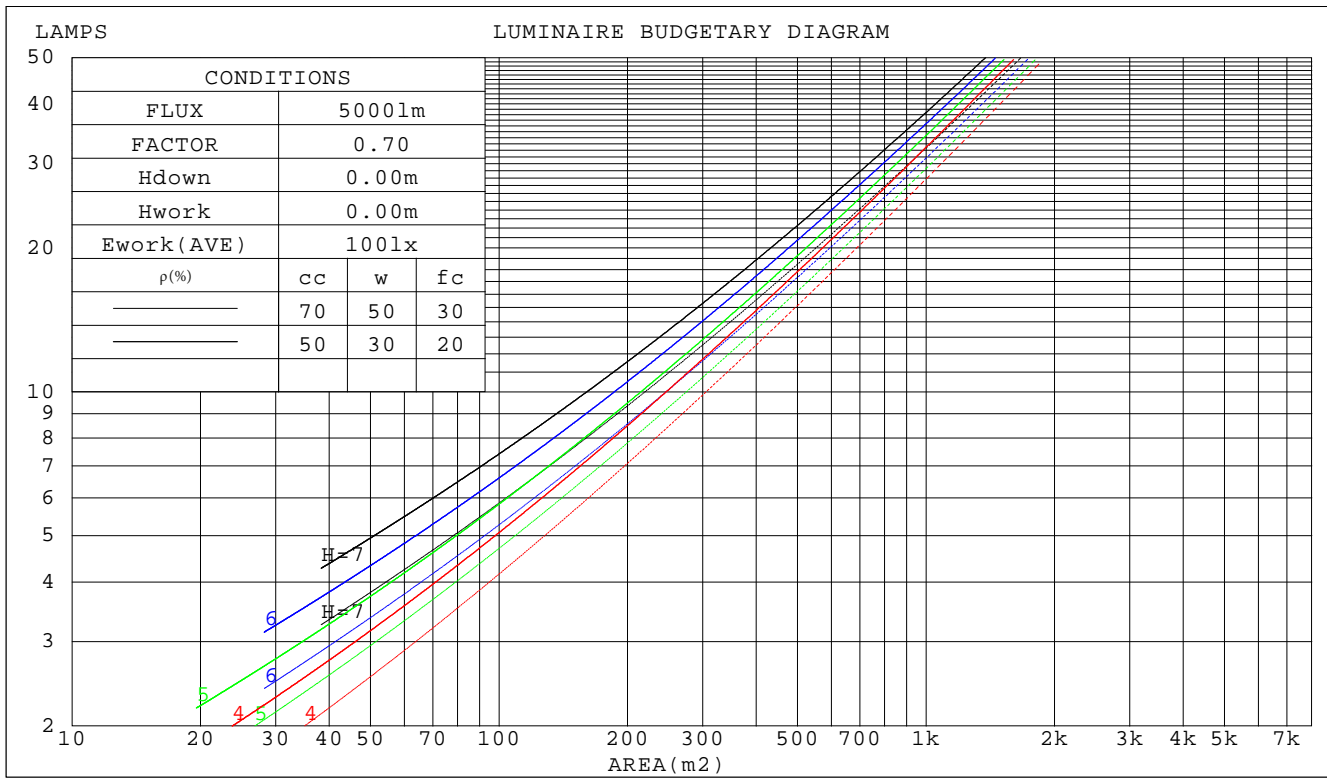
C Range: 0 - 360DEG
 C Interval: 22.5DEG
 Test Speed: HIGH
 Temperature: 25DEG
 Operators: Marçal Huguet
 Test Date: March 2021

γ Range: 0 - 110DEG
 γ Interval: 1.0DEG
 Test System: EVERFINE GO-2000B_V1 SYSTEM V2.0.400
 Humidity: 37%
 Test Distance: 8.200m [K=1.0000]
 Remarks:

CU AND LUMINAIRE BUDGETARY ESTIMATE DIAGRAM

NAME: Palma 4200k	TYPE:	WEIGHT:1
SPEC.:Multi tirantes	DIM.: 3x10x500	SERIAL No.:
MFR.: Luz Negra s.l.	SUR.:22	Shielding Angle:

ρ_{cc}	80%			70%			50%			30%			10%			0
ρ_w	50%	30%	10%	50%	30%	10%	50%	30%	10%	50%	30%	10%	50%	30%	10%	0
ρ_{fc}	20%			20%			20%			20%			20%			0
RCR	RCR:Room Cavity Ratio															
	Coefficients of Utilization(CU)															
0.0	1.19	1.19	1.19	1.16	1.16	1.16	1.11	1.11	1.11	1.06	1.06	1.06	1.02	1.02	1.02	.00
1.0	1.03	.99	.95	1.01	.97	.93	.97	.93	.90	.93	.90	.88	.89	.87	.85	.83
2.0	.90	.83	.77	.88	.81	.76	.84	.79	.74	.81	.76	.72	.78	.74	.71	.68
3.0	.79	.70	.64	.77	.69	.63	.74	.67	.62	.71	.65	.61	.68	.64	.60	.57
4.0	.69	.60	.54	.68	.60	.53	.65	.58	.52	.63	.57	.52	.61	.55	.51	.49
5.0	.62	.53	.46	.61	.52	.46	.59	.51	.45	.57	.50	.45	.55	.49	.44	.42
6.0	.56	.47	.40	.55	.46	.40	.53	.45	.39	.51	.44	.39	.49	.43	.39	.37
7.0	.50	.41	.35	.50	.41	.35	.48	.40	.35	.46	.40	.35	.45	.39	.34	.32
8.0	.46	.37	.31	.45	.37	.31	.44	.36	.31	.43	.36	.31	.41	.35	.31	.29
9.0	.42	.34	.28	.41	.34	.28	.40	.33	.28	.39	.32	.28	.38	.32	.28	.26
10.0	.39	.31	.25	.38	.31	.25	.37	.30	.25	.36	.30	.25	.35	.29	.25	.23



C Range: 0 - 360DEG
C Interval: 22.5DEG
Test Speed: HIGH
Temperature: 25DEG
Operators: Marçal Huguet
Test Date: March 2021

γ Range: 0 - 110DEG
 γ Interval: 1.0DEG
 Test System:EVERFINE GO-2000B_V1 SYSTEM V2.0.400
 Humidity:37%
 Test Distance:8.200m [K=1.0000]
 Remarks:

WEC AND CCEC

NAME: Palma 4200k	TYPE:	WEIGHT:1
SPEC.:Multi tirantes	DIM.: 3x10x500	SERIAL No.:
MFR.: Luz Negra s.l.	SUR.:22	Shielding Angle:

ρ_{CC}	80%			70%			50%			30%			10%			0
ρ_W	50%	30%	10%	50%	30%	10%	50%	30%	10%	50%	30%	10%	50%	30%	10%	0
ρ_{fC}	20%			20%			20%			20%			20%			0
RCR	RCR:Room Cavity Ratio Wall Exitance Coefficients(WEC)															
0.0																
1.0	.317	.181	.057	.310	.177	.056	.297	.170	.054	.284	.164	.053	.273	.158	.051	
2.0	.297	.163	.050	.291	.160	.049	.279	.155	.048	.268	.150	.047	.258	.146	.046	
3.0	.274	.146	.044	.269	.144	.043	.258	.140	.043	.248	.136	.042	.239	.132	.041	
4.0	.253	.131	.039	.248	.130	.038	.238	.126	.038	.230	.123	.037	.221	.120	.037	
5.0	.233	.119	.034	.229	.117	.034	.220	.115	.034	.213	.112	.033	.205	.110	.033	
6.0	.216	.108	.031	.212	.107	.031	.205	.105	.031	.198	.103	.030	.191	.101	.030	
7.0	.201	.099	.028	.197	.098	.028	.191	.096	.028	.184	.095	.028	.179	.093	.027	
8.0	.187	.092	.026	.184	.091	.026	.178	.089	.025	.173	.087	.025	.167	.086	.025	
9.0	.175	.085	.024	.173	.084	.024	.167	.083	.023	.162	.081	.023	.157	.080	.023	
10.0	.165	.079	.022	.162	.078	.022	.157	.077	.022	.153	.076	.022	.149	.075	.021	

ρ_{CC}	80%			70%			50%			30%			10%			0
ρ_W	50%	30%	10%	50%	30%	10%	50%	30%	10%	50%	30%	10%	50%	30%	10%	0
ρ_{fC}	20%			20%			20%			20%			20%			0
RCR	RCR:Room Cavity Ratio Ceiling Cavity Exitance Coefficients(CCEC)															
0.0	.193	.193	.193	.165	.165	.165	.113	.113	.113	.065	.065	.065	.021	.021	.021	
1.0	.184	.159	.137	.157	.136	.118	.108	.094	.081	.062	.054	.047	.020	.017	.015	
2.0	.176	.135	.100	.151	.116	.087	.103	.080	.060	.060	.047	.035	.019	.015	.012	
3.0	.168	.117	.077	.144	.101	.066	.099	.070	.047	.057	.041	.027	.018	.013	.009	
4.0	.161	.104	.061	.138	.090	.053	.095	.063	.037	.055	.037	.022	.018	.012	.007	
5.0	.153	.094	.050	.132	.081	.043	.091	.057	.031	.053	.033	.018	.017	.011	.006	
6.0	.146	.085	.042	.126	.074	.036	.087	.052	.026	.050	.030	.015	.016	.010	.005	
7.0	.139	.078	.036	.120	.068	.031	.083	.048	.022	.048	.028	.013	.016	.009	.004	
8.0	.133	.073	.031	.114	.063	.027	.079	.044	.019	.046	.026	.012	.015	.009	.004	
9.0	.126	.068	.028	.109	.059	.024	.076	.041	.017	.044	.024	.010	.014	.008	.003	
10.0	.121	.063	.025	.104	.055	.022	.072	.039	.016	.042	.023	.009	.014	.008	.003	

C Range: 0 - 360DEG
 C Interval: 22.5DEG
 Test Speed: HIGH
 Temperature:25DEG
 Operators:Marçal Huguet
 Test Date:March 2021

γ Range: 0 - 110DEG
 γ Interval: 1.0DEG
 Test System:EVERFINE GO-2000B_V1 SYSTEM V2.0.400
 Humidity:37%
 Test Distance:8.200m [K=1.0000]
 Remarks:

UGR(Unified Glare Rating) Table

NAME: Palma 4200k	TYPE:	WEIGHT:1
SPEC.:Multi tirantes	DIM.: 3x10x500	SERIAL No.:
MFR.: Luz Negra s.l.	SUR.:22	Shielding Angle:

ceiling/cavity	0.7	0.7	0.5	0.5	0.3	0.7	0.7	0.5	0.5	0.3
walls	0.5	0.3	0.5	0.3	0.3	0.5	0.3	0.5	0.3	0.3
working plane	0.2	0.2	0.2	0.2	0.2	0.2	0.2	0.2	0.2	0.2
Room dimensions	Viewed crosswise					Viewed endwise				
x = 2H y = 2H	14.8	16.4	15.1	16.6	16.8	14.7	16.2	14.9	16.4	16.6
3H	16.5	17.9	16.8	18.2	18.4	16.3	17.7	16.6	17.9	18.2
4H	17.2	18.5	17.5	18.8	19.0	16.9	18.2	17.2	18.5	18.8
6H	17.6	18.9	18.0	19.2	19.5	17.4	18.6	17.7	18.9	19.2
8H	17.8	19.0	18.1	19.3	19.6	17.5	18.7	17.9	19.0	19.3
12H	17.9	19.1	18.2	19.4	19.7	17.6	18.8	18.0	19.1	19.4
4H 2H	15.5	16.8	15.8	17.1	17.4	15.3	16.7	15.7	17.0	17.2
3H	17.3	18.5	17.7	18.8	19.1	17.1	18.3	17.5	18.6	18.9
4H	18.1	19.2	18.5	19.5	19.9	17.9	19.0	18.3	19.3	19.6
6H	18.7	19.7	19.1	20.0	20.4	18.5	19.4	18.9	19.8	20.2
8H	18.9	19.8	19.3	20.2	20.6	18.7	19.6	19.1	20.0	20.4
12H	19.1	19.9	19.5	20.3	20.7	18.8	19.7	19.3	20.0	20.5
8H 4H	18.4	19.3	18.8	19.7	20.1	18.2	19.1	18.6	19.5	19.9
6H	19.2	19.9	19.6	20.3	20.7	18.9	19.7	19.4	20.1	20.5
8H	19.5	20.1	19.9	20.6	21.0	19.2	19.9	19.7	20.3	20.8
12H	19.7	20.3	20.2	20.7	21.2	19.5	20.1	20.0	20.5	21.0
12H 4H	18.4	19.2	18.8	19.6	20.0	18.2	19.0	18.6	19.4	19.8
6H	19.2	19.9	19.7	20.3	20.8	19.0	19.7	19.5	20.1	20.6
8H	19.6	20.1	20.0	20.6	21.1	19.4	19.9	19.8	20.4	20.9

Variations with the observer position at spacings:

S = 1.0H	+ 0.1 / - 0.2	+ 0.1 / - 0.2
1.5H	+ 0.2 / - 0.3	+ 0.2 / - 0.3
2.0H	+ 0.2 / - 0.3	+ 0.2 / - 0.4

CIE Pub.117, 298.7 lm Total Lamp Luminous Flux Correct ($8\log(F/F_0) = -4.2$)

C Range: 0 - 360DEG
C Interval: 22.5DEG
Test Speed: HIGH
Temperature:25DEG
Operators:Marçal Huguet
Test Date:March 2021

γ Range: 0 - 110DEG
 γ Interval: 1.0DEG
Test System:EVERFINE GO-2000B_V1 SYSTEM V2.0.400
Humidity:37%
Test Distance:8.200m [K=1.0000]
Remarks:

UTILIZATION FACTORS TABLE

NAME: Palma 4200k	TYPE:	WEIGHT:1
SPEC.:Multi tirantes	DIM.: 3x10x500	SERIAL No.:
MFR.: Luz Negra s.l.	SUR.:22	Shielding Angle:

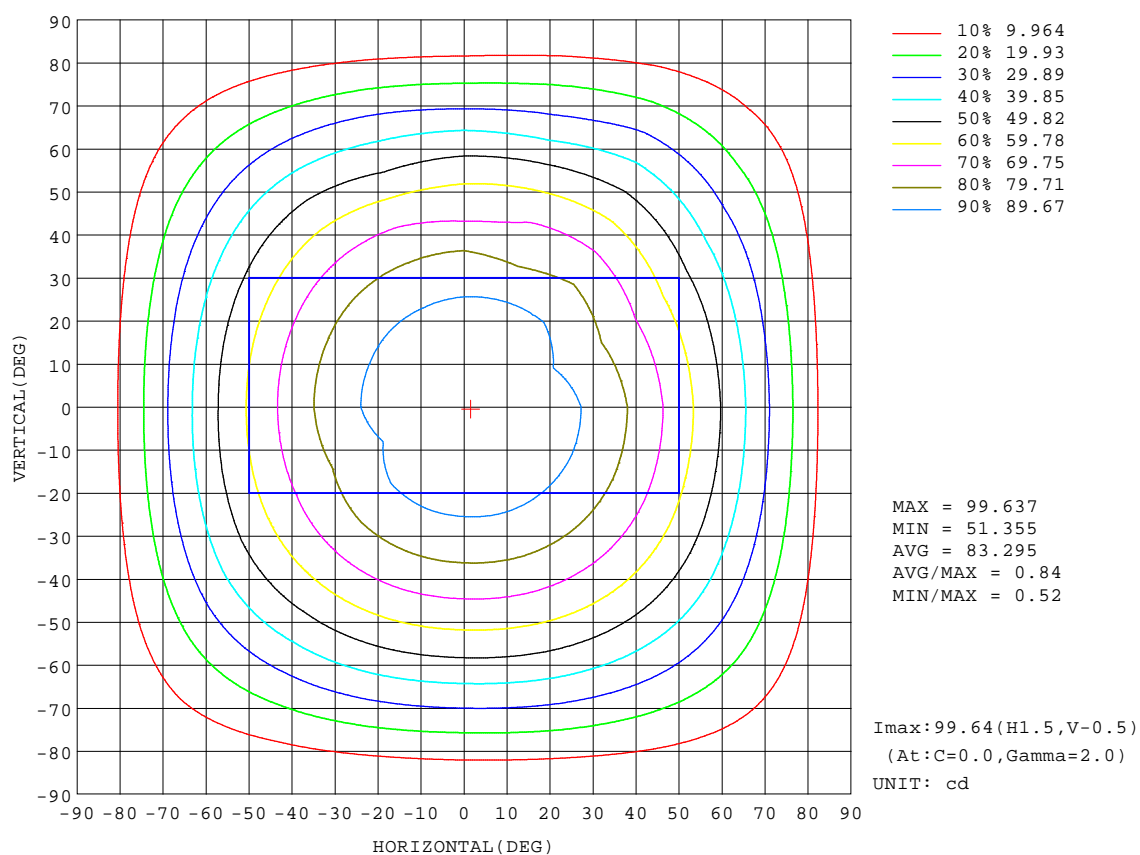
REFLECTANCE										
Ceiling	0.8	0.8	0.8	0.7	0.7	0.7	0.5	0.5	0.5	0
Walls	0.7	0.5	0.3	0.7	0.5	0.3	0.7	0.5	0.3	0
Working plane	0.2	0.2	0.2	0.2	0.2	0.2	0.2	0.2	0.2	0
ROOM INDEX	UTILIZATION FACTORS(PERCENT) $k(RI) \times RCR = 5$									
k = 0.60	57	45	38	56	45	38	55	44	37	31
0.80	67	55	47	66	54	47	64	54	47	40
1.00	75	64	56	74	63	56	72	65	55	48
1.25	82	71	64	81	71	64	78	69	63	55
1.50	87	77	70	86	76	69	82	74	68	61
2.00	94	85	79	92	84	78	89	82	76	68
2.50	98	90	84	96	89	83	92	86	81	73
3.00	102	95	89	99	93	88	95	90	86	77
4.00	106	100	95	103	98	94	99	95	91	82
5.00	108	103	99	106	101	97	101	98	94	85
ROOM INDEX	UF(total)									Direct
According to DIN EN 13032-2 2004			Suspended					SHRNOM = 1.25		

C Range: 0 - 360DEG
C Interval: 22.5DEG
Test Speed: HIGH
Temperature:25DEG
Operators:Marçal Huguet
Test Date:March 2021

γ Range: 0 - 110DEG
 γ Interval: 1.0DEG
Test System:EVERFINE GO-2000B_V1 SYSTEM V2.0.400
Humidity:37%
Test Distance:8.200m [K=1.0000]
Remarks:

ISOCANDELA DIAGRAM

NAME: Palma 4200k	TYPE:	WEIGHT:1
SPEC.:Multi tirantes	DIM.: 3x10x500	SERIAL No.:
MFR.: Luz Negra s.l.	SUR.:22	Shielding Angle:

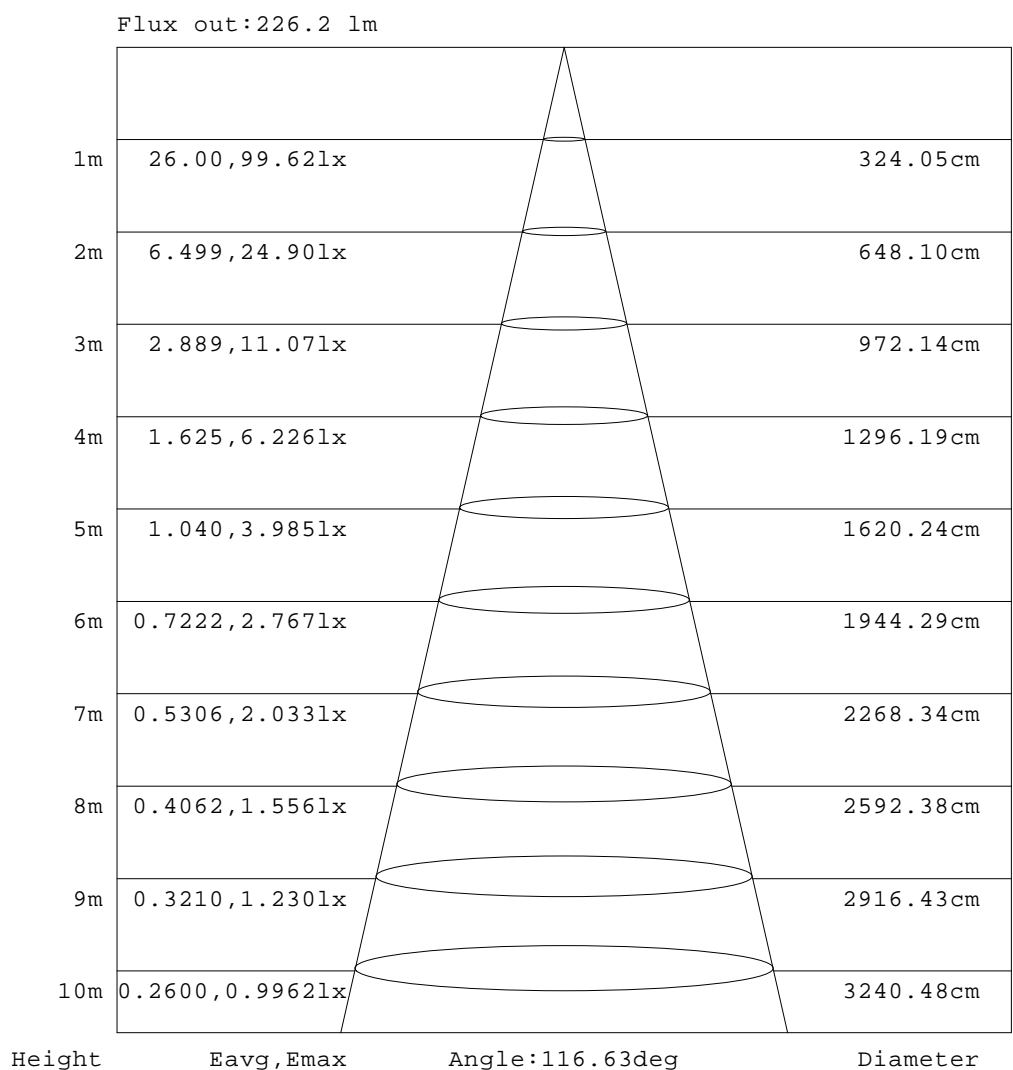


C Range: 0 - 360DEG
 C Interval: 22.5DEG
 Test Speed: HIGH
 Temperature: 25DEG
 Operators: Marçal Huguet
 Test Date: March 2021

γ Range: 0 - 110DEG
 γ Interval: 1.0DEG
 Test System: EVERFINE GO-2000B_V1 SYSTEM V2.0.400
 Humidity: 37%
 Test Distance: 8.200m [K=1.0000]
 Remarks:

AAI Figure

NAME: Palma 4200k	TYPE:	WEIGHT:1
SPEC.:Multi tirantes	DIM.: 3x10x500	SERIAL No.:
MFR.: Luz Negra s.l.	SUR.:22	Shielding Angle:



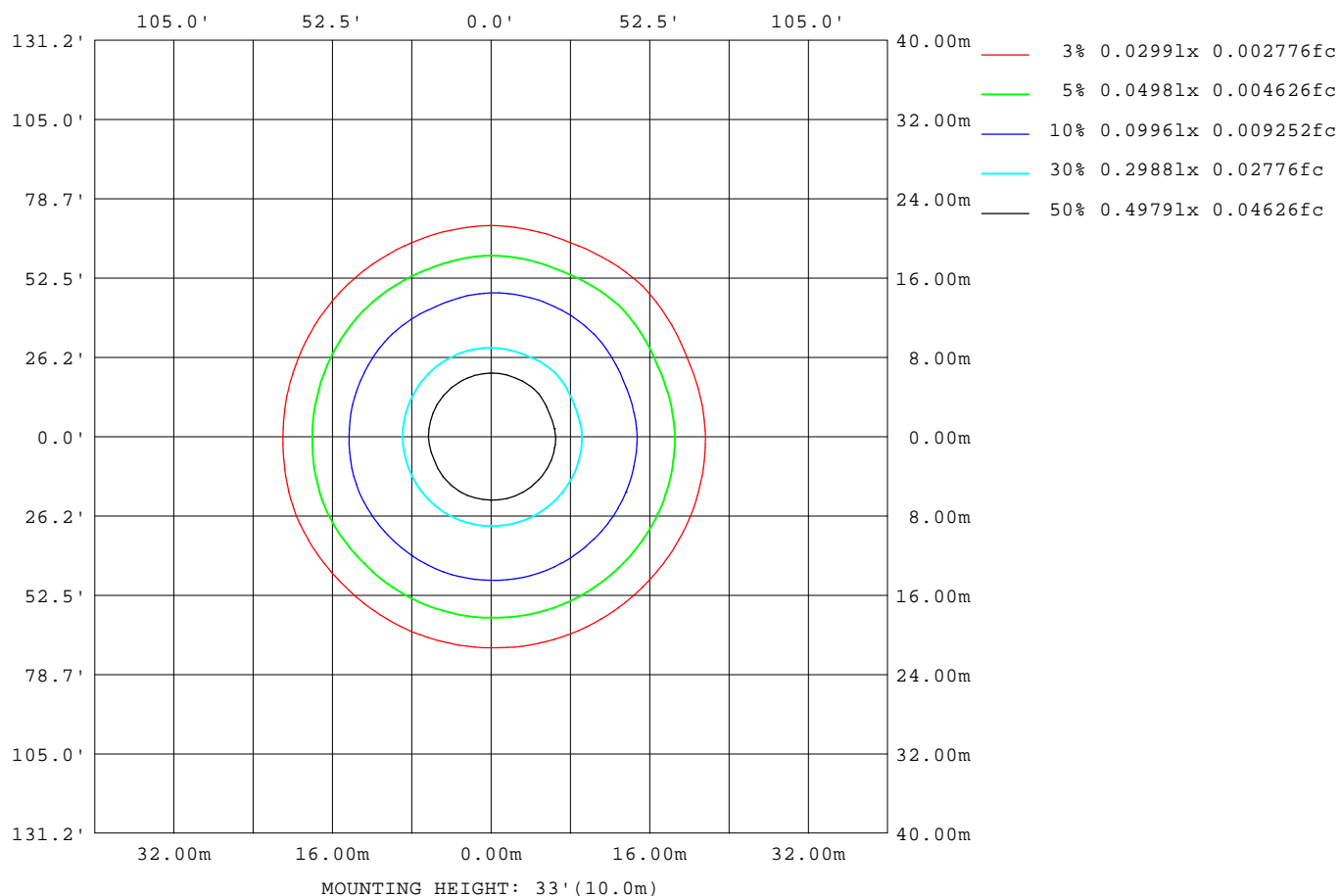
Note:The Curves indicate the illuminated area and the average illumination when the luminaire is at different distance.

C Range: 0 - 360DEG
C Interval: 22.5DEG
Test Speed: HIGH
Temperature:25DEG
Operators:Marçal Huguet
Test Date:March 2021

γ Range: 0 - 110DEG
γ Interval: 1.0DEG
Test System:EVERFINE GO-2000B_V1 SYSTEM V2.0.400
Humidity:37%
Test Distance:8.200m [K=1.0000]
Remarks:

ISOLUX DIAGRAM

NAME: Palma 4200k	TYPE:	WEIGHT:1
SPEC.:Multi tirantes	DIM.: 3x10x500	SERIAL No.:
MFR.: Luz Negra s.l.	SUR.:22	Shielding Angle:



C Range: 0 - 360DEG
C Interval: 22.5DEG
Test Speed: HIGH
Temperature: 25DEG
Operators: Marçal Huguet
Test Date: March 2021

γ Range: 0 - 110DEG
γ Interval: 1.0DEG
Test System: EVERFINE GO-2000B_V1 SYSTEM V2.0.400
Humidity: 37%
Test Distance: 8.200m [K=1.0000]
Remarks:

LED Avg.L Report

NAME: Palma 4200k	TYPE:	WEIGHT:1
SPEC.:Multi tirantes	DIM.: 3x10x500	SERIAL No.:
MFR.: Luz Negra s.l.	SUR.:22	Shielding Angle:

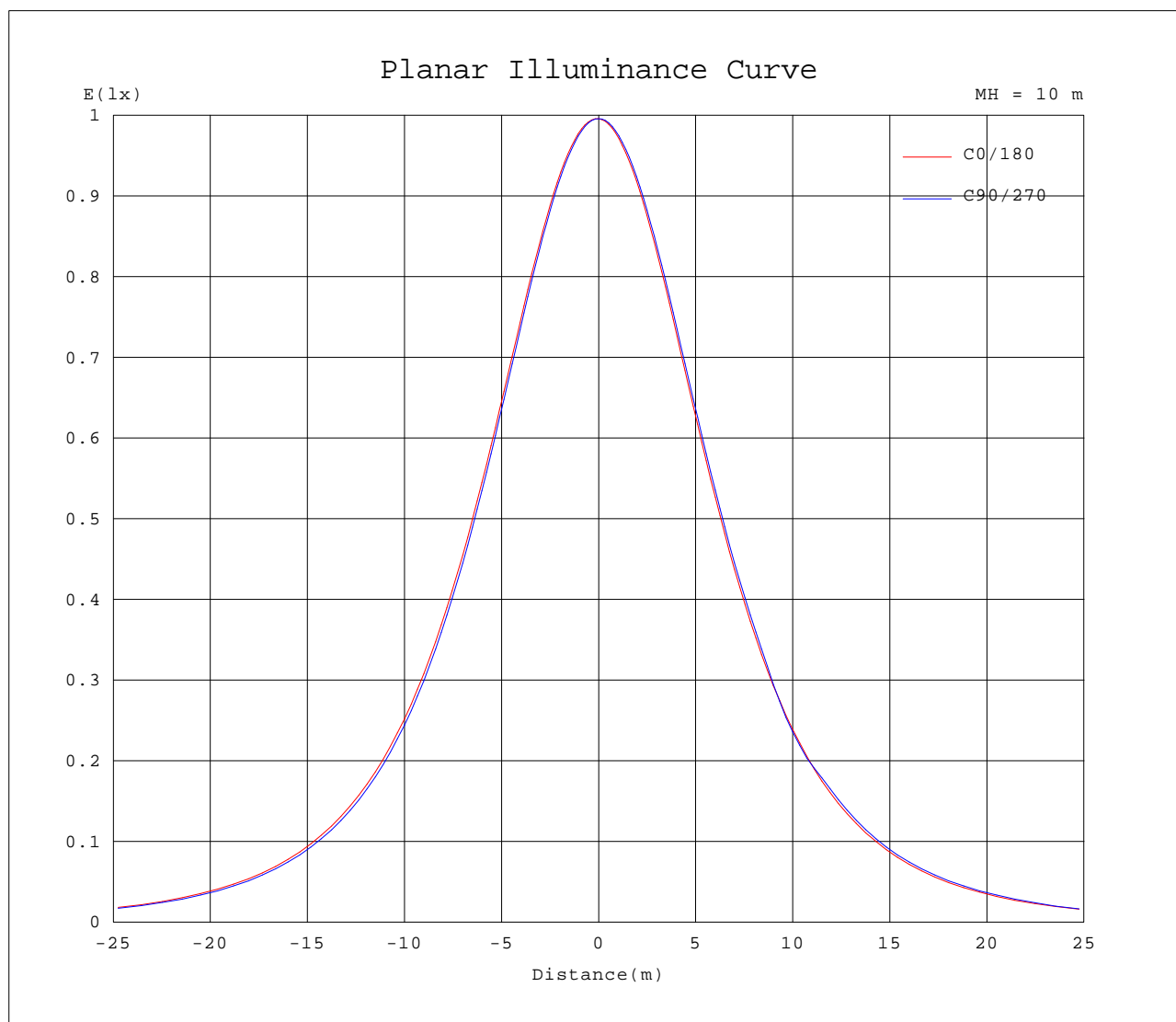
AvgL	cd/m2
L_0~180(65)av	456
L_0~180(75)av	401
L_0~180(85)av	289
L_90~270(65)av	455
L_90~270(75)av	399
L_90~270(85)av	322
L_45(65)av	457
L_45(75)av	404
L_45(85)av	327

Standard: GB/T 29293-2012

C Range: 0 - 360DEG
C Interval: 22.5DEG
Test Speed: HIGH
Temperature:25DEG
Operators:Marçal Huguet
Test Date:March 2021

γ Range: 0 - 110DEG
γ Interval: 1.0DEG
Test System:EVERFINE GO-2000B_V1 SYSTEM V2.0.400
Humidity:37%
Test Distance:8.200m [K=1.0000]
Remarks:

Planar Illuminance Curve



C Range: 0 - 360DEG
 C Interval: 22.5DEG
 Test Speed: HIGH
 Temperature: 25DEG
 Operators: Marçal Huguet
 Test Date: March 2021

γ Range: 0 - 110DEG
 γ Interval: 1.0DEG
 Test System: EVERFINE GO-2000B_V1 SYSTEM V2.0.400
 Humidity: 37%
 Test Distance: 8.200m [K=1.0000]
 Remarks:

LUMINOUS DISTRIBUTION INTENSITY DATA

NAME: Palma 4200k	TYPE:	WEIGHT:1
SPEC.:Multi tirantes	DIM.: 3x10x500	SERIAL No.:
MFR.: Luz Negra s.l.	SUR.:22	Shielding Angle:

Table--1

UNIT: cd

C(°)	0	22.5	45	67.5	90	112.5	135	157.5	180	202.5	225	247.5	270	292.5	315	337.5			
γ (°)	0	22.5	45	67.5	90	112.5	135	157.5	180	202.5	225	247.5	270	292.5	315	337.5			
0	99.2	99.2	99.2	99.2	99.2	99.2	99.2	99.2	99.2	99.2	99.2	99.2	99.2	99.2	99.2	99.2			
5	99.1	99.1	99.0	98.9	98.8	98.7	98.6	98.6	98.5	98.5	98.6	98.7	98.8	98.9	99.0	99.0			
10	98.2	98.2	98.0	97.9	97.7	97.5	97.3	97.3	97.1	97.1	97.3	97.4	97.7	97.8	98.0	98.0			
15	96.5	96.5	96.3	96.1	95.7	95.5	95.2	95.3	95.0	95.0	95.2	95.5	95.8	96.0	96.3	96.3			
20	94.1	94.1	93.8	93.6	93.1	92.8	92.4	92.5	92.1	92.1	92.4	92.7	93.1	93.5	93.9	93.8			
25	91.0	91.0	90.6	90.3	89.7	89.3	88.9	89.0	88.5	88.5	88.9	89.2	89.7	90.2	90.6	90.6			
30	87.1	87.1	86.6	86.2	85.5	85.1	84.7	85.0	84.3	84.3	84.7	85.0	85.6	86.1	86.7	86.7			
35	82.5	82.5	82.0	81.4	80.7	80.3	79.7	80.6	79.3	79.3	79.7	80.1	80.8	78.9	82.0	82.0			
40	77.2	77.1	76.6	76.0	75.1	74.7	74.1	75.7	73.6	73.6	74.1	74.5	75.1	73.0	76.7	76.6			
45	71.1	71.1	70.5	69.9	68.9	68.5	67.9	69.6	67.4	67.4	67.9	68.3	66.5	69.6	70.6	70.5			
50	64.4	64.4	63.8	63.1	62.2	61.7	61.0	62.8	60.5	60.5	61.0	61.2	62.2	62.9	63.9	63.7			
55	57.1	57.1	56.4	55.8	54.8	54.3	53.6	55.8	53.0	53.0	53.5	52.1	54.8	55.6	56.5	56.3			
60	49.1	49.2	48.5	47.9	46.9	46.4	45.7	47.9	45.0	45.0	45.6	44.8	46.9	45.9	48.6	48.3			
65	40.6	40.7	40.0	39.5	38.5	38.0	37.3	39.2	36.6	36.5	37.1	37.4	38.5	37.3	40.1	39.8			
70	31.7	31.8	31.2	30.7	29.8	29.3	28.6	29.8	27.8	27.8	28.3	28.8	28.5	28.2	31.2	30.9			
75	22.5	22.7	22.3	21.9	21.1	20.7	19.8	20.4	19.0	19.0	19.4	20.1	20.2	20.9	22.2	21.8			
80	13.7	13.9	13.7	13.5	13.0	12.5	11.6	11.9	10.7	10.8	11.3	12.0	12.2	13.2	13.7	13.1			
85	6.03	6.36	6.54	6.42	5.78	5.66	5.04	5.80	4.03	4.21	4.79	5.45	5.46	6.44	6.41	5.74			
90	1.29	1.58	1.85	1.84	0.17	1.65	1.37	2.94	0.55	0.93	1.51	1.94	0.60	2.11	1.90	1.38			
95	0.26	0.37	0.41	0.18	0.16	0.20	0.38	2.67	0.29	0.43	0.59	0.19	0.17	0.29	0.47	0.43			
100	0.20	0.19	0.21	0.25	0.20	0.24	0.19	2.39	0.26	0.27	0.24	0.29	0.22	0.33	0.21	0.24			
105	0.24	0.24	0.26	0.34	0.25	0.29	0.24	2.21	0.28	0.31	0.30	0.39	0.28	0.36	0.26	0.29			
110	0.29	0.29	0.35	0.39	0.29	0.33	0.30	1.96	0.34	0.37	0.15	0.53	0.34	0.40	0.31	0.33			
115	0.00	0.00	0.00	0.00	0.00	0.00	0.00	0.00	0.00	0.00	0.00	0.00	0.00	0.00	0.00	0.00			
120	0.00	0.00	0.00	0.00	0.00	0.00	0.00	0.00	0.00	0.00	0.00	0.00	0.00	0.00	0.00	0.00			
125	0.00	0.00	0.00	0.00	0.00	0.00	0.00	0.00	0.00	0.00	0.00	0.00	0.00	0.00	0.00	0.00			
130	0.00	0.00	0.00	0.00	0.00	0.00	0.00	0.00	0.00	0.00	0.00	0.00	0.00	0.00	0.00	0.00			
135	0.00	0.00	0.00	0.00	0.00	0.00	0.00	0.00	0.00	0.00	0.00	0.00	0.00	0.00	0.00	0.00			
140	0.00	0.00	0.00	0.00	0.00	0.00	0.00	0.00	0.00	0.00	0.00	0.00	0.00	0.00	0.00	0.00			
145	0.00	0.00	0.00	0.00	0.00	0.00	0.00	0.00	0.00	0.00	0.00	0.00	0.00	0.00	0.00	0.00			
150	0.00	0.00	0.00	0.00	0.00	0.00	0.00	0.00	0.00	0.00	0.00	0.00	0.00	0.00	0.00	0.00			
155	0.00	0.00	0.00	0.00	0.00	0.00	0.00	0.00	0.00	0.00	0.00	0.00	0.00	0.00	0.00	0.00			
160	0.00	0.00	0.00	0.00	0.00	0.00	0.00	0.00	0.00	0.00	0.00	0.00	0.00	0.00	0.00	0.00			
165	0.00	0.00	0.00	0.00	0.00	0.00	0.00	0.00	0.00	0.00	0.00	0.00	0.00	0.00	0.00	0.00			
170	0.00	0.00	0.00	0.00	0.00	0.00	0.00	0.00	0.00	0.00	0.00	0.00	0.00	0.00	0.00	0.00			
175	0.00	0.00	0.00	0.00	0.00	0.00	0.00	0.00	0.00	0.00	0.00	0.00	0.00	0.00	0.00	0.00			
180	0.00	0.00	0.00	0.00	0.00	0.00	0.00	0.00	0.00	0.00	0.00	0.00	0.00	0.00	0.00	0.00			

C Range: 0 - 360DEG

C Interval: 22.5DEG

Test Speed: HIGH

Temperature:25DEG

Operators:Marçal Huguet

Test Date:March 2021

γ Range: 0 - 110DEG

γ Interval: 1.0DEG

Test System:EVERFINE GO-2000B_V1 SYSTEM V2.0.400

Humidity:37%

Test Distance:8.200m [K=1.0000]

Remarks: