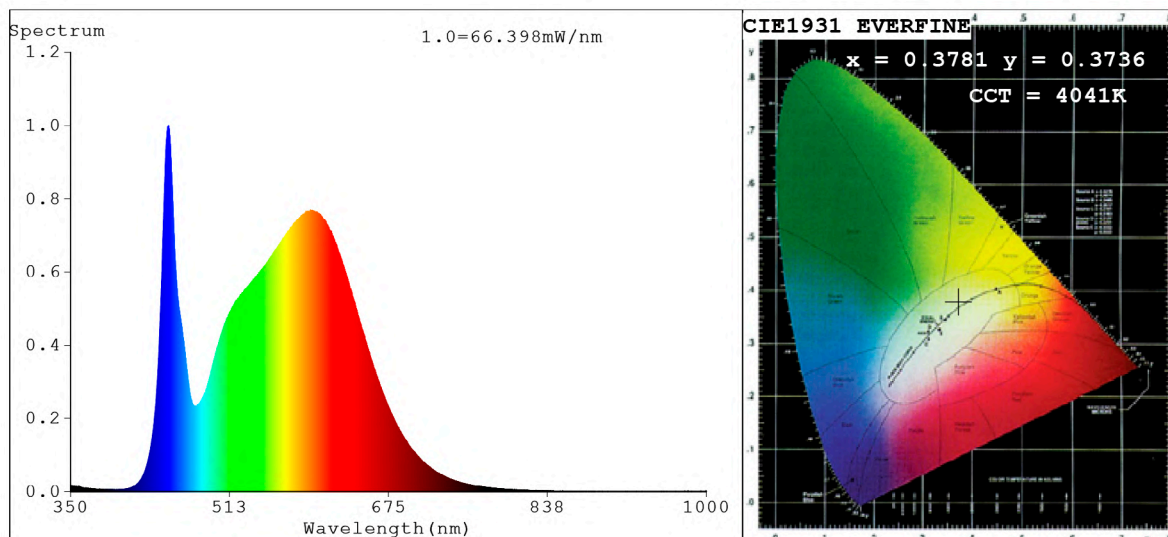


## Spectrum Test Report



### Color Parameters:

Chromaticity Coordinate:  $x=0.3781$   $y=0.3736$   $u'=0.2249$   $v'=0.4998$   
 CCT=4041K (Duv=-0.0008) Dominant WL:Ld =579.4nm Purity=25.6%  
 Ratio:R=18.6% G=77.6% B=3.8%; Peak WL:Lp=450.2nm FWHM=18.8nm  
 Render Index:Ra=85.3 CRI=79.4 TM30:Rf=84 Rg=97  
 R1 =84 R2 =91 R3 =95 R4 =85 R5 =84 R6 =87 R7 =87  
 R8 =69 R9 =21 R10=78 R11=84 R12=64 R13=86 R14=97 R15=79

### Photo Parameters:

Flux = 2983 lm Eff. : 143.75 lm/W Fe = 9.287 W Scotopic:5143 S/P:1.7241

### Electrical parameters:

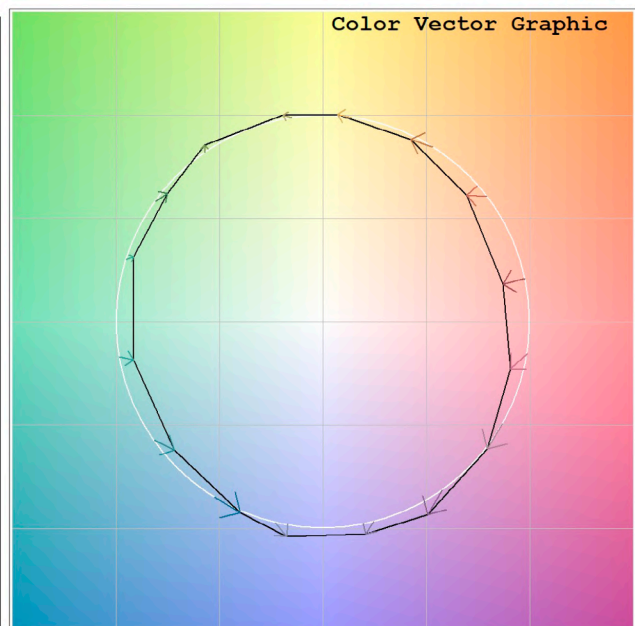
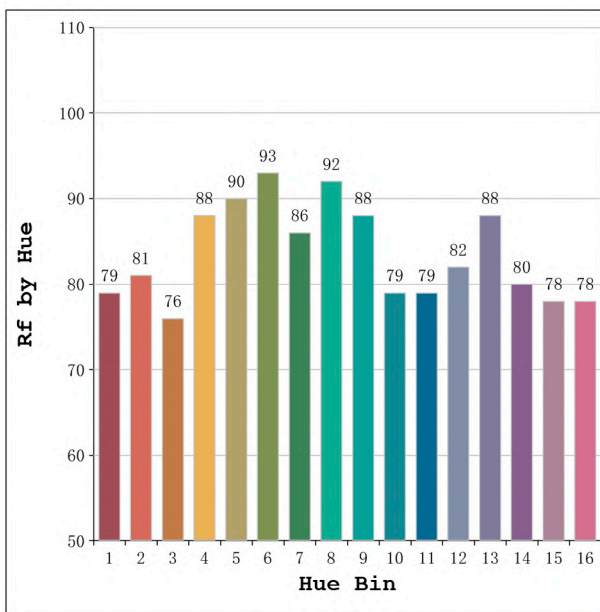
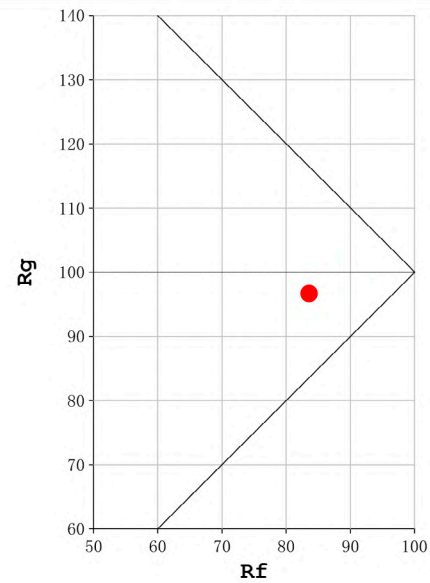
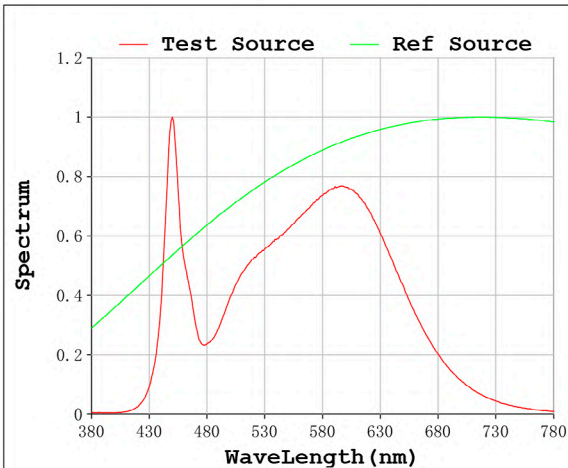
V = 23.998 V I = 0.8647 A P = 20.75 W PF = 1.000

Status: Integral T = 456 ms Ip = 52069 (79%)

Model:Ecoled Granada 4000K  
 Tester:Sergio Carneros  
 Temperature:15Deg  
 Manufacturer:Luz Negra S.L

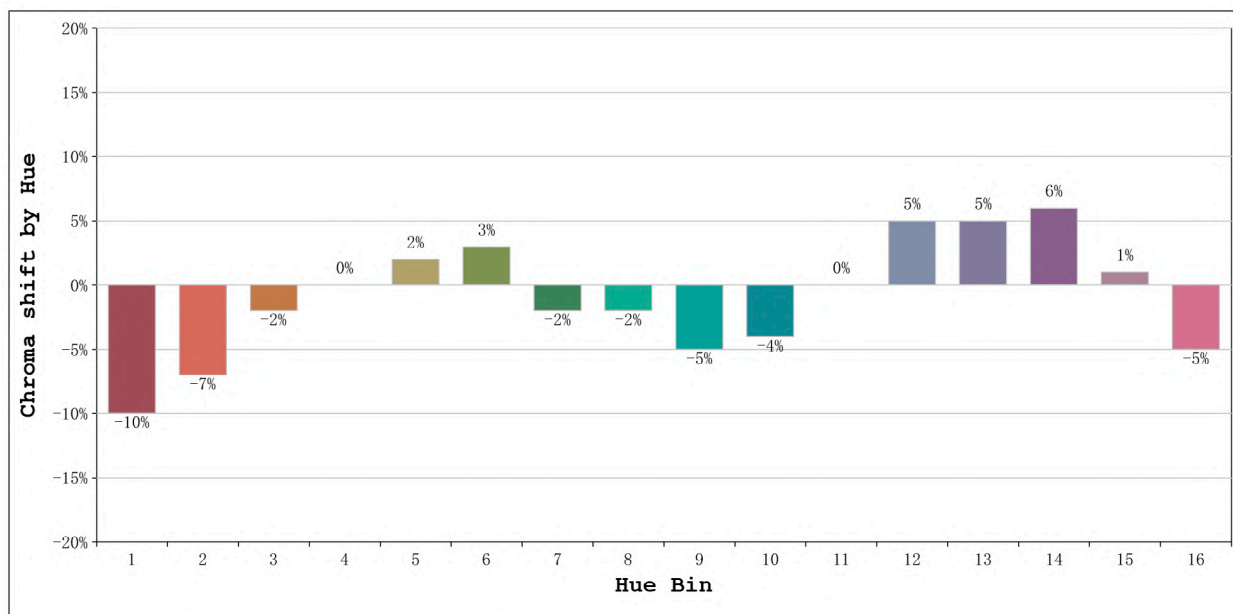
Number: 33.028  
 Date:25-5-2021  
 Humidity:57%  
 Remarks:100cm de tira flexible

**Rf: 84**      **CCT: 4041 K**      **u': 0.2249**  
**Rg: 97**      **Duv: -0.0008**      **v': 0.4998**



Model:Ecoled Granada 4000K  
 Tester:Sergio Carneros  
 Temperature:15Deg  
 Manufacturer:Luz Negra S.L

Number: 33.028  
 Date:25-5-2021  
 Humidity:57%  
 Remarks:100cm de tira flexible



Hue Bin	Hue Angle	Rf	Graphic shift(%)	
			Chroma	Hue
1	0.0° - 22.5°	79	-10	0
2	22.5° - 45.0°	81	-7	6
3	45.0° - 67.5°	76	-2	11
4	67.5° - 90.0°	88	0	7
5	90.0° - 112.5°	90	2	4
6	112.5° - 135.0°	93	3	-1
7	135.0° - 157.5°	86	-2	-5
8	157.5° - 180.0°	92	-2	-1
9	180.0° - 202.5°	88	-5	3
10	202.5° - 225.0°	79	-4	9
11	225.0° - 247.5°	79	0	14
12	247.5° - 270.0°	82	5	7
13	270.0° - 292.5°	88	5	-4
14	292.5° - 315.0°	80	6	-11
15	315.0° - 337.5°	78	1	-13
16	337.5° - 360.0°	78	-5	-8

Model:Ecoled Granada 4000K  
 Tester:Sergio Carneros  
 Temperature:15Deg  
 Manufacturer:Luz Negra S.L

Number: 33.028  
 Date:25-5-2021  
 Humidity:57%  
 Remarks:100cm de tira flexible