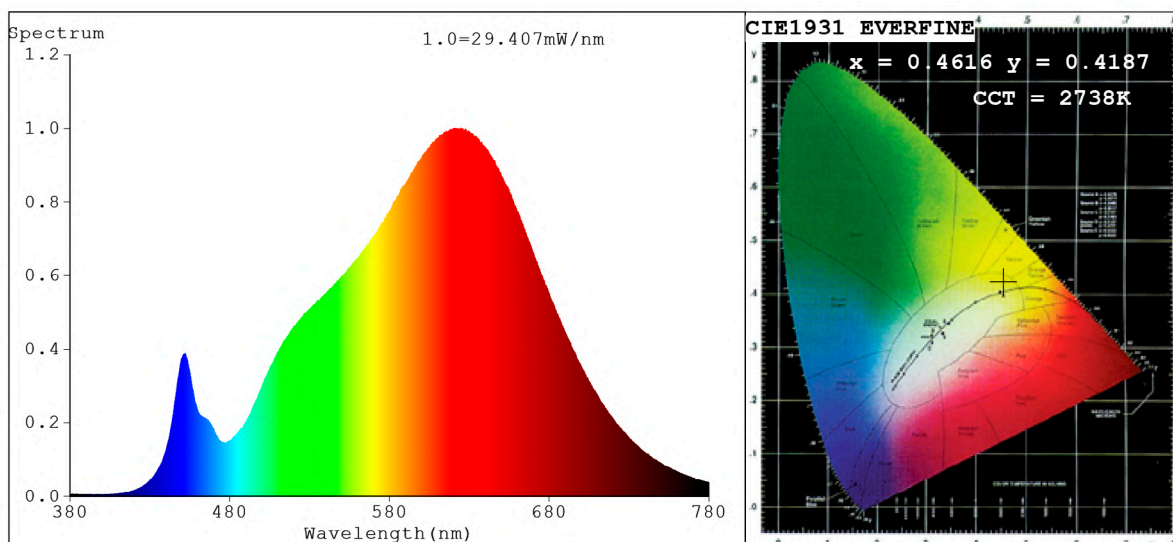


Spectrum Test Report



Color Parameters:

Chromaticity Coordinate: $x=0.4616$ $y=0.4187$ $u'=0.2600$ $v'=0.5306$
 CCT=2738K (Duv=0.0028) Dominant WL:Ld =583.1nm Purity=64.2%
 Ratio:R=25.6% G=72.2% B=2.1%; Peak WL:Lp=624.7nm FWHM=156.4nm
 Render Index:Ra=90.8 CRI=87.2 TM30:Rf=91 Rg=98
 R1 =90 R2 =94 R3 =96 R4 =92 R5 =90 R6 =93 R7 =93
 R8 =80 R9 =53 R10=85 R11=92 R12=77 R13=91 R14=97 R15=86

Photo Parameters:

Flux = 1398 lm Eff. : 93.23 lm/W Fe = 4.865 W Scotopic:1747.1 S/P:1.2501

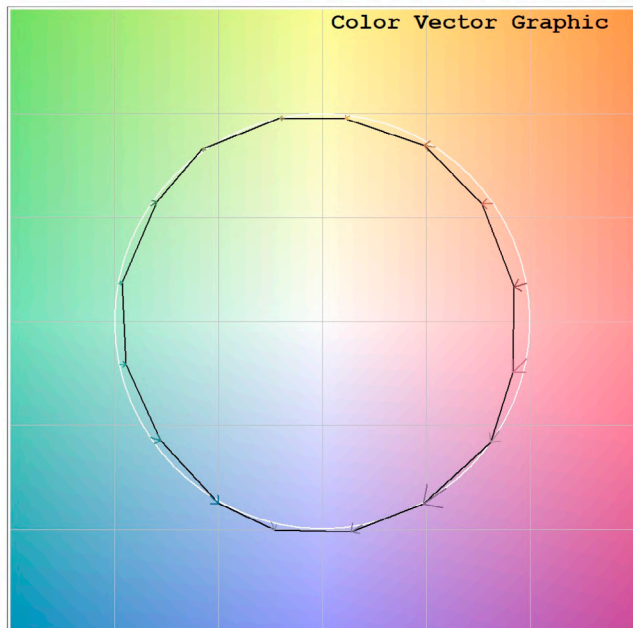
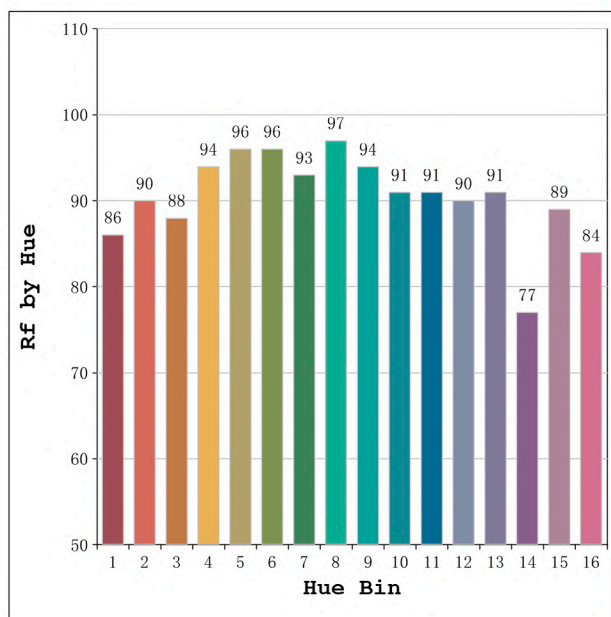
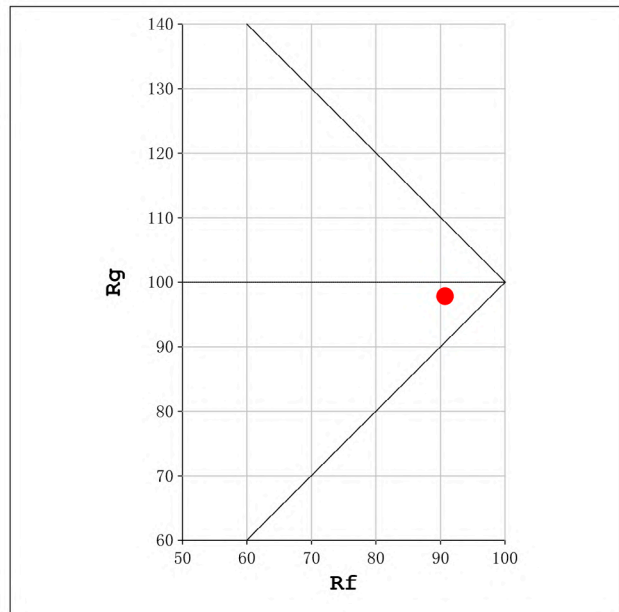
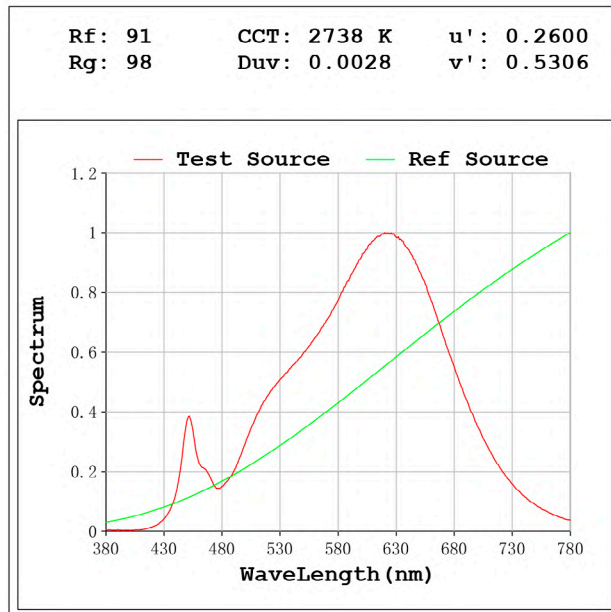
Electrical parameters:

V = 23.998 V I = 0.6247 A P = 14.99 W PF = 1.000

Status: Integral T = 786 ms Ip = 43907 (67%)

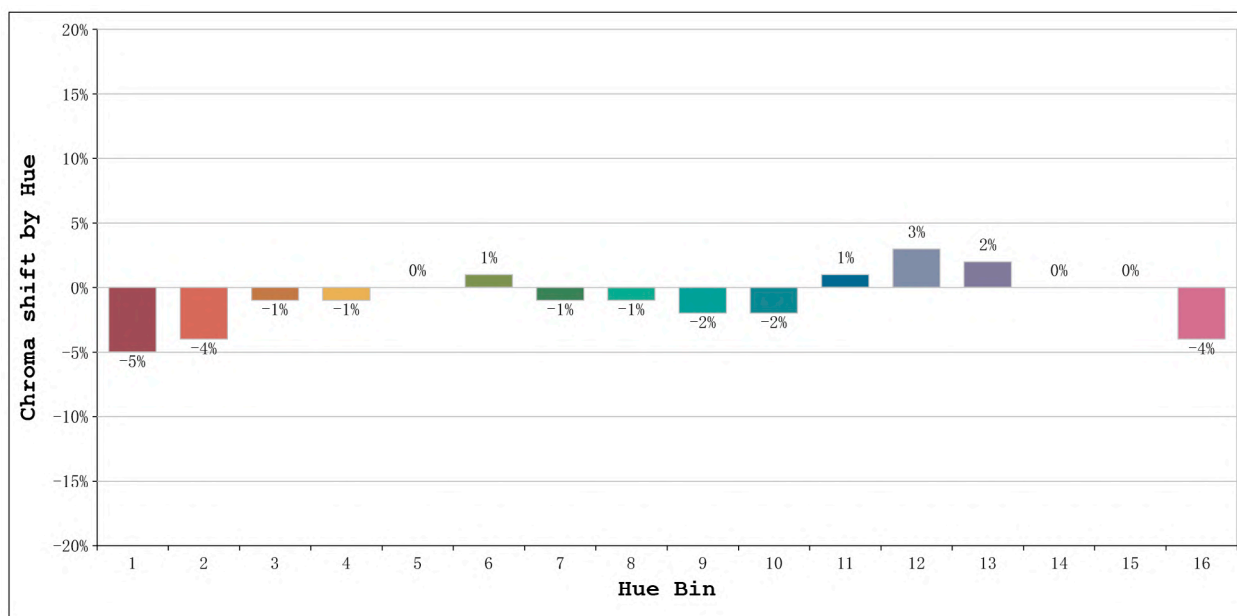
Model:Ecoled COB 15w 2700K
 Tester:Sergio Carneros
 Temperature:25Deg
 Manufacturer:Luz Negra

Number: 31.157
 Date:2023-12-14 08:16:54
 Humidity:57%
 Remarks:100cm de tira flexible



Model:Ecoled COB 15w 2700K
 Tester:Sergio Carneros
 Temperature:25Deg
 Manufacturer:Luz Negra

Number: 31.157
 Date:2023-12-14 08:16:54
 Humidity:57%
 Remarks:100cm de tira flexible



Hue Bin	Hue Angle	Rf	Graphic shift(%)	
			Chroma	Hue
1	0.0° - 22.5°	86	-5	0
2	22.5° - 45.0°	90	-4	2
3	45.0° - 67.5°	88	-1	5
4	67.5° - 90.0°	94	-1	2
5	90.0° - 112.5°	96	0	2
6	112.5° - 135.0°	96	1	1
7	135.0° - 157.5°	93	-1	-2
8	157.5° - 180.0°	97	-1	0
9	180.0° - 202.5°	94	-2	1
10	202.5° - 225.0°	91	-2	4
11	225.0° - 247.5°	91	1	6
12	247.5° - 270.0°	90	3	2
13	270.0° - 292.5°	91	2	-5
14	292.5° - 315.0°	77	0	-12
15	315.0° - 337.5°	89	0	-6
16	337.5° - 360.0°	84	-4	-7

Model:Ecoled COB 15w 2700K
 Tester:Sergio Carneros
 Temperature:25Deg
 Manufacturer:Luz Negra

Number: 31.157
 Date:2023-12-14 08:16:54
 Humidity:57%
 Remarks:100cm de tira flexible