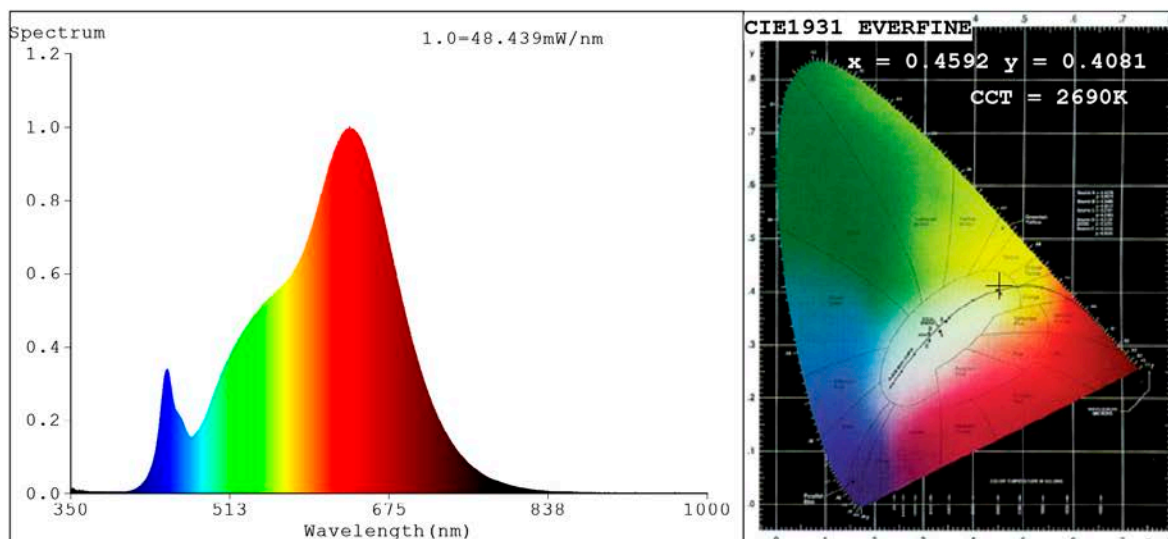


## Spectrum Test Report



### Color Parameters:

Chromaticity Coordinate:  $x=0.4592$   $y=0.4081$   $u'=0.2632$   $v'=0.5263$

CCT=2690K (Duv=-0.0009) Dominant WL:  $\lambda_d = 584.5nm$  Purity=60.3%

Ratio: R=27.5% G=70.0% B=2.5%; Peak WL:  $\lambda_p = 634.9nm$  FWHM=148.2nm

Render Index: Ra=97.6 CRI=96.5 TM30: Rf=95 Rg=103

R1 =98 R2 =99 R3 =95 R4 =96 R5 =99 R6 =98 R7 =98

R8 =97 R9 =93 R10=97 R11=93 R12=93 R13=99 R14=96 R15=99

### Photo Parameters:

Flux = 2017 lm Eff. : 99.17 lm/W Fe = 7.823 W Scotopic: 2653.9 S/P: 1.3159

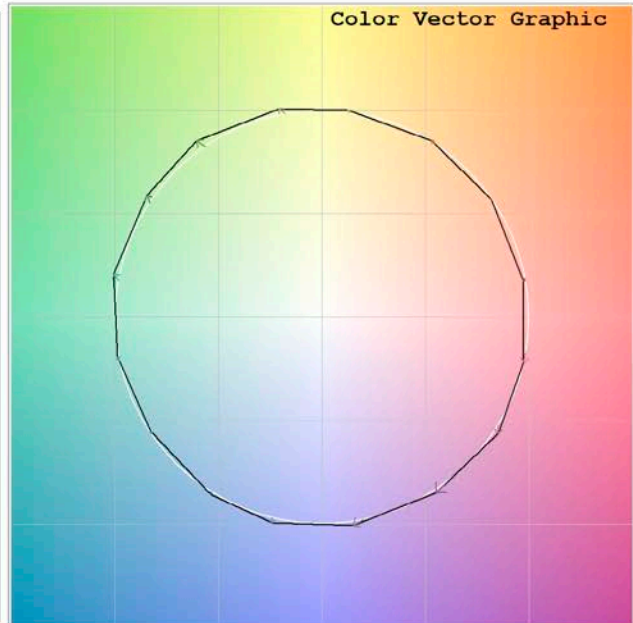
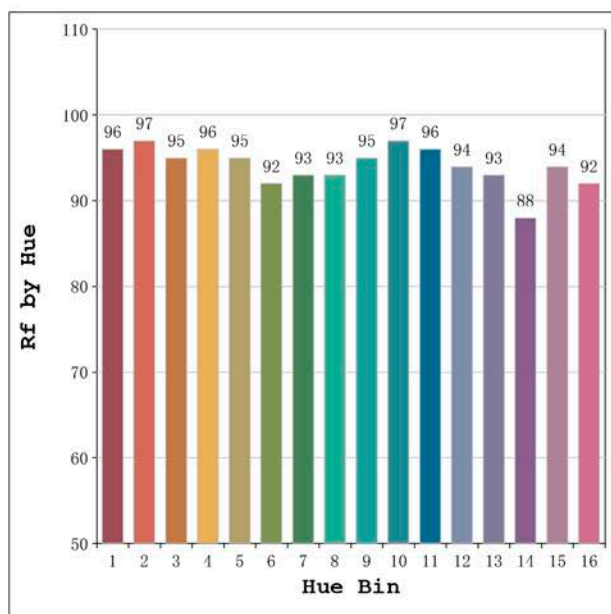
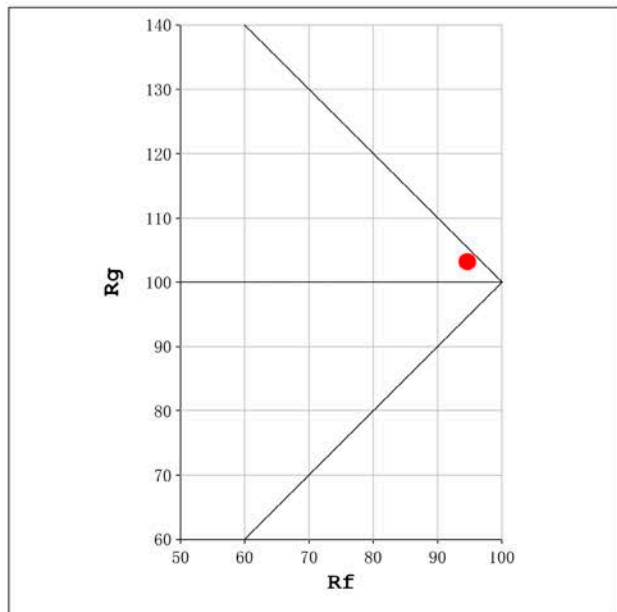
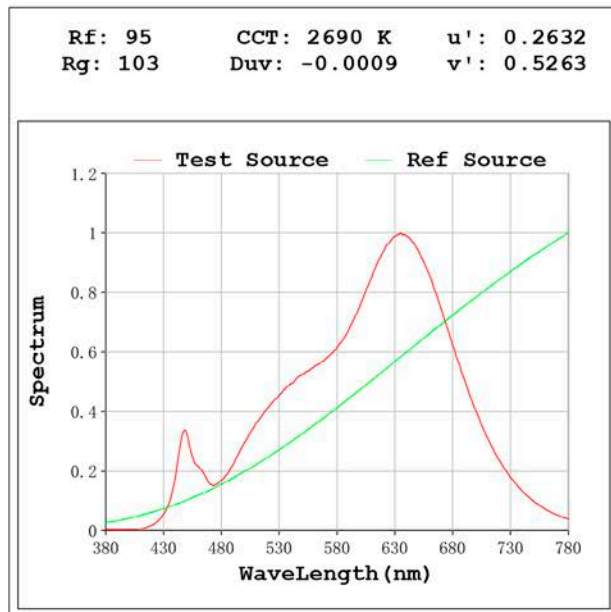
### Electrical parameters:

V = 23.998 V I = 0.8475 A P = 20.34 W PF = 1.000

Status: Integral T = 500 ms Ip = 38838 (59%)

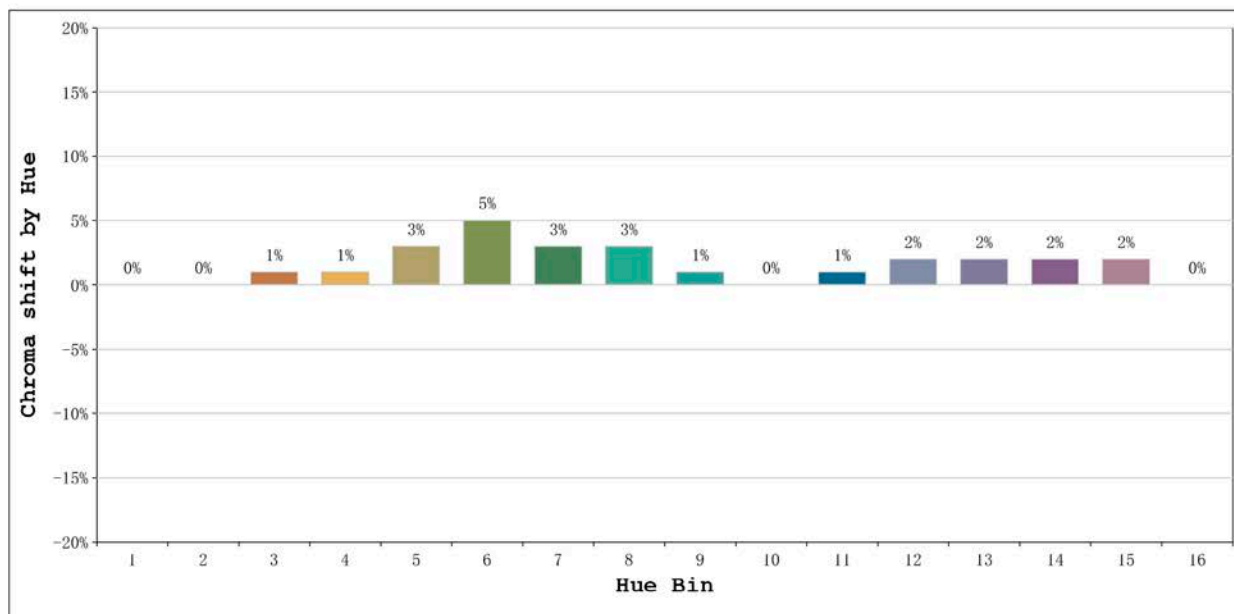
Model: Ecoled Sevilla 2700K  
 Tester: Sergio Carneros  
 Temperature: 325Deg  
 Manufacturer: Luz Negra

Number: 33.004  
 Date: 26-5-2021  
 Humidity: 57%  
 Remarks: 100cm de tira flexible



Model:Ecoled Sevilla 2700K  
 Tester:Sergio Carneros  
 Temperature:325Deg  
 Manufacturer:Luz Negra

Number: 33.004  
 Date:26-5-2021  
 Humidity:57%  
 Remarks:100cm de tira flexible



			Graphic shift(%)	
Hue Bin	Hue Angle	Rf	Chroma	Hue
1	0.0° - 22.5°	96	0	0
2	22.5° - 45.0°	97	0	0
3	45.0° - 67.5°	95	1	2
4	67.5° - 90.0°	96	1	1
5	90.0° - 112.5°	95	3	2
6	112.5° - 135.0°	92	5	2
7	135.0° - 157.5°	93	3	-1
8	157.5° - 180.0°	93	3	-2
9	180.0° - 202.5°	95	1	-1
10	202.5° - 225.0°	97	0	0
11	225.0° - 247.5°	96	1	1
12	247.5° - 270.0°	94	2	0
13	270.0° - 292.5°	93	2	-4
14	292.5° - 315.0°	88	2	-6
15	315.0° - 337.5°	94	2	-2
16	337.5° - 360.0°	92	0	-4

Model:Ecoled Sevilla 2700K  
 Tester:Sergio Carneros  
 Temperature:325Deg  
 Manufacturer:Luz Negra

Number: 33.004  
 Date:26-5-2021  
 Humidity:57%  
 Remarks:100cm de tira flexible