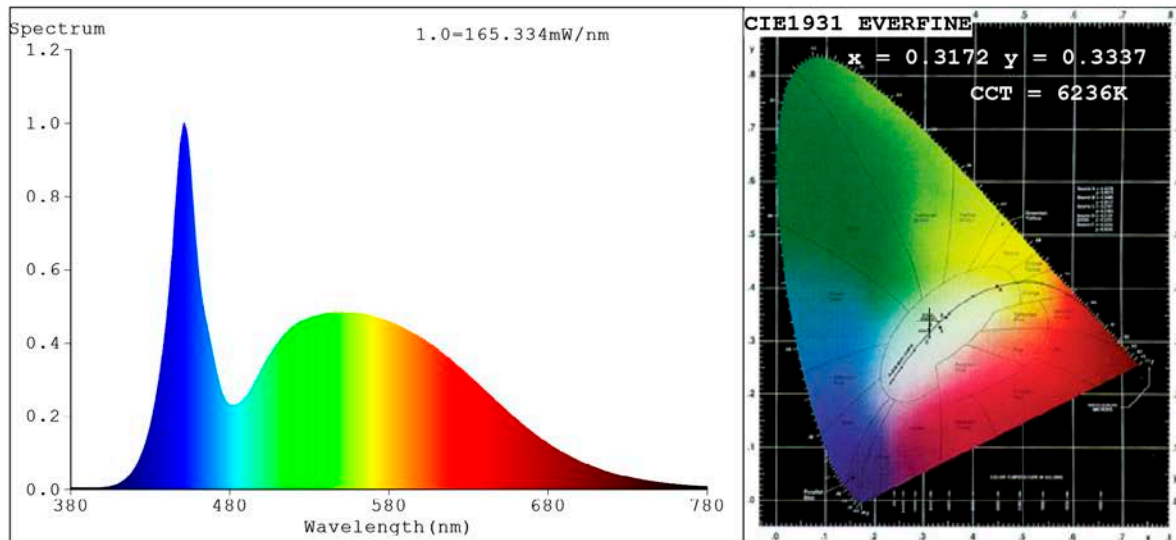


Spectrum Test Report



Color Parameters:

Chromaticity Coordinate: $x=0.3172$ $y=0.3337$ $u'=0.1992$ $v'=0.4715$
 CCT=6236K (Duv=0.0034) Dominant WL:Ld =492.0nm Purity=5.4%
 Ratio:R=13.9% G=80.7% B=5.3%;; Peak WL:Lp=451.2nm FWHM=22.2nm
 Render Index:Ra=84.6 CRI=78.1 TM30:Rf=83 Rg=96
 R1 =83 R2 =88 R3 =89 R4 =85 R5 =84 R6 =82 R7 =90
 R8 =76 R9 =25 R10=69 R11=84 R12=60 R13=84 R14=94 R15=80

Photo Parameters:

Flux = 5169 lm Eff. : 131.48 lm/W Fe = 17.16 W Scotopic:11357 S/P:2.197

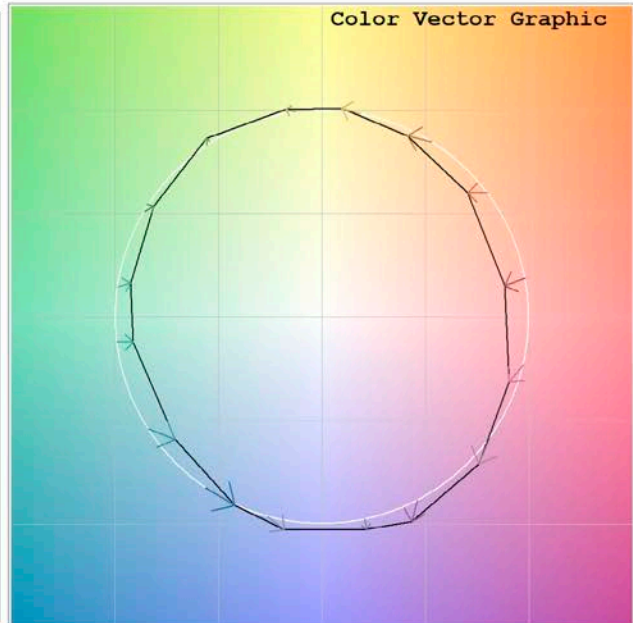
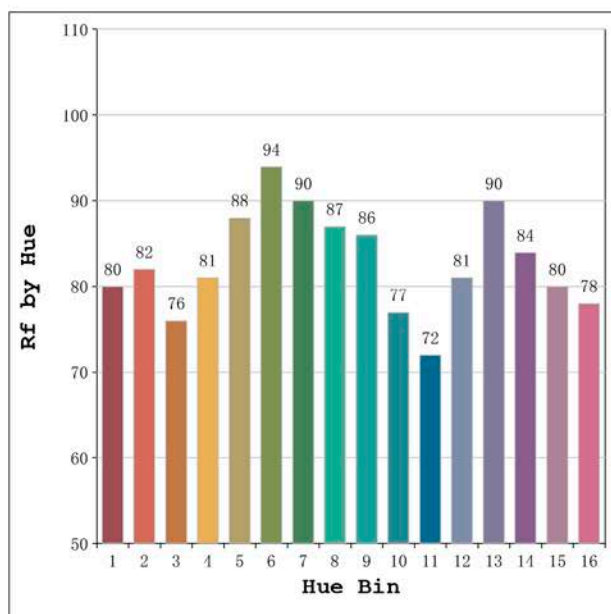
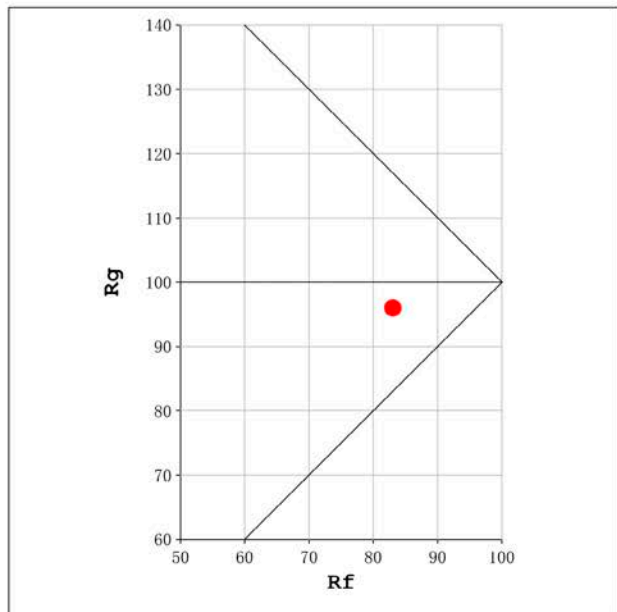
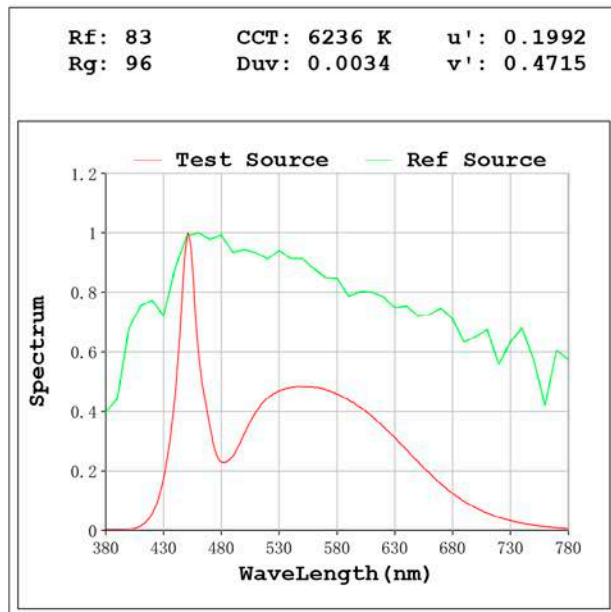
Electrical parameters:

V = 24.198 V I = 1.625 A P = 39.32 W PF = 1.000

Status: Integral T = 219 ms Ip = 55939 (85%)

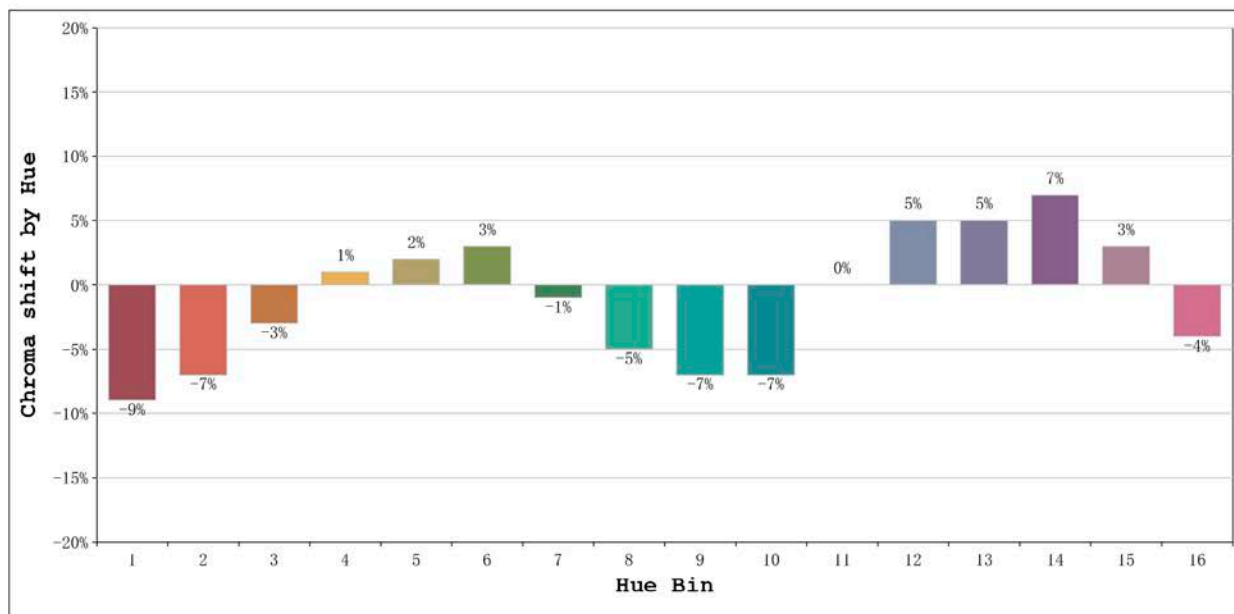
Model:Ecoled Córdoba 6000K
 Tester:Sergio Carneros
 Temperature:25Deg
 Manufacturer:Luz Negra S.L

Number: 33.198
 Date:2021-09-09 11:35:06
 Humidity:57%
 Remarks:100cm de tira flexible



Model:Ecoled Córdoba 6000K
 Tester:Sergio Carneros
 Temperature:25Deg
 Manufacturer:Luz Negra S.L

Number: 33.198
 Date:2021-09-09 11:35:06
 Humidity:57%
 Remarks:100cm de tira flexible



			Graphic shift(%)	
Hue Bin	Hue Angle	Rf	Chroma	Hue
1	0.0° - 22.5°	80	-9	-1
2	22.5° - 45.0°	82	-7	5
3	45.0° - 67.5°	76	-3	11
4	67.5° - 90.0°	81	1	9
5	90.0° - 112.5°	88	2	5
6	112.5° - 135.0°	94	3	-1
7	135.0° - 157.5°	90	-1	-4
8	157.5° - 180.0°	87	-5	-2
9	180.0° - 202.5°	86	-7	2
10	202.5° - 225.0°	77	-7	12
11	225.0° - 247.5°	72	0	17
12	247.5° - 270.0°	81	5	10
13	270.0° - 292.5°	90	5	0
14	292.5° - 315.0°	84	7	-7
15	315.0° - 337.5°	80	3	-12
16	337.5° - 360.0°	78	-4	-8

Model:Ecoled Córdoba 6000K
Tester:Sergio Carneros
Temperature:25Deg
Manufacturer:Luz Negra S.L

Number: 33.198
Date:2021-09-09 11:35:06
Humidity:57%
Remarks:100cm de tira flexible