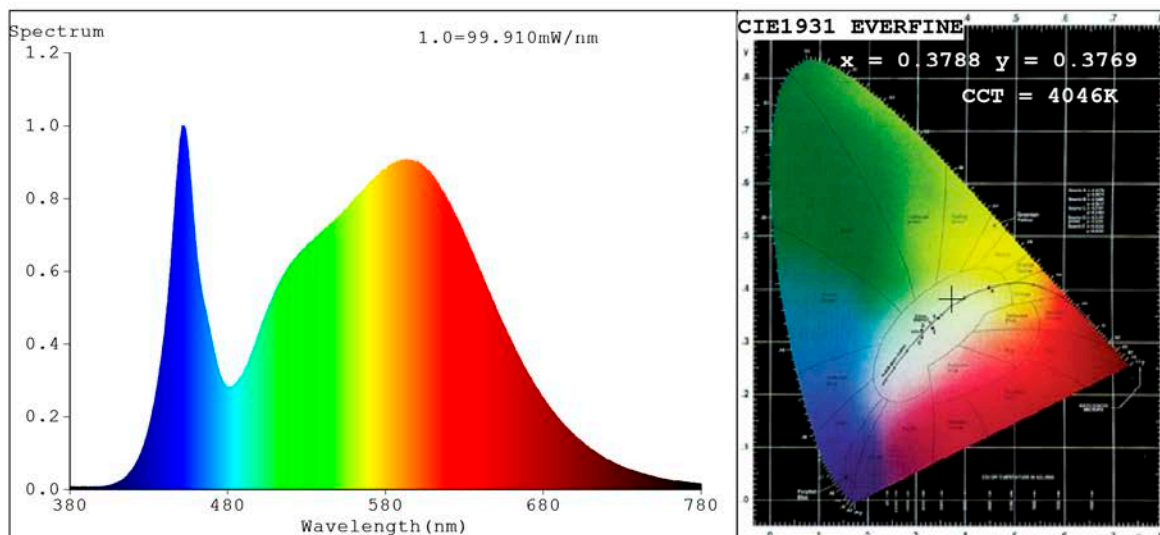


Spectrum Test Report



Color Parameters:

Chromaticity Coordinate: $x=0.3788$ $y=0.3769$ $u'=0.2240$ $v'=0.5014$
 CCT=4046K (Duv=0.0006) Dominant WL:Ld =578.6nm Purity=26.8%
 Ratio:R=18.2% G=78.1% B=3.7%;;Peak WL:Lp=451.2nm FWHM=24.1nm
 Render Index:Ra=83.7 CRI=77.4 TM30:Rf=83 Rg=96
 R1 =82 R2 =89 R3 =94 R4 =83 R5 =82 R6 =85 R7 =87
 R8 =67 R9 =15 R10=74 R11=81 R12=62 R13=84 R14=97 R15=77

Photo Parameters:

Flux = 5322 lm Eff. : 137.80 lm/W Fe = 16.49 W Scotopic:9064.1 S/P:1.7031

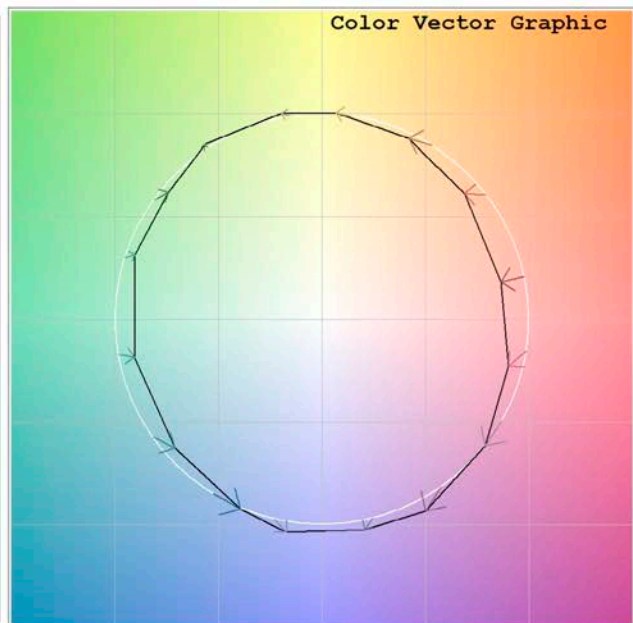
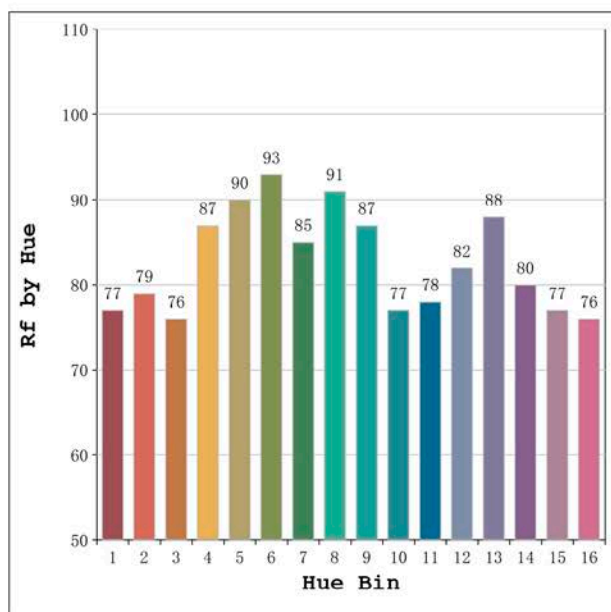
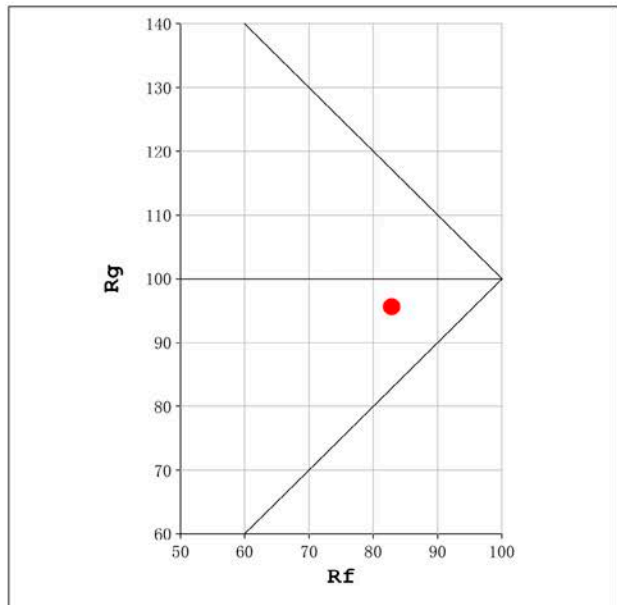
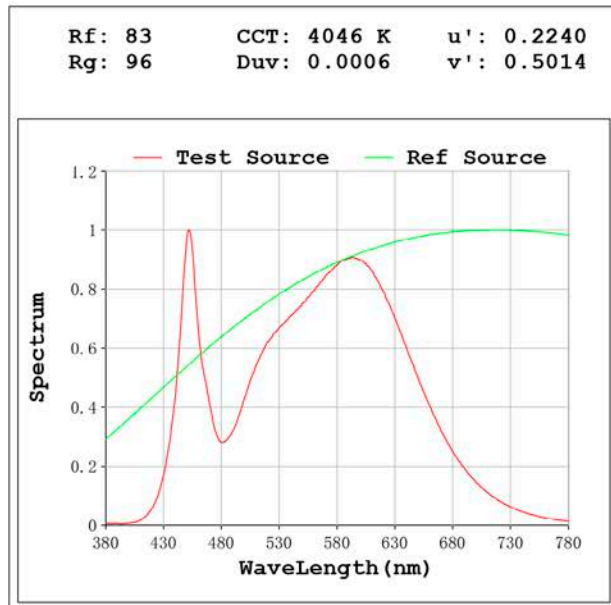
Electrical parameters:

V = 24.198 V I = 1.596 A P = 38.62 W PF = 1.000

Status: Integral T = 219 ms Ip = 43060 (66%)

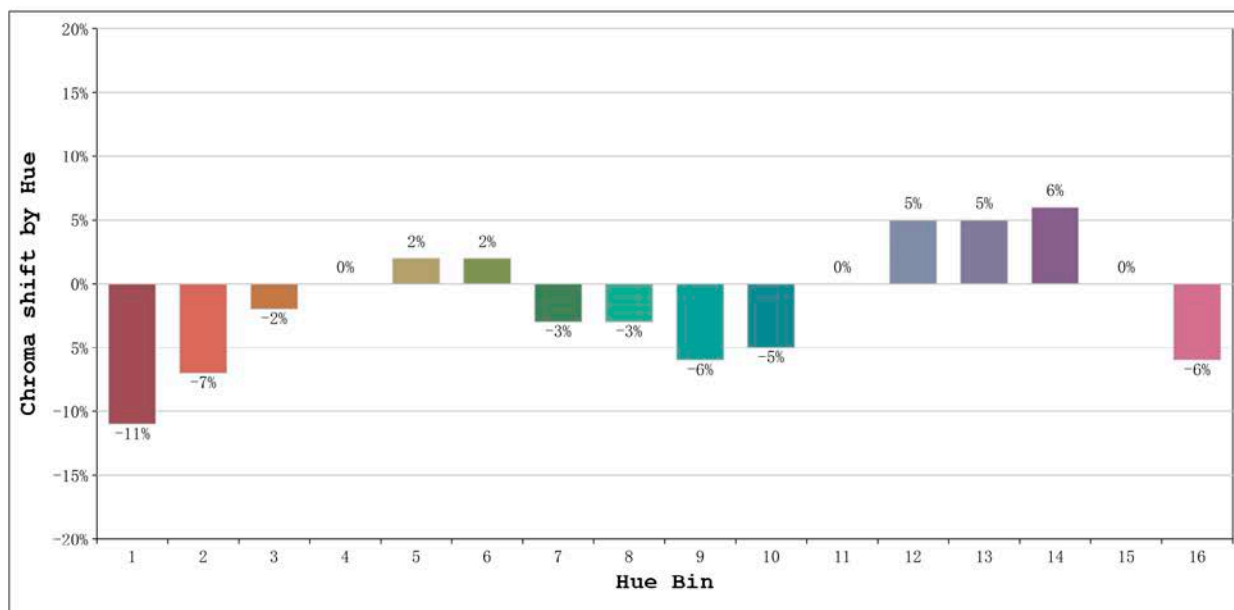
Model:Ecoled Córdoba 4000K
 Tester:Sergio Carneros
 Temperature:25Deg
 Manufacturer:Luz Negra S.L

Number: 33.001
 Date:2021-09-09 10:59:44
 Humidity:57%
 Remarks:100cm de tira flexible



Model:Ecoled Córdoba 4000K
 Tester:Sergio Carneros
 Temperature:25Deg
 Manufacturer:Luz Negra S.L

Number: 33.001
 Date:2021-09-09 10:59:44
 Humidity:57%
 Remarks:100cm de tira flexible



Hue Bin	Hue Angle	Rf	Graphic shift(%)	
			Chroma	Hue
1	0.0° - 22.5°	77	-11	0
2	22.5° - 45.0°	79	-7	6
3	45.0° - 67.5°	76	-2	11
4	67.5° - 90.0°	87	0	7
5	90.0° - 112.5°	90	2	4
6	112.5° - 135.0°	93	2	-1
7	135.0° - 157.5°	85	-3	-6
8	157.5° - 180.0°	91	-3	-1
9	180.0° - 202.5°	87	-6	3
10	202.5° - 225.0°	77	-5	10
11	225.0° - 247.5°	78	0	15
12	247.5° - 270.0°	82	5	7
13	270.0° - 292.5°	88	5	-4
14	292.5° - 315.0°	80	6	-12
15	315.0° - 337.5°	77	0	-14
16	337.5° - 360.0°	76	-6	-8

Model:Ecoled Córdoba 4000K
Tester:Sergio Carneros
Temperature:25Deg
Manufacturer:Luz Negra S.L

Number: 33.001
Date:2021-09-09 10:59:44
Humidity:57%
Remarks:100cm de tira flexible