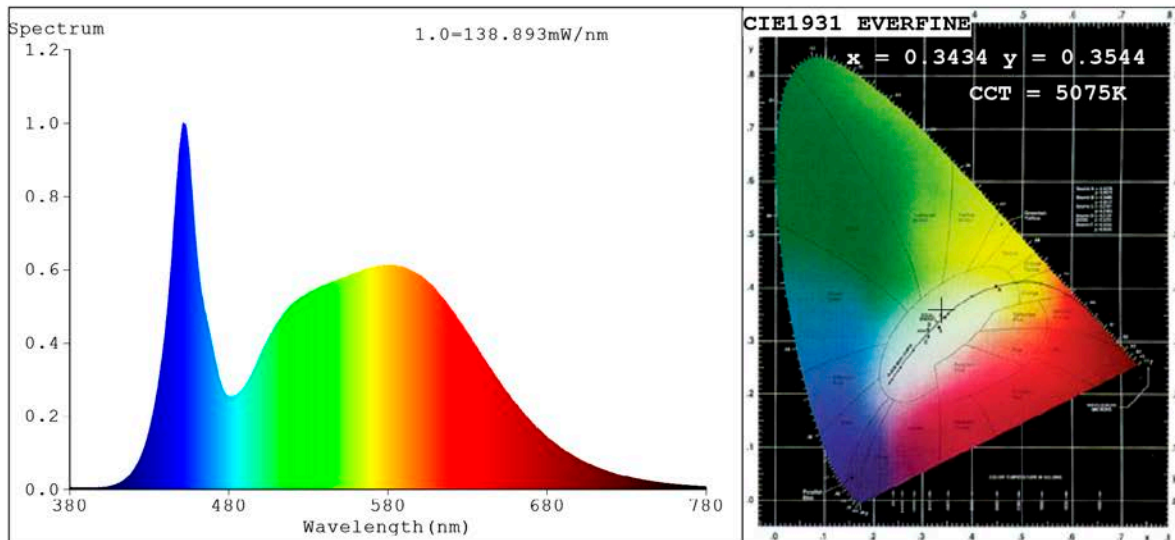


Spectrum Test Report



Color Parameters:

Chromaticity Coordinate: $x=0.3434$ $y=0.3544$ $u'=0.2092$ $v'=0.4858$
 CCT=5075K (Duv=0.0021) Dominant WL:Ld =569.5nm Purity=9.4%
 Ratio:R=15.6% G=79.8% B=4.6%;;Peak WL:Lp=451.5nm FWHM=22.8nm
 Render Index:Ra=83.3 CRI=76.6 TM30:Rf=82 Rg=95
 R1 =82 R2 =88 R3 =92 R4 =83 R5 =82 R6 =84 R7 =87
 R8 =68 R9 =11 R10=71 R11=82 R12=62 R13=83 R14=96 R15=77

Photo Parameters:

Flux = 5398 lm Eff. : 138.68 lm/W Fe = 17.00 W Scotopic:10635 S/P:1.9702

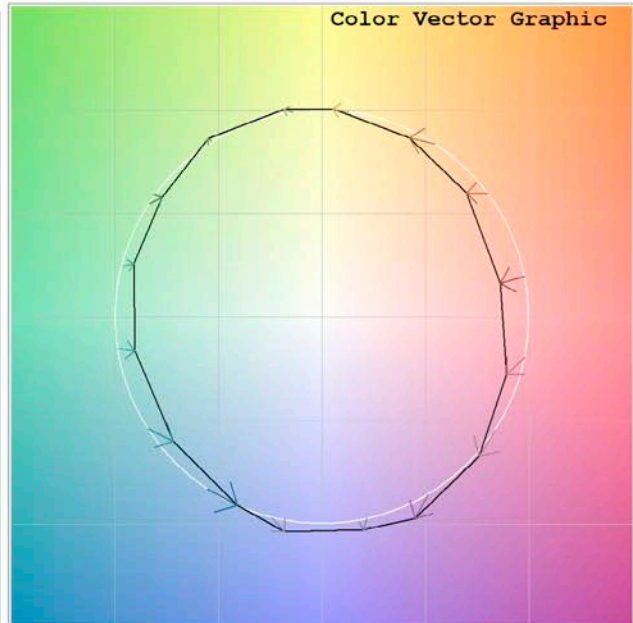
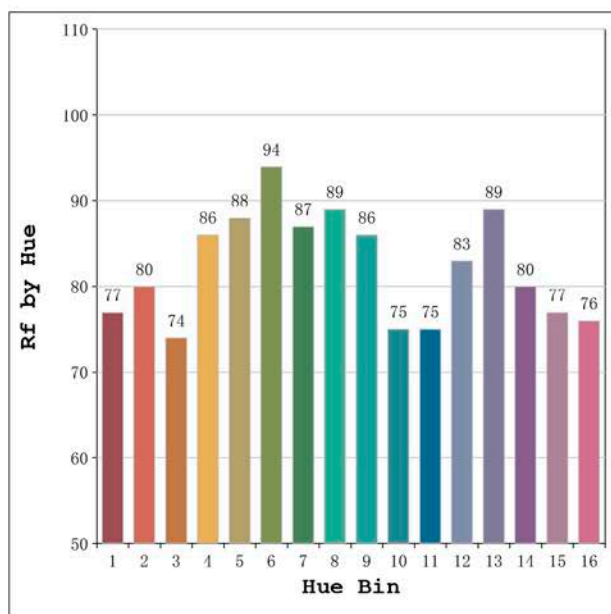
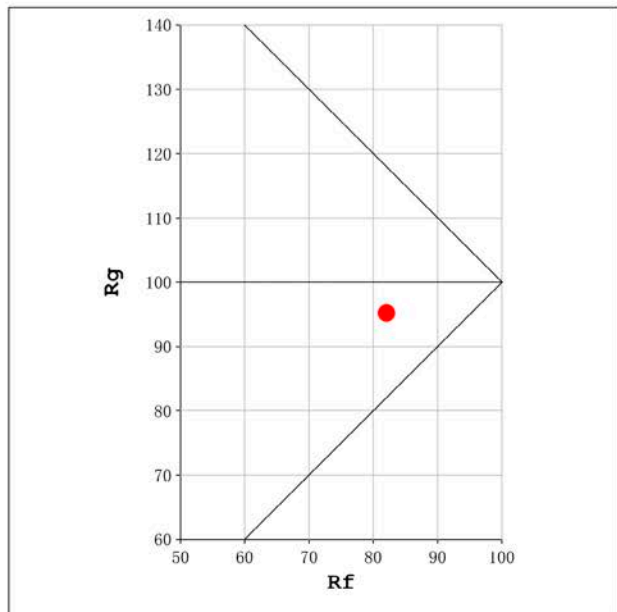
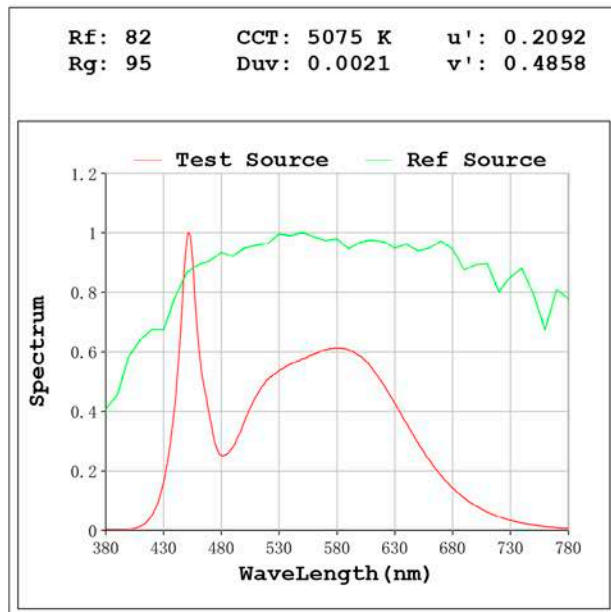
Electrical parameters:

V = 24.198 V I = 1.609 A P = 38.92 W PF = 1.000

Status: Integral T = 219 ms Ip = 47663 (73%)

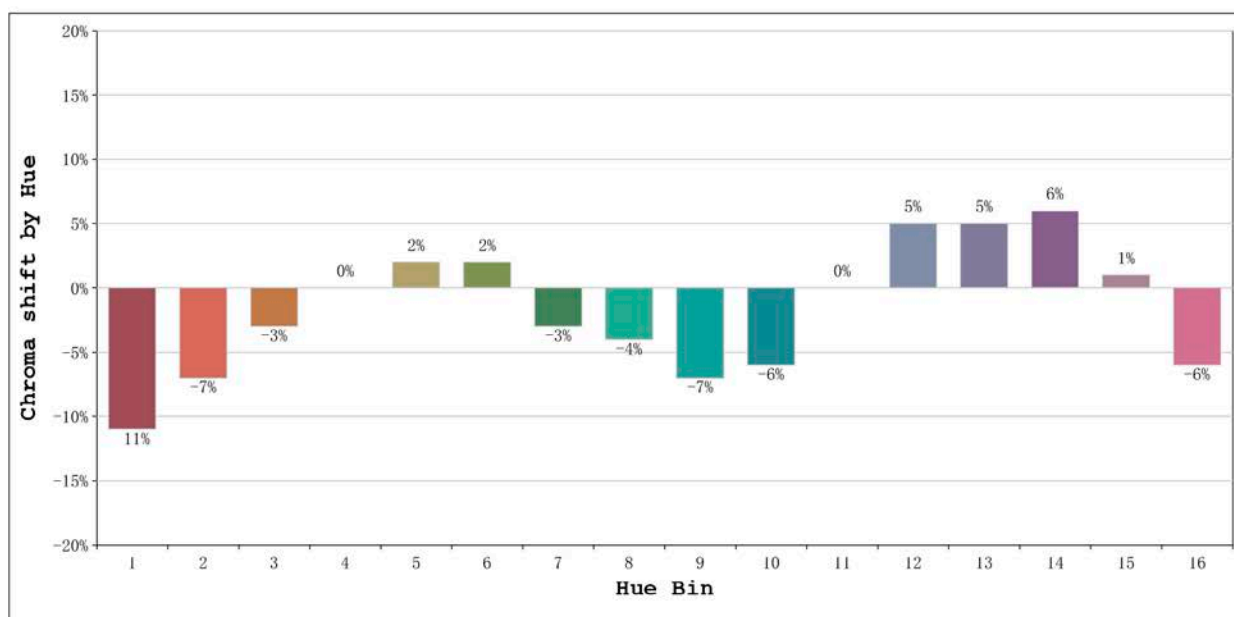
Model:Ecoled Córdoba 5000K
 Tester:Sergio Carneros
 Temperature:25Deg
 Manufacturer:Luz Negra S.L

Number: 33.196
 Date:2021-09-09 11:20:17
 Humidity:57%
 Remarks:100cm de tira flexible



Model:Ecoled Córdoba 5000K
 Tester:Sergio Carneros
 Temperature:25Deg
 Manufacturer:Luz Negra S.L

Number: 33.196
 Date:2021-09-09 11:20:17
 Humidity:57%
 Remarks:100cm de tira flexible



			Graphic shift(%)	
Hue Bin	Hue Angle	Rf	Chroma	Hue
1	0.0° - 22.5°	77	-11	0
2	22.5° - 45.0°	80	-7	6
3	45.0° - 67.5°	74	-3	12
4	67.5° - 90.0°	86	0	8
5	90.0° - 112.5°	88	2	4
6	112.5° - 135.0°	94	2	-1
7	135.0° - 157.5°	87	-3	-5
8	157.5° - 180.0°	89	-4	-1
9	180.0° - 202.5°	86	-7	3
10	202.5° - 225.0°	75	-6	12
11	225.0° - 247.5°	75	0	17
12	247.5° - 270.0°	83	5	7
13	270.0° - 292.5°	89	5	-2
14	292.5° - 315.0°	80	6	-11
15	315.0° - 337.5°	77	1	-14
16	337.5° - 360.0°	76	-6	-9

Model:Ecoled Córdoba 5000K
 Tester:Sergio Carneros
 Temperature:25Deg
 Manufacturer:Luz Negra S.L

Number: 33.196
 Date:2021-09-09 11:20:17
 Humidity:57%
 Remarks:100cm de tira flexible