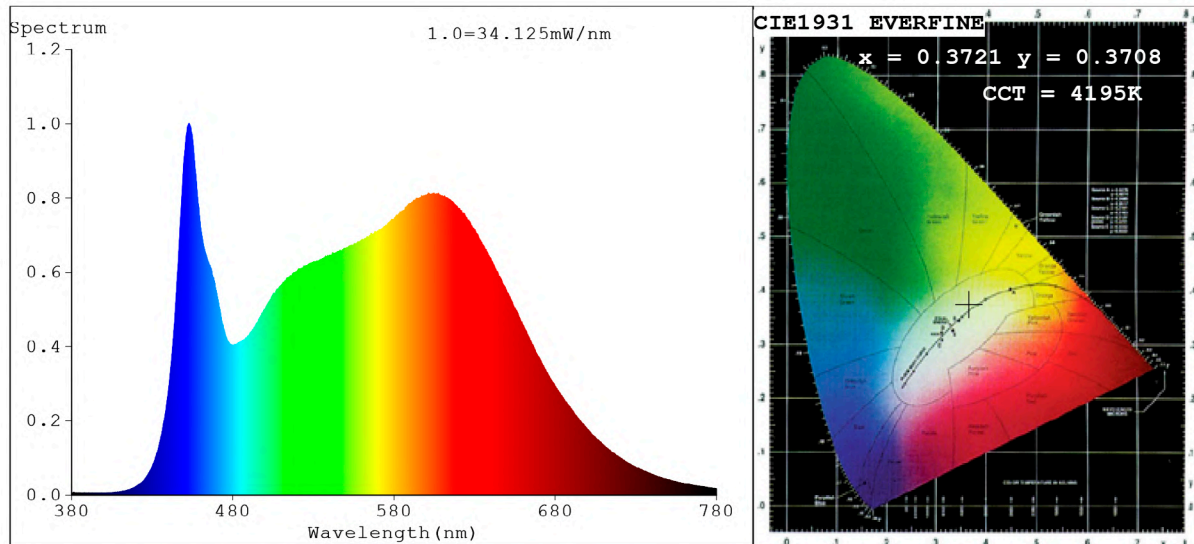


Spectrum Test Report



Color Parameters:

Chromaticity Coordinate: $x=0.3721$ $y=0.3708$ / $u'=0.2220$ $v'=0.4977$
 CCT=4195K (Duv=-0.0003) Dominant WL:Ld =578.5nm Purity=22.9%
 Ratio:R=19.2% G=76.0% B=4.8%; Peak WL:Lp=452.9nm FWHM=27.5nm
 Render Index:Ra=92.0 CRI=88.7 TM30:Rf=88 Rg=97 Lav=570.8nm
 R1 =93 R2 =98 R3 =97 R4 =90 R5 =92 R6 =95 R7 =90
 R8 =80 R9 =54 R10=94 R11=92 R12=72 R13=95 R14=99 R15=89

Photo Parameters:

Flux = 1674 lm Eff. : 117.62 lm/W Fe = 5.531 W Scotopic:3155.2 S/P:1.884

Electrical parameters:

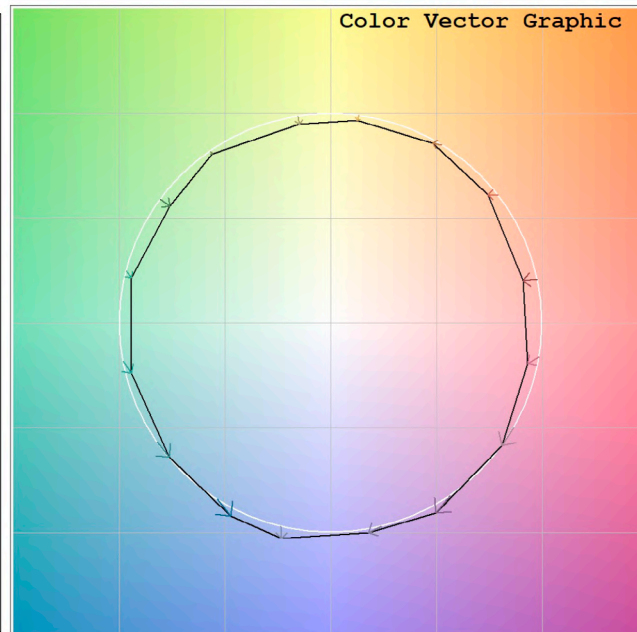
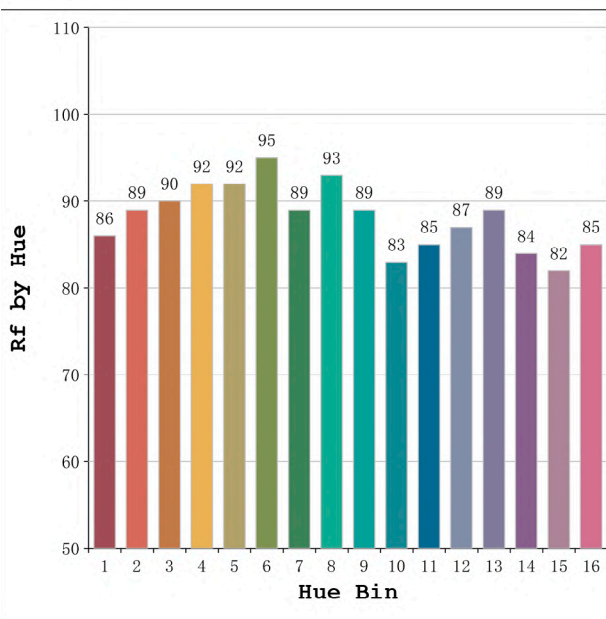
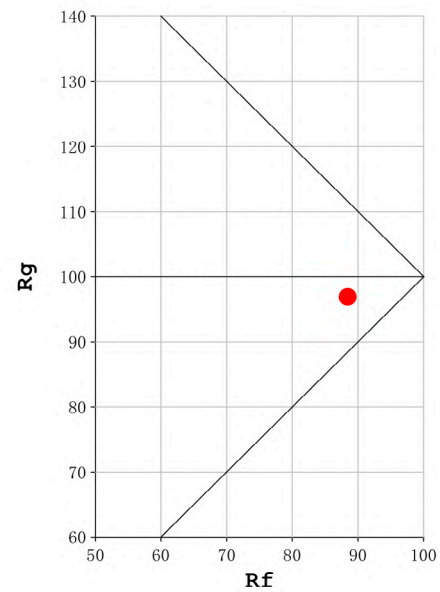
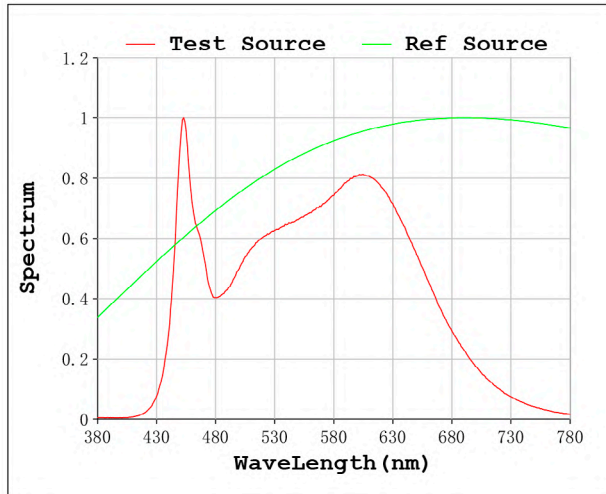
V = 23.998 V I = 0.5932 A P = 14.24 W PF = 1.000

Status: Integral T = 1000 ms Ip = 52124 (80%)

Model:Ecoled COB IP67 4000K
 Tester:Sergio Carneros
 Temperature:25Deg
 Manufacturer:Luz Negra S.L

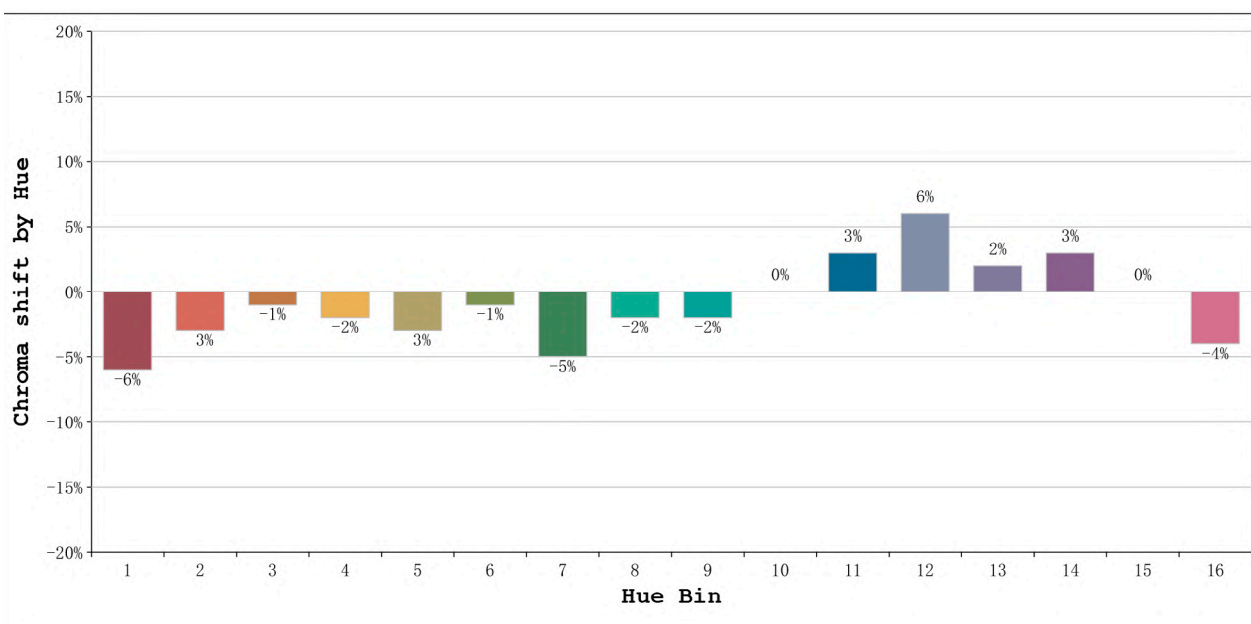
Number: 31.105
 Date:2021-02-18 12:19:45
 Humidity:57%
 Remarks:100cm Tira flexible

Rf: 88 **CCT: 4195 K** **u': 0.2220**
Rg: 97 **Duv: -0.0003** **v': 0.4977**



Model:Ecoled COB IP67 4000K
 Tester:Sergio Carneros
 Temperature:25Deg
 Manufacturer:Luz Negra S.L

Number: 31.105
 Date:2021-02-18 12:19:45
 Humidity:57%
 Remarks:100cm Tira flexible



Hue Bin	Hue Angle	Rf	Graphic shift(%)	
			Chroma	Hue
1	0.0° - 22.5°	86	-6	1
2	22.5° - 45.0°	89	-3	3
3	45.0° - 67.5°	90	-1	4
4	67.5° - 90.0°	92	-2	0
5	90.0° - 112.5°	92	-3	0
6	112.5° - 135.0°	95	-1	0
7	135.0° - 157.5°	89	-5	0
8	157.5° - 180.0°	93	-2	3
9	180.0° - 202.5°	89	-2	6
10	202.5° - 225.0°	83	0	9
11	225.0° - 247.5°	85	3	10
12	247.5° - 270.0°	87	6	2
13	270.0° - 292.5°	89	2	-6
14	292.5° - 315.0°	84	3	-9
15	315.0° - 337.5°	82	0	-9
16	337.5° - 360.0°	85	-4	-3

Model:Ecoled COB IP67 4000K
Tester:Sergio Carneros
Temperature:25Deg
Manufacturer:Luz Negra S.L

Number: 31.105
Date:2021-02-18 12:19:45
Humidity:57%
Remarks:100cm Tira flexible