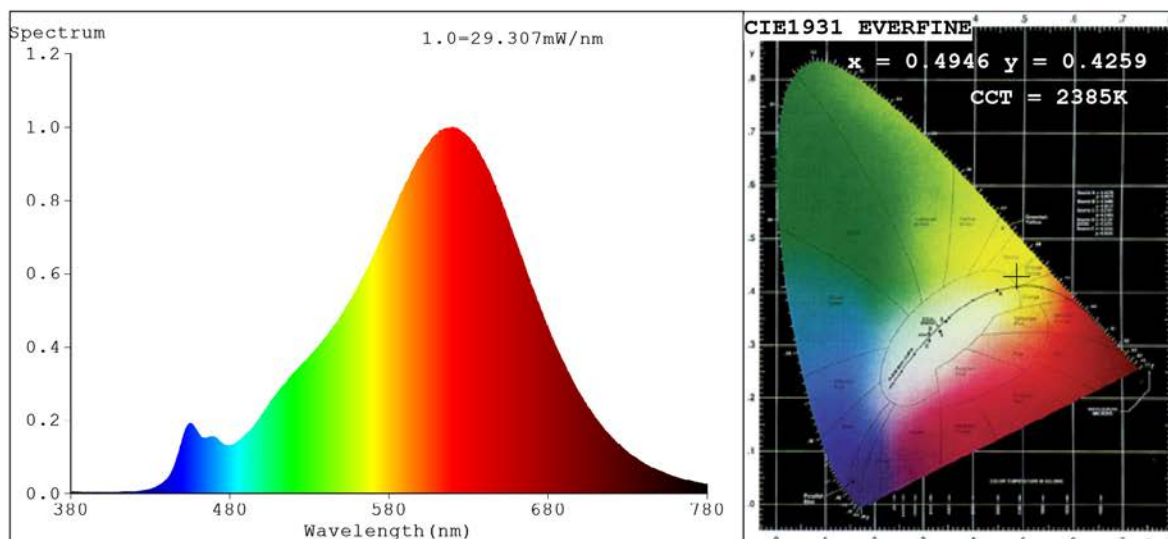


## Spectrum Test Report



### Color Parameters:

Chromaticity Coordinate:  $x=0.4946$   $y=0.4259$   $u'=0.2778$   $v'=0.5382$   
 CCT=2385K (Duv=0.0035) Dominant WL:  $\lambda_d = 585.0\text{nm}$  Purity=76.3%  
 Ratio: R=28.4% G=69.9% B=1.7%; Peak WL:  $\lambda_p = 620.5\text{nm}$  FWHM=123.7nm  
 Render Index: Ra=86.1 CRI=82.0 TM30: Rf=85 Rg=92  
 R1 =85 R2 =93 R3 =98 R4 =84 R5 =84 R6 =93 R7 =86  
 R8 =67 R9 =30 R10=84 R11=83 R12=77 R13=86 R14=100 R15=78

### Photo Parameters:

Flux = 1243 lm Eff. : 89.64 lm/W Fe = 4.191 W Scotopic: 1319.2 S/P: 1.0616

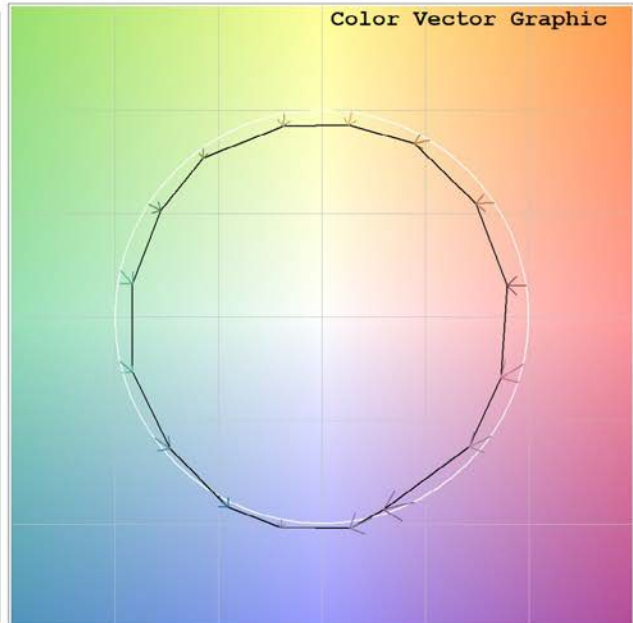
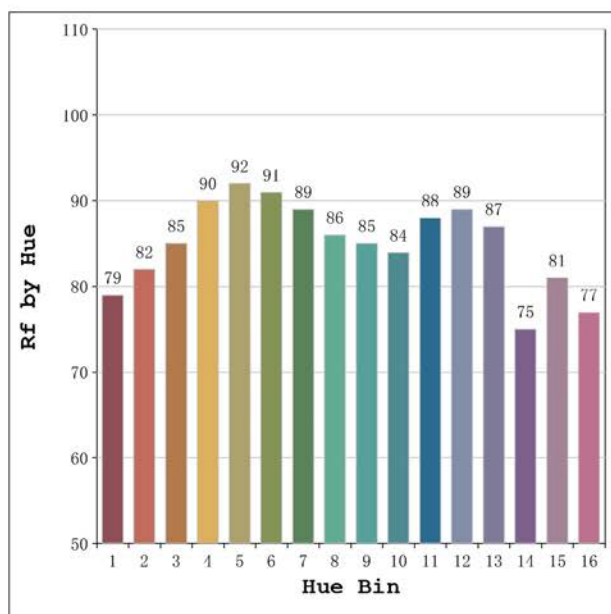
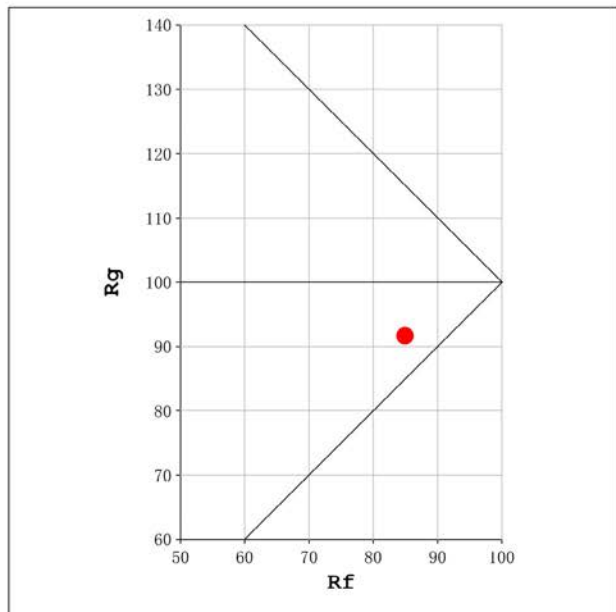
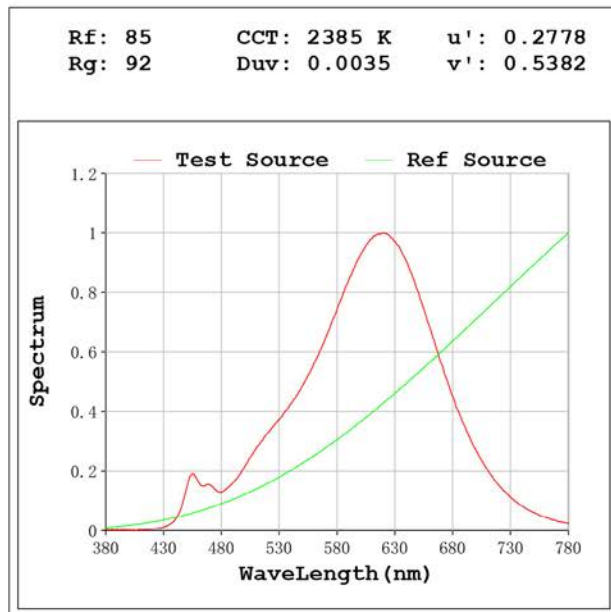
### Electrical parameters:

V = 230.17 V I = 0.06665 A P = 13.86 W PF = 0.9037

Status: Integral T = 1000 ms Ip = 57218 (87%)

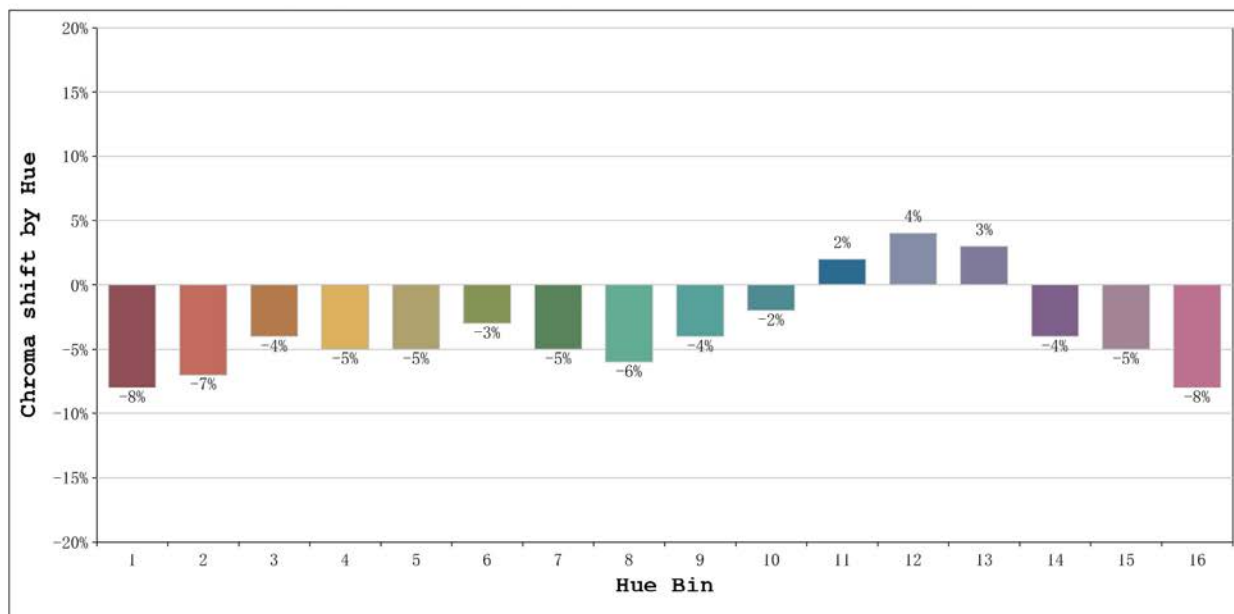
Model: Infinity 14 2300K  
 Tester: Sergio Carneros  
 Temperature: 25Deg  
 Manufacturer: Luz Negra

Number: 34.033  
 Date: 2023-02-28 16:00:47  
 Humidity: 57%  
 Remarks: 100cm de tira flexible



Model:Infinity 14 2300K  
 Tester:Sergio Carneros  
 Temperature:25Deg  
 Manufacturer:Luz Negra

Number: 34.033  
 Date:2023-02-28 16:00:47  
 Humidity:57%  
 Remarks:100cm de tira flexible



			Graphic shift(%)	
Hue Bin	Hue Angle	Rf	Chroma	Hue
1	0.0° - 22.5°	79	-8	1
2	22.5° - 45.0°	82	-7	4
3	45.0° - 67.5°	85	-4	5
4	67.5° - 90.0°	90	-5	0
5	90.0° - 112.5°	92	-5	2
6	112.5° - 135.0°	91	-3	2
7	135.0° - 157.5°	89	-5	0
8	157.5° - 180.0°	86	-6	5
9	180.0° - 202.5°	85	-4	6
10	202.5° - 225.0°	84	-2	8
11	225.0° - 247.5°	88	2	7
12	247.5° - 270.0°	89	4	0
13	270.0° - 292.5°	87	3	-10
14	292.5° - 315.0°	75	-4	-13
15	315.0° - 337.5°	81	-5	-9
16	337.5° - 360.0°	77	-8	-8

Model:Infinity 14 2300K  
 Tester:Sergio Carneros  
 Temperature:25Deg  
 Manufacturer:Luz Negra

Number: 34.033  
 Date:2023-02-28 16:00:47  
 Humidity:57%  
 Remarks:100cm de tira flexible