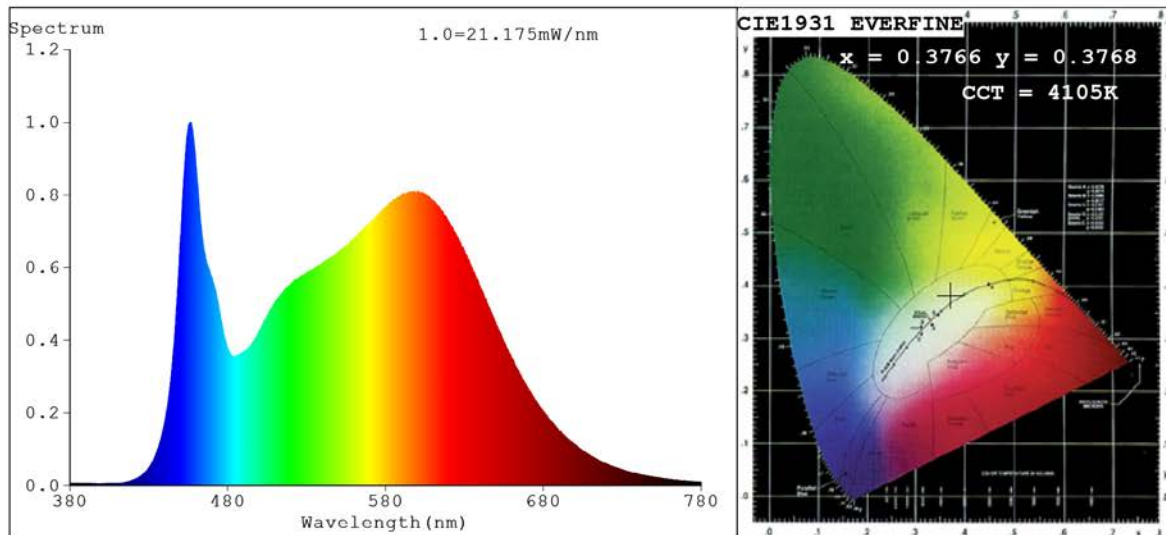


Spectrum Test Report



Color Parameters:

Chromaticity Coordinate: $x=0.3766$ $y=0.3768$ $u'=0.2226$ $v'=0.5010$
 CCT=4105K (Duv=0.0012) Dominant WL:Ld =578.0nm Purity=26.1%
 Ratio:R=18.6% G=76.8% B=4.6%; Peak WL:Lp=456.6nm FWHM=26.2nm
 Render Index:Ra=86.6 CRI=81.7 TM30:Rf=83 Rg=93
 R1 =87 R2 =96 R3 =95 R4 =83 R5 =86 R6 =92 R7 =85
 R8 =69 R9 =26 R10=89 R11=83 R12=64 R13=90 R14=98 R15=81

Photo Parameters:

Flux = 1003 lm Eff. : 112.30 lm/W Fe = 3.116 W Scotopic:1825.3 S/P:1.8201

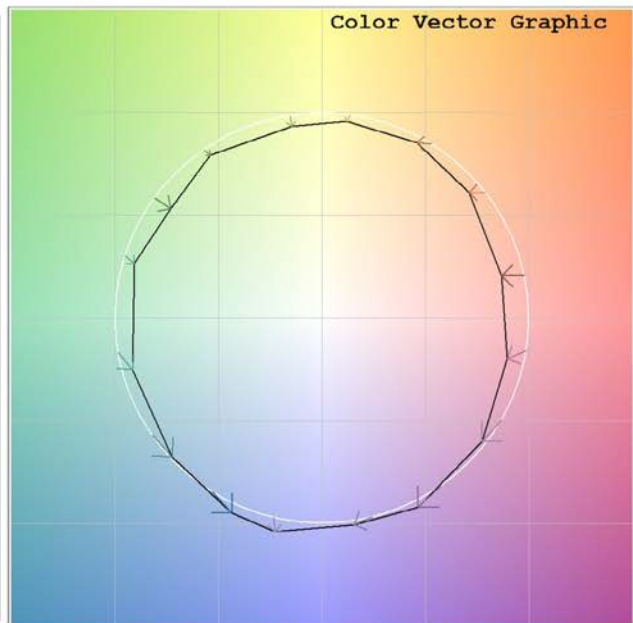
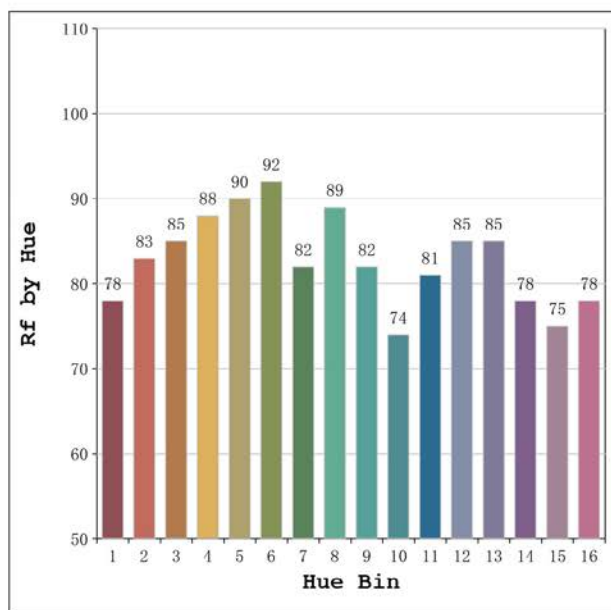
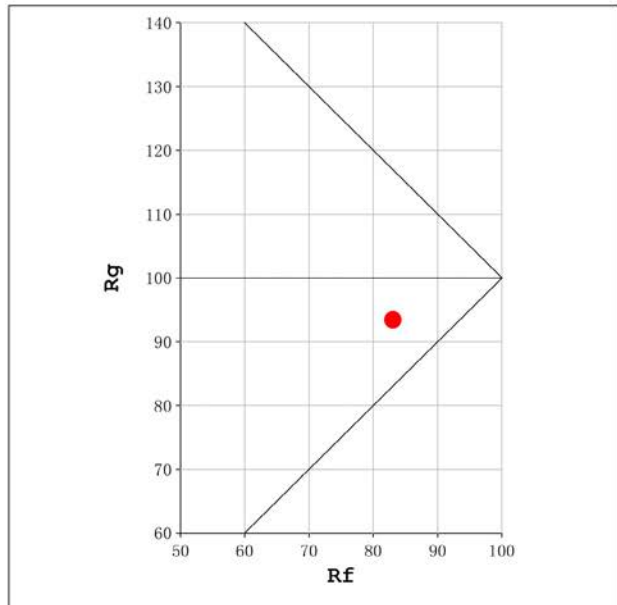
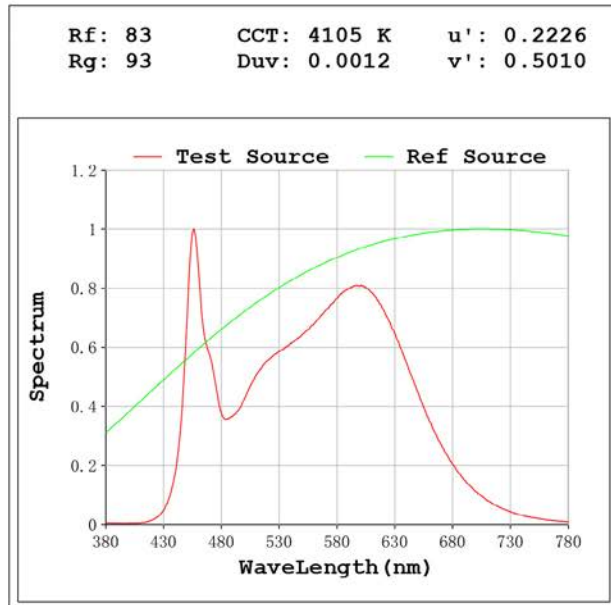
Electrical parameters:

V = 230.06 V I = 0.04271 A P = 8.930 W PF = 0.9088

Status: Integral T = 1397 ms Ip = 51960 (79%)

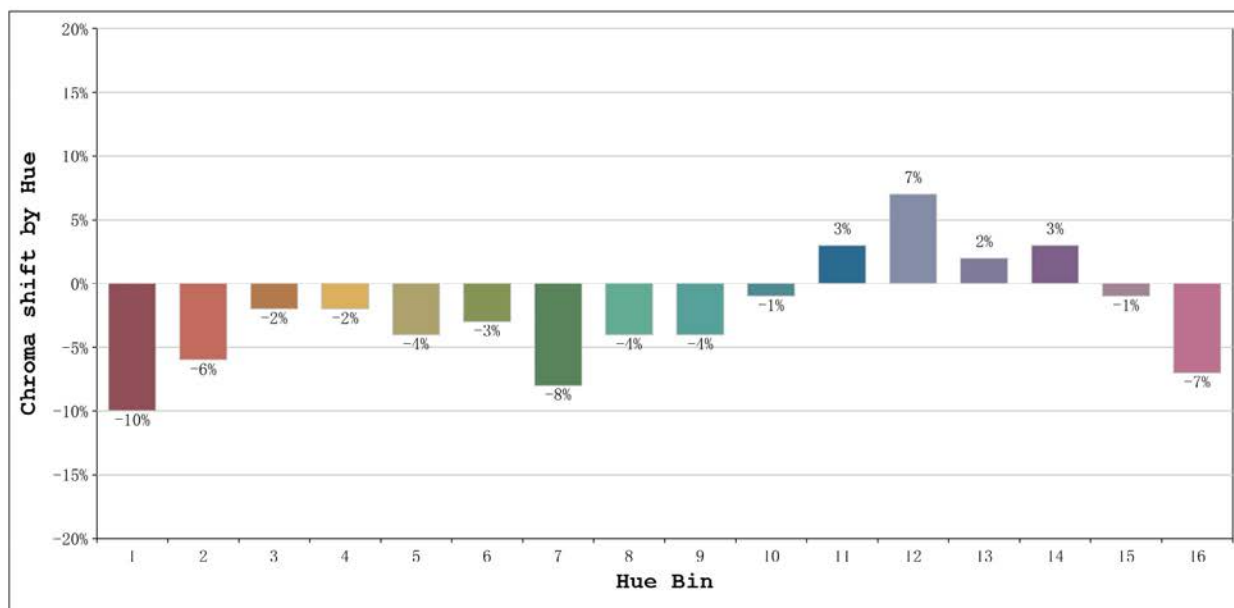
Model:Ecoled Infinity 9 4000K
 Tester:Sergio Carneros
 Temperature:20Deg
 Manufacturer:Luz Negra

Number: 34.032
 Date:2023-02-28 16:16:58
 Humidity:50%
 Remarks:100cm de tira flexible



Model:Ecoled Infinity 9 4000K
 Tester:Sergio Carneros
 Temperature:20Deg
 Manufacturer:Luz Negra

Number: 34.032
 Date:2023-02-28 16:16:58
 Humidity:50%
 Remarks:100cm de tira flexible



			Graphic shift(%)	
Hue Bin	Hue Angle	Rf	Chroma	Hue
1	0.0° - 22.5°	78	-10	2
2	22.5° - 45.0°	83	-6	5
3	45.0° - 67.5°	85	-2	6
4	67.5° - 90.0°	88	-2	1
5	90.0° - 112.5°	90	-4	0
6	112.5° - 135.0°	92	-3	0
7	135.0° - 157.5°	82	-8	0
8	157.5° - 180.0°	89	-4	3
9	180.0° - 202.5°	82	-4	10
10	202.5° - 225.0°	74	-1	14
11	225.0° - 247.5°	81	3	13
12	247.5° - 270.0°	85	7	2
13	270.0° - 292.5°	85	2	-8
14	292.5° - 315.0°	78	3	-14
15	315.0° - 337.5°	75	-1	-13
16	337.5° - 360.0°	78	-7	-5

Model:Ecoled Infinity 9 4000K
 Tester:Sergio Carneros
 Temperature:20Deg
 Manufacturer:Luz Negra

Number: 34.032
 Date:2023-02-28 16:16:58
 Humidity:50%
 Remarks:100cm de tira flexible