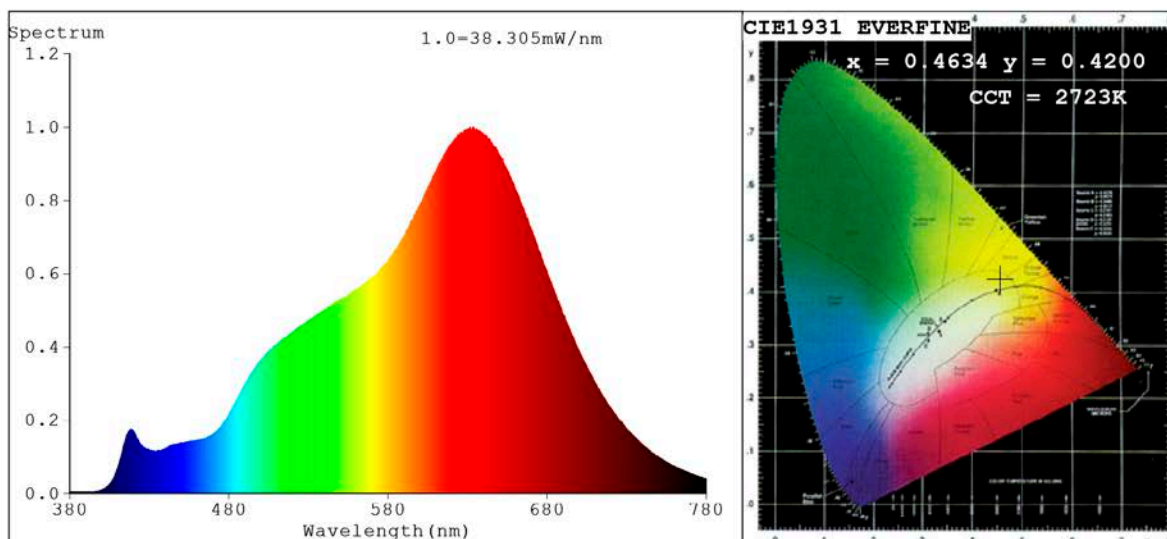


Spectrum Test Report



Color Parameters:

Chromaticity Coordinate: $x=0.4634$ $y=0.4200$ $u'=0.2606$ $v'=0.5314$
 CCT=2723K (Duv=0.0031) Dominant WL: $\lambda_d = 583.1\text{nm}$ Purity=65.2%
 Ratio: R=27.0% G=70.2% B=2.7%; Peak WL: $\lambda_p = 633.2\text{nm}$ FWHM=150.0nm
 Render Index: Ra=97.6 CRI=96.3 TM30: Rf=94 Rg=97
 R1 =99 R2 =99 R3 =97 R4 =96 R5 =98 R6 =97 R7 =98
 R8 =96 R9 =88 R10=98 R11=92 R12=93 R13=99 R14=98 R15=97

Photo Parameters:

Flux = 1645 lm Eff. : 79.19 lm/W Fe = 6.239 W Scotopic: 2202.2 S/P: 1.3387

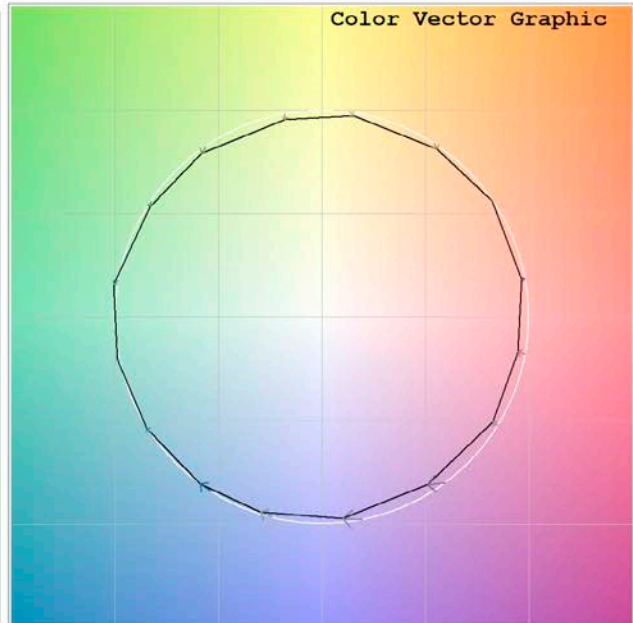
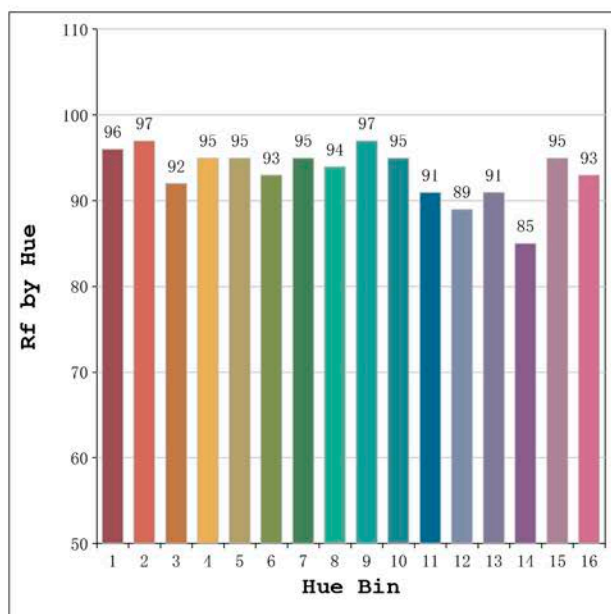
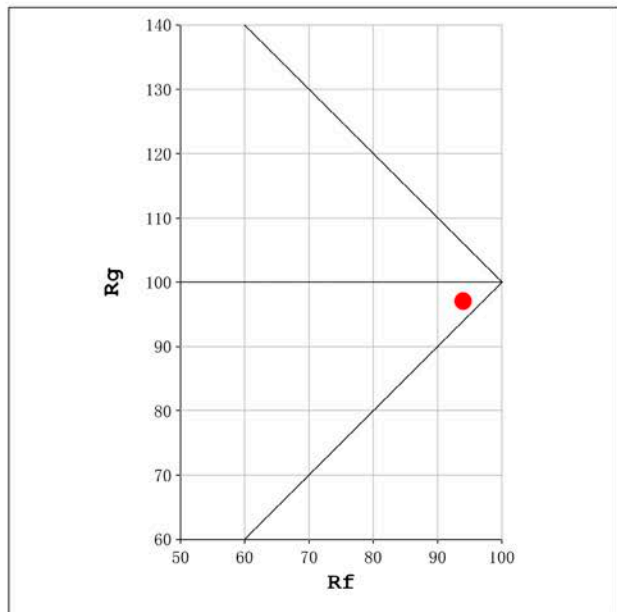
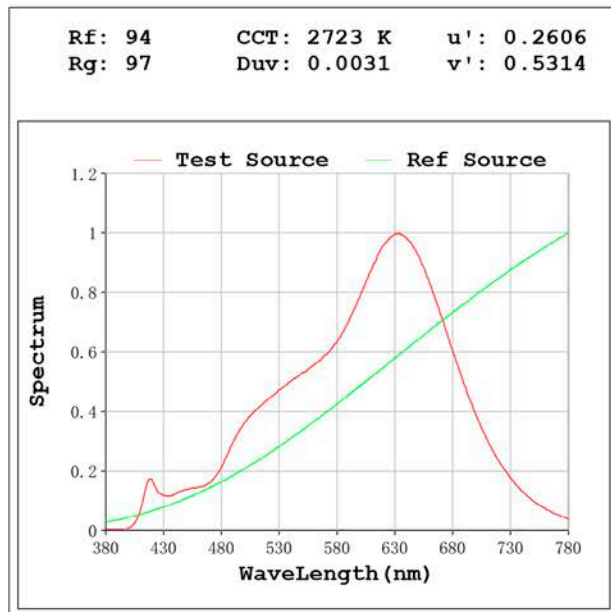
Electrical parameters:

V = 23.998 V I = 0.8656 A P = 20.77 W PF = 1.000

Status: Integral T = 488 ms Ip = 33706 (51%)

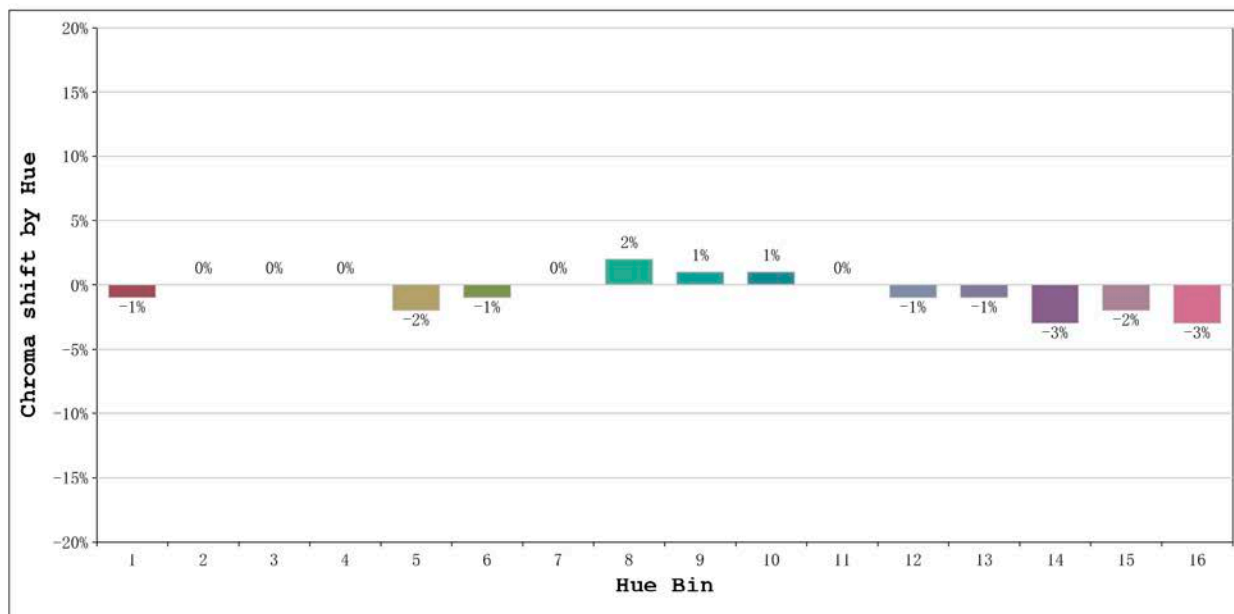
Model: Ecoled Málaga 2700K
 Tester: Sergio Carneros
 Temperature: 20Deg
 Manufacturer: Luz Negra

Number: 33.199
 Date: 2022-06-07 15:34:16
 Humidity: 57%
 Remarks: 100cm de tira flexible



Model:Ecoled Málaga 2700K
 Tester:Sergio Carneros
 Temperature:20Deg
 Manufacturer:Luz Negra

Number: 33.199
 Date:2022-06-07 15:34:16
 Humidity:57%
 Remarks:100cm de tira flexible



			Graphic shift(%)	
Hue Bin	Hue Angle	Rf	Chroma	Hue
1	0.0° - 22.5°	96	-1	0
2	22.5° - 45.0°	97	0	0
3	45.0° - 67.5°	92	0	-2
4	67.5° - 90.0°	95	0	-1
5	90.0° - 112.5°	95	-2	0
6	112.5° - 135.0°	93	-1	3
7	135.0° - 157.5°	95	0	2
8	157.5° - 180.0°	94	2	3
9	180.0° - 202.5°	97	1	0
10	202.5° - 225.0°	95	1	-2
11	225.0° - 247.5°	91	0	-5
12	247.5° - 270.0°	89	-1	-5
13	270.0° - 292.5°	91	-1	-8
14	292.5° - 315.0°	85	-3	-7
15	315.0° - 337.5°	95	-2	0
16	337.5° - 360.0°	93	-3	0

Model:Ecoledd Málaga 2700K
Tester:Sergio Carneros
Temperature:20Deg
Manufacturer:Luz Negra

Number: 33.199
Date:2022-06-07 15:34:16
Humidity:57%
Remarks:100cm de tira flexible