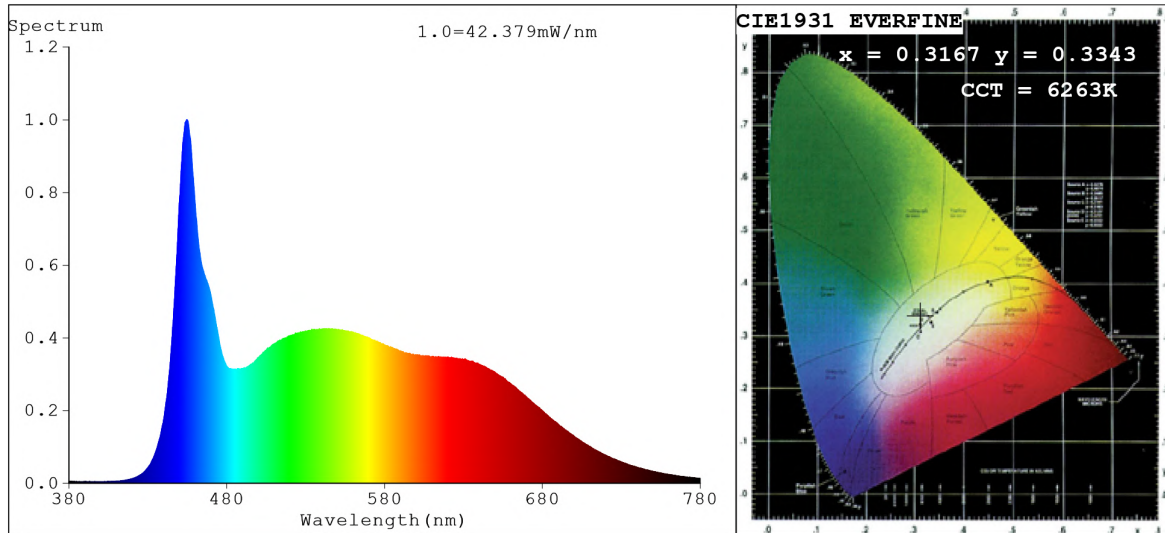


Spectrum Test Report



Color Parameters:

Chromaticity Coordinate: $x=0.3167$ $y=0.3343$ $u'=0.1986$ $v'=0.4717$
 CCT=6263K (Duv=0.0039) Dominant WL:Ld =492.4nm Purity=5.6%
 Ratio:R=15.3% G=77.9% B=6.8%; Peak WL:Lp=454.7nm FWHM=23.9nm
 Render Index:Ra=93.7 CRI=91.3 TM30:Rf=89 Rg=98
 R1 =95 R2 =99 R3 =97 R4 =89 R5 =92 R6 =94 R7 =93
 R8 =91 R9 =83 R10=95 R11=91 R12=64 R13=97 R14=99 R15=93

Photo Parameters:

Flux = 1201 lm Eff. : 100.21 lm/W Fe = 4.357 W Scotopic:2864.2 S/P:2.3839

Electrical parameters:

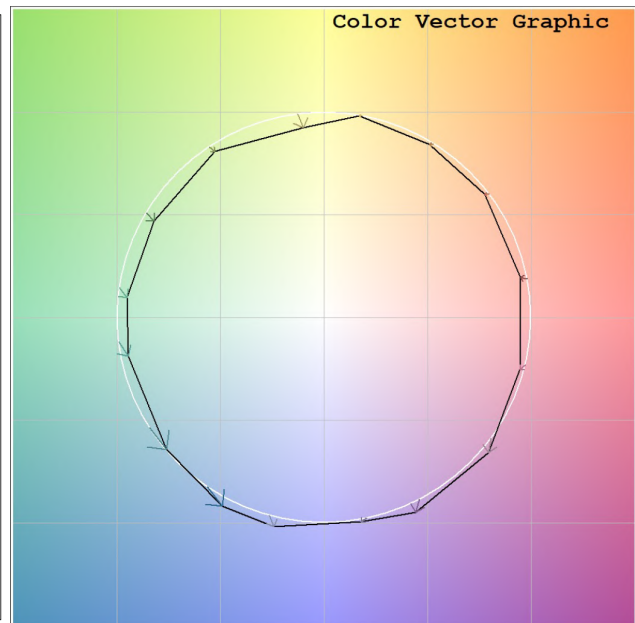
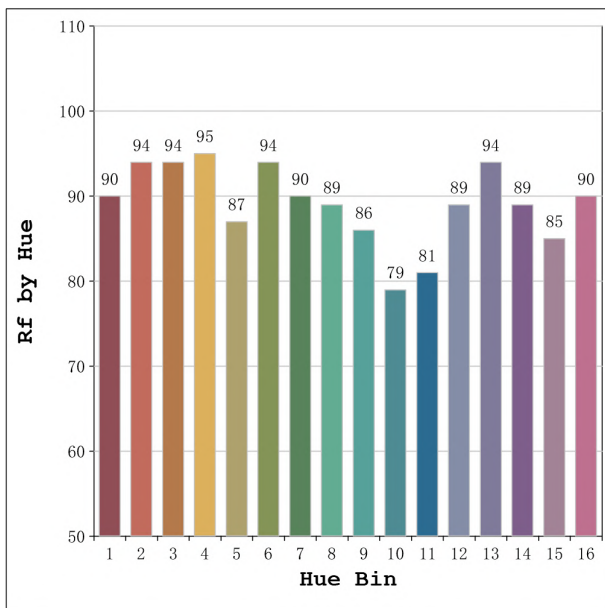
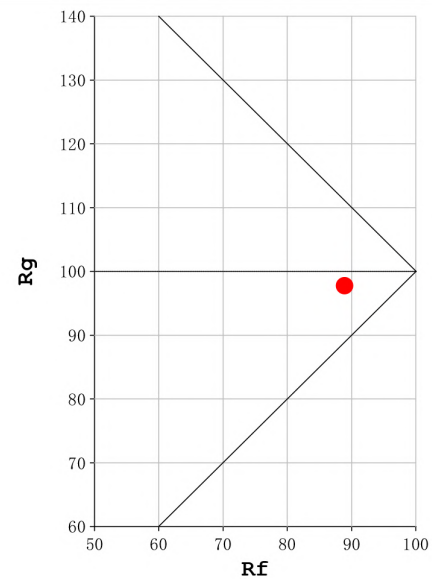
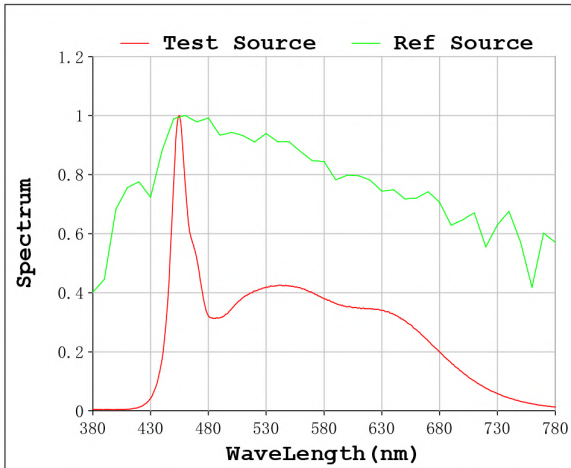
V = 23.998 V I = 0.4996 A P = 11.99 W PF = 1.000

Status: Integral T = 1000 ms Ip = 58844 (90%)

Model:Ecoled Free Cut 6000K
 Tester:Sergio Carneros
 Temperature:20Deg
 Manufacturer:Luz Negra

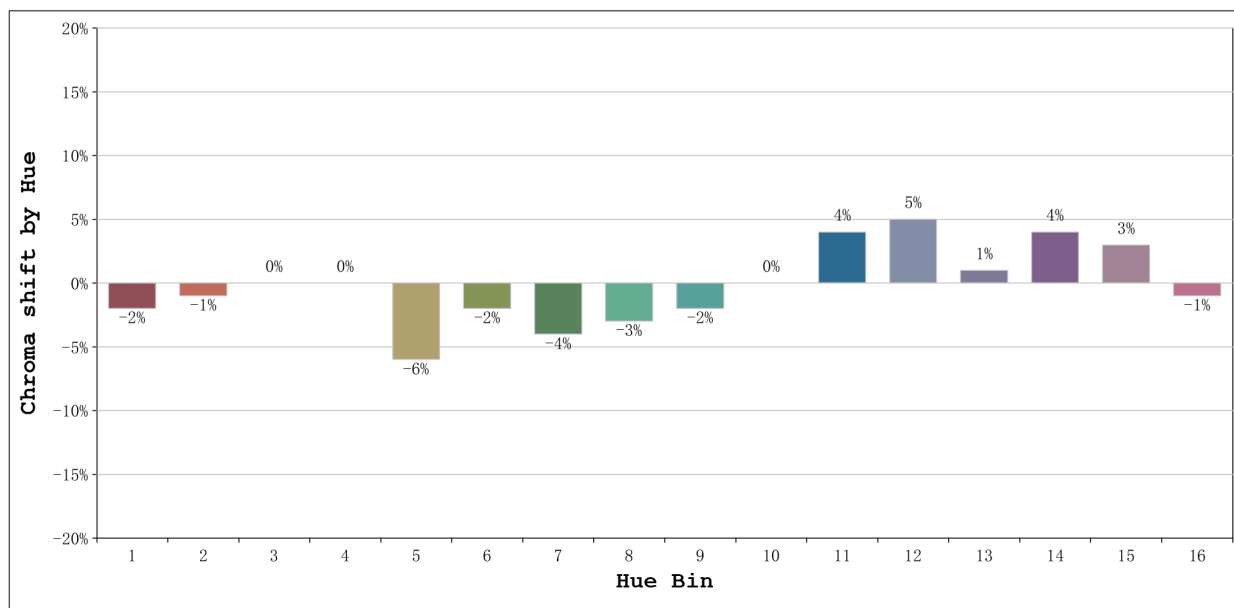
Number: 34.043
 Date:2023-12-13 09:33:41
 Humidity:50%
 Remarks:100cm de tira flexible

Rf: 89 **CCT: 6263 K** **u': 0.1986**
Rg: 98 **Duv: 0.0039** **v': 0.4717**



Model:Ecoled Free Cut 6000K
 Tester:Sergio Carneros
 Temperature:20Deg
 Manufacturer:Luz Negra

Number: 34.043
 Date:2023-12-13 09:33:41
 Humidity:50%
 Remarks:100cm de tira flexible



Hue Bin	Hue Angle	Rf	Graphic shift(%)	
			Chroma	Hue
1	0.0° - 22.5°	90	-2	1
2	22.5° - 45.0°	94	-1	1
3	45.0° - 67.5°	94	0	1
4	67.5° - 90.0°	95	0	1
5	90.0° - 112.5°	87	-6	-1
6	112.5° - 135.0°	94	-2	0
7	135.0° - 157.5°	90	-4	1
8	157.5° - 180.0°	89	-3	4
9	180.0° - 202.5°	86	-2	8
10	202.5° - 225.0°	79	0	13
11	225.0° - 247.5°	81	4	11
12	247.5° - 270.0°	89	5	3
13	270.0° - 292.5°	94	1	-2
14	292.5° - 315.0°	89	4	-4
15	315.0° - 337.5°	85	3	-6
16	337.5° - 360.0°	90	-1	-2

Model:Ecoled Free Cut 6000K
 Tester:Sergio Carneros
 Temperature:20Deg
 Manufacturer:Luz Negra

Number: 34.043
 Date:2023-12-13 09:33:41
 Humidity:50%
 Remarks:100cm de tira flexible