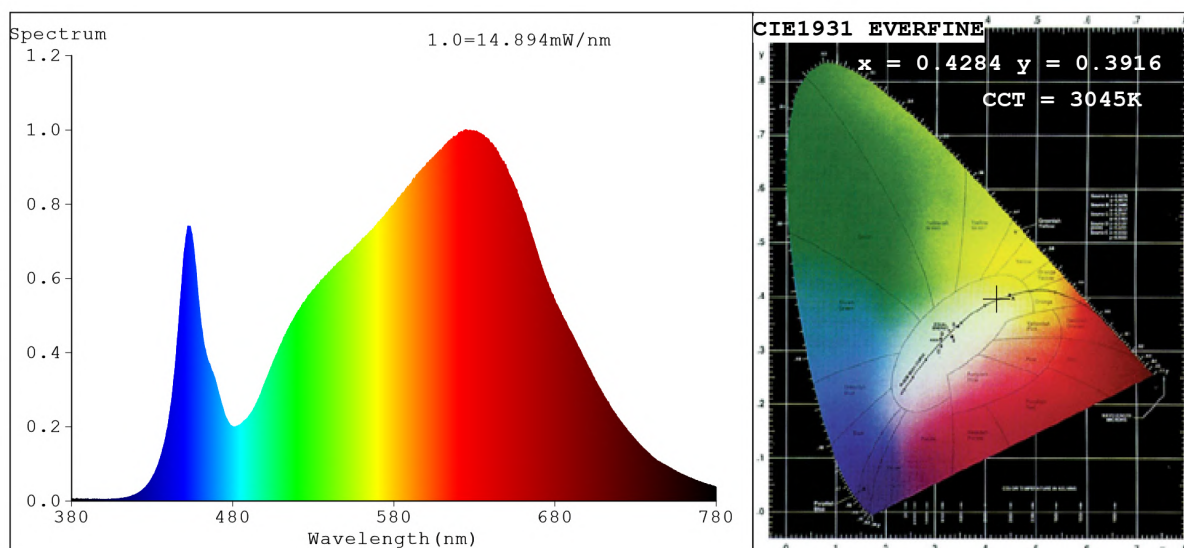


Spectrum Test Report



Color Parameters:

Chromaticity Coordinate: $x=0.4284$ $y=0.3916$ / $u'=0.2504$ $v'=0.5151$
 CCT=3045K (Duv=-0.0039) Dominant WL: $\lambda_d = 584.2\text{nm}$ Purity=46.1%
 Ratio: R=24.1% G=73.1% B=2.8%; Peak WL: $\lambda_p = 624.7\text{nm}$ FWHM=165.5nm
 Render Index: Ra=92.7 CRI=89.7 TM30: Rf=89 Rg=102
 R1 =94 R2 =96 R3 =95 R4 =92 R5 =93 R6 =93 R7 =93
 R8 =86 R9 =68 R10=88 R11=91 R12=76 R13=94 R14=96 R15=92

Photo Parameters:

Flux = 748.8 lm Eff. : 63.15 lm/W Fe = 2.670 W Scotopic: 1069.3 S/P: 1.4281

Electrical parameters:

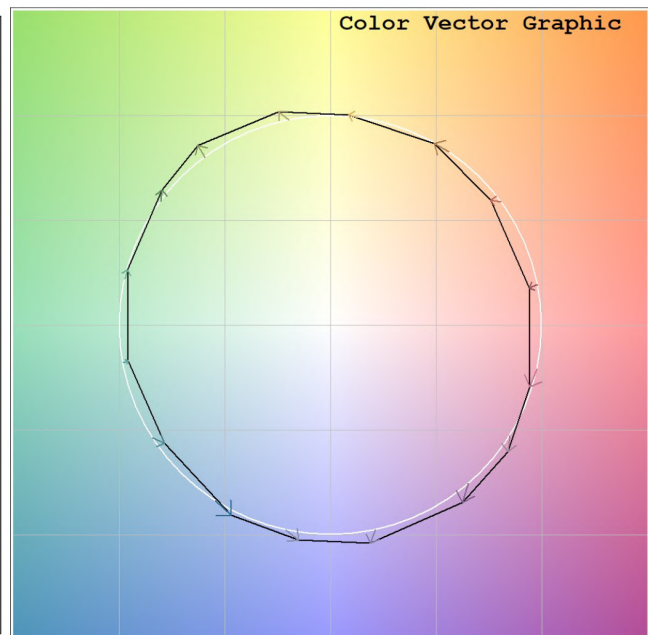
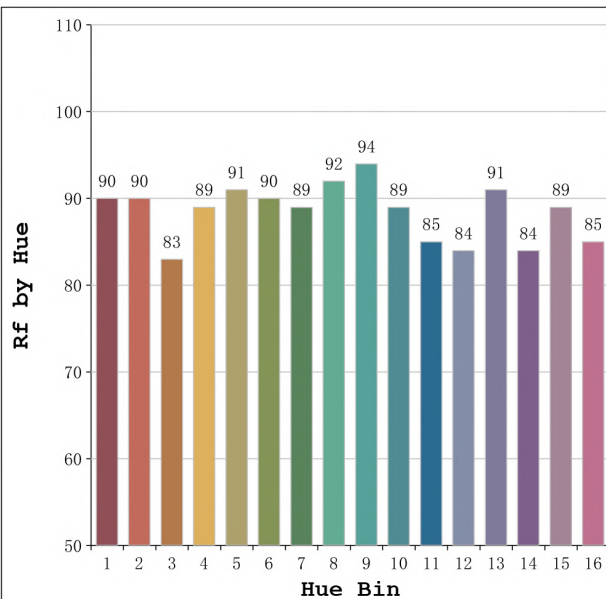
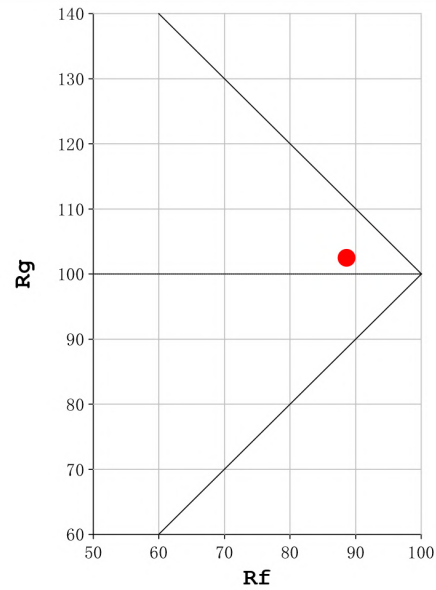
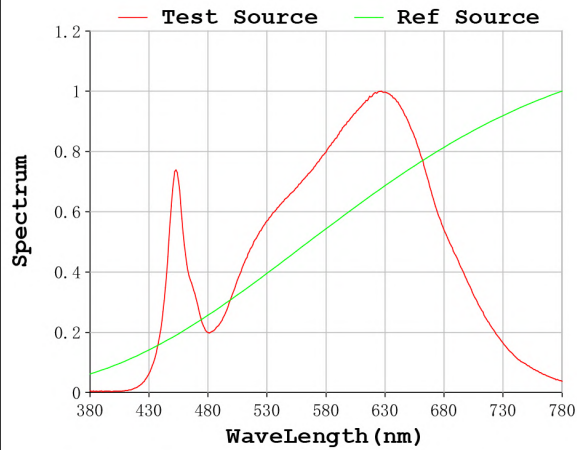
V = 23.998 V I = 0.4941 A P = 11.86 W PF = 1.000

Status: Integral T = 2000 ms Ip = 55379 (85%)

Model: Ecoled Cairo 3000K
 Tester: Sergio Carneros
 Temperature: 27Deg
 Manufacturer: Luz Negra S.L

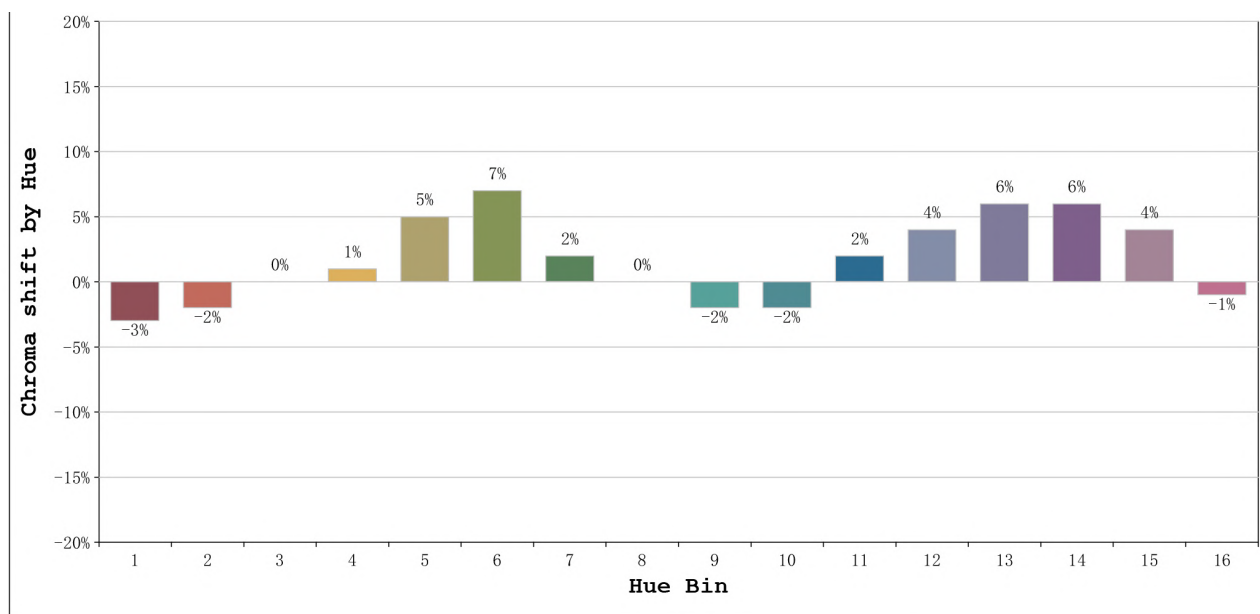
Number: 10.240
 Date: 2023-11-17 12:17:09
 Humidity: 40%
 Remarks: 100cm de néon

Rf: 89 **CCT: 3045 K** **u': 0.2504**
Rg: 102 **Duv: -0.0039** **v': 0.5151**



Model:Ecoled Cairo 3000K
 Tester:Sergio Carneros
 Temperature:27Deg
 Manufacturer:Luz Negra S.L

Number: 10.240
 Date:2023-11-17 12:17:09
 Humidity:40%
 Remarks:100cm de néon



			Graphic shift(%)	
Hue Bin	Hue Angle	Rf	Chroma	Hue
1	0.0° - 22.5°	90	-3	0
2	22.5° - 45.0°	90	-2	3
3	45.0° - 67.5°	83	0	8
4	67.5° - 90.0°	89	1	5
5	90.0° - 112.5°	91	5	4
6	112.5° - 135.0°	90	7	0
7	135.0° - 157.5°	89	2	-4
8	157.5° - 180.0°	92	0	-4
9	180.0° - 202.5°	94	-2	0
10	202.5° - 225.0°	89	-2	5
11	225.0° - 247.5°	85	2	10
12	247.5° - 270.0°	84	4	7
13	270.0° - 292.5°	91	6	-3
14	292.5° - 315.0°	84	6	-6
15	315.0° - 337.5°	89	4	-6
16	337.5° - 360.0°	85	-1	-8

Model:Ecoled Cairo 3000K
 Tester:Sergio Carneros
 Temperature:27Deg
 Manufacturer:Luz Negra S.L

Number: 10.240
 Date:2023-11-17 12:17:09
 Humidity:40%
 Remarks:100cm de néon