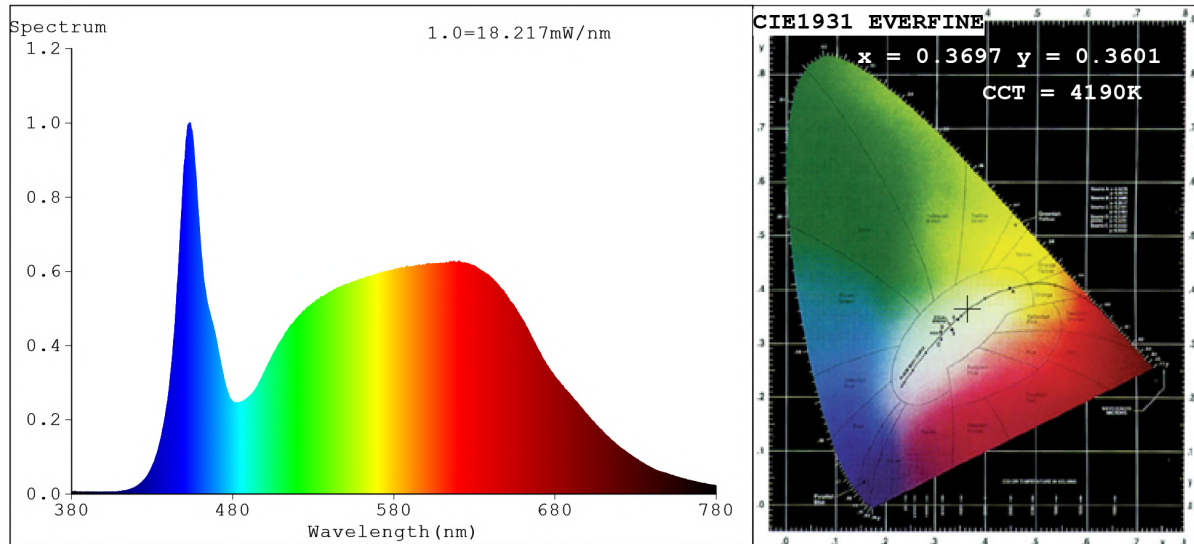


Spectrum Test Report



Color Parameters:

Chromaticity Coordinate: $x=0.3697$ $y=0.3601$ $u'=0.2247$ $v'=0.4924$
 CCT=4190K (Duv=-0.0048) Dominant WL:Ld =581.9nm Purity=19.0%
 Ratio:R=19.4% G=76.3% B=4.3%; Peak WL:Lp=453.6nm FWHM=20.2nm
 Render Index:Ra=92.8 CRI=89.3 TM30:Rf=88 Rg=101
 R1 =94 R2 =96 R3 =94 R4 =92 R5 =92 R6 =91 R7 =94
 R8 =89 R9 =73 R10=88 R11=91 R12=66 R13=95 R14=96 R15=94

Photo Parameters:

Flux = 724.0 lm Eff. : 60.99 lm/W Fe = 2.535 W Scotopic:1327.9 S/P:1.8341

Electrical parameters:

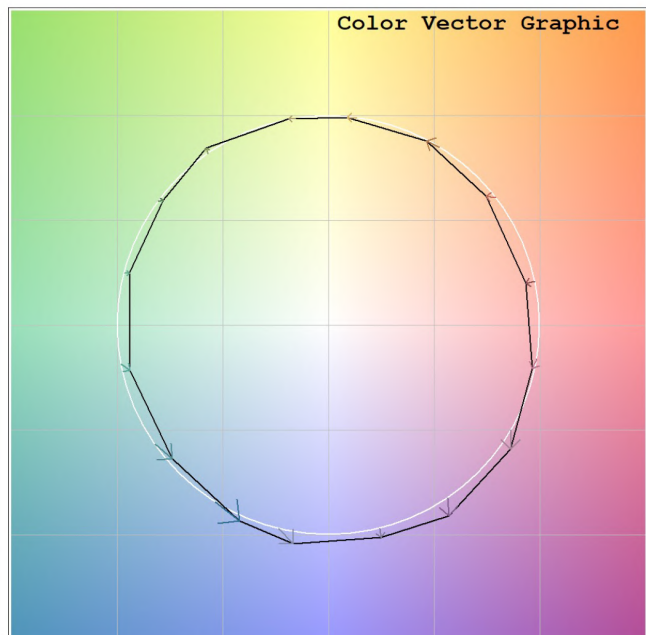
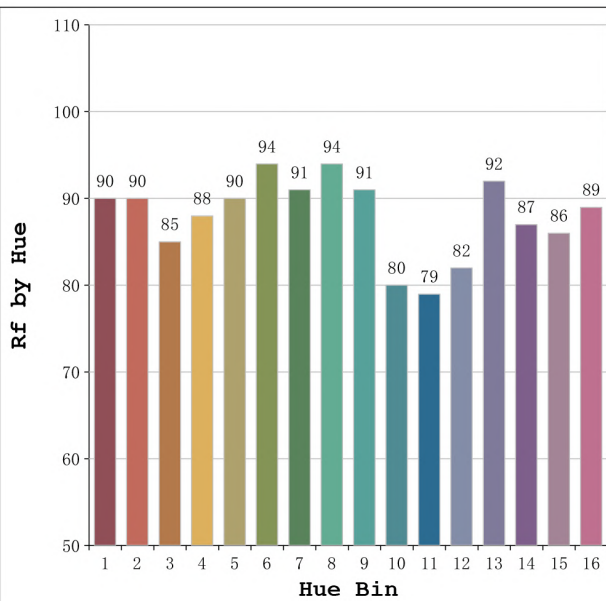
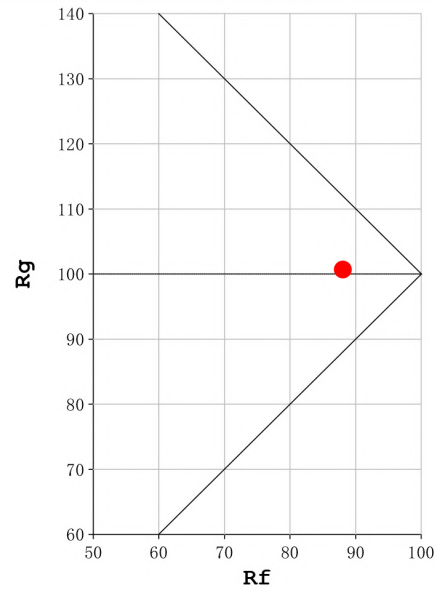
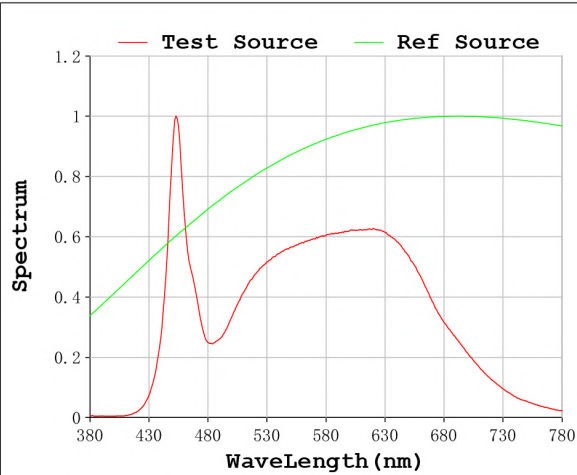
V = 23.998 V I = 0.4947 A P = 11.87 W PF = 1.000

Status: Integral T = 2000 ms Ip = 49209 (75%)

Model:Ecoled Kenya 4000K
 Tester:Sergio Carneros
 Temperature:27Deg
 Manufacturer:Luz Negra S.L

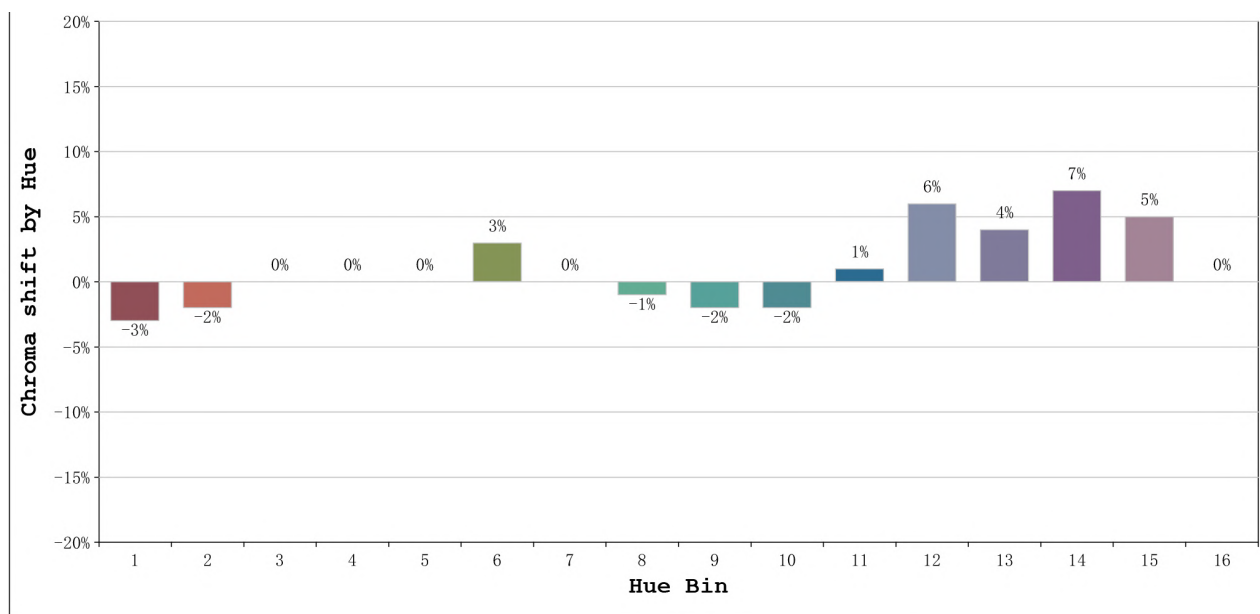
Number: 10.245
 Date:2023-11-17 11:47:37
 Humidity:40%
 Remarks:100cm de néon

Rf: 88 **CCT: 4190 K** **u': 0.2247**
Rg: 101 **Duv: -0.0048** **v': 0.4924**



Model:Ecoled Kenya 4000K
 Tester:Sergio Carneros
 Temperature:27Deg
 Manufacturer:Luz Negra S.L

Number: 10.245
 Date:2023-11-17 11:47:37
 Humidity:40%
 Remarks:100cm de néon



			Graphic shift(%)	
Hue Bin	Hue Angle	Rf	Chroma	Hue
1	0.0° - 22.5°	90	-3	0
2	22.5° - 45.0°	90	-2	3
3	45.0° - 67.5°	85	0	7
4	67.5° - 90.0°	88	0	4
5	90.0° - 112.5°	90	0	3
6	112.5° - 135.0°	94	3	0
7	135.0° - 157.5°	91	0	-1
8	157.5° - 180.0°	94	-1	0
9	180.0° - 202.5°	91	-2	4
10	202.5° - 225.0°	80	-2	10
11	225.0° - 247.5°	79	1	15
12	247.5° - 270.0°	82	6	8
13	270.0° - 292.5°	92	4	0
14	292.5° - 315.0°	87	7	-3
15	315.0° - 337.5°	86	5	-7
16	337.5° - 360.0°	89	0	-4

Model:Ecoled Kenya 4000K
 Tester:Sergio Carneros
 Temperature:27Deg
 Manufacturer:Luz Negra S.L

Number: 10.245
 Date:2023-11-17 11:47:37
 Humidity:40%
 Remarks:100cm de néon