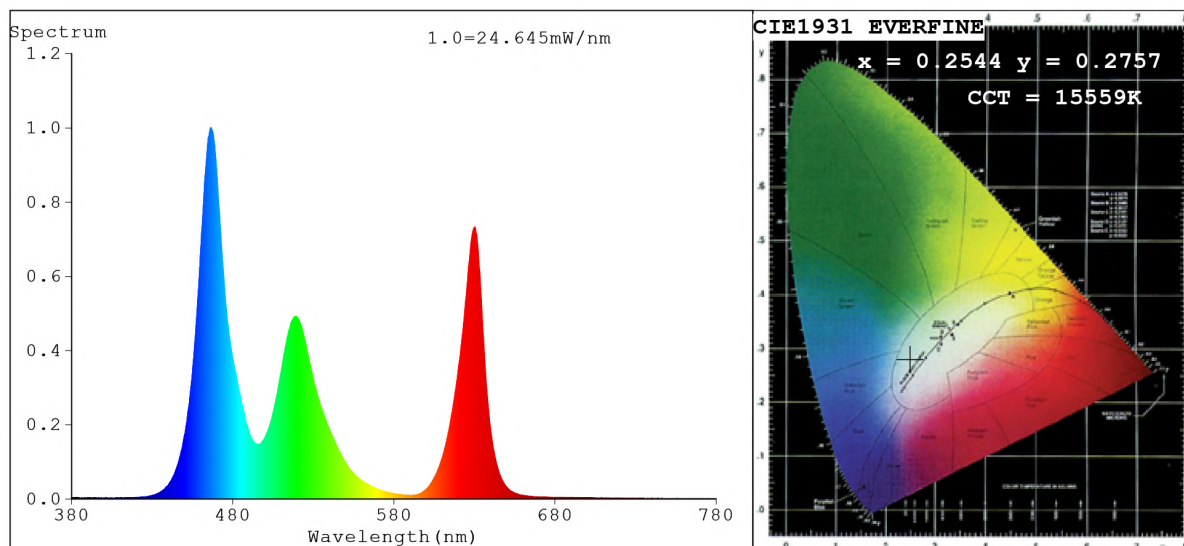


## Spectrum Test Report



### Color Parameters:

Chromaticity Coordinate:  $x=0.2544$   $y=0.2757$  /  $u'=0.1754$   $v'=0.4279$   
 CCT=15559K (Duv=0.0106) Dominant WL:Ld =481.6nm Purity=31.7%  
 Ratio:R=22.6% G=64.7% B=12.7%; Peak WL:Lp=466.3nm FWHM=18.6nm  
 Render Index:Ra=44.6 CRI=40.7 TM30:Rf=40 Rg=109  
 R1 =28 R2 =55 R3 =70 R4 =49 R5 =51 R6 =51 R7 =52  
 R8 =0 R9 =0 R10=0 R11=44 R12=58 R13=31 R14=79 R15=10

### Photo Parameters:

Flux = 314.4 lm Eff. : 25.05 lm/W Fe = 1.352 W Scotopic:1236.9 S/P:3.9344

### Electrical parameters:

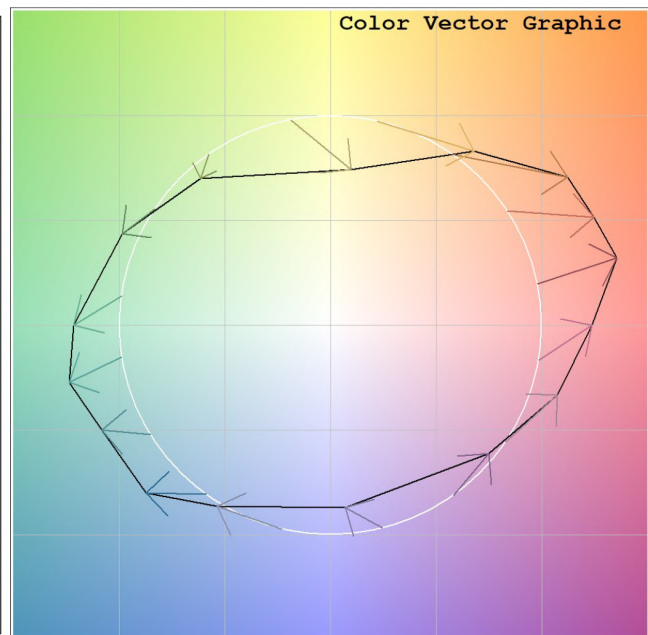
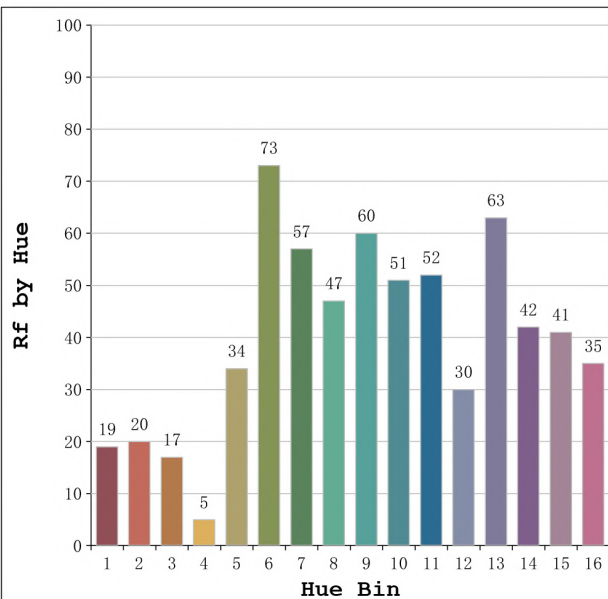
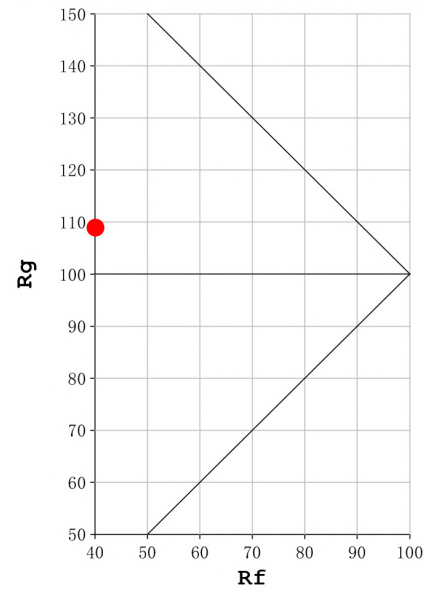
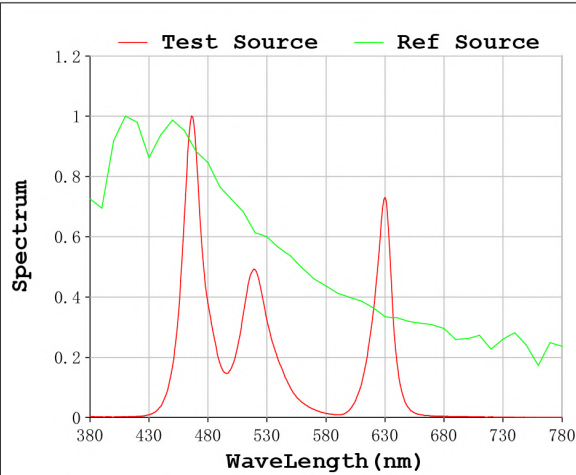
V = 23.998 V I = 0.5230 A P = 12.55 W PF = 1.000

Status: Integral T = 1000 ms Ip = 38032 (58%)

Model:Ecoled Cairo RGB  
 Tester:Sergio Carneros  
 Temperature:27Deg  
 Manufacturer:Luz Negra S.L

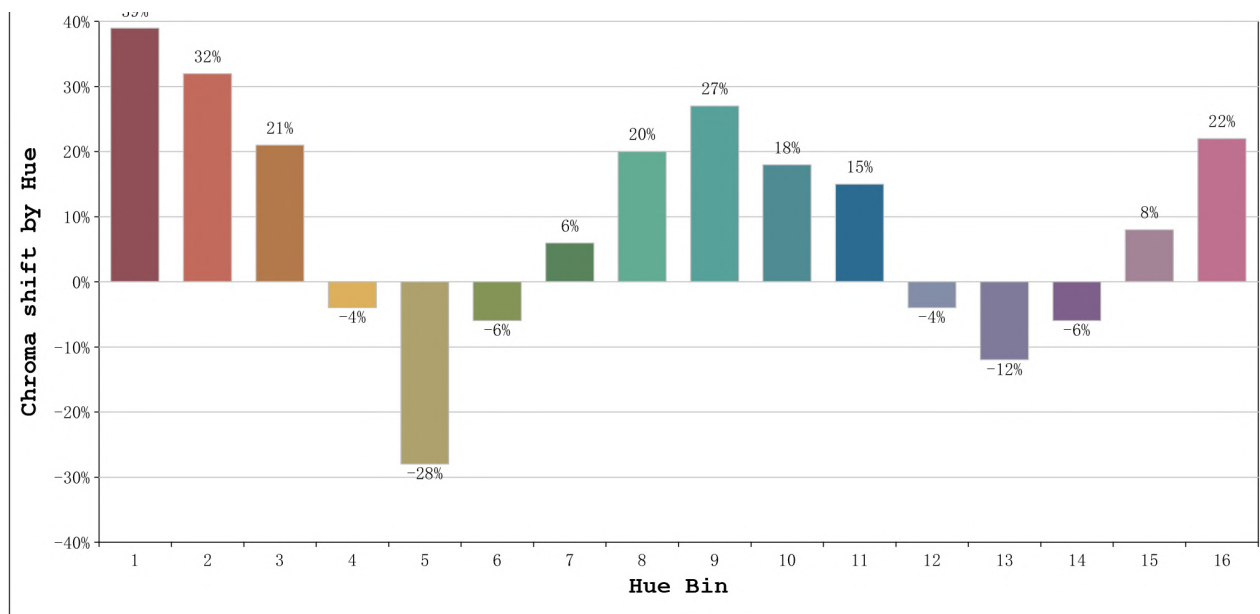
Number: 10.243  
 Date:2023-11-17 12:46:04  
 Humidity:40%  
 Remarks:100cm de néon (R+G+B)

**Rf: 40**      **CCT: 15559 K**      **u': 0.1754**  
**Rg: 109**      **Duv: 0.0106**      **v': 0.4279**



Model:Ecoled Cairo RGB  
 Tester:Sergio Carneros  
 Temperature:27Deg  
 Manufacturer:Luz Negra S.L

Number: 10.243  
 Date:2023-11-17 12:46:04  
 Humidity:40%  
 Remarks:100cm de néon (R+G+B)



			Graphic shift(%)	
Hue Bin	Hue Angle	Rf	Chroma	Hue
1	0.0° - 22.5°	19	39	5
2	22.5° - 45.0°	20	32	-24
3	45.0° - 67.5°	17	21	-50
4	67.5° - 90.0°	5	-4	-46
5	90.0° - 112.5°	34	-28	-23
6	112.5° - 135.0°	73	-6	10
7	135.0° - 157.5°	57	6	19
8	157.5° - 180.0°	47	20	18
9	180.0° - 202.5°	60	27	7
10	202.5° - 225.0°	51	18	-14
11	225.0° - 247.5°	52	15	-23
12	247.5° - 270.0°	30	-4	-31
13	270.0° - 292.5°	63	-12	-14
14	292.5° - 315.0°	42	-6	25
15	315.0° - 337.5°	41	8	32
16	337.5° - 360.0°	35	22	21

Model:Ecoled Cairo RGB  
Tester:Sergio Carneros  
Temperature:27Deg  
Manufacturer:Luz Negra S.L

Number: 10.243  
Date:2023-11-17 12:46:04  
Humidity:40%  
Remarks:100cm de néon (R+G+B)