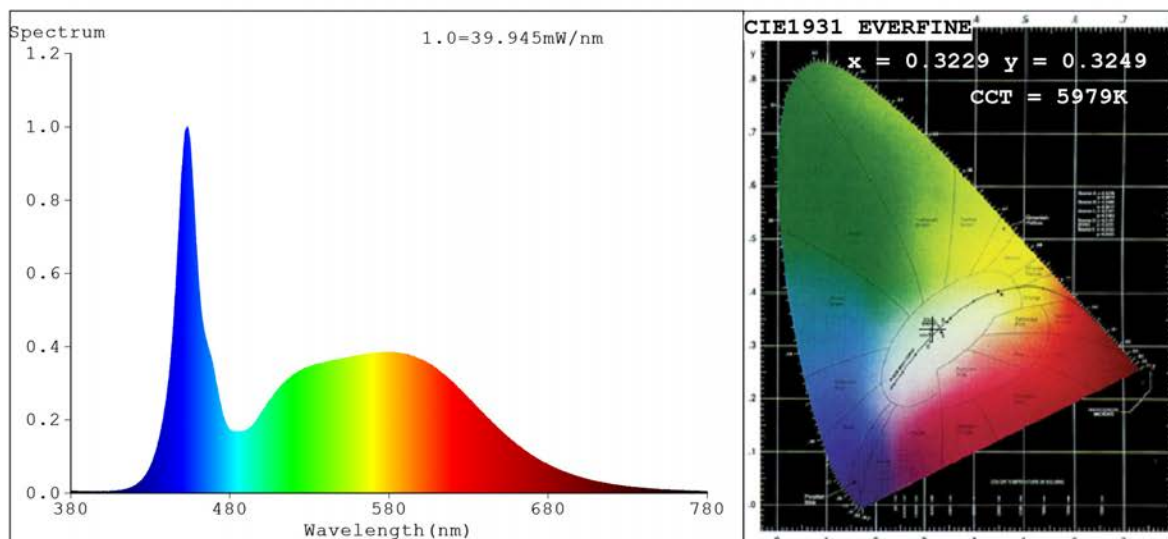


Spectrum Test Report



Color Parameters:

Chromaticity Coordinate: $x=0.3229$ $y=0.3249$ $u'=0.2066$ $v'=0.4676$
 CCT=5979K (Duv=-0.0040) Dominant WL: $\lambda_d = 480.3nm$ Purity=4.3%
 Ratio: R=15.0% G=79.6% B=5.4%; Peak WL: $\lambda_p = 453.3nm$ FWHM=16.7nm
 Render Index: Ra=85.6 CRI=79.4 TM30: Rf=80 Rg=97
 R1 =86 R2 =91 R3 =91 R4 =86 R5 =85 R6 =84 R7 =88
 R8 =74 R9 =26 R10=76 R11=84 R12=57 R13=88 R14=95 R15=84

Photo Parameters:

Flux = 985.7 lm Eff. : 120.59 lm/W Fe = 3.228 W Scotopic: 2128 S/P: 2.1588

Electrical parameters:

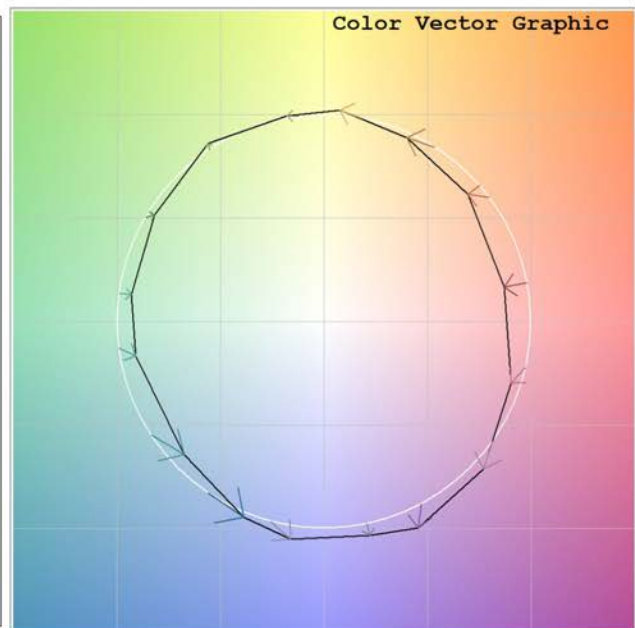
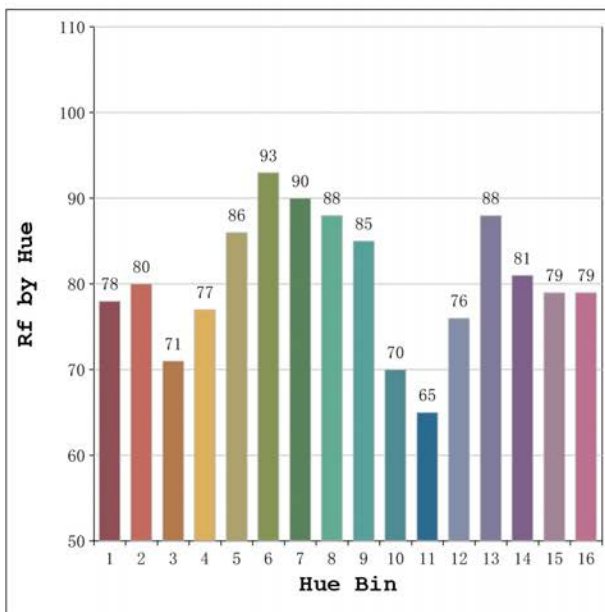
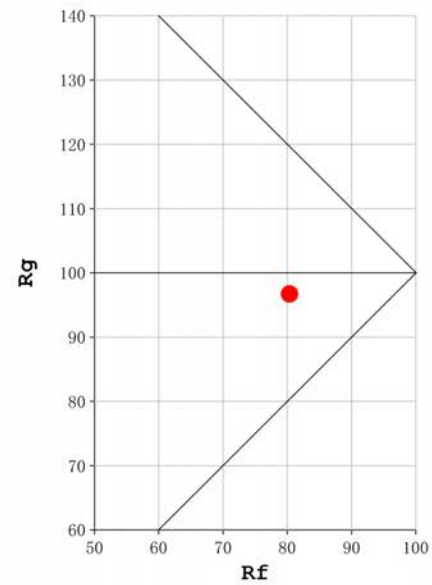
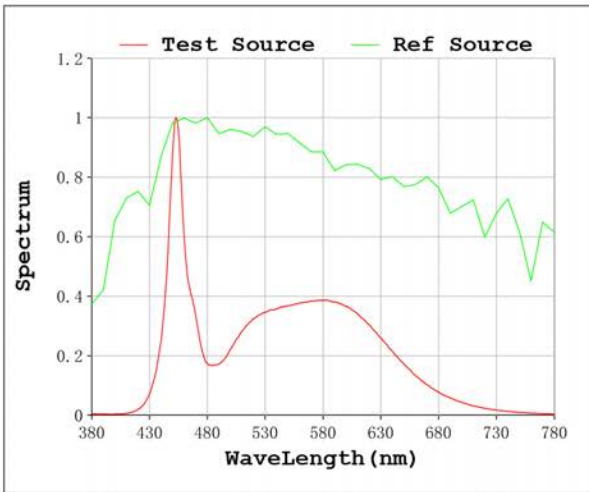
V = 47.998 V I = 0.1703 A P = 8.174 W PF = 1.000

Status: Integral T = 628 ms Ip = 33752 (52%)

Model: Castellón 6000K
 Tester: Sergio Carneros
 Temperature: 27Deg
 Manufacturer: Luz Negra S.L

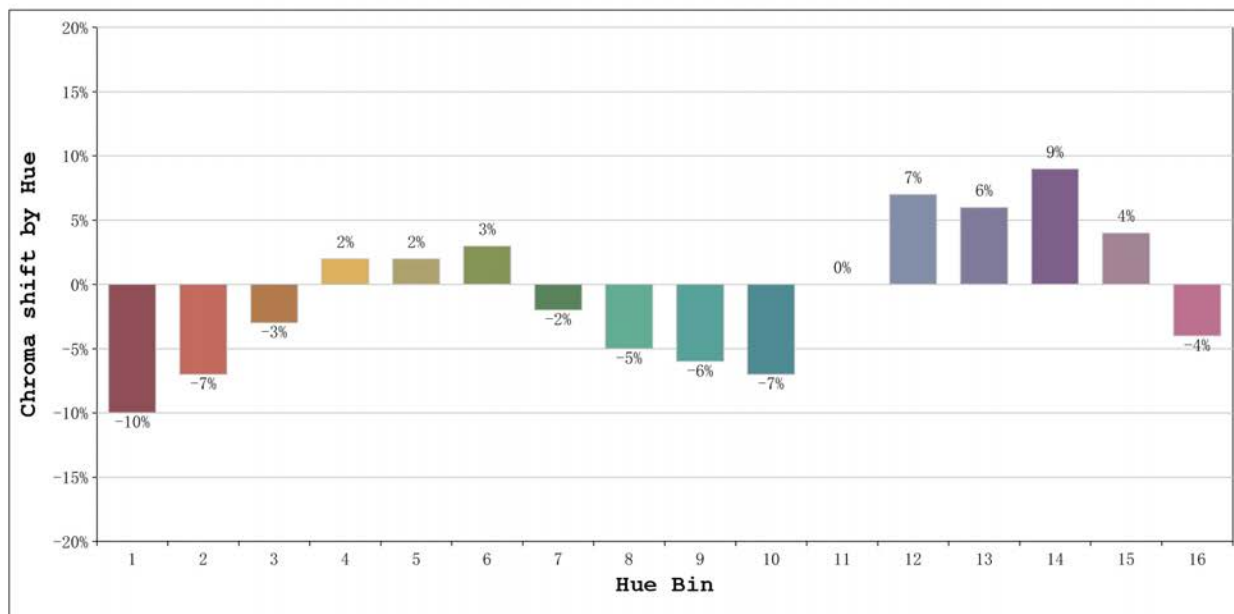
Number: 33.216
 Date: 2024-05-27 15:39:01
 Humidity: 40%
 Remarks: 100cm de tira flexible

Rf: 80 **CCT: 5979 K** **u': 0.2066**
Rg: 97 **Duv: -0.0040** **v': 0.4676**



Model:Castellón 6000K
 Tester:Sergio Carneros
 Temperature:27Deg
 Manufacturer:Luz Negra S.L

Number: 33.216
 Date:2024-05-27 15:39:01
 Humidity:40%
 Remarks:100cm de tira flexible



			Graphic shift(%)	
Hue Bin	Hue Angle	Rf	Chroma	Hue
1	0.0° - 22.5°	78	-10	0
2	22.5° - 45.0°	80	-7	7
3	45.0° - 67.5°	71	-3	13
4	67.5° - 90.0°	77	2	11
5	90.0° - 112.5°	86	2	5
6	112.5° - 135.0°	93	3	0
7	135.0° - 157.5°	90	-2	-2
8	157.5° - 180.0°	88	-5	0
9	180.0° - 202.5°	85	-6	6
10	202.5° - 225.0°	70	-7	16
11	225.0° - 247.5°	65	0	21
12	247.5° - 270.0°	76	7	11
13	270.0° - 292.5°	88	6	0
14	292.5° - 315.0°	81	9	-7
15	315.0° - 337.5°	79	4	-12
16	337.5° - 360.0°	79	-4	-8

Model:Castellón 6000K
Tester:Sergio Carneros
Temperature:27Deg
Manufacturer:Luz Negra S.L

Number: 33.216
Date:2024-05-27 15:39:01
Humidity:40%
Remarks:100cm de tira flexible