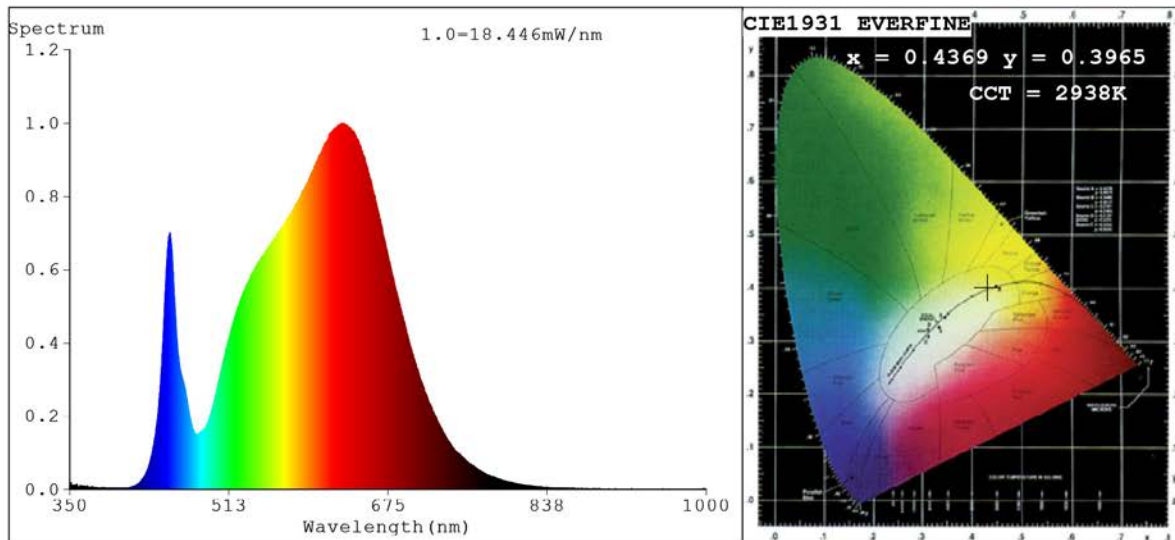


Spectrum Test Report



Color Parameters:

Chromaticity Coordinate: $x=0.4369$ $y=0.3965$ $u'=0.2538$ $v'=0.5184$
 $CCT=2938K$ ($Duv=-0.0030$) Dominant WL: $L_d = 584.2nm$ Purity=50.1%
 Ratio: $R=24.7\%$ $G=73.0\%$ $B=2.3\%$; Peak WL: $L_p=628.6nm$ FWHM=165.7nm
 Render Index: $R_a=91.7$ CRI=88.4 TM30: $R_f=88$ $R_g=104$ $L_{av}=605.5nm$
 $R1 = 93$ $R2 = 94$ $R3 = 92$ $R4 = 91$ $R5 = 91$ $R6 = 91$ $R7 = 93$
 $R8 = 87$ $R9 = 69$ $R10=84$ $R11=90$ $R12=73$ $R13=93$ $R14=95$ $R15=92$

Photo Parameters:

Flux = 901.7 lm Eff. : 75.09 lm/W $F_e = 3.259$ W

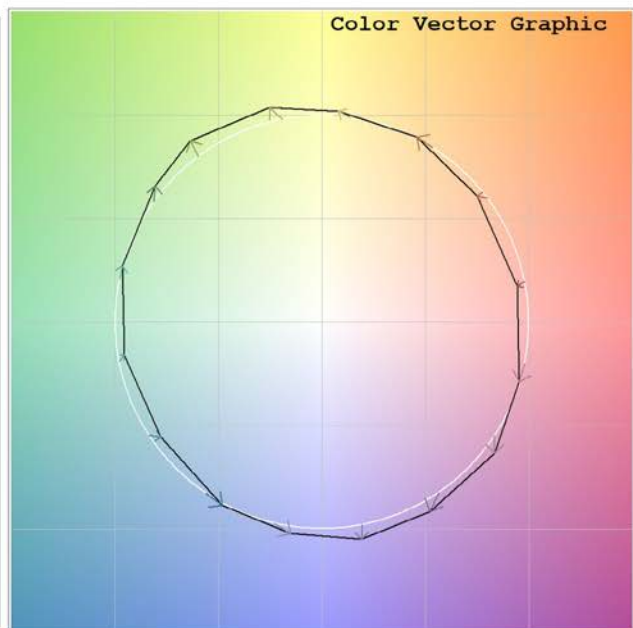
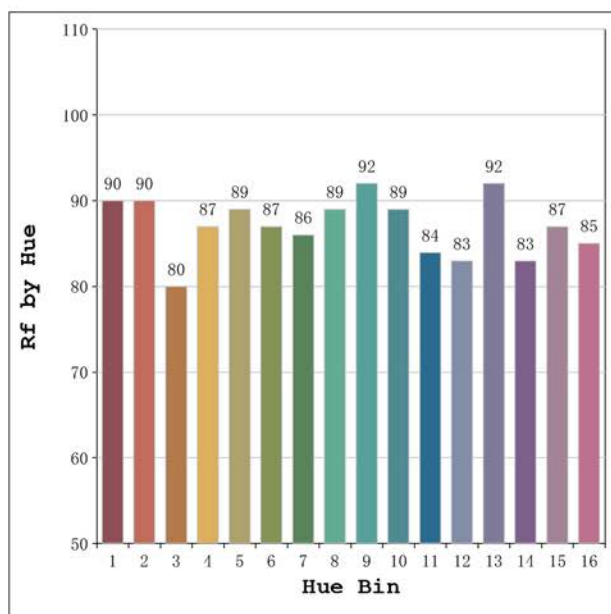
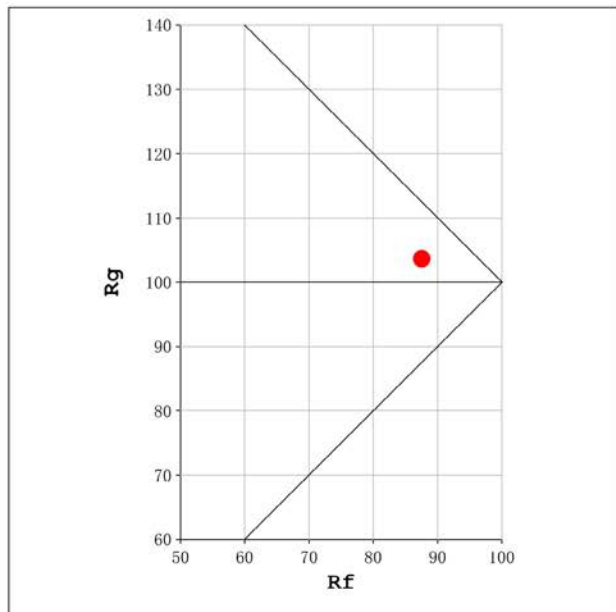
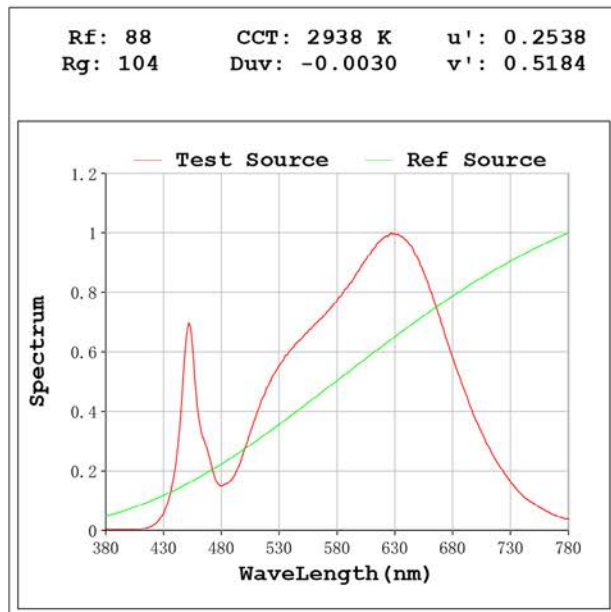
Electrical parameters:

$V = 23.998$ V $I = 0.5004$ A $P = 12.01$ W PF = 1.000

Status: Integral T = 1359 ms $I_p = 43318$ (66%)

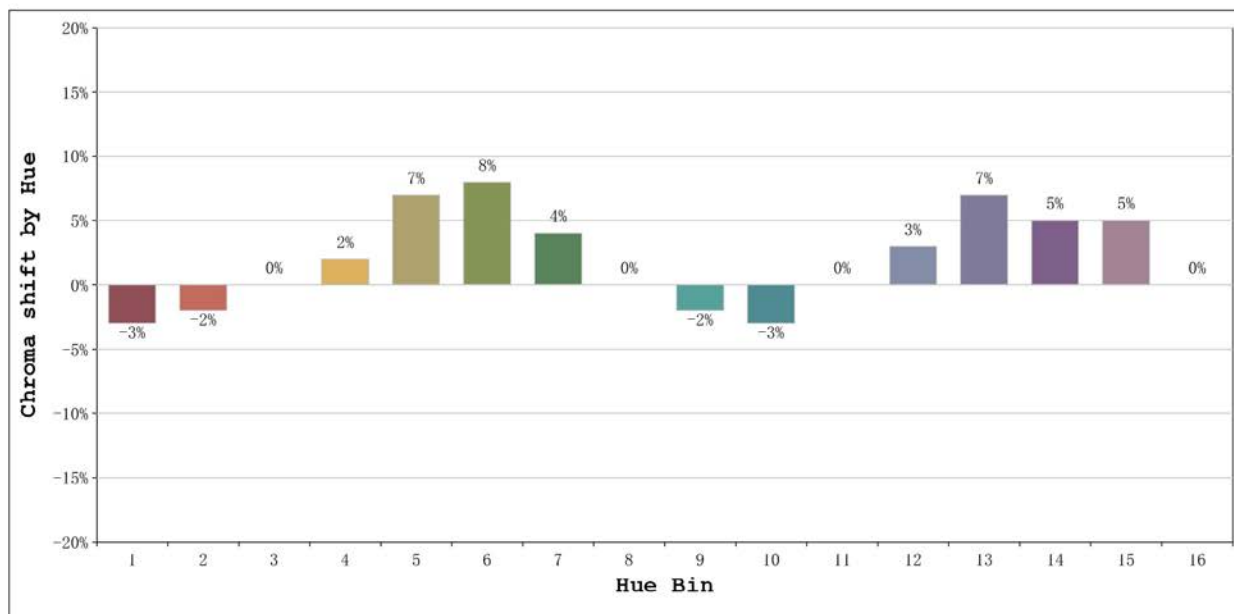
Model: Ecoled Neón 3D 3000K
 Tester: Sergio Carneros
 Temperature: 27Deg
 Manufacturer: Luz Negra S.L.

Number: 10.284
 Date: 2024-11-21 09:59:10
 Humidity: 35%
 Remarks: 100cm de Neón



Model:Ecoled Neón 3D 3000K
 Tester:Sergio Carneros
 Temperature:27Deg
 Manufacturer:Luz Negra S.L.

Number: 10.284
 Date:2024-11-21 09:59:10
 Humidity:35%
 Remarks:100cm de Neón



			Graphic shift(%)	
Hue Bin	Hue Angle	Rf	Chroma	Hue
1	0.0° - 22.5°	90	-3	0
2	22.5° - 45.0°	90	-2	3
3	45.0° - 67.5°	80	0	9
4	67.5° - 90.0°	87	2	6
5	90.0° - 112.5°	89	7	5
6	112.5° - 135.0°	87	8	0
7	135.0° - 157.5°	86	4	-6
8	157.5° - 180.0°	89	0	-6
9	180.0° - 202.5°	92	-2	-1
10	202.5° - 225.0°	89	-3	4
11	225.0° - 247.5°	84	0	10
12	247.5° - 270.0°	83	3	9
13	270.0° - 292.5°	92	7	-1
14	292.5° - 315.0°	83	5	-7
15	315.0° - 337.5°	87	5	-6
16	337.5° - 360.0°	85	0	-8

Model:Ecoled Neón 3D 3000K
Tester:Sergio Carneros
Temperature:27Deg
Manufacturer:Luz Negra S.L.

Number: 10.284
Date:2024-11-21 09:59:10
Humidity:35%
Remarks:100cm de Neón