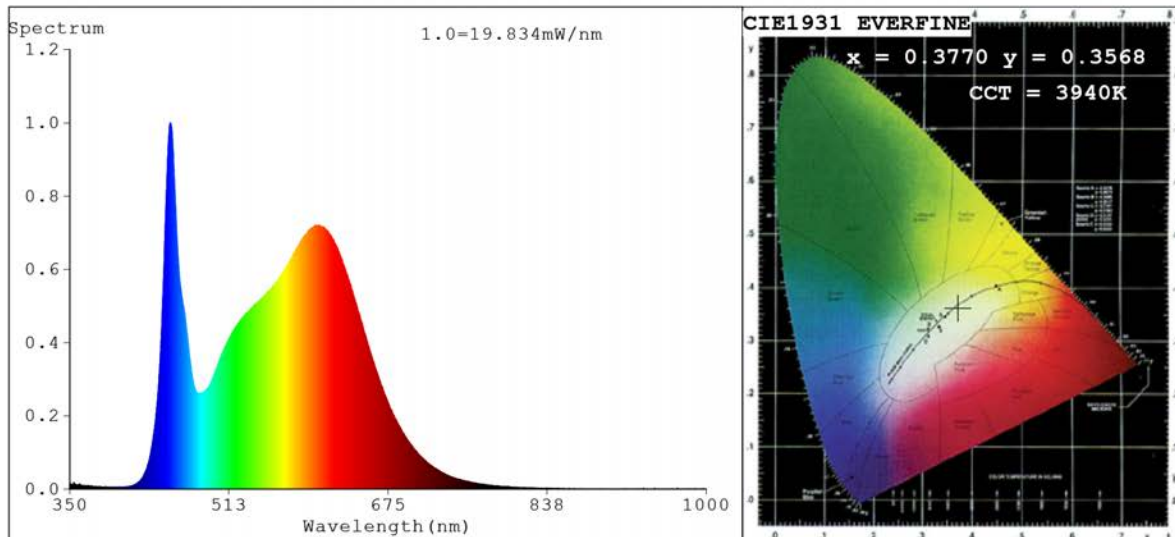


Spectrum Test Report



Color Parameters:

Chromaticity Coordinate: $x=0.3770$ $y=0.3568$ $u'=0.2310$ $v'=0.4920$
 CCT=3940K (Duv=-0.0086) Dominant WL:Ld =585.8nm Purity=20.2%
 Ratio:R=20.3% G=75.4% B=4.3%; Peak WL:Lp=452.6nm FWHM=21.5nm
 Render Index:Ra=89.9 CRI=86.4 TM30:Rf=85 Rg=100
 R1 =92 R2 =97 R3 =96 R4 =89 R5 =91 R6 =92 R7 =87
 R8 =76 R9 =45 R10=92 R11=89 R12=71 R13=94 R14=99 R15=89

Photo Parameters:

Flux = 796.1 lm Eff. : 34.52 lm/W Fe = 2.618 W

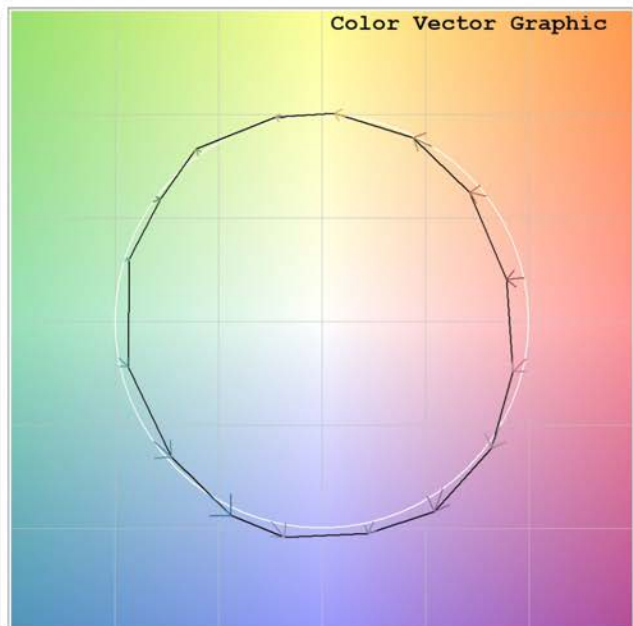
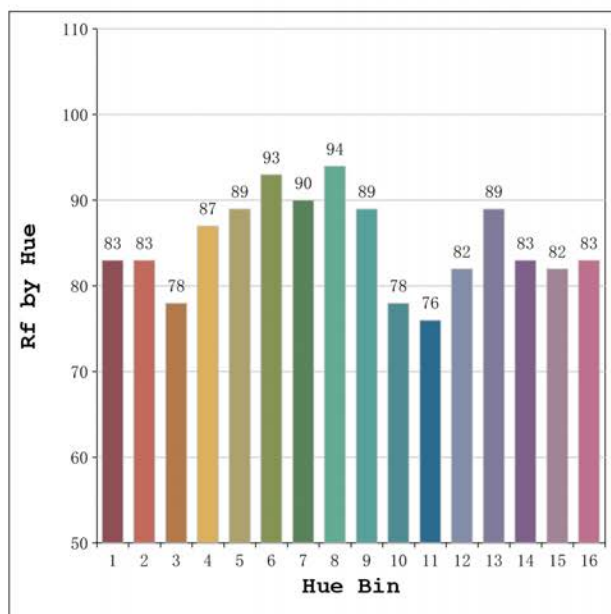
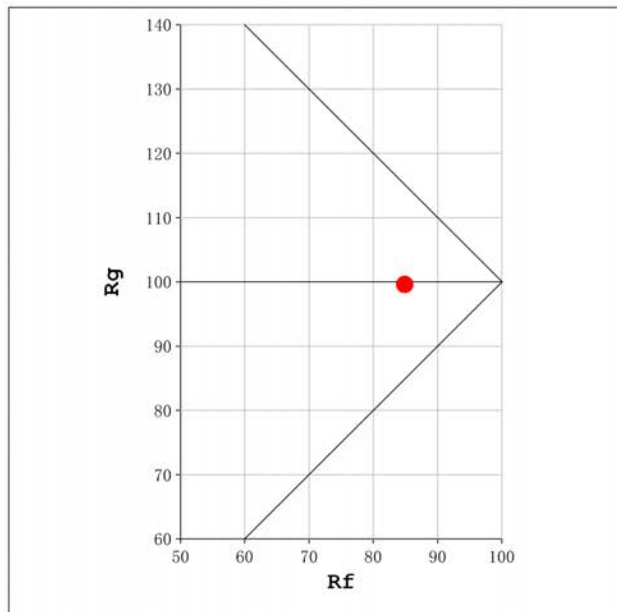
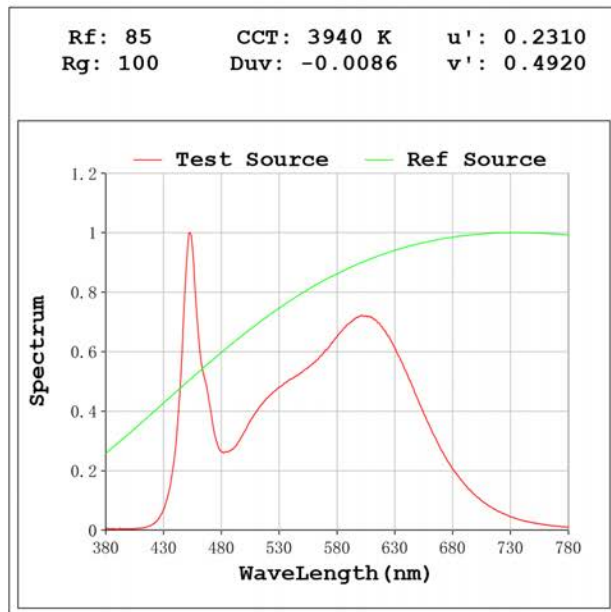
Electrical parameters:

V = 23.998 V I = 0.9609 A P = 23.06 W PF = 1.000

Status: Integral T = 1718 ms Ip = 49140 (75%)

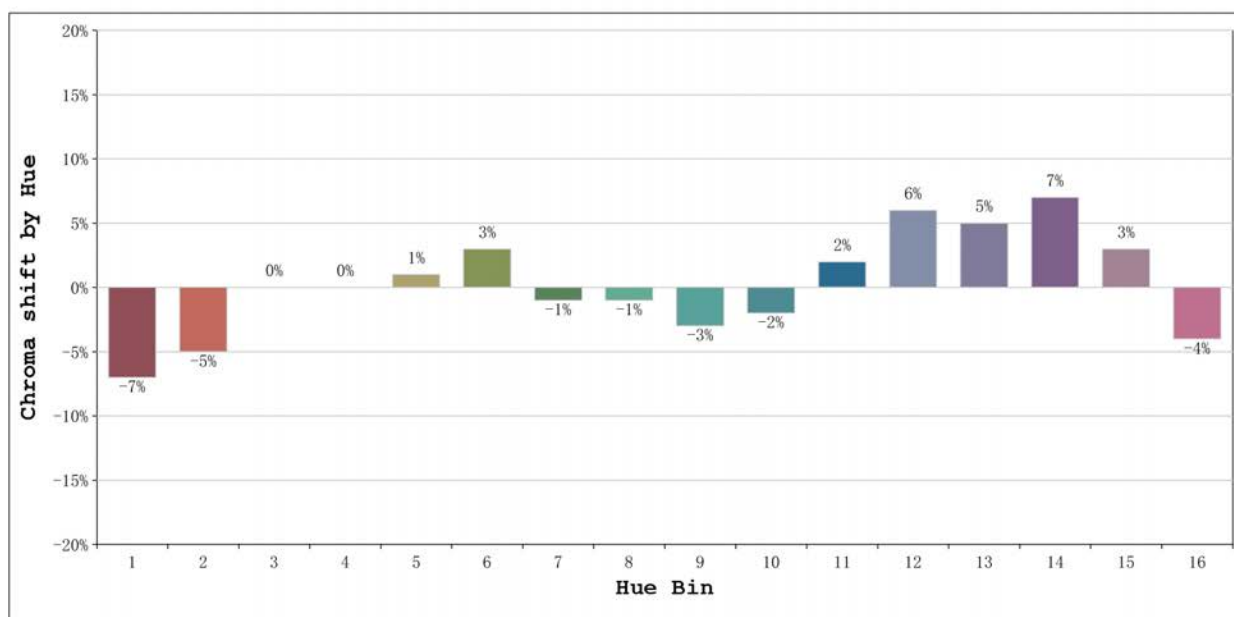
Model:Ecoled Neón Dakar 250
 Tester:Sergio Carneros
 Temperature:27Deg
 Manufacturer:Luz Negra S.L

Number: 10.294
 Date:2024-10-03 13:29:17
 Humidity:40%
 Remarks:2500mm de neon



Model:Ecoled Neón Dakar 250
 Tester:Sergio Carneros
 Temperature:27Deg
 Manufacturer:Luz Negra S.L

Number: 10.294
 Date:2024-10-03 13:29:17
 Humidity:40%
 Remarks:2500mm de neon



| | | | Graphic shift(%) | |
|---------|-----------------|----|------------------|-----|
| Hue Bin | Hue Angle | Rf | Chroma | Hue |
| 1 | 0.0° - 22.5° | 83 | -7 | 1 |
| 2 | 22.5° - 45.0° | 83 | -5 | 6 |
| 3 | 45.0° - 67.5° | 78 | 0 | 10 |
| 4 | 67.5° - 90.0° | 87 | 0 | 6 |
| 5 | 90.0° - 112.5° | 89 | 1 | 4 |
| 6 | 112.5° - 135.0° | 93 | 3 | 0 |
| 7 | 135.0° - 157.5° | 90 | -1 | -2 |
| 8 | 157.5° - 180.0° | 94 | -1 | 0 |
| 9 | 180.0° - 202.5° | 89 | -3 | 5 |
| 10 | 202.5° - 225.0° | 78 | -2 | 11 |
| 11 | 225.0° - 247.5° | 76 | 2 | 14 |
| 12 | 247.5° - 270.0° | 82 | 6 | 8 |
| 13 | 270.0° - 292.5° | 89 | 5 | -3 |
| 14 | 292.5° - 315.0° | 83 | 7 | -8 |
| 15 | 315.0° - 337.5° | 82 | 3 | -10 |
| 16 | 337.5° - 360.0° | 83 | -4 | -6 |

Model:Ecoled Neón Dakar 250
 Tester:Sergio Carneros
 Temperature:27Deg
 Manufacturer:Luz Negra S.L

Number: 10.294
 Date:2024-10-03 13:29:17
 Humidity:40%
 Remarks:2500mm de neon