

Our PROFESSIONAL led profile series is manufactured in high purity aluminium and is available in raw aluminium. It is ideal for illuminating ceilings and wall surfaces, where the profile is perfectly integrated. These optimum adherence properties are achievable thanks to Madeira's two side trims, which end up entirely covered under the plaster wall's surface once the mounting has been finished. We recommend the use of a metal mesh on our Madeira, in order to strengthen the mounted joints and also to avoid cracks in the future.

It is suitable for led strips with a maximum width of 20mm and a power not greater than 30W/m. In order to obtain a more homogeneous illumination while also improving the dot free effect, we recommend the use of our Canovelles-Barcelona-Gomera-COB ecoled strips.

We offer a 10 year guarantee on our profiles and covers.

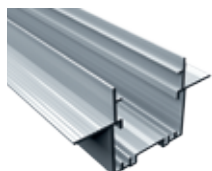
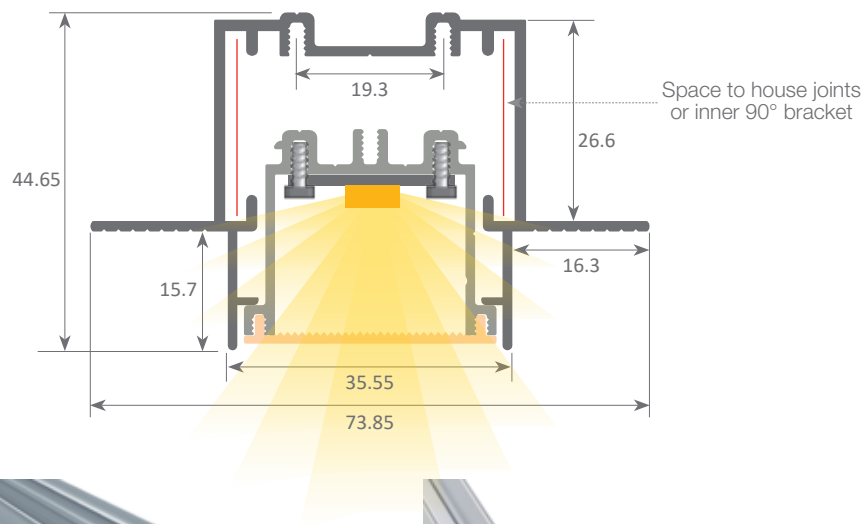
MADEIRA



IP65



Scale 1:1



Aluminium profile

08.009 raw

6m



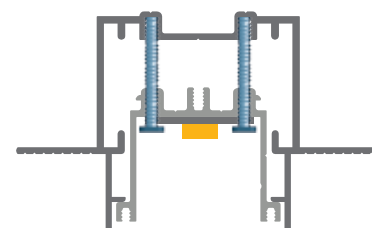
Aluminium tray

15.007 lacquered white 6 m



Aluminium endcaps

19.213 raw



Fixing screws between Madeira tray and profile (Ref: 22.080)



"easy-ON" cover

18.070	"easy-ON" frosted	6m
18.071	transparent microprism	6m
18.072	frosted microprism	6m
18.073	Black&White	6m



90° angle bracket

22.035 aluminium set of 2 units



Flat bracket

22.058 aluminium set of 2 units



Safety cable

22.039 steel 18cm



Aluminium alloy extrusion process in accordance with: ISO 9001:2008 - ISO 14001 / Tolerances defined by: UNE-EN 755-9 / UNE-EN 12020-2
Theoretical weight: 0.756kg / Alloy: 6063 / Perimeter: 409mm / Anodising minimum: 15 microns
Aluminium purity: 95-98% / Material treatment: T-5 / Covers: methacrylate (greater protection against UV rays)