

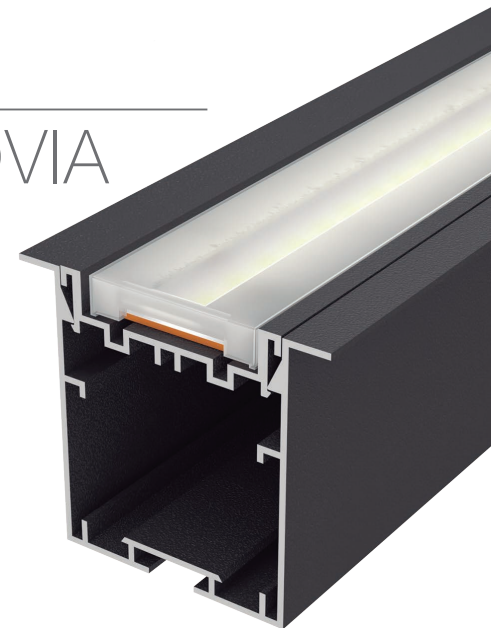
Our PROFESSIONAL led profile series for recessing applications is manufactured in high purity aluminium and lacquered in textured white, black and grey. Drivers can be housed inside.

This profile can be used with different types of optics (see page 307).

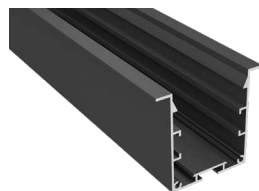
The internal tray allows us to screw the rigid led strip on one side and enables us to house the power supply on the other. At the same time this tray can be removed from the front which means easy maintenance. For safety measures, we recommend the fixing of a braided cable from the profile base to the dissipation tray. Both profile and cover are available in 3.4 metre lengths.

**We offer a 5 year guarantee on the profiles and covers.**

## KRAKOVIA with OPTIC



Scale 1:1



### Aluminium profile

14.011	textured grey	3.40m
14.012	textured white	3.40m
14.013	textured black	3.40m



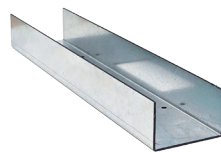
### Internal tray

14.014	textured grey	3.40m
14.015	textured white	3.40m
14.026	textured black	3.40m



### Optic

See page 307



### Profile joints

22.219	steel
--------	-------



### Aluminium endcaps

19.201	grey
19.202	white
19.203	black



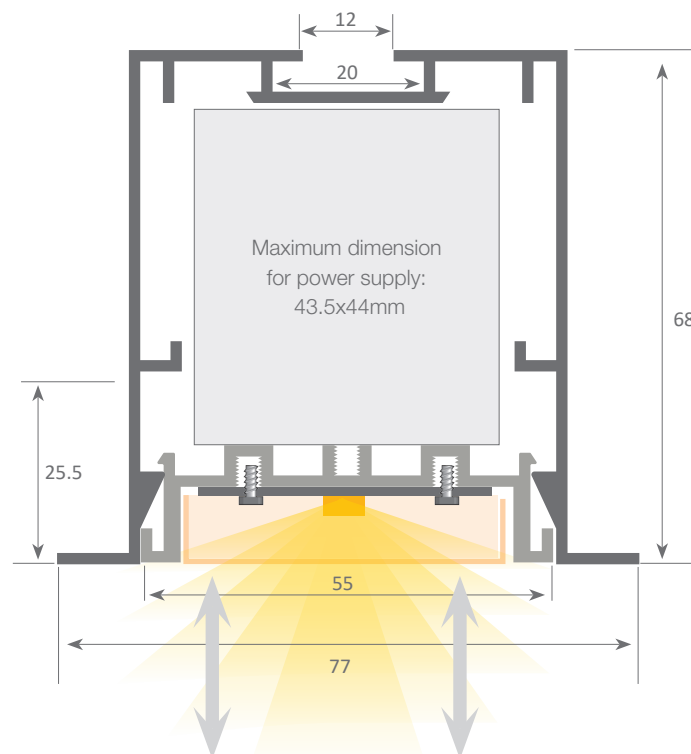
### Fixing bracket

20.047	steel
--------	-------



### Safety cable

22.039	steel	18cm
--------	-------	------



System with front removable tray which permits easy access to the led strip and power supply, therefore allowing very fast and simple maintenance of the electrical installation.



Aluminium alloy extrusion process in accordance with: ISO 9001:2008 - ISO 14001 / Tolerances: UNE-EN 755-9 / UNE-EN 12020-2  
Theoretical weight: 1.202Kg / Alloy: 6063 / Perimeter: 562mm / Anodising minimum: 15 microns  
Purity aluminium: 95-98% / Treatment: T-5