

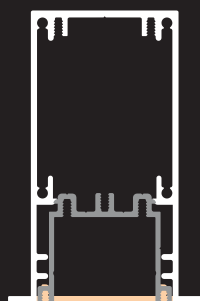
big profiles for recessing





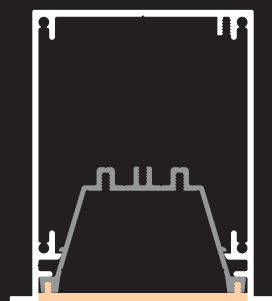
MOSCU
MINI

214



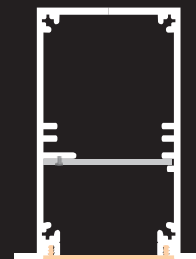
MOSCU
MAGNUM
SLIM

216



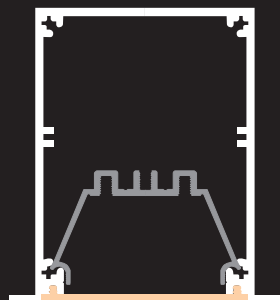
MOSCU
MAGNUM

218



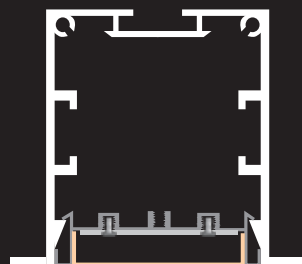
MOSCU
SLIM

220



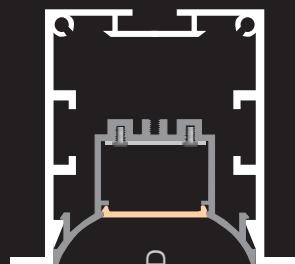
MOSCU

221



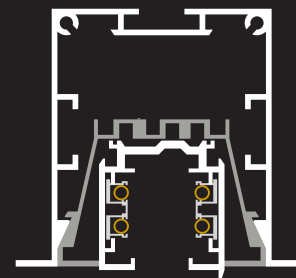
KRAKOVIA
with OPTIC

222



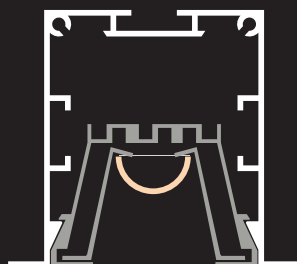
KRAKOVIA
with RECESSED
TRAY

223



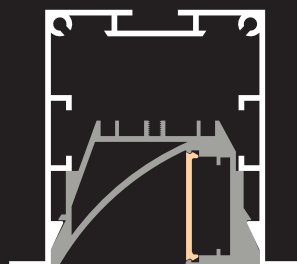
KRAKOVIA
with
3-phase rail

224



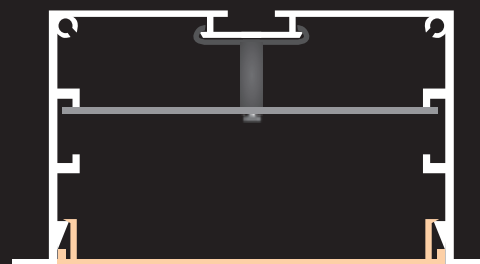
KRAKOVIA
with tray
and trellis

225



KRAKOVIA
ASYMMETRIC

226



ANDORRA

227

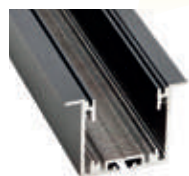
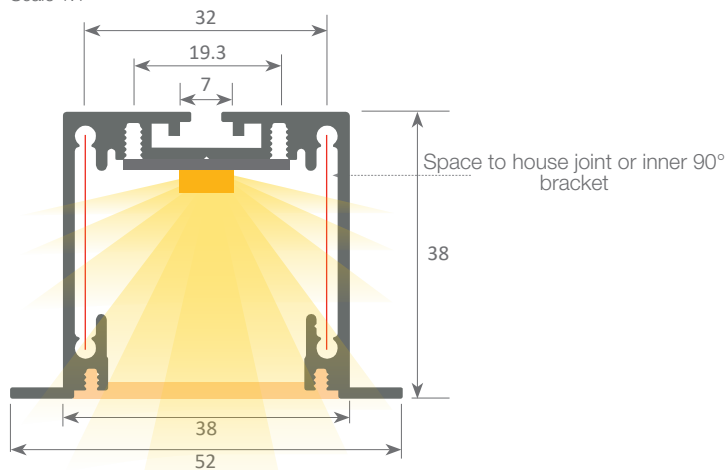
led profile by Luz Negra

Our PROFESIONAL led profile series for embedding is manufactured in high purity silver anodised and black or white lacquered textured aluminium.

Its cover ("easy-ON" system) in frosted white finishing, which offers an IP65 to the luminaire, is extremely useful in areas with high humidity levels (not suitable for white or black lacquered finishings). Covers are also available in frosted or transparent microprism, which improve glare and also higher UGR levels. Both profile and cover are available in 6m length, allowing us to carry out long projects without joints.

We offer a 10 year guarantee on the profile and a 4 year guarantee on the covers.

Scale 1:1



Aluminium profile

14.001	silver anodised	6m
14.002	lacquered white	6m
14.003	lacquered black	6m



Aluminium endcaps

19.186	silver anodised
19.187	lacquered white
19.188	lacquered black



Fixing bracket

20.023	for shallow recessing profiles
--------	--------------------------------



"easy-ON" polycarbonate cover

18.070	"easy-ON" frosted	6m
18.071	transparent microprism	6m
18.072	frosted microprism	6m
18.073	Black&White	6m



Fixing bracket

20.042	steel
--------	-------

MOSCU MINI



IP65



Patente Europea
Nº.: 13156605.1

Aluminium alloy extrusion process in accordance with: ISO 9001:2008 - ISO 14001 / Tolerances defined by: UNE-EN 755-9 / UNE-EN 12020-2
Theoretical weight: 0,862Kg / Alloy: 6063 / Perimeter: 380mm / Anodising minimum: 15 microns
Purity aluminium: 95-98% / Treatment: T-5 / Covers: Fireproof V0



90° angle bracket
22.035 aluminium

set of 2 units



Inner plate
22.034 aluminium

set of 2 units



Flat bracket
22.058 aluminium

set of 2 units

Our PROFESIONAL led profile series for embedding is manufactured in high purity silver anodised and black or white lacquered textured aluminium. Its internal tray, where the led and the power supply are placed, can be removed from the front which means easy maintenance. Drivers can be housed inside. Its "easy-ON" system cover in frosted white finishing, which offers an IP65 to the luminaire, is extremely useful in areas with high humidity levels.

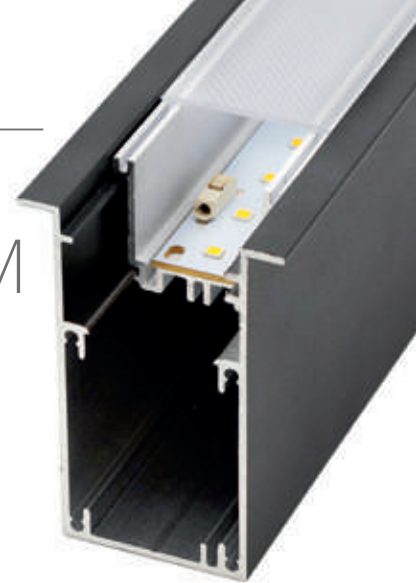
Covers are also available in frosted or transparent microprism, which improves glare and also UGR levels. Both profile and cover are available in 6m lengths, allowing us to carry out long projects without joints.

We offer a 10 year guarantee on the profile and a 4 year guarantee on the covers.

MOSCU MAGNUM SLIM



IP65



Aluminium profile

15.004	anodised silver	6m
15.005	lacquered white	6m
15.006	lacquered black	6m



Aluminium tray

15.007	lacquered white	6m
--------	-----------------	----



"easy-ON" polycarbonate cover

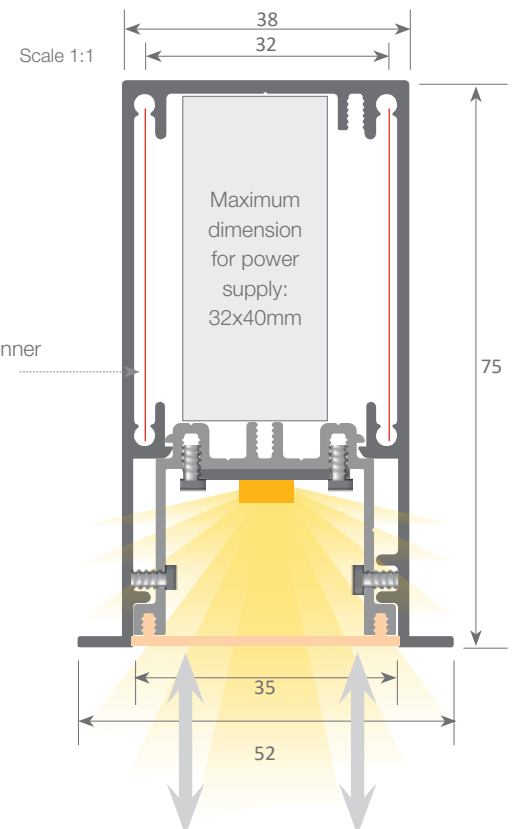
18.070	frosted	6m
18.071	transparent microprism	6m
18.072	frosted microprism	6m
18.073	Black&White	6m



90° angle bracket

22.040	aluminium	set of 2 units
--------	-----------	----------------

Space to house joint or inner 90° bracket



Aluminium endcaps

19.195	anodised silver
19.196	lacquered white
19.197	lacquered black



Flat bracket

22.057	aluminium	set of 2 units
--------	-----------	----------------



Inner plate

22.041	aluminium	set of 2 units
--------	-----------	----------------



Safety cable

22.039	steel	18 cm
--------	-------	-------



Fixing bracket

20.045	steel
--------	-------

System with front removable tray which permits easy access to the led strip and power supply, therefore allowing very fast and simple maintenance of the electrical installation.



Patente Europea
Nº.: 13156605.1

Aluminium alloy extrusion process in accordance with: ISO 9001:2008 - ISO 14001 / Tolerances defined by: UNE-EN 755-9 / UNE-EN 12020-2
Theoretical weight: 1.464Kg / Alloy: 6063 / Perimeter: 483mm / Anodising minimum: 15 microns
Purity aluminium: 95-98% / Treatment: T-5 / Covers: Fireproof V0

90° angle bracket
22.040

Flat bracket
22.057

Our PROFESIONAL led profile series for embedding is manufactured in high purity silver anodised and black or white lacquered textured aluminium. Its internal tray, where the led and the power supply are placed, can be removed from the front which means easy maintenance. Drivers can be housed inside. Its "easy-ON" system cover in frosted white finishing, which offers an IP65 to the luminaire, is extremely useful in areas with high humidity levels.

Covers are also available in frosted or transparent microprism, which improves glare and also UGR levels. Both profile and cover are available in 6m lengths, allowing us to carry out long projects without joints.

We offer a 10 year guarantee on the profile and a 4 year guarantee on the covers.

MOSCU MAGNUM



IP65



Aluminium profile

14.004	anodised silver	6 m
14.005	lacquered black	6 m
14.006	lacquered white	6 m



Aluminium tray

14.007	lacquered white	6m
--------	-----------------	----



Fixing bracket

20.044	steel
--------	-------



"easy-ON" polycarbonate cover

18.074	frosted	6 m
18.075	transparent microprism	6 m
18.076	frosted microprism	6 m



Aluminium endcaps

19.192	silver anodised
19.193	lacquered white
19.194	lacquered black



Inner plate

22.038	aluminium	set of 2 pieces
--------	-----------	-----------------



Safety cable

22.039	steel	18 cm
--------	-------	-------



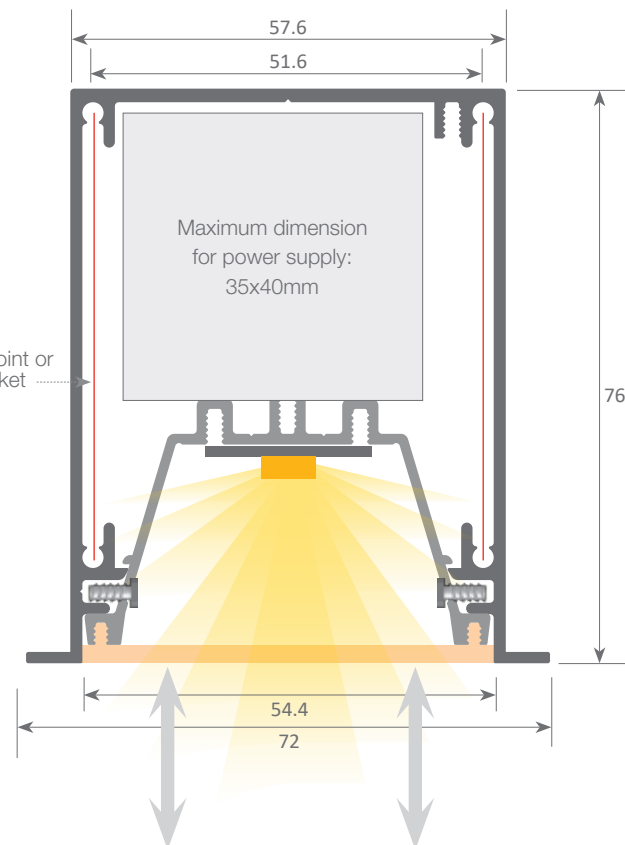
90° angle bracket

22.037	aluminium	set of 2 pieces
--------	-----------	-----------------



Flat bracket

22.059	aluminium	set of 2 units
--------	-----------	----------------



System with front removable tray which permits easy access to the led strip and power supply, therefore allowing very fast and simple maintenance of the electrical installation.



Patente Europea
Nº.: 13156605.1

Aluminium alloy extrusion process in accordance with: ISO 9001:2008 - ISO 14001 / Tolerances defined by: UNE-EN 755-9 / UNE-EN 12020-2
Theoretical weight: 1.666Kg / Alloy: 6063 / Perimeter: 535mm / Anodising minimum: 15 microns
Purity aluminium: 95-98% / Treatment: T-5 / Covers: Fireproof V0



90° angle bracket
22.037



Flat bracket
22.059



led profile by Luz Negra

Our PROFESIONAL led profile series for embedding is manufactured in high purity silver anodised and black or white lacquered textured aluminium. Drivers can be housed inside.

This profile can be combined with our "easy-ON" frosted white cover, which offers an IP65 to the luminaire. This is extremely useful in areas with high humidity levels. We also have available transparent and frosted microprism covers which improve glare and UGR levels.

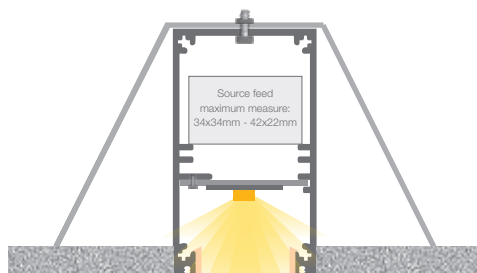
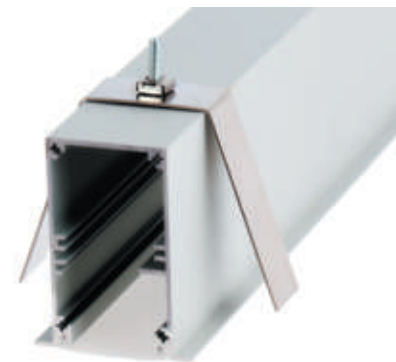
Both profile and cover are available in 6m length allowing us to carry out long projects without joints.

We offer a 10 year guarantee on the profiles and a 4 year guarantee on the covers.

MOSCU SLIM



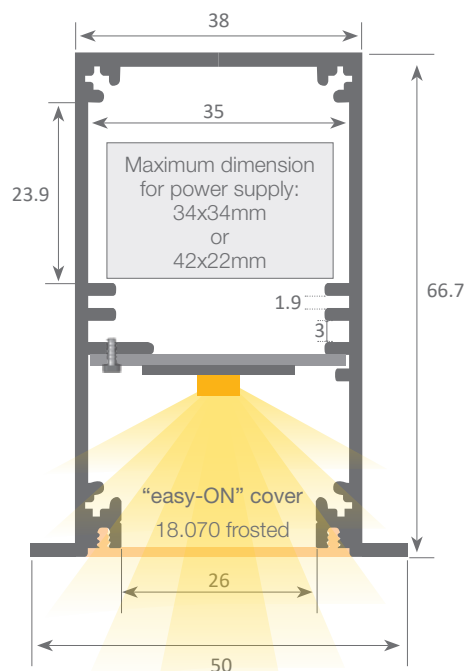
IP65



Microprism cover

18.071 transparent - 18.072 frosted

Scale 1:1



Aluminium profile

15.001	silver anodised	6m
15.002	lacquered white	6m
15.003	lacquered black	6m



"easy-ON" polycarbonate cover

18.070	frosted	6m
18.071	transparent microprism	6m
18.072	frosted microprism	6m
18.073	Black&White	6m



Aluminium endcaps

19.189	silver anodised
19.190	lacquered white
19.191	lacquered black



Fixing bracket

20.043	steel
--------	-------



Inner plate

22.036	aluminium	200 cm
--------	-----------	--------



Patente Europea
Nº.: 13156605.1

Aluminium alloy extrusion process in accordance with: ISO 9001:2008 - ISO 14001 / Tolerances defined by: UNE-EN 755-9 / UNE-EN 12020-2
Theoretical weight: 1.048Kg / Alloy: 6063 / Perimeter: 483mm / Anodising minimum: 15 microns
Purity aluminium: 95-98% / Treatment: T-5 / Covers: Fireproof V0

led profile by Luz Negra

Our PROFESSIONAL led profile series for recessing is manufactured in high purity silver anodised and black or white lacquered textured aluminium. Drivers can be housed inside.

This profile can be combined with our "easy-ON" frosted white cover, which offers an IP65 to the luminaire, and it is extremely useful in areas with high humidity levels. We also have available transparent and frosted microprism covers which improve glare and UGR levels.

Both profile and cover are available in 6 metre lengths which permit long installations to be carried out without requiring joints.

We offer a 10 year guarantee on the profiles and a 4 year guarantee on the covers.

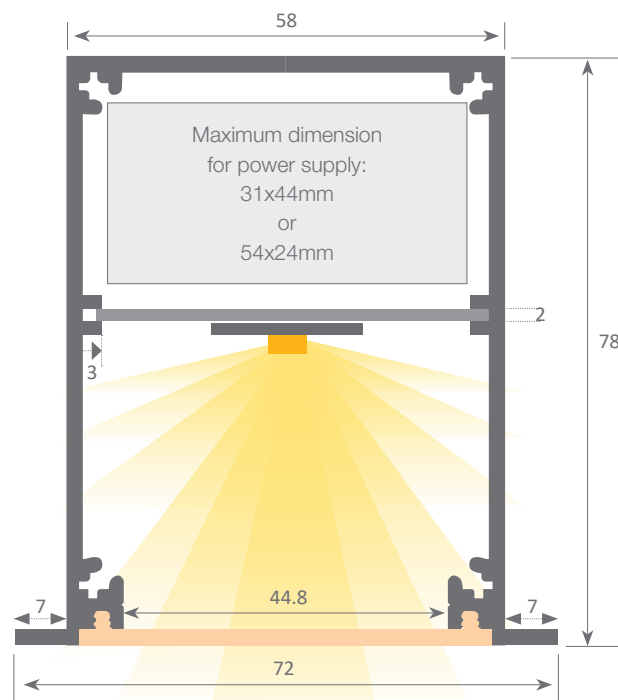
MOSCU



IP65



Scale 1:1



Aluminium profile

14.008	anodised silver	6m
14.009	lacquered white	6m
14.010	lacquered black	6m



Fixing bracket

20.046	steel	
Measurements: 60x75mm		



"easy-ON" polycarbonate cover

18.074	frosted	6m
18.075	transparent microprism	6m
18.076	frosted microprism	6m



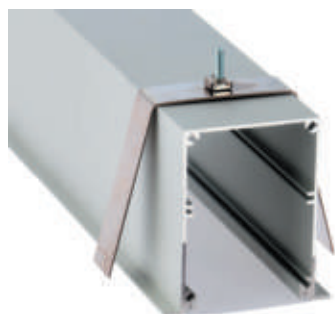
Inner plate

22.042	aluminium	200 cm
22.043	for optic rigid strip 40mm	200 cm



Aluminium endcaps

19.198	silver anodised
19.199	lacquered white
19.200	lacquered black



Patente Europea
Nº.: 13156605.1

Aluminium alloy extrusion process in accordance with: ISO 9001:2008 - ISO 14001 / Tolerances: UNE-EN 755-9 / UNE-EN 12020-2
Theoretical weight: 1.239Kg / Alloy: 6063 / Perimeter: 544mm / Anodising minimum: 15 microns
Purity aluminium: 95-98% / Treatment: T-5 / Covers: Fireproof V0

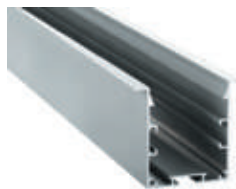
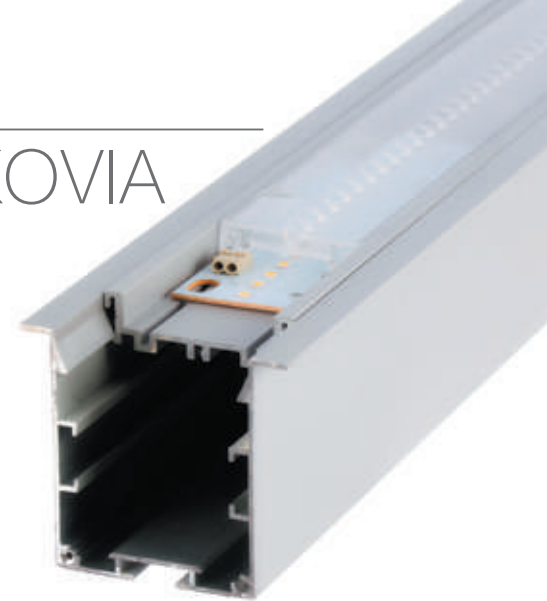
Our PROFESSIONAL led profile series for recessing applications is manufactured in high purity aluminium and lacquered in textured white, black and grey. Drivers can be housed inside.

This profile can be used with different types of optics (see page 307).

The internal tray allows us to screw the rigid led strip on one side and enables us to house the power supply on the other. At the same time this tray can be removed from the front which means easy maintenance. For safety measures, we recommend the fixing of a braided cable from the profile base to the dissipation tray. Both profile and cover are available in 3.4 metre lengths.

We offer a 2 year guarantee on the profiles and covers.

KRAKOVIA with OPTIC



Aluminium profile

14.011	textured grey	3.40m
14.012	textured white	3.40m
14.013	textured black	3.40m



Internal tray

14.014	textured grey	3.40m
14.015	textured white	3.40m
14.026	textured black	3.40m



Optic

See page 307



Joint between profiles

22.044	steel	set of 2 units
--------	-------	----------------



Aluminium endcaps

19.201	grey
19.202	white
19.203	black



Fixing bracket

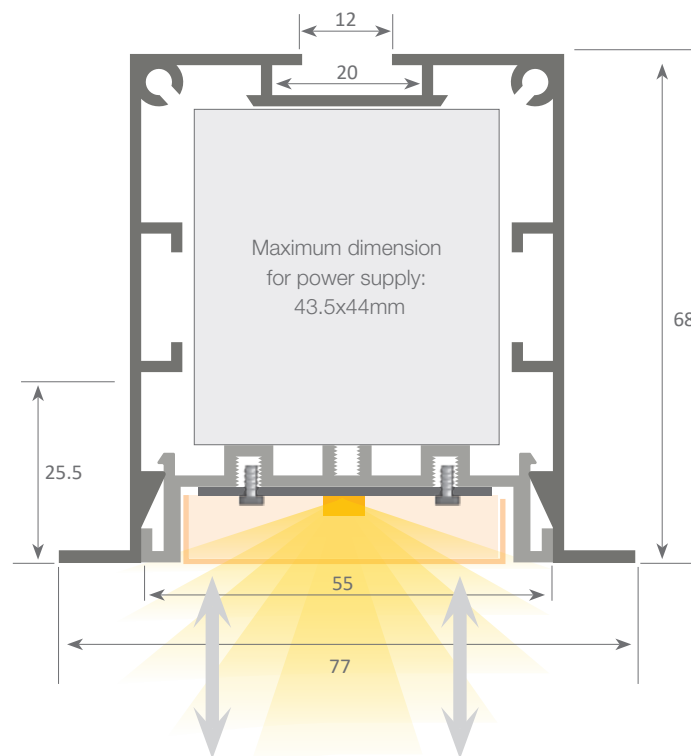
20.047	steel
--------	-------



Safety cable

22.039	steel	18cm
--------	-------	------

Scale 1:1



System with front removable tray which permits easy access to the led strip and power supply, therefore allowing very fast and simple maintenance of the electrical installation.

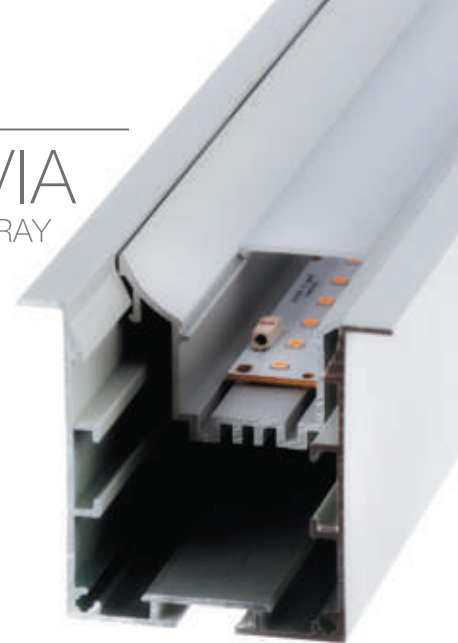


Aluminium alloy extrusion process in accordance with: ISO 9001:2008 - ISO 14001 / Tolerances: UNE-EN 755-9 / UNE-EN 12020-2
Theoretical weight: 1.202Kg / Alloy: 6063 / Perimeter: 562mm / Anodising minimum: 15 microns
Purity aluminium: 95-98% / Treatment: T-5

Our PROFESSIONAL led profile series for recessing applications is manufactured in high purity aluminium and lacquered in textured white, black and grey. Drivers can be housed inside. The internal tray allows us to screw the rigid led strip on one side and enables us to house the power supply on the other. At the same time this tray can be removed from the front which means easy maintenance. For safety measures, we recommend the fixing of a braided cable from the profile base to the dissipation tray. Both profile and cover are available in 3.4 metre lengths.

We offer a 2 year guarantee on the profiles and covers.

KRAKOVIA with RECESSED TRAY



Scale 1:1



Aluminium profile

14.011	textured grey	3.40m
14.012	textured white	3.40m
14.013	textured black	3.40m



Recessed tray

14.018	textured grey	3.40m
14.019	textured white	3.40m
14.025	textured black	3.40m



Polycarbonate cover

18.079	frosted	3.40m
--------	---------	-------



Joint between profiles

22.044	steel	set of 2 units
--------	-------	----------------



Aluminium endcaps

19.201	grey
19.202	white
19.203	black



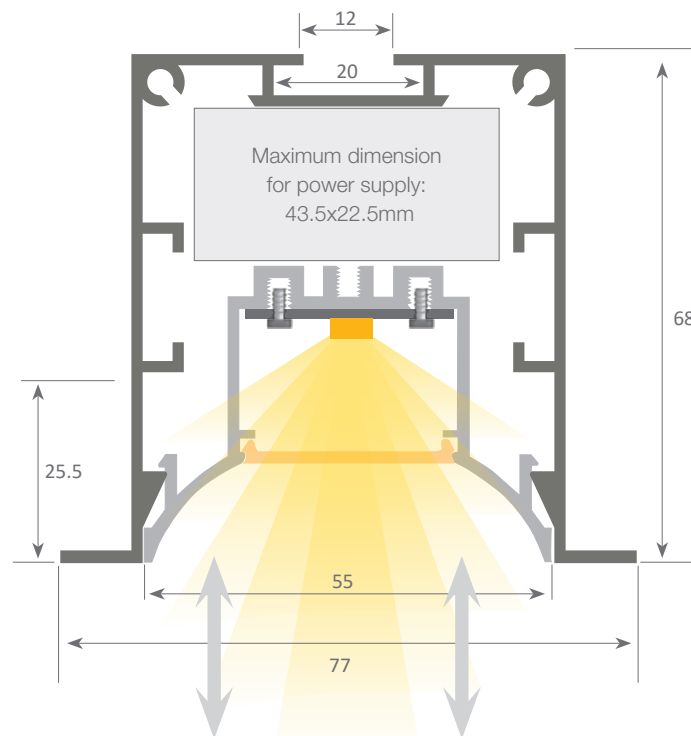
Fixing bracket

20.047	steel
--------	-------



Safety cable

22.039	steel	18cm
--------	-------	------



System with front removable tray which permits easy access to the led strip and power supply, therefore allowing very fast and simple maintenance of the electrical installation.



Aluminium alloy extrusion process in accordance with: ISO 9001:2008 - ISO 14001 / Tolerances: UNE-EN 755-9 / UNE-EN 12020-2
Theoretical weight: 1.202Kg / Alloy: 6063 / Perimeter: 562mm / Anodising minimum: 15 microns
Purity aluminium: 95-98% / Treatment: T-5

Our PROFESSIONAL led profile series for recessing applications is manufactured in high purity aluminium and lacquered in white or textured black. Drivers can be housed inside. The tray can be removed from the front which means easy maintenance. Also, this tray can be combined also with a "Global" 3 phase rail in order to hang spotlights. For safety we recommend fising a braided cable from the profile base to the tray. Both profile and cover are available in 3.4m lengths. **We offer a 2 year guarantee on the profiles and covers.**

KRAKOVIA

with tray and "Global"
3-phase rail



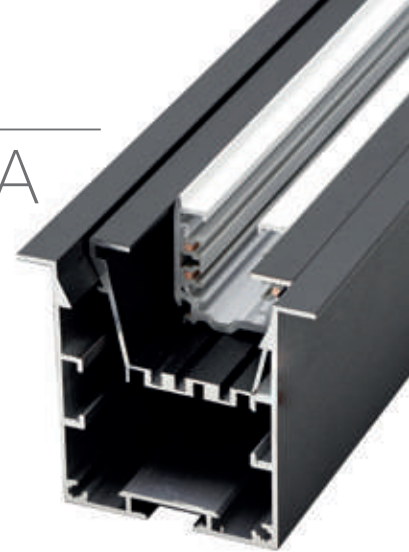
Aluminium profile

14.012 textured white 3.40m
14.013 textured black 3.40m



Aluminium tray

14.016 textured white 3.40m
14.017 textured black 3.40m



Trellis

16.019 textured white 3m
16.020 textured black 3m



Joint between profiles

22.044 steel set of 2 units



Aluminium endcaps

19.202 white
19.203 black



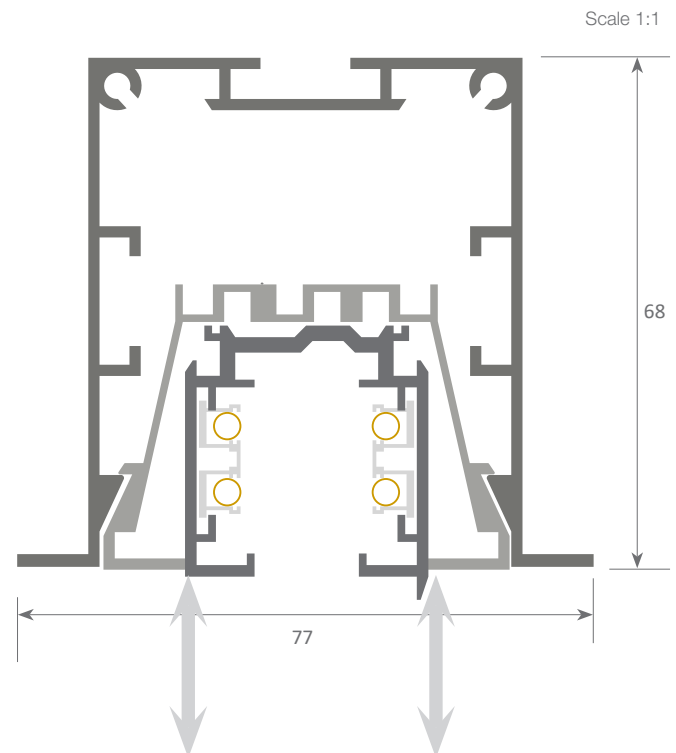
Fixing bracket

20.047 steel



Safety cable

22.039 steel 18 cm



System with front removable tray which permits easy access to the led strip and power supply, therefore allowing very fast and simple maintenance of the electrical installation.



Aluminium alloy extrusion process in accordance with: ISO 9001:2008 - ISO 14001 / Tolerances: UNE-EN 755-9 / UNE-EN 12020-2
Theoretical weight: 1.202Kg / Alloy: 6060 / Perimeter: 552mm / Anodising minimum: 15 microns
Purity aluminium: 95-98% / Treatment: T-5

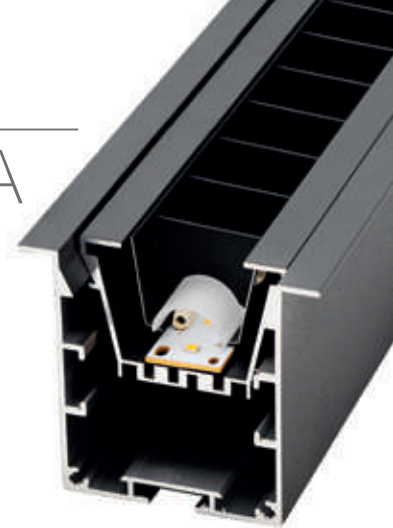
led profile by Luz Negra

Our PROFESSIONAL led profile series for recessing applications is manufactured in high purity aluminium and lacquered in white or textured black. Drivers can be housed inside. The internal tray allows us to screw the rigid led strip on one side and enables us to house the power supply on the other. At the same time this tray can be removed from the front which means easy maintenance. For safety we recommend fising a braided cable from the profile base to the tray. Both profile and cover are available in 3.4m lengths.

We offer a 2 year guarantee on the profiles and covers.

KRAKOVIA

with tray and trellis



Aluminium profile

14.012 textured white 3.40m
14.013 textured black 3.40m



Aluminium tray

14.016 textured white 3.40m
14.017 textured black 3.40m



Trellis

16.016 textured white 1.124m
16.017 textured black 1.124m



Joint between profiles

22.044 steel set of 2 units



Aluminium endcaps

19.202 white
19.203 black



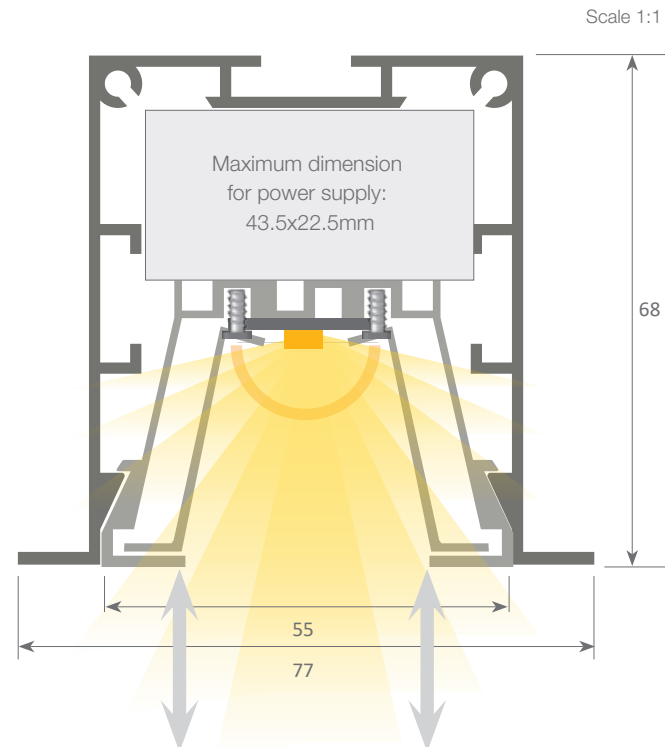
Fixing bracket

20.047 steel



Safety cable

22.039 steel 18cm



System with front removable tray which permits easy access to the led strip and power supply, therefore allowing very fast and simple maintenance of the electrical installation.



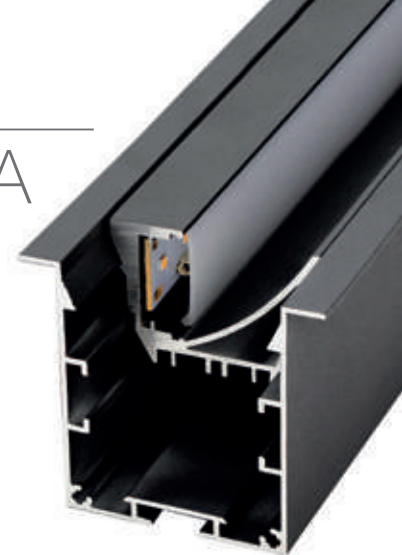
Aluminium alloy extrusion process in accordance with: ISO 9001:2008 - ISO 14001 / Tolerances: UNE-EN 755-9 / UNE-EN 12020-2
Theoretical weight: 1.202Kg / Alloy: 6060 / Perimeter: 552mm / Anodising minimum: 15 microns
Purity aluminium: 95-98% / Treatment: T-5

Our PROFESSIONAL led profile series for recessing applications is manufactured in high purity aluminium and lacquered in textured white, black and grey. Drivers can be housed inside. The internal tray allows us to screw the 20mm rigid led strip on one side and enables us to house the power supply on the other. At the same time this tray can be removed from the front which means easy maintenance. For safety we recommend the fixing of a braided cable from the profile base to the dissipation tray. Both profile and cover are available in 3.4 metre lengths.

We offer a 2 year guarantee on the profiles and covers.

KRAKOVIA

ASYMMETRIC



Aluminium profile

14.011	textured grey	3.40m
14.012	textured white	3.40m
14.013	textured black	3.40m



Aluminium tray

14.022	textured white	3.40m
14.023	textured black	3.40m
14.024	textured grey	3.40m



Polycarbonate cover

18.079	frosted	3.40m
--------	---------	-------



Joint between profiles

22.044	steel	set of 2 units
--------	-------	----------------



Aluminium endcaps

19.201	grey
19.202	white
19.203	black



Fixing bracket

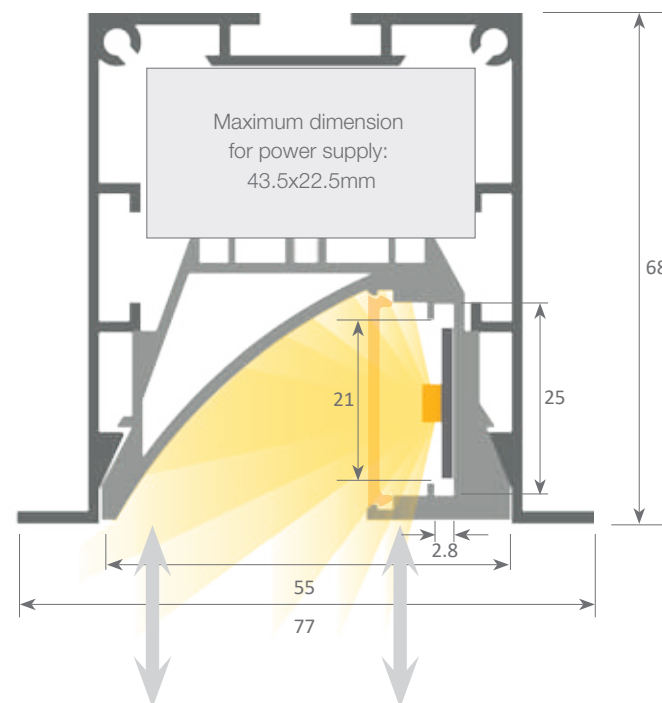
20.047	steel
--------	-------



Safety cable

22.039	steel	18cm
--------	-------	------

Scale 1:1



System with front removable tray which permits easy access to the led strip and power supply, therefore allowing very fast and simple maintenance of the electrical installation.



Aluminium alloy extrusion process in accordance with: ISO 9001:2008 - ISO 14001 / Tolerances: UNE-EN 755-9 / UNE-EN 12020-2
Theoretical weight: 1.202Kg / Alloy: 6060 / Perimeter: 552mm / Anodising minimum: 15 microns
Purity aluminium: 95-98% / Treatment: T-5

led profile by Luz Negra

Our PROFESSIONAL led profile series for recessing is manufactured in high purity aluminium and lacquered in textured white or grey. We recommend combining this profile with our frosted white cover. This is a large profile which has been designed to hold double rigid led strips in order to achieve high levels of luminosity (especially indicated for shopping malls, supermarkets, etc). Drivers can be housed inside.

Profile and cover are available in lengths of 3.4 metres.

We offer a 2 year guarantee on profiles and covers.

ANDORRA



Aluminium profile

14.020	textured grey	3.40m
14.021	textured white	3.40m
14.039	textured black	3.40m



Inner plate

22.045	aluminium	200cm
--------	-----------	-------



Polycarbonate cover

18.080	frosted	3.40m
--------	---------	-------



Joint between profiles

22.044	steel	set of 2 units
--------	-------	----------------



Aluminium endcaps

19.204	grey
19.205	white
19.351	black



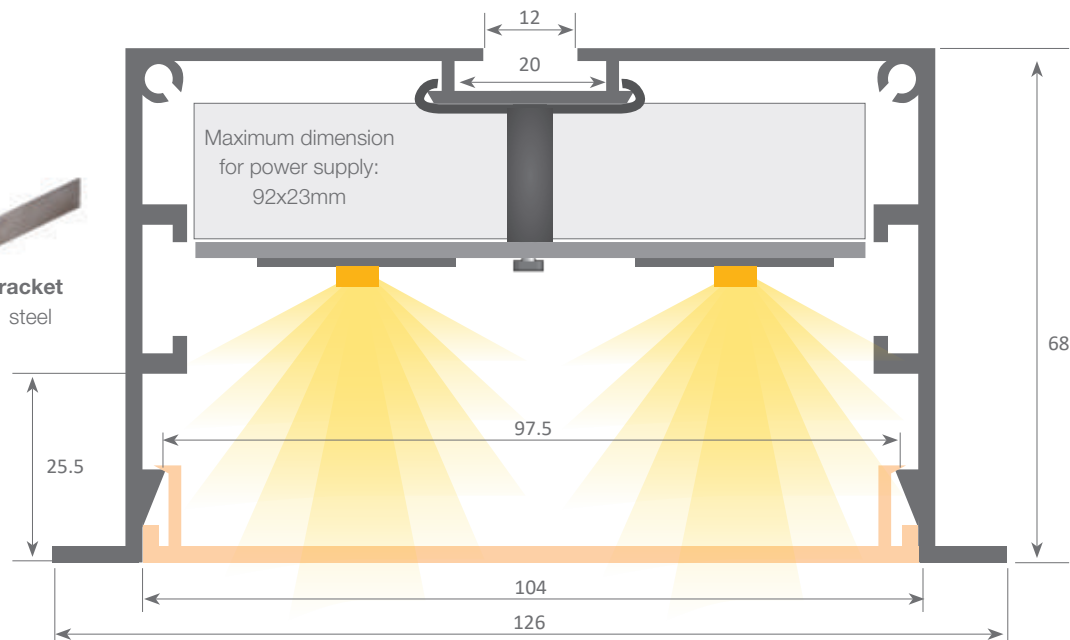
Plate support

22.047	steel
--------	-------



Fixing bracket

20.048	steel
--------	-------



Aluminium alloy extrusion process in accordance with: ISO 9001:2008 - ISO 14001 / Tolerances: UNE-EN 755-9 / UNE-EN 12020-2
Theoretical weight: 1.399kg / Alloy: 6060 / Perimeter: 650mm / Anodising minimum: 15 microns / Purity aluminium: 95-98% / Treatment: T-5