

MILANO



IP65

Our PROFESSIONAL led profile series for surfaces (only 7mm high) is manufactured in high purity anodised in silver, black and textured white lacquered (the profile can also be supplied in raw aluminium with no coating of paint).

The profile is ideal for using on wall surfaces, furniture, shelves and similar areas, where we require a minimalist profile with very reduced dimensions.

Its cover (available in 9 different finishes), has our "easy-ON" system. Once combined with this profile, it provides an IP65 rating to the luminaire.

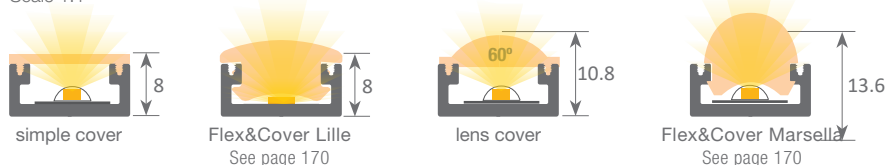
This can be used in places with high levels of humidity, for example bathrooms, kitchens, gyms, spas, cold storage chambers, fridges, and others.

The profile and its covers are available in lengths of 2 and 6 metre, thus allowing us to carry out large projects where all profiles do not have joints or similar surface breaks.

It is suitable for led strips with a maximum length of 12mm, whose power level does not exceed 20W/m. In order to obtain a more homogeneous and diffused illumination, we recommend the combined use of our opal cover with Canovelles-Barcelona-Gomera-COB ecoled strips.

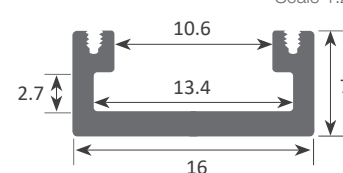
We offer a 10 year guarantee on the profiles and a 4 year guarantee on the covers.

Scale 1:1



When applying the lens cover on the Milano profile with the flexible led strip we get a beam of 60° light.

Scale 1:2



Aluminium profile

01.001	anodised silver	2m
01.002	anodised black	2m
01.024	white lacquered*	2m
01.004	anodised silver	6m
01.005	anodised black	6m
01.023	white lacquered*	6m

* This profile in white lacquered is not compatible with the easy-ON cover.



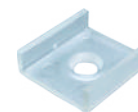
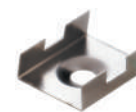
Plastic endcaps

19.001	grey without hole
19.002	grey with hole
19.003	black without hole
19.004	black with hole
19.449	white with hole
19.450	white without hole



Plastic endcaps

19.005	grey without hole lens
19.006	grey with hole lens



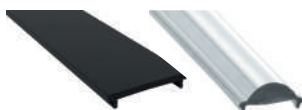
Clip

20.001	chrome steel
20.002	black oxide finish
20.066	transparent plastic



Polycarbonate cover "easy-ON"

18.001	transparent	2m
18.002	opal	2m
18.003	frosted	2m
18.004	transparent	6m
18.005	opal	6m
18.006	frosted	6m
18.134	frosted	60m

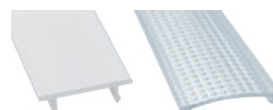


Black&White cover "easy-ON"

18.007	Black&White	2m
18.008	opaque grey	2m
18.009	Black&White	6m

Polycarbonate cover "easy-ON"

18.010	lens	2m
18.011	lens	6m



Polycarbonate cover

18.140	frosted	2m
18.139	frosted	6m

Compatible with profiles in white

Polycarbonate cover "easy-ON"

18.136	microprism	2m
18.135	microprism	6m



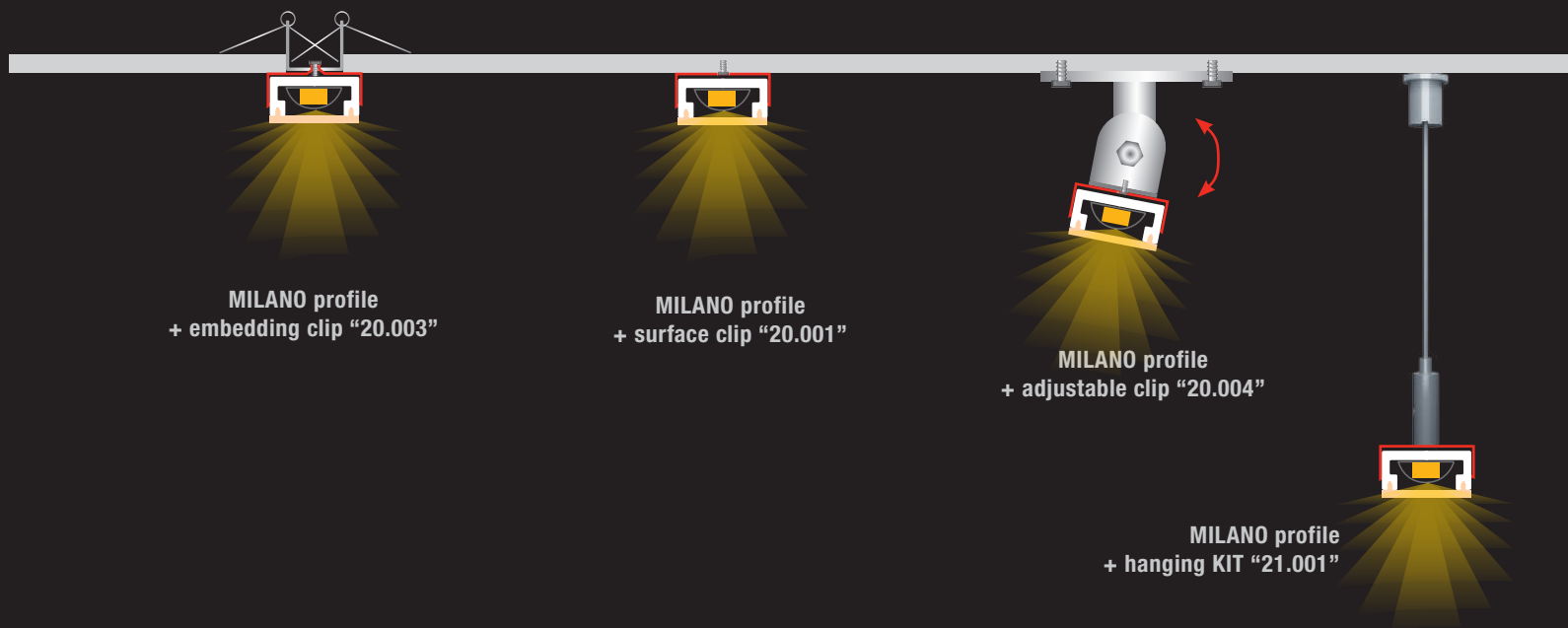
Methacrylate UV cover "easy-ON"

18.179	frosted	2m
18.178	frosted	6m



Patente Europea
Nº.: 13156605.1

Aluminium alloy extrusion process in accordance with: ISO 9001:2008 - ISO 14001 / Tolerances defined by: UNE-EN 755-9 / UNE-EN 12020-2 Theoretical weight: 0.118kg / Alloy: 6063 / Perimeter: 67mm / Anodising minimum: 15 microns
Aluminium purity: 95-98% / Material treatment: T-5 / Covers: Fireproof V0



Embedding clip
20.003 chrome steel
(clip not included)



Adjustable bracket
20.004 chrome steel
(clip not included)



Hanging KIT
21.001 chrome set of 2 units
21.002 white set of 2 units
21.003 black set of 2 units
(clip not included)



90° angle bracket
22.001 steel (52x13mm)

