

Our BASIC led profile series for recessing is manufactured in high purity aluminium and available in anodised silver and black aluminium (on demand, we can supply different anodised and lacquered finishings). Ideal for embedding in furniture, shelving and similar, where we require a profile with a dot free effect.

Suitable for led strips with a maximum width of 5mm and a power not greater than 12W/m. We recommend using it with our Cies ecoled strips.

We offer a 2 year guarantee on our profiles and covers.

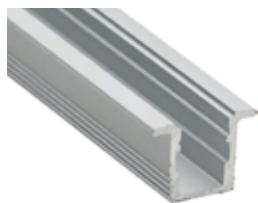
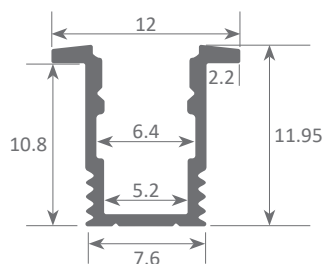
PHILADELPHIA MINI



Scale 1:1



Scale 1:2



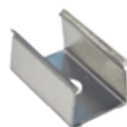
Aluminium profile

04.024	anodised black	3m
04.025	anodised silver	2m
04.016	anodised black	3m



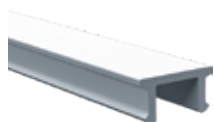
Plastic endcaps

19.217	with hole
19.218	without hole
19.289	black with hole
19.290	black without hole



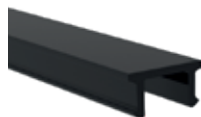
Grapa

20.049	stainless steel
--------	-----------------



Polycarbonate cover

18.154	frosted	2m
18.081	frosted	3m



Black&White cover

18.153	Black&White	2m
18.085	Black&White	3m



Patente Europea
Nº.: 13156605.1

Aluminium alloy extrusion process in accordance with: ISO 9001:2008 - ISO 14001 / Tolerances defined by: UNE-EN 755-9 / UNE-EN 12020-2
Alloy: 6063 / Anodising minimum: 15 microns
Aluminium purity: 95-98% / Material treatment: T-5 / Covers: Fireproof VØ