



led profiles for recessing



70 BOSTON



71 FRANKFURT



72 PHILADELPHIA



73 BERLIN



74 BERLIN XL



76 DALLAS



78 PHILADELPHIA
MINI

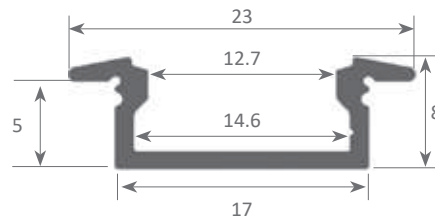
Our BASIC led profile series for recessing is manufactured in high purity aluminium and available in anodised silver, lacquered white and raw aluminium (on demand, we can supply different anodised and lacquered finishings). Ideal for embedding in furniture, shelves and similar. Suitable for led strips with a maximum width of 14mm and a power not greater than 15W/m, as there is no ventilation when embedded in wooden surfaces. We recommend using it with our Canovelles-Barcelona-Gomera-COB ecoled strips.

We offer a 2 year guarantee on our profiles and covers.

Scale 1:1



Scale 1:2



Aluminium profile

03.005	anodised silver	2m
03.006	white lacquered	2m
03.007	raw	2m
03.008	anodised silver	6m
03.009	white lacquered	6m
03.010	raw	6m



Plastic endcaps

19.051	white with hole
19.052	white without hole
19.053	grey with hole
19.054	grey without hole

* California's endcaps can also be used



Clip

20.005	transparent plastic
--------	---------------------



Methacrylate cover

18.014	transparent	2m
18.015	frosted	2m
18.116	opal	2m
18.018	opal	3m
18.016	transparent	6m
18.017	frosted	6m
18.115	opal	6m



90° angle bracket

22.001	steel (52x13mm)
--------	-----------------



Aluminium alloy extrusion process in accordance with: ISO 9001:2008 - ISO 14001 / Tolerances defined by: UNE-EN 755-9 / UNE-EN 12020-2
Theoretical weight: 0.127kg / Alloy: 6063 / Perimeter: 79mm / Anodising minimum: 15 microns
Aluminium purity: 95-98% / Material treatment: T-5 / Covers: methacrylate (greater protection against UV rays)

Our PROFESSIONAL led profile series for recessing (only 7.5mm high) is manufactured in high purity aluminium, silver and black anodised. Ideal for embedding in furniture, shelving and similar areas where we require a minimalist profile with very reduced dimensions.

Its "easy-ON" cover (available in 8 different finishings), when combined with this profile, provides an IP65 rating to the luminaire. Therefore, the profile can be used in places with high levels of humidity, for example bathrooms, kitchens, gyms, spas, cold storage chambers, fridges, and similar.

The profile and its covers are available in lengths of 2 and 6 metres, allowing us to carry out large projects where all the profiles do not have breaks. It is suitable for led strips with a maximum width of 12mm and a power not greater than 15W/m, as there is no ventilation when embedded in wooden surfaces. We recommend using it with our Canovelles-Barcelona-Gomera-COB ecoled strips.

We offer a 10 year guarantee on the profiles and a 4 year guarantee on the covers.

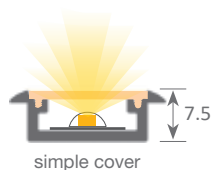
FRANKFURT



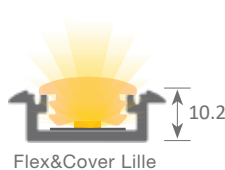
IP65



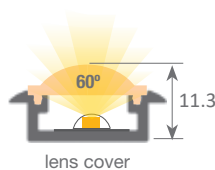
Scale 1:1



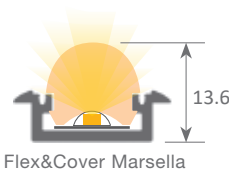
simple cover



Flex&Cover Lille
See page 170

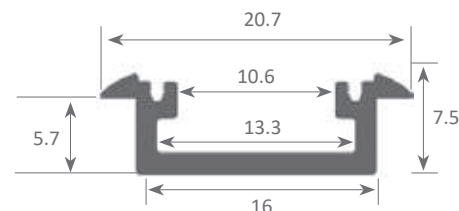


lens cover



Flex&Cover Marsella
See page 170

Scale 1:2



When applying the lens cover on the Frankfurt profile together with the flexible led strip we get a beam of 60° light.



Aluminium profile

03.001	anodised silver	2m
03.002	anodised black	2m
03.003	anodised silver	6m
03.004	anodised black	6m



Plastic endcaps

19.048	grey
19.049	black

* Milano's endcaps can also be used



Plastic endcaps

19.050	grey for lens
--------	---------------



Clip

20.001	chrome steel
20.002	black oxide finish



Polycarbonate cover "easy-ON"

18.001	transparent	2m
18.002	opal	2m
18.003	frosted	2m
18.004	transparent	6m
18.005	opal	6m
18.006	frosted	6m



Black&White cover "easy-ON"

18.007	Black&White	2m
18.008	opaque grey	2m
18.009	Black&White	6m



Polycarbonate cover "easy-ON"

18.010	lens	2m
18.011	lens	6m



90° angle bracket

22.001	steel (52x13mm)
--------	-----------------



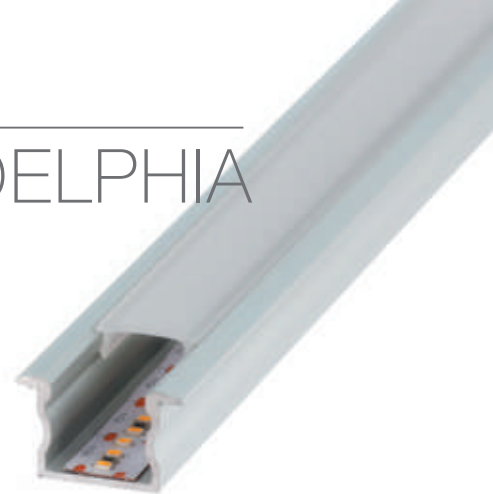
Patente Europea
Nº.: 13156605.1

Aluminium alloy extrusion process in accordance with: ISO 9001:2008 - ISO 14001 / Tolerances defined by: UNE-EN 755-9 / UNE-EN 12020-2
Theoretical weight: 0.138kg / Alloy: 6063 / Perimeter: 77mm / Anodising minimum: 15 microns
Aluminium purity: 95-98% / Material treatment: T-5 / Covers: Fireproof V0

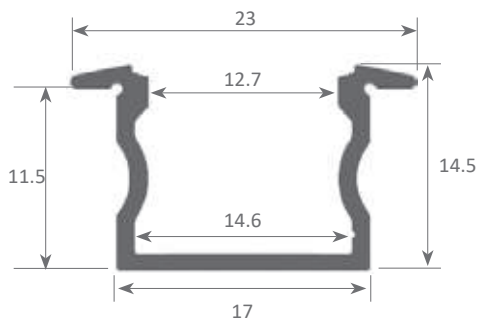
Our BASIC led profile series for recessing is manufactured in high purity aluminium and available in anodised silver, lacquered white and raw aluminium (on demand, we can supply different anodised and lacquered finishings). Ideal for embedding in furniture, shelving and similar, where we require a profile with a dot free effect.

Suitable for led strips with a maximum width of 14mm and a power not greater than 16W/m. We recommend using it with our Canovelles-Barcelona-Gomera-COB ecoled strips.

We offer a 2 year guarantee on our profiles and covers.



Scale 1:2



Scale 1:1



Aluminium profile

04.009	anodised silver	2m
04.010	white lacquered	2m
04.011	raw	2m
04.012	anodised silver	6m
04.013	white lacquered	6m
04.014	raw	6m



Plastic endcaps

19.061	white with hole
19.062	white without hole
19.063	grey with hole
19.064	grey without hole

* New York's endcaps can also be used



Methacrylate cover

18.014	transparent	2m
18.015	frosted	2m
18.116	opal	2m
18.018	opal	3m
18.016	transparent	6m
18.017	frosted	6m
18.115	opal	6m



Clip

20.005	transparent plastic
--------	---------------------



Aluminium alloy extrusion process in accordance with: ISO 9001:2008 - ISO 14001 / Tolerances defined by: UNE-EN 755-9 / UNE-EN 12020-2
Theoretical weight: 0.176kg / Alloy: 6063 / Perimeter: 105mm / Anodising minimum: 15 microns
Aluminium purity: 95-98% / Material treatment: T-5 / Covers: methacrylate (greater protection against UV rays)

led profile by Luz Negra

Our PROFESSIONAL led profile series for recessing is manufactured in high purity aluminium, silver anodised and black. Ideal for embedding in furniture, shelving and similar areas where we require a profile with a dot free effect.

Its "easy-ON" cover (available in 8 different finishings), when combined with this profile, provides an IP65 rating to the luminaire. Therefore, the profile can be used in places with high levels of humidity, such as bathrooms, kitchens, gyms, spas, cold storage chambers, fridges, or similar.

This profile and its covers are available in lengths of 2 and 6 metres, allowing us to carry out large projects where all the profiles do not need breaks. It is suitable for led strips with a maximum width of 12mm and a power not greater than 15W/m, as there is no ventilation when embedded in wooden surfaces. We recommend using it with our Canovelles-Barcelona-Gomera-COB ecoled strips.

We offer a 10 year guarantee on the profiles and a 4 year guarantee on the cover.

BERLIN

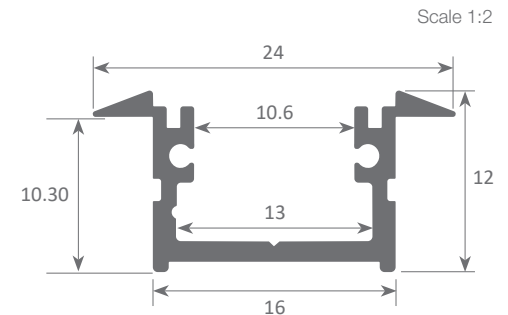
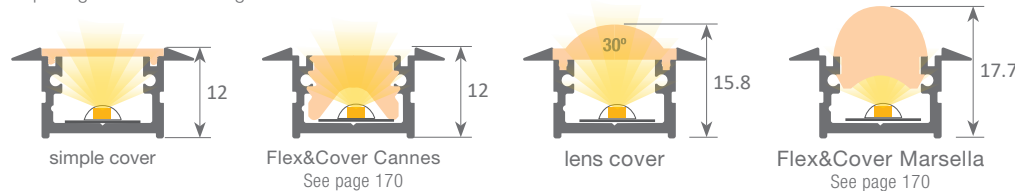


IP65



Scale 1:1

By applying the lens cover on the Berlin profile together with the flexible led strip we get a beam of 30° light.



Aluminium profile

04.001	anodised silver	2m
04.002	anodised black	2m
04.003	anodised silver	6m
04.004	anodised black	6m



Plastic endcaps

19.055	grey
19.056	black

* Roma endcaps can also be used



Plastic endcaps

19.057	grey for lens
19.058	black for lens



Clip

20.007	chrome steel
20.008	black oxide finish



Polycarbonate cover "easy-ON"

18.001	transparent	2m
18.002	opal	2m
18.003	frosted	2m
18.004	transparent	6m
18.005	opal	6m
18.006	frosted	6m



Black&White cover "easy-ON"

18.007	Black&White	2m
18.008	opaque grey	2m
18.009	Black&White	6m



Polycarbonate cover "easy-ON"

18.010	lens	2m
18.011	lens	6m



Aluminium alloy extrusion process in accordance with: ISO 9001:2008 - ISO 14001 / Tolerances defined by: UNE-EN 755-9 / UNE-EN 12020-2
Theoretical weight: 0.167kg / Alloy: 6063 / Perimeter: 108mm / Anodising minimum: 15 microns
Aluminium purity: 95-98% / Material treatment: T-5 / Covers: Fireproof V0

Our PROFESSIONAL led profile series for recessing is manufactured in high purity silver anodised aluminium. Ideal for embedding in furniture, shelving and similar areas where a width greater than the standard is required. This allows us to use wider led strips for an increased heat dissipation and a wider angle of light emission.

Its cover (available in 8 different finishings), when combined with this profile, provides an IP65 rating to the luminaire. Therefore, the profile can be used in places with high levels of humidity, such as bathrooms, kitchens, gyms, spas, cold storage chambers, fridges and similar.

This profile and its covers are available in lengths of 2 and 6 metres, allowing us to carry out large projects where all the profiles do not need breaks. It is suitable for led strips with a maximum width of 15mm and a power not greater than 15W/m, as there is no ventilation when embedded in wooden surfaces. We recommend using it with our Canovelles-Barcelona-Gomera-COB ecoled strips.

We offer a 10 year guarantee on the profiles and a 4 year guarantee on the cover.

BERLIN XL

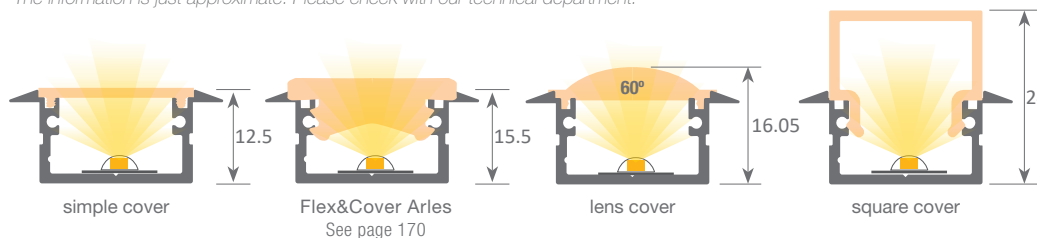


IP65

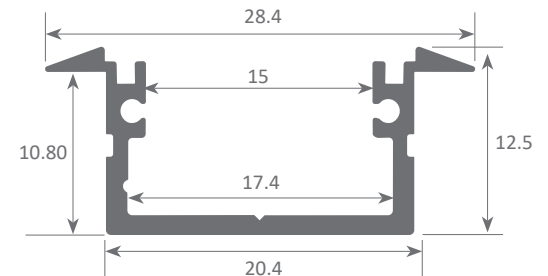


Scale 1:1

By applying the lens cover on the Berlin XL profile together with the flexible led strip we get a beam of 60° light. The information is just approximate. Please check with our technical department.



Scale 1:2



Aluminium profile

04.005	anodised silver	2m
04.006	anodised black	2m
04.007	anodised silver	6m
04.008	anodised black	6m



Plastic endcaps

19.059	grey without hole*
19.060	grey with hole*
19.320	black with hole
19.321	black without hole

*Roma XL endcaps can also be used



Endcaps for square cover

19.026	without hole (white)
19.027	without hole (black)



Clip

20.009	chrome steel
20.010	black oxide finish



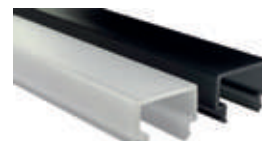
Polycarbonate cover "easy-ON"

18.022	transparent	2m
18.023	opal	2m
18.024	frosted	2m
18.025	transparent	6m
18.026	opal	6m
18.027	frosted	6m



Black&White cover "easy-ON"

18.028	Black&White	2m
18.030	lens	2m
18.029	Black&White	6m
18.031	lens	6m



Square cover

18.032	frosted	2m
18.102	Black&White	2m
18.033	frosted	6m
18.034	Black&White	6m



90° angle bracket

22.001	steel (52x13mm)
--------	-----------------



Patente Europea
Nº.: 13156605.1

Aluminium alloy extrusion process in accordance with: ISO 9001:2008 - ISO 14001 / Tolerances defined by: UNE-EN 755-9 / UNE-EN 12020-2
Theoretical weight: 0.187kg / Alloy: 6063 / Perimeter: 120mm / Anodising minimum: 15 microns
Aluminium purity: 95-98% / Material treatment: T-5 / Covers: Fireproof V0



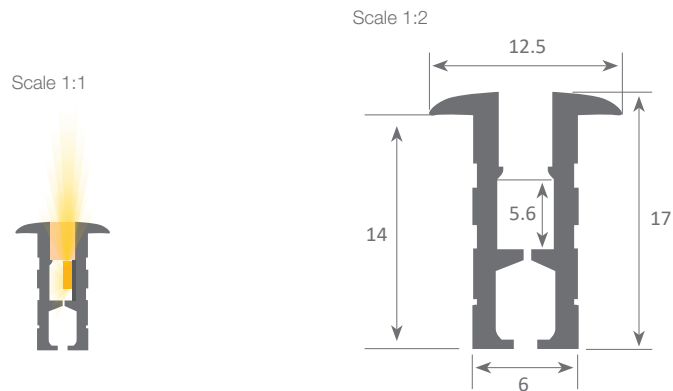
DALLAS

Our PROFESSIONAL led profile series for recessing and is only 6mm wide (with side wings 12mm). Manufactured in high purity aluminium and available in anodised silver, it stands out for being the thinnest solution for recessing and offers a visible light of only 2.5mm wide.

Mainly used for recessing in furniture, shelving and display units, where the line of light must be extremely thin.

It is an elegant and unique design only suitable for very thin side light led strips and we therefore recommend combining it with our Getafe ecoled strip.

We offer a 2 year guarantee on our profiles and covers.



Aluminium profile (set of 2)

03.011 anodised silver 2m



Methacrylate cover

18.041 opal 1m

(for easy installation we recommend fixing the cover with double-sided tape).



Aluminium alloy extrusion process in accordance with: ISO 9001:2008 - ISO 14001 / Tolerances defined by: UNE-EN 755-9 / UNE-EN 12020-2
Theoretical weight: 0.099 + 0.102kg / Alloy: 6063 / Perimeter: 49 + 51mm / Anodising minimum: 15 microns
Aluminium purity: 95-98% / Material treatment: T-5 / Covers: methacrylate (greater protection against UV rays)



Our BASIC led profile series for recessing is manufactured in high purity aluminium and available in anodised silver and black aluminium (on demand, we can supply different anodised and lacquered finishings). Ideal for embedding in furniture, shelving and similar, where we require a profile with a dot free effect.

Suitable for led strips with a maximum width of 5mm and a power not greater than 15W/m. We recommend using it with our Cies ecoled strips.

We offer a 2 year guarantee on our profiles and covers.

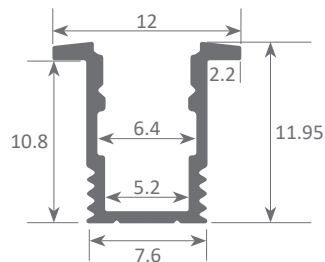
PHILADELPHIA MINI



Scale 1:1



Scale 1:2



Aluminium profile

04.015	anodised silver	3m
04.016	anodised black	3m



Plastic endcaps

19.217	with hole
19.218	without hole
19.289	black with hole
19.290	black without hole



Clip

20.050	chrome steel
--------	--------------



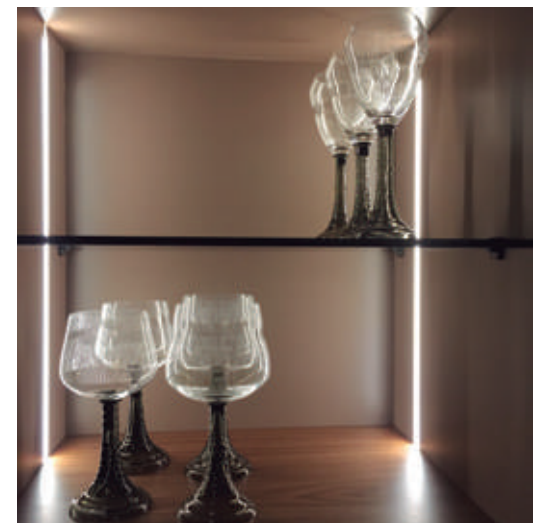
Polycarbonate cover

18.081	frosted	3m
--------	---------	----



Black&White cover

18.085	Black&White	3m
--------	-------------	----



Patente Europea
Nº.: 13156605.1

Aluminium alloy extrusion process in accordance with: ISO 9001:2008 - ISO 14001 / Tolerances defined by: UNE-EN 755-9 / UNE-EN 12020-2
Alloy: 6063 / Anodising minimum: 15 microns
Aluminium purity: 95-98% / Material treatment: T-5 / Covers: Fireproof V0

The difference is in the small details: small is big!!



In our catalogue you will find our new range of small, yet elegant profiles, perfect for a modern, minimalistic lighting. At Luz Negra we cover for all sizes. Meet the smaller members of our led profile family.

- Much more than small.
- Small, but by no means insignificant.
- Small profile, big inspiration.
- Small, simple yet seductive.
- The power of small.
- Minimalist elegance.



DETROIT See page 62



NEW YORK MINI See page 64



PHILADELPHIA MINI See page 78



NEON MICRO See page 176



NEON CUADRADO See page 178



NEON REDONDO See page 180



TEXAS MINI See page 88



DALLAS See page 76



CHICAGO See page 58