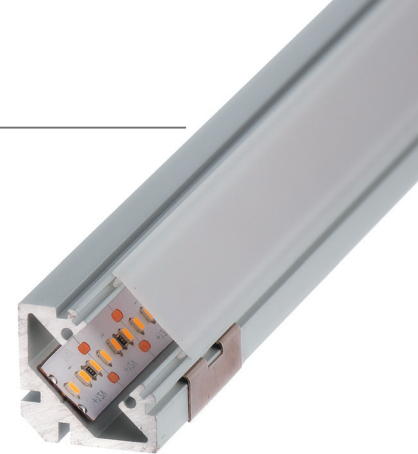


## SOPHIA



IP65



Our PROFESSIONAL led profile series for corners is manufactured in high purity anodised in silver, black and textured white lacquered. Ideal for wall surfaces, furniture, shelving and similar areas where we require an angled and continuous light emission along with optimum heat dissipation.

Its "easy-ON" cover (available in 8 different finishings), when combined with this profile, provides an IP65 rating to the luminaire. Therefore, the profile can be used in places with high levels of humidity, such as bathrooms, kitchens, gyms, spas, cold storage chambers, fridges, or others.

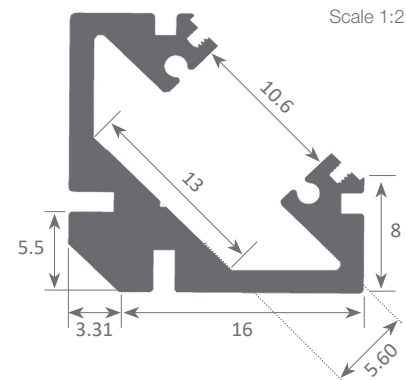
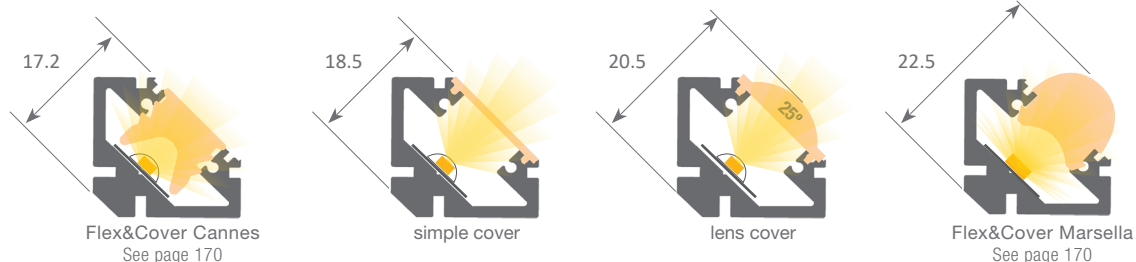
The profile and its covers are available in lengths of 2 and 6 metres, allowing us to carry out large projects where all the profiles do not need breaks. It is suitable for led strips with a maximum width of 13mm and a power not greater than 30W/m.

In order to obtain a more homogeneous and diffused illumination, we recommend the combined use of both our opal covers and Canovelles-Barcelona-Gomera-Cies ecoled strips.

**We offer a 10 year guarantee on the profiles and a 4 year guarantee on the cover.**

Scale 1:1

When applying the lens cover on the Sophia profile together with the flexible led strip we get a beam of 25° light.

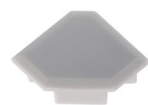


Scale 1:2



### Aluminium profile

05.001	anodised silver	2m
05.002	anodised black	2m
05.030	white lacquered*	2m
05.004	anodised silver	6m
05.005	anodised black	6m
05.029	white lacquered*	6m



### Plastic endcaps

19.065	grey without hole
19.066	grey with hole
19.067	black without hole
19.068	black with hole
19.451	white with hole
19.452	white without hole



### Plastic endcaps

19.069	grey without hole lens
19.070	grey with hole lens



### Hanging KIT

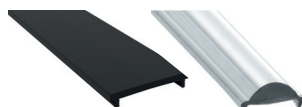
21.001	chrome	set of 2 units
21.002	white	set of 2 units
21.003	black	set of 2 units

(clip not included)



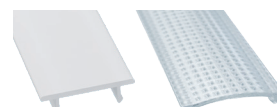
### Polycarbonate cover "easy-ON"

18.001	transparent	2m
18.002	opal	2m
18.003	frosted	2m
18.004	transparent	6m
18.005	opal	6m
18.006	frosted	6m
18.134	frosted	60m



### Black&White cover "easy-ON"

18.007	Black&White	2m
18.008	opaque grey	2m
18.009	Black&White	6m



### Polycarbonate cover

18.140	frosted	2m
18.139	frosted	6m

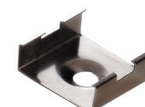
Compatible with profiles in white

### Polycarbonate cover "easy-ON"

18.010	lens	2m
18.011	lens	6m

### Polycarbonate cover "easy-ON"

18.136	microprism	2m
18.135	microprism	6m



### Clip

20.015	chrome steel
20.016	black oxide finish



### Methacrylate UV cover "easy-ON"

18.179	frosted	2m
18.178	frosted	6m



Patente Europea  
Nº.: 13156605.1

\* This profile in white lacquered is not compatible with the easy-ON cover.

Aluminium alloy extrusion process in accordance with: ISO 9001:2008 - ISO 14001 Tolerances defined by: UNE-EN 755-9 / UNE-EN 12020-2 / Theoretical weight: 0.338kg / Alloy: 6063 / Perimeter: 137mm / Anodising minimum: 15 microns / Aluminium purity: 95-98% / Material treatment: T-5 / Covers: Fireproof V0