

Our PROFESSIONAL led profile series, treadable and for indoor use is manufactured in high purity aluminium and available in anodised silver and black.

Its "easy-ON" cover, when combined with this profile, provides an IP65 rating. Therefore, the profile can be used in places with high levels of humidity, while also being highly durable to treading. Front lighting is achieved by placing a led strip with a maximum width of 14mm under the cover. Additionally, by means of a metal plate, we can obtain side lighting, thus ensuring a perfect dot free light emission. The step's lower area can also be illuminated by using a second led strip.

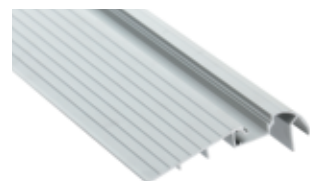
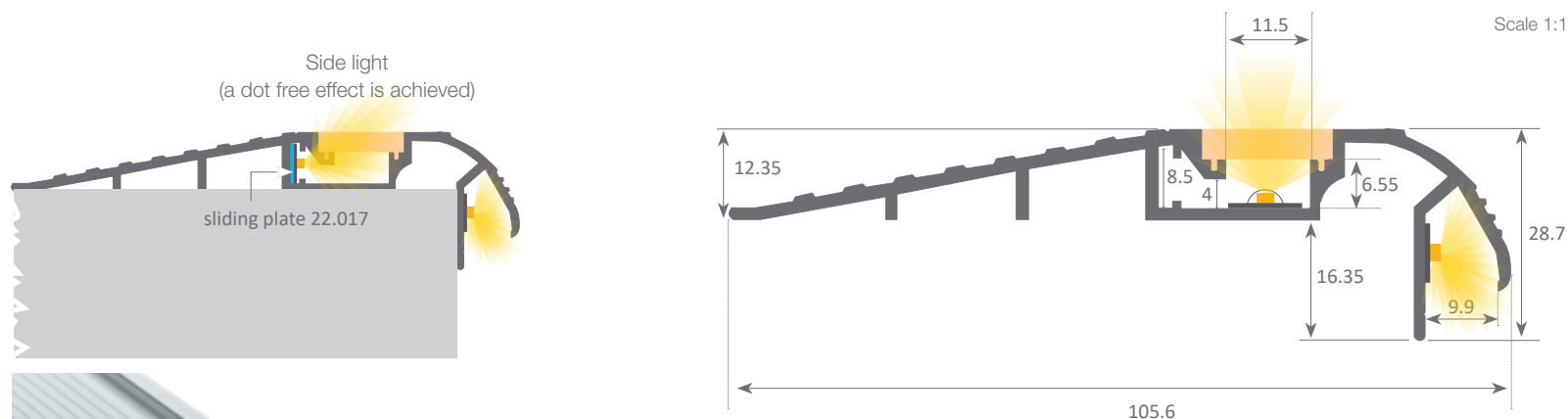
This profile and its cover are both available in lengths of 2 and 6 metres, allowing us to carry out large projects where all the profiles do not need joints. In order to avoid system malfunctions and potential failures, we recommend combining the profile with our Canovelles-Vizcaya led strips or similar products with our DUO waterproof system. For side lighting, we use a metal plate and we recommend the use of our Granada-Cies-Alicante or Avila ecoled strips with this profile.

We offer a 10 year guarantee on the profiles and a 4 year guarantee on the covers.

TOKYO



IP65



Aluminium profile

06.003	anodised silver	2m
06.004	anodised black	2m
06.005	anodised silver	6m
06.006	anodised black	6m

Plastic endcaps

19.111	grey	set of 2 units
19.112	black	set of 2 units



Polycarbonate cover IK10

18.012	frosted	2m
18.013	frosted	6m



Inner plate

22.017	aluminium	2m
--------	-----------	----



Patente Europea
Nº.: 13156605.1

Aluminium alloy extrusion process in accordance with: ISO 9001:2008 - ISO 14001 / Tolerances defined by: UNE-EN 755-9 / UNE-EN 12020-2
Theoretical weight: 0.813 kg / Alloy: 6063 / Perimeter: 384 mm / Anodising minimum: 15 microns
Aluminium purity: 95-98% / Material treatment: T-5 / Covers: Fireproof V0