

led profiles for walls





KENTUCKY

136



WASHINGTON

137



CLEVELAND

138



BURDEOS

140



ATLANTA SLIM

141



VENEZIA

142



MONACO

143



GALICIA

144



COMENZA
HANDRAIL

146

led profile by Luz Negra

Our PROFESSIONAL led profile series is manufactured in high purity aluminium and available in silver anodised. The profile is suitable for corridors and walls, where it offers Up&Down led lighting. Suitable for led strips with a maximum width of 12mm and a power not greater than 20W/m. In order to obtain a more homogeneous illumination, while also improving the dot free effect, we recommend combining it with our Canovelles-Barcelona-Gomera-COB ecoled led strips.

We offer a 2 year guarantee on our profiles and covers.

KENTUCKY



Aluminium profile
09.005 anodised silver 3m



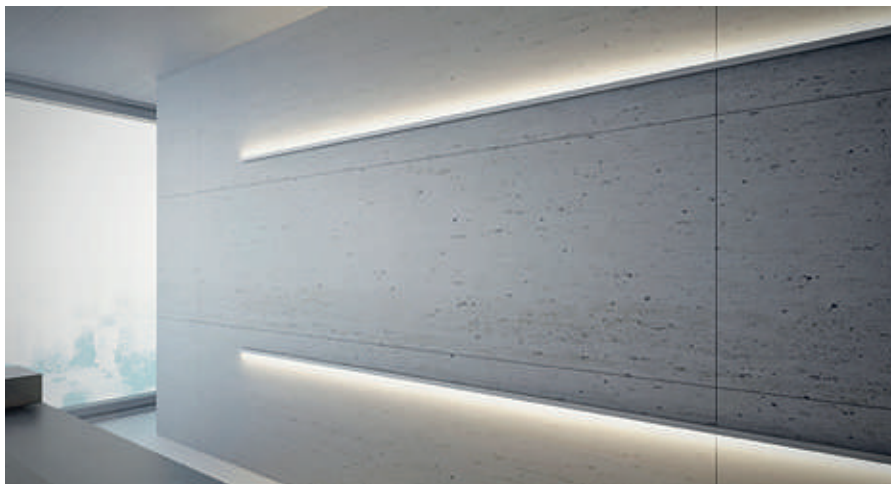
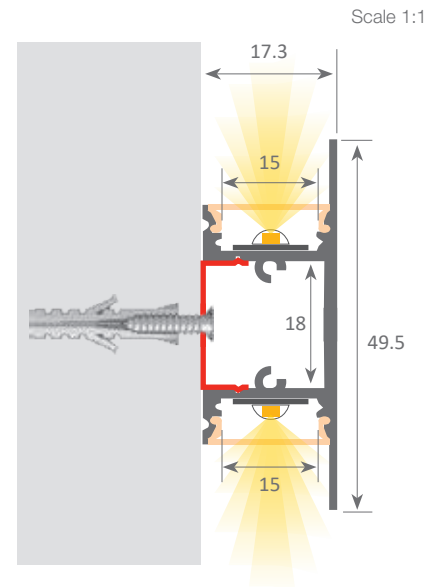
Aluminium endcaps
19.141 without hole



Polycarbonate cover
18.063 opal 3m



Clip
20.024 chrome steel



Option: aluminium skirting board



Aluminium alloy extrusion process in accordance with: ISO 9001:2008 - ISO 14001 / Tolerances defined by: UNE-EN 755-9 / UNE-EN 12020-2
Theoretical weight: 0.320kg / Alloy: 6063 / Perimeter: 135.5mm / Anodising minimum: 15 microns
Aluminium purity: 95-98% / Material treatment: T-5 / Covers: Fireproof V0

Our PROFESSIONAL led profile series is manufactured in high purity aluminium and available in silver anodised. The profile is suitable for aisles and walls, where it offers Up&Down led lighting. Its central channel houses the power supply and allows the cables to pass through for the circuit's closure, therefore reducing steep voltage drops.

Suitable for led strips with a maximum width of 25mm and a power not greater than 40W/m.

In order to obtain a more homogeneous illumination, while also improving the dot free effect, we recommend combining it with our Canovelles-Barcelona-Gomera-COB ecoled led strips. It can also be used with our rigid led strips.

We offer a 2 year guarantee on our profiles and covers.

WASHINGTON



Aluminium profile

09.006 anodised silver 3m



Polycarbonate cover

18.064 opal 3m



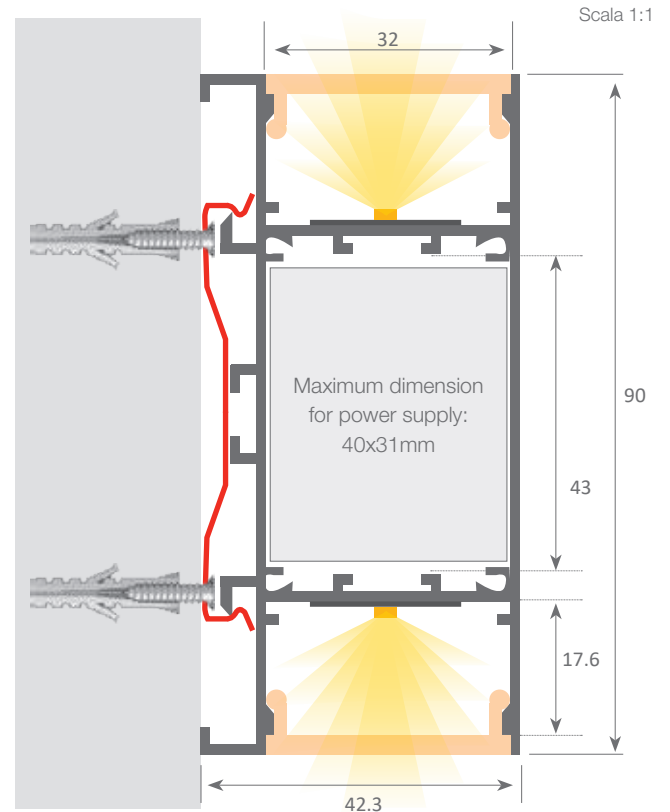
Plastic endcaps

19.142 grey without hole



Clip

20.025 chrome steel



Aluminium alloy extrusion process in accordance with: ISO 9001:2008 - ISO 14001

Tolerances defined by: UNE-EN 755-9 / UNE-EN 12020-2 / Theoretical weight: 1.450kg / Alloy: 6063

Perimeter: 641.4mm / Anodising minimum: 15 microns / Aluminium purity: 95-98% / Material treatment: T-5 / Covers: Fireproof V0

Our BASIC led profile series is manufactured in high purity aluminium and available in silver anodised. It is ideal for indirectly lighting up aisles and walls. It can also be used in drywalls and between wooden panels to indirectly light upwards and downwards.

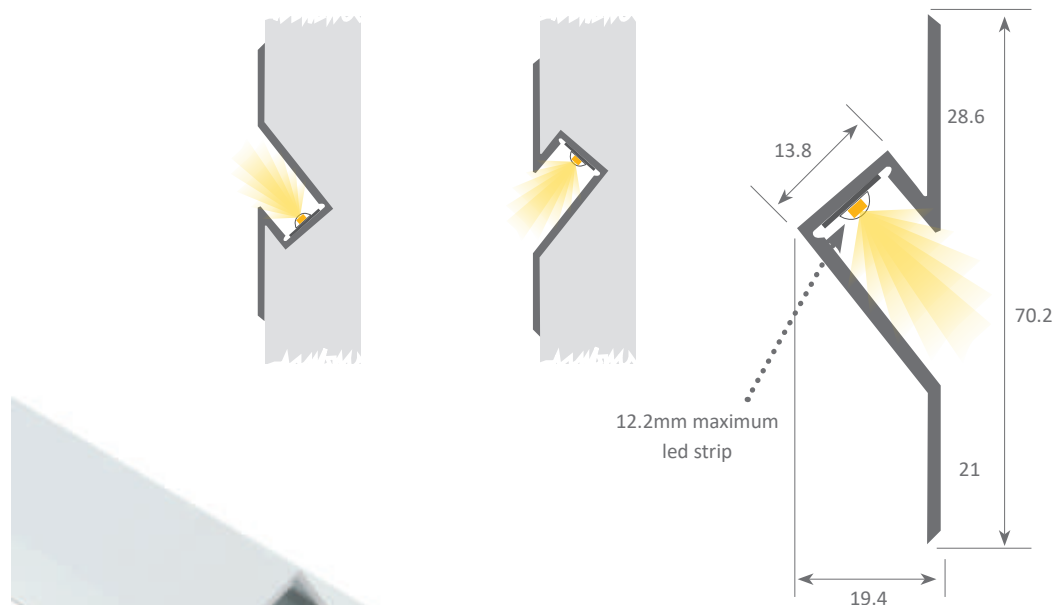
Suitable for led strips with a maximum width of 12mm and a power not greater than 20W/m.

In order to obtain a more homogeneous illumination, while also improving the dot free effect, we recommend combining it with our ecoled Canovelles-Barcelona-Gomera-COB ecoled strips.

We offer a 2 year guarantee.

CLEVELAND

Scale 1:1



Aluminium profile

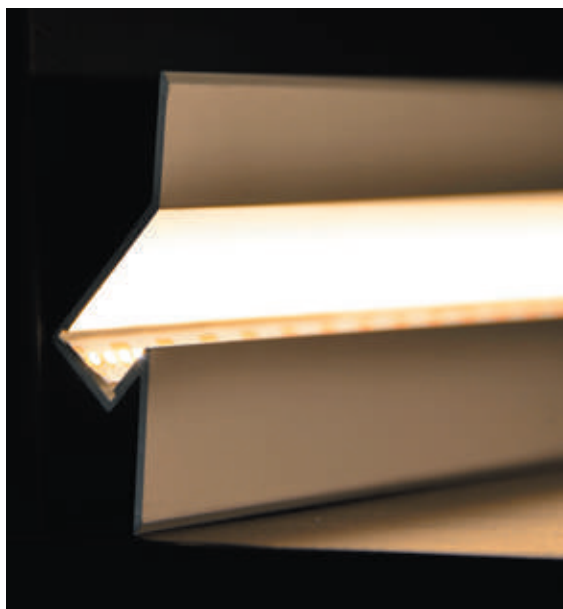
09.004 anodised silver 3m



Plastic endcaps

19.139 grey without hole

19.140 grey with hole



Aluminium alloy extrusion process in accordance with: ISO 9001:2008 - ISO 14001 / Tolerances defined by: UNE-EN 755-9 / UNE-EN 12020-2
Theoretical weight: 0.426kg / Alloy: 6063 / Perimeter: 201.4mm / Anodising minimum: 15 microns
Aluminium purity: 95-98% / Material treatment: T-5 / Covers: Fireproof V0



led profile by Luz Negra

Our BASIC led profile series is manufactured in white plastic and does not require a cover. It is ideal for indirectly lighting up furniture and display units.

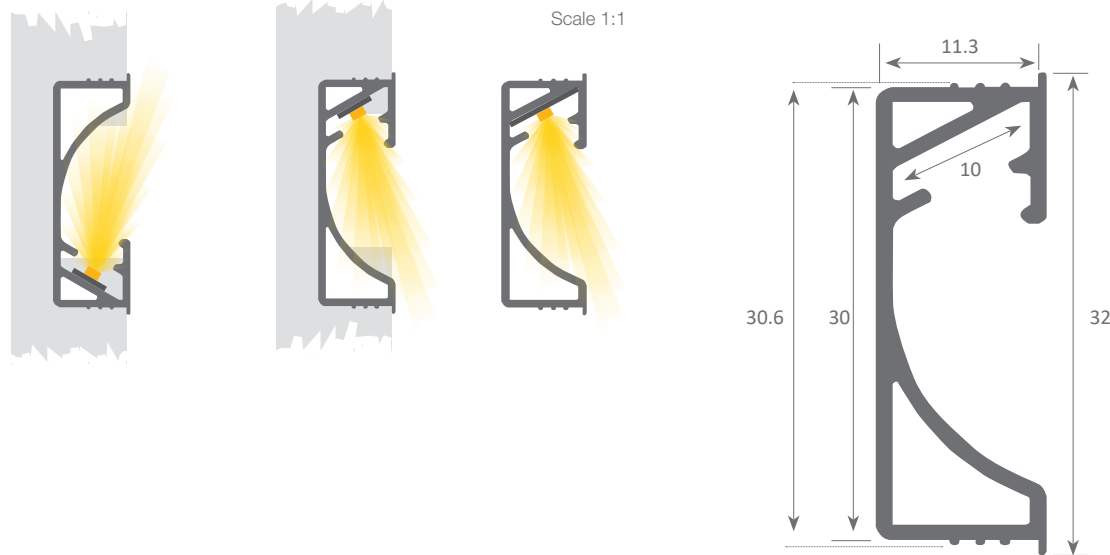
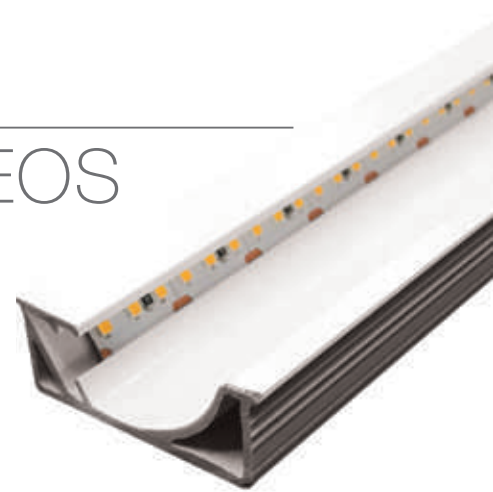
Once mounted, the profile can also be used between wooden panels to indirectly light upwards and downwards.

Suitable for led strips with a maximum width of 10mm and a power not greater than 16W/m. In order to obtain a more homogeneous illumination, we recommend combining it with our Cies ecoled strip.

We offer a 2 year guarantee.

BURDEOS

Scale 1:2



Plastic profile

09.003 white

2.60m



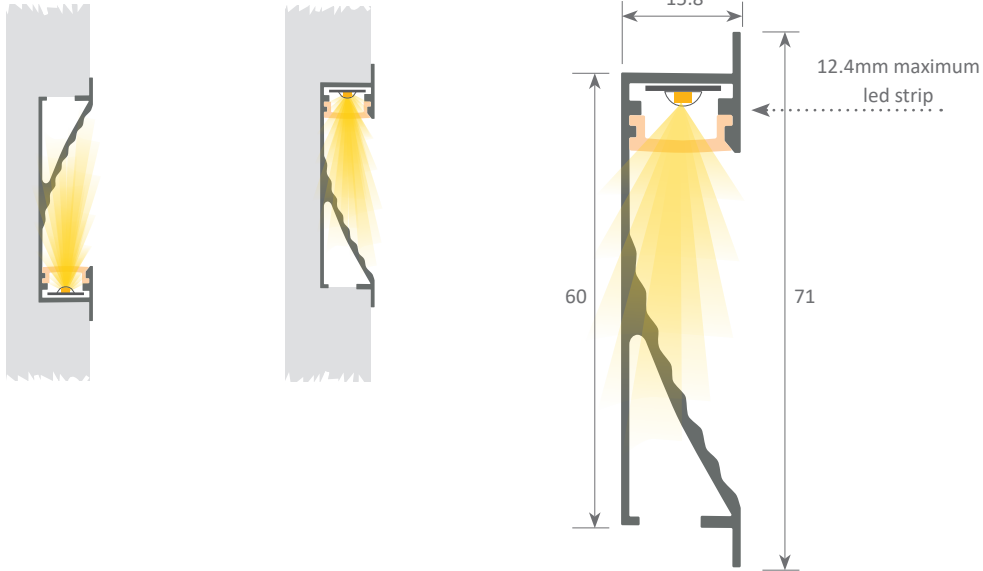
Our BASIC led profile series is manufactured in high purity aluminium and available in silver anodised. It is ideal for indirect lighting in walls and ceilings. It can be integrated into the wall, plasterboard or wooden panels to indirectly light upwards or downwards.

Suitable for led trips with a maximum width of 12mm and a power not greater than 20W/m. We recommend combining it with COB our Elite ecoled strip in order to achieve an homogeneous illumination, while also improving the dot free effect.

We offer a 2 year guarantee on our profiles and covers.

ATLANTA SLIM

Scale 1:1



Aluminium profile

09.002 anodised silver 3m



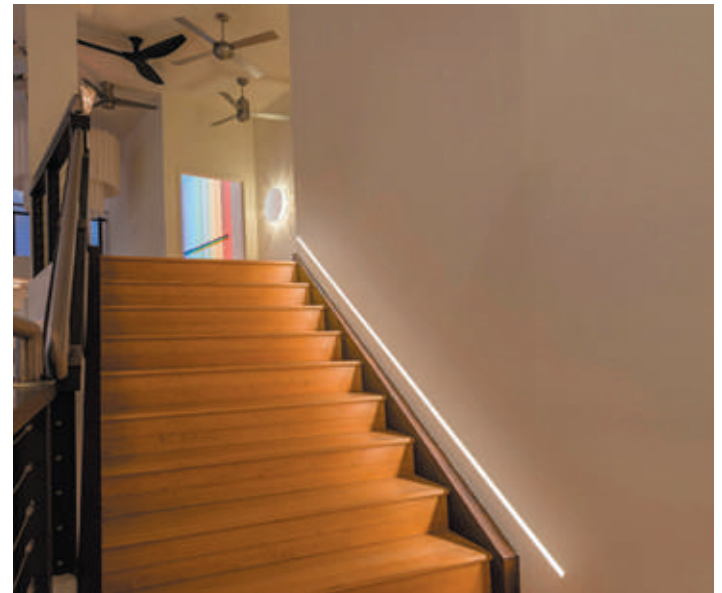
Plastic endcaps

19.138 left with hole set of 2 pieces
right without hole



Polycarbonate cover

18.062 opal 3m

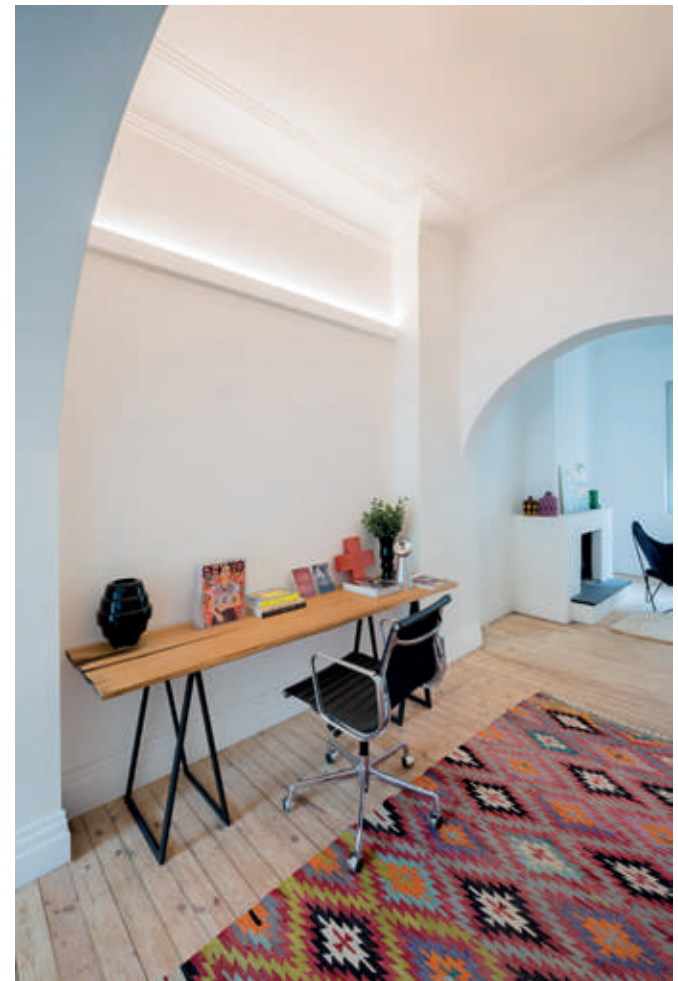
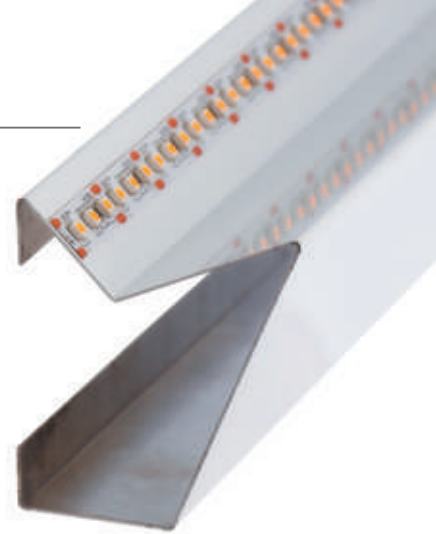
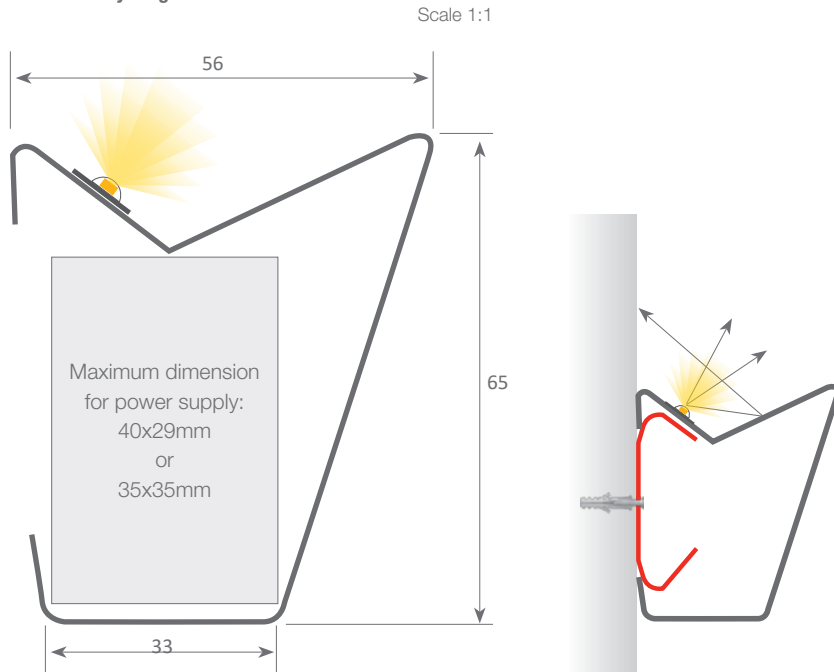


Aluminium alloy extrusion process in accordance with: ISO 9001:2008 - ISO 14001 / Tolerances defined by: UNE-EN 755-9 / UNE-EN 12020-2
Theoretical weight: 0.380kg / Alloy: 6063 / Perimeter: 265mm / Anodising minimum: 15 microns
Aluminium purity: 95-98% / Material treatment: T-5 / Covers: Fireproof V0

Our BASIC led profile series for wall applications is a folded aluminium profile and with a lacquered white finish. It is ideal for ceiling and ambience lighting. Drivers can be housed inside along with other types of cables, such as telephone, network or similar, allowing circuit closures and therefore avoiding voltage drops.

This profile is available in 2m lengths and suitable for using with our Vizcaya-Barcelona flexible ecoled strips.

We offer a 2 year guarantee.



Aluminium profile

09.007 white

2m



Plastic endcaps

19.143 white left endcap

19.144 white right endcap



Clip

20.026 chrome steel



Aluminum joint

22.021 joint between profiles



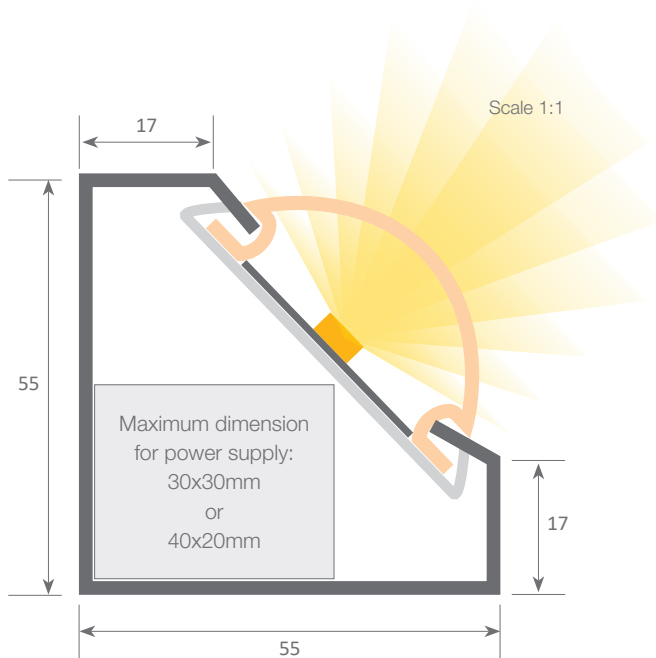
WARNING:

As this is not an extruded profile (manually folded profile) there are some tolerances in the final external measurements (mm). The dimensions therefore in this technical drawing are approximate.

Our BASIC led profile series for wall and ceiling applications is a folded aluminium profile lacquered in white. It is ideal for ceilings, walls and ambience lighting. Drivers can be housed inside along with other types of cables, such as telephone, network or similar, allowing circuit closures and therefore avoiding voltage drops.

Profile available in 2m lengths and designed for use with flexible or rigid led strips (with a maximum width of 20mm).

We offer a 2 year guarantee.



Aluminium profile

09.008 white 2m



PVC endcaps

19.145 white



Aluminium profile

02.028 white 2m



Methacrylate cover

18.040 frosted 2m



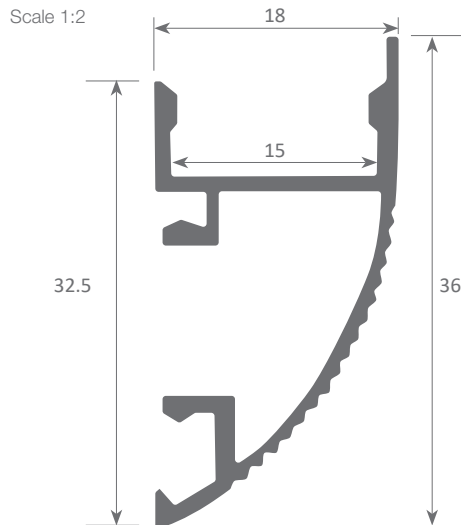
WARNING:

As this is not an extruded profile (manually folded profile) there are some tolerances in the final external measurements (mm). The dimensions therefore in this technical drawing are approximate.

Our PROFESSIONAL led profile series is manufactured in high purity aluminium and available in silver anodised. The profile is suitable for corridors and walls.

Suitable for led strips with a maximum width of 12mm and a power not greater than 20W/m. In order to obtain a more homogeneous illumination, while also improving the dot free effect, we recommend combining it with our Canovelles-Barcelona-Gomera-COB ecoled strips.

We offer a 2 year guarantee on our profiles and covers.



Aluminium profile

09.047	lacquered white	3m
09.048	lacquered silver	3m



Plastic endcaps

19.348	white without right hole
19.222	white without left hole
19.322	white without right hole
19.323	white without left hole



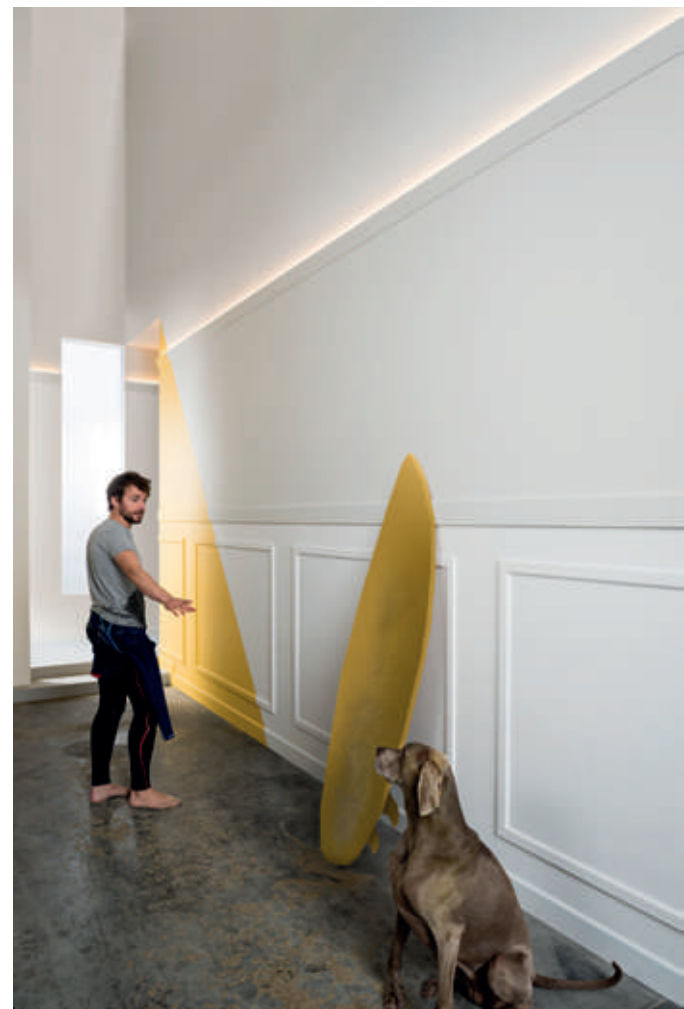
Polycarbonate cover

18.083	opal	3m
--------	------	----



Clip

20.052	chrome steel
--------	--------------



Aluminium alloy extrusion process in accordance with: ISO 9001:2008 - ISO 14001 / Tolerances defined by: UNE-EN 755-9 / UNE-EN 12020-2
Alloy: 6063 / Anodising minimum: 15 microns
Aluminium purity: 95-98% / Material treatment: T-5 / Covers: Fireproof V0



COMENZA HANDRAIL

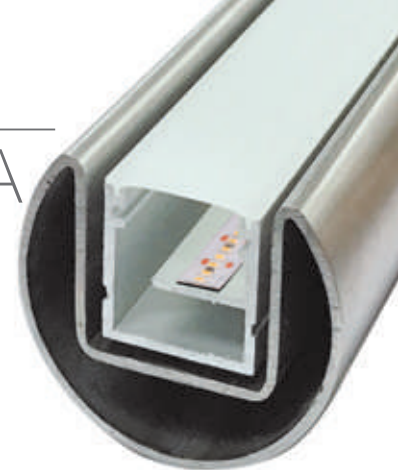
Our PROFESSIONAL led profile series for handrails, manufactured in polished stainless steel AISI 316 (on demand the profile and the rest of components can be supplied in a shiny finish). This profile allows us to incorporate led lighting by means of our Philadelphia or Versailles led profile (Versalles being the most recommended).

We also offer a wide range of accessories such as wall supports, endcaps and different types of joints. This steel profile is available in 5m lengths, which allows us to carry out long installations without needing any joints.

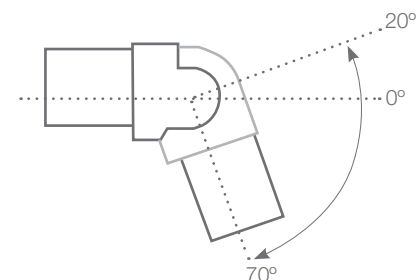
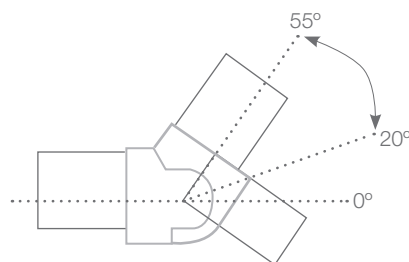
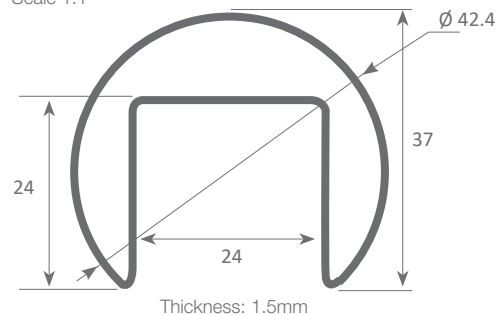
Suitable for led strips with a maximum width of 12mm and a power not greater than 20W/m.

In order to obtain a more homogeneous illumination, we recommend using our opal cover along with Canovelles-Barcelona-Gomera-COB ecoled led strips.

We offer a 2 year guarantee.



Scale 1:1



Stainless steel profile

12.008 polished stainless steel 5m



Corner connector

22.026 polished stainless steel



Wall support

22.027 polished stainless steel



Adjustable connector

22.028 polished stainless steel



Adjustable connector 55° / 20°

22.029 polished stainless steel



Joint

22.030 polished stainless steel



Closing endcap

19.152 polished stainless steel

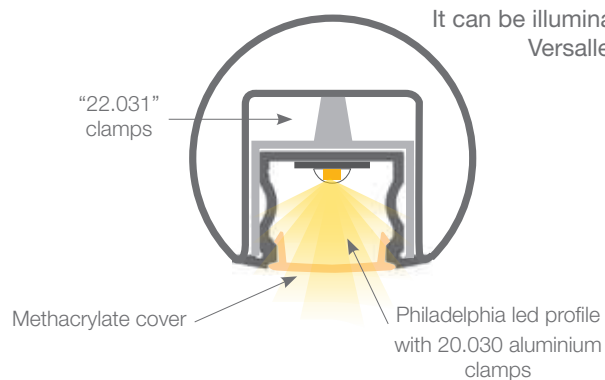
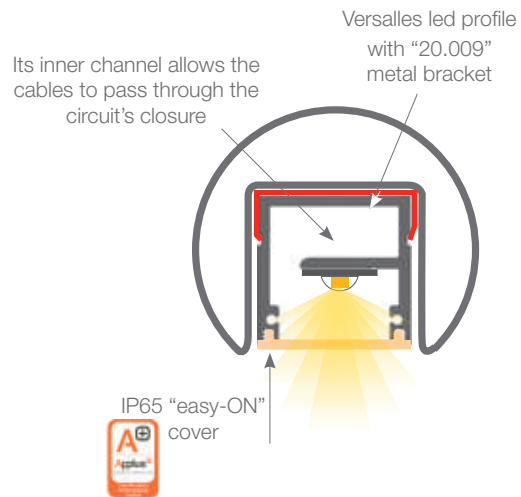


Regulations: Technical Building Code TBC by Applus
Handrail diameter: Ø 42mm / AISI 316 Stainless steel - resistant to corrosion and high temperatures



COMENZA led profile

COMENZA HANDRAIL



Philadelphia led profile

04.009	anodised silver	2m
04.010	white lacquered	2m
04.011	raw	2m
04.012	anodised silver	6m
04.013	white lacquered	6m
04.014	raw	6m



Versalles led profile

02.018	anodised silver	2m
02.019	anodised black	2m
02.020	anodised silver	6m
02.021	anodised black	6m



Internal handrail clamp

20.030	aluminium
--------	-----------



Clip for Versalles led profile

20.009	chrome steel
20.010	black oxide finish



Philadelphia cover

18.014	transparent	2m
18.015	frosted	2m
18.018	opal	3m
18.016	transparent	6m
18.017	frosted	6m



Versalles cover

18.022	transparent	2m
18.023	opal	2m
18.024	frosted	2m
18.025	transparent	6m
18.026	opal	6m
18.027	frosted	6m



18.030	lens	2m
18.031	lens	6m





COMENZA led profile