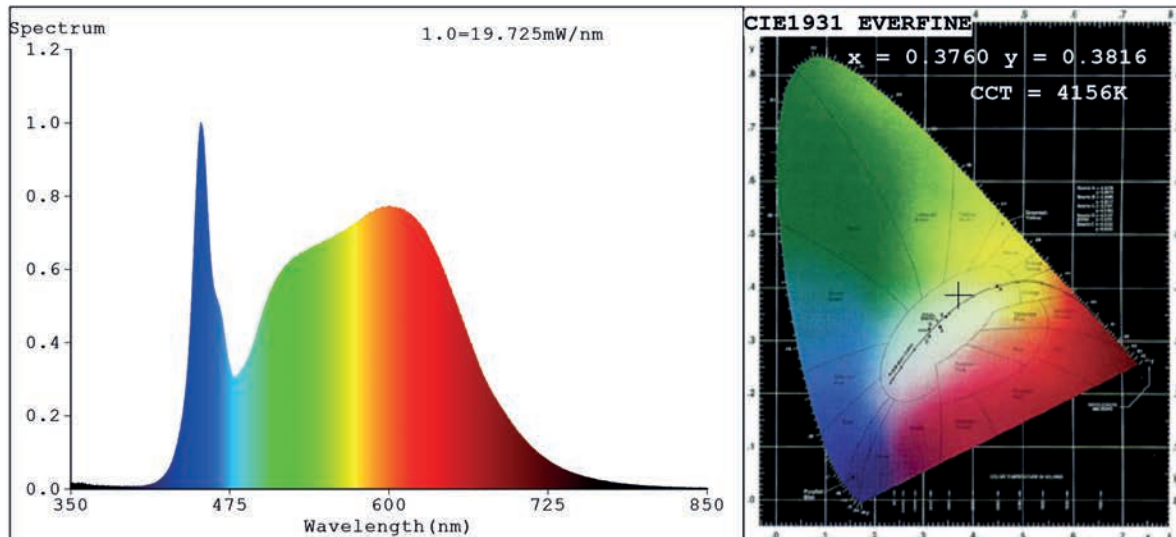


Spectrum Test Report



Color Parameters:

Chromaticity Coordinate: $x=0.3760$ $y=0.3816$ $u'=0.2203$ $v'=0.5031$
 CCT=4156K (Duv=0.0036) Dominant WL:Ld =576.5nm Purity=27.4%
 Ratio:R=18.6% G=77.3% B=4.2%; Peak WL:Lp=452.2nm FWHM=21.8nm
 Render Index:Ra=89.6 CRI=84.9 TM30:Rf=88 Rg=96
 R1 =89 R2 =94 R3 =97 R4 =89 R5 =88 R6 =91 R7 =92
 R8 =78 R9 =44 R10=84 R11=89 R12=65 R13=90 R14=98 R15=84

Photo Parameters:

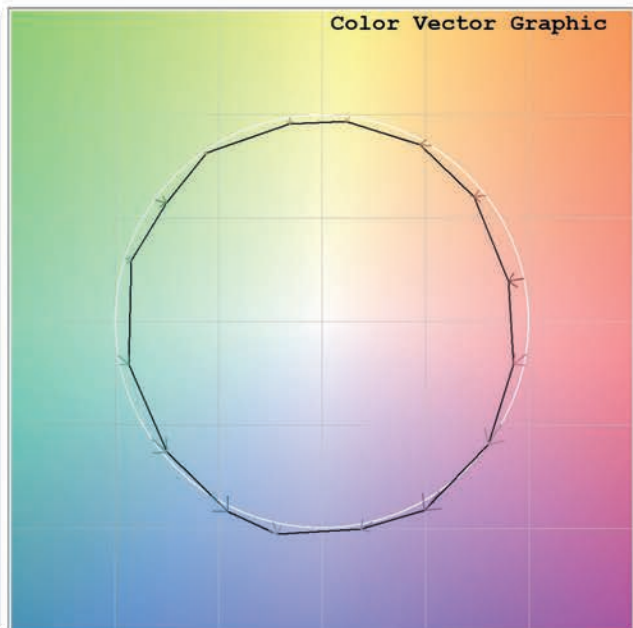
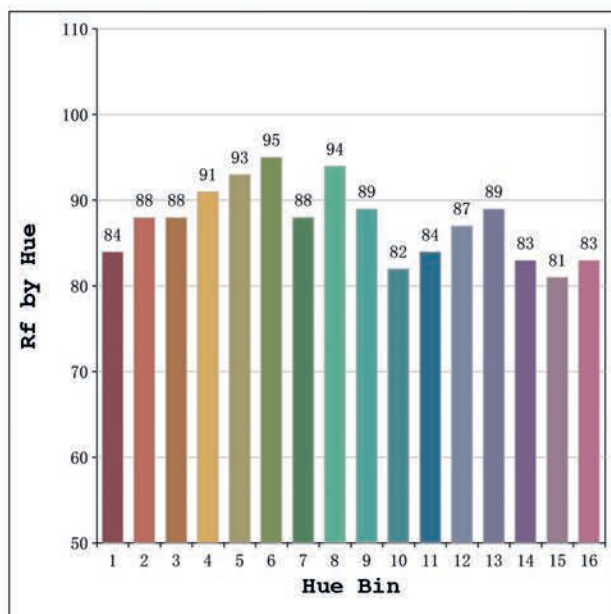
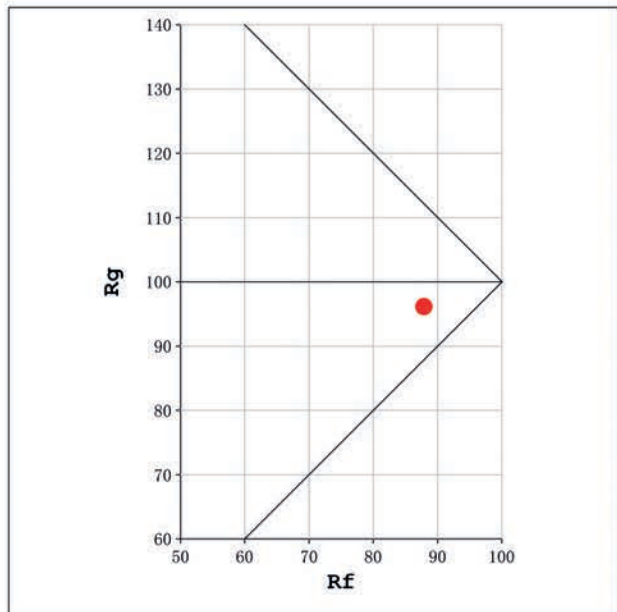
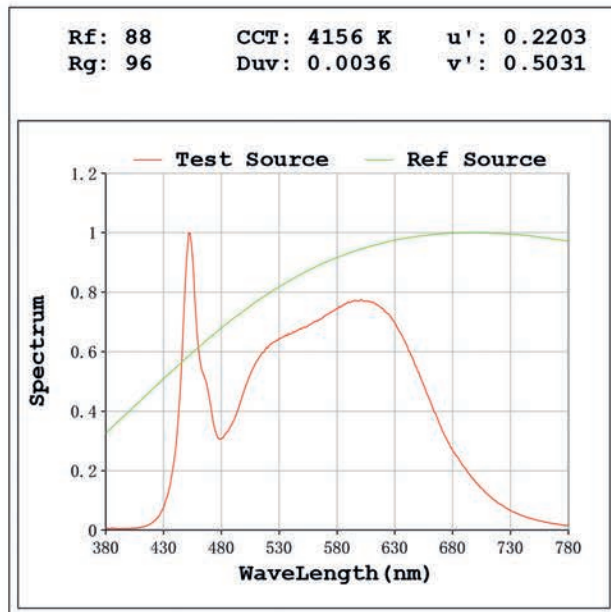
Flux = 956.1 lm Eff. : 106.67 lm/W Fe = 3.071 W

Electrical parameters:

V = 23.998 V I = 0.3735 A P = 8.963 W PF = 1.000

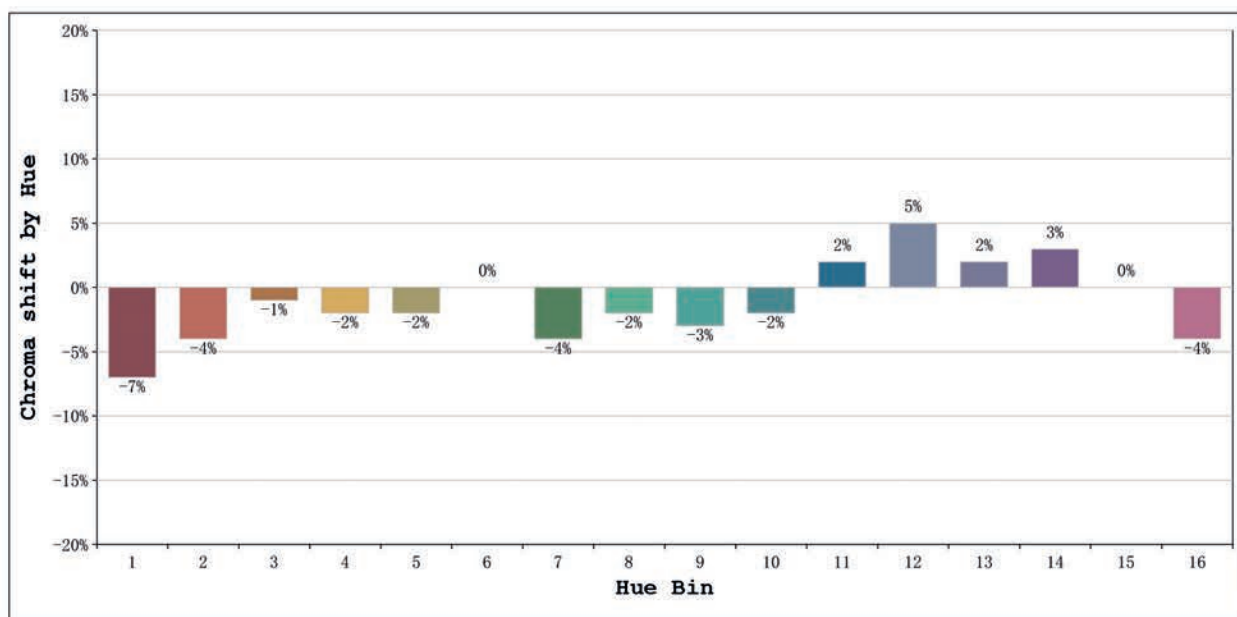
Status: Integral T = 1554 ms Ip = 47975 (73%)

Model:Ecoled Neón 360 mini 4000K	Number: 10.297
Tester:Sergio Carneros	Date:2025-06-16 13:08:55
Temperature:20Deg	Humidity:50%
Manufacturer:Luz Negra	Remarks:100cm de tira flexible



Model:Ecoled Neón 360 mini 4000K
 Tester:Sergio Carneros
 Temperature:20Deg
 Manufacturer:Luz Negra

Number: 10.297
 Date:2025-06-16 13:08:55
 Humidity:50%
 Remarks:100cm de tira flexible



			Graphic shift(%)	
Hue Bin	Hue Angle	Rf	Chroma	Hue
1	0.0° - 22.5°	84	-7	0
2	22.5° - 45.0°	88	-4	3
3	45.0° - 67.5°	88	-1	5
4	67.5° - 90.0°	91	-2	1
5	90.0° - 112.5°	93	-2	1
6	112.5° - 135.0°	95	0	0
7	135.0° - 157.5°	88	-4	-1
8	157.5° - 180.0°	94	-2	1
9	180.0° - 202.5°	89	-3	5
10	202.5° - 225.0°	82	-2	9
11	225.0° - 247.5°	84	2	11
12	247.5° - 270.0°	87	5	3
13	270.0° - 292.5°	89	2	-5
14	292.5° - 315.0°	83	3	-10
15	315.0° - 337.5°	81	0	-10
16	337.5° - 360.0°	83	-4	-5

Model:Ecoled Neón 360 mini 4000K Number: 10.297
 Tester:Sergio Carneros Date:2025-06-16 13:08:55
 Temperature:20Deg Humidity:50%
 Manufacturer:Luz Negra Remarks:100cm de tira flexible