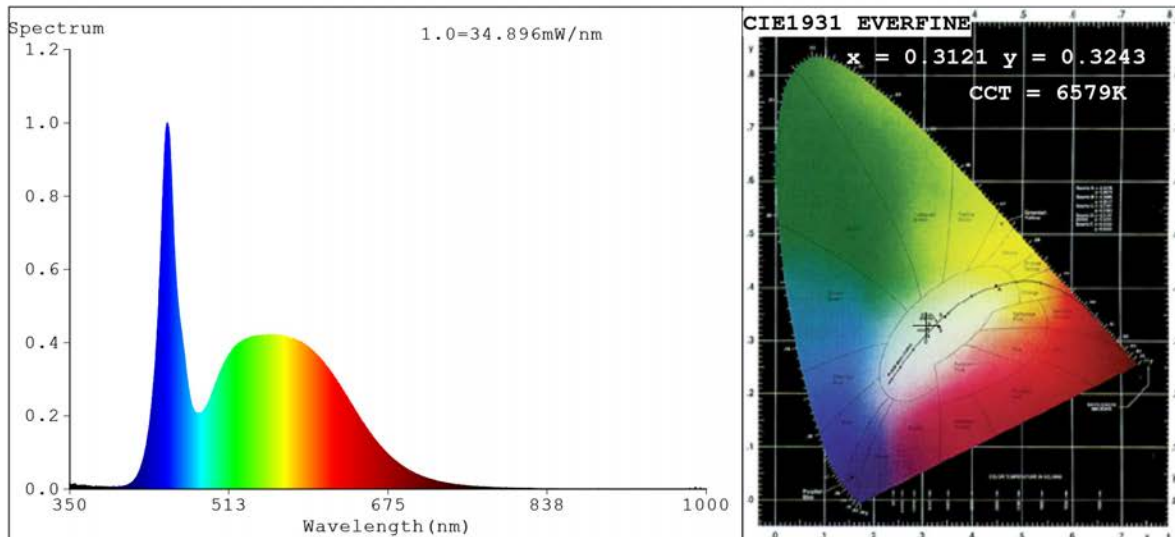


Spectrum Test Report



Color Parameters:

Chromaticity Coordinate: $x=0.3121$ $y=0.3243$ $u'=0.1992$ $v'=0.4657$
 CCT=6579K (Duv=0.0011) Dominant WL:Ld =486.1nm Purity=7.9%
 Ratio:R=13.8% G=80.7% B=5.5%;;Peak WL:Lp=449.5nm FWHM=20.2nm
 Render Index:Ra=84.5 CRI=77.9 TM30:Rf=82 Rg=96
 R1 =84 R2 =88 R3 =89 R4 =86 R5 =84 R6 =82 R7 =89
 R8 =75 R9 =21 R10=69 R11=85 R12=60 R13=85 R14=94 R15=81

Photo Parameters:

Flux = 962.0 lm Eff. : 97.78 lm/W Fe = 3.187 W

Electrical parameters:

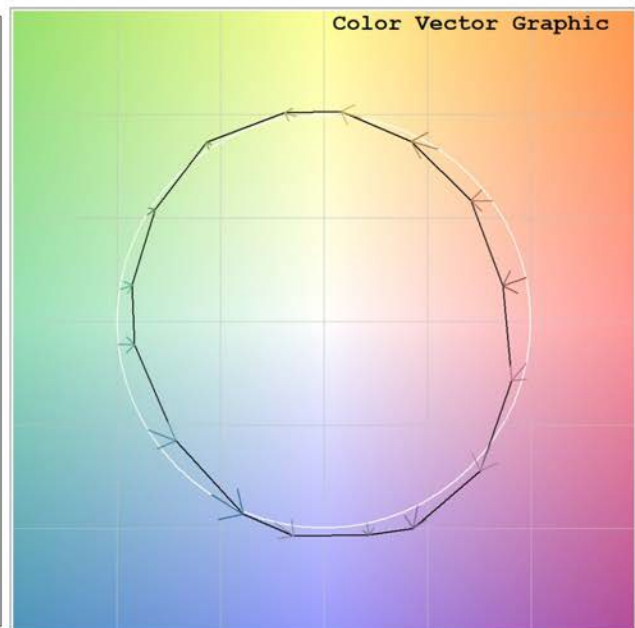
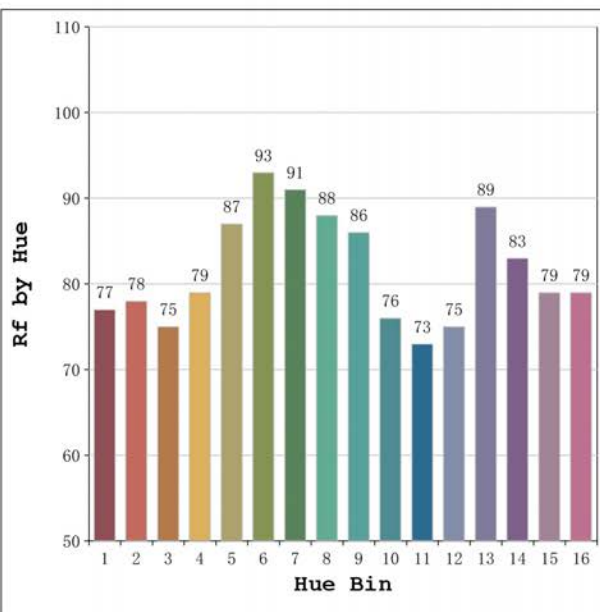
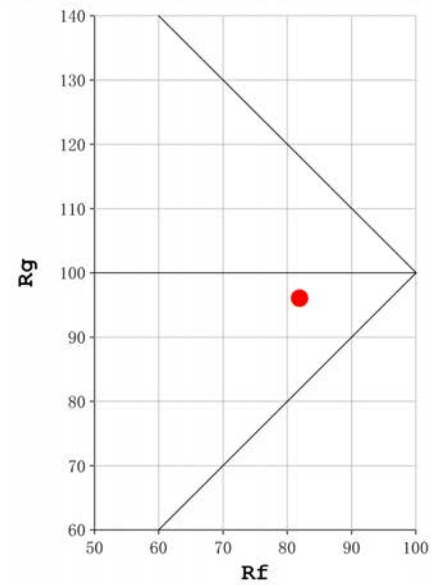
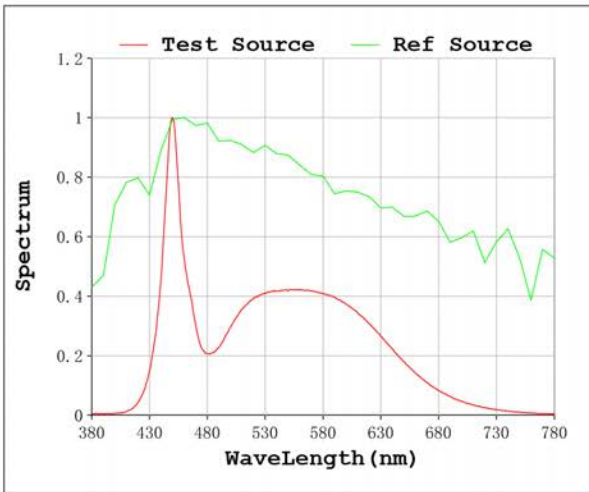
V = 11.998 V I = 0.8200 A P = 9.838 W PF = 1.000

Status: Integral T = 1056 ms Ip = 46291 (71%)

Model:Ecoled Getafe 6500K
 Tester:Sergio Carneros
 Temperature:27Deg
 Manufacturer:Luz Negra S.L

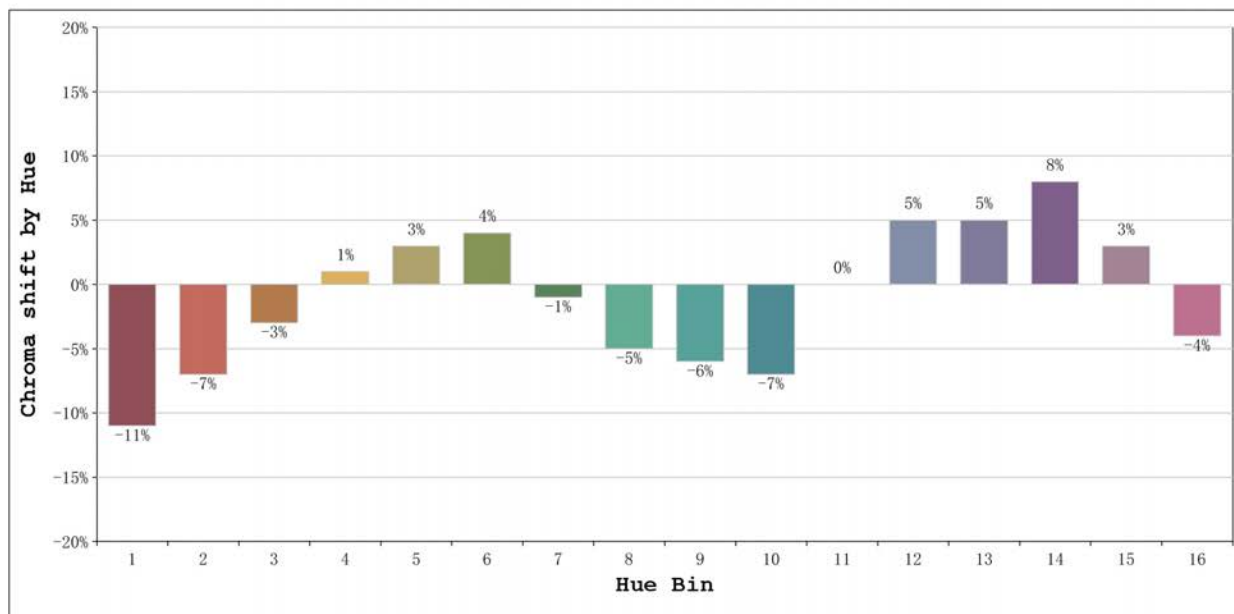
Number: 32.014
 Date:2024-11-14 15:11:05
 Humidity:40%
 Remarks:tira flexible de 100cm

Rf: 82 **CCT: 6579 K** **u': 0.1992**
Rg: 96 **Duv: 0.0011** **v': 0.4657**



Model:Ecoled Getafe 6500K
 Tester:Sergio Carneros
 Temperature:27Deg
 Manufacturer:Luz Negra S.L

Number: 32.014
 Date:2024-11-14 15:11:05
 Humidity:40%
 Remarks:tira flexible de 100cm



			Graphic shift(%)	
Hue Bin	Hue Angle	Rf	Chroma	Hue
1	0.0° - 22.5°	77	-11	-1
2	22.5° - 45.0°	78	-7	6
3	45.0° - 67.5°	75	-3	13
4	67.5° - 90.0°	79	1	10
5	90.0° - 112.5°	87	3	5
6	112.5° - 135.0°	93	4	0
7	135.0° - 157.5°	91	-1	-4
8	157.5° - 180.0°	88	-5	-2
9	180.0° - 202.5°	86	-6	2
10	202.5° - 225.0°	76	-7	12
11	225.0° - 247.5°	73	0	18
12	247.5° - 270.0°	75	5	11
13	270.0° - 292.5°	89	5	0
14	292.5° - 315.0°	83	8	-7
15	315.0° - 337.5°	79	3	-12
16	337.5° - 360.0°	79	-4	-8

Model:Ecoled Getafe 6500K
Tester:Sergio Carneros
Temperature:27Deg
Manufacturer:Luz Negra S.L

Number: 32.014
Date:2024-11-14 15:11:05
Humidity:40%
Remarks:tira flexible de 100cm