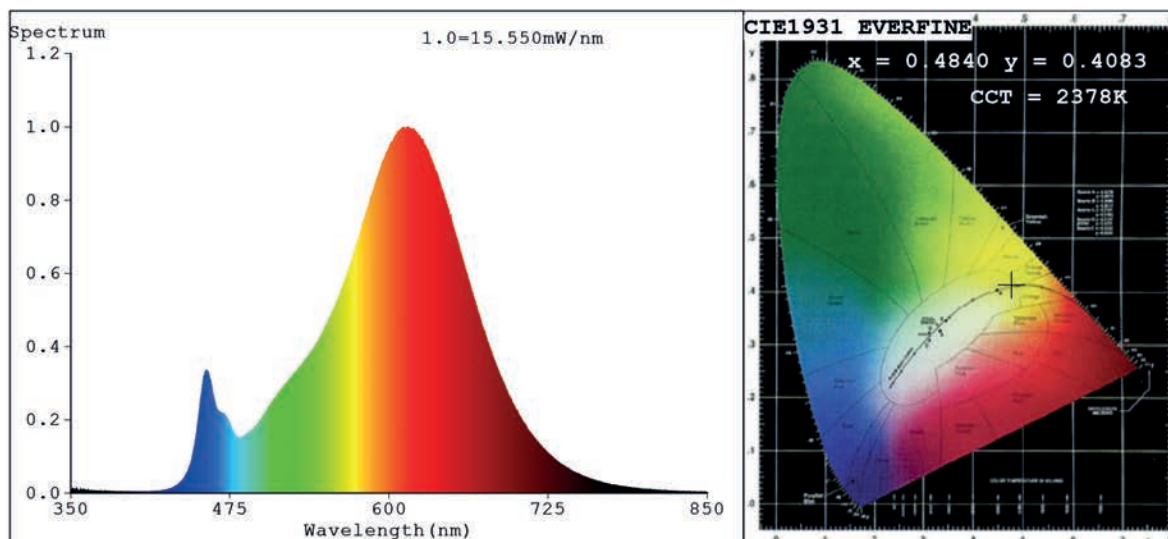


## Spectrum Test Report



### Color Parameters:

Chromaticity Coordinate:  $x=0.4840$   $y=0.4083$   $u'=0.2793$   $v'=0.5301$   
 CCT=2378K (Duv=-0.0021) Dominant WL:Ld =586.7nm Purity=67.8%  
 Ratio:R=28.7% G=69.2% B=2.1%; Peak WL:Lp=615.1nm FWHM=113.1nm  
 Render Index:Ra=84.1 CRI=80.7 TM30:Rf=82 Rg=96  
 R1 =84 R2 =95 R3 =92 R4 =80 R5 =84 R6 =96 R7 =80  
 R8 =60 R9 =21 R10=90 R11=80 R12=82 R13=87 R14=97 R15=77

### Photo Parameters:

Flux = 643.0 lm Eff. : 118.08 lm/W Fe = 2.165 W

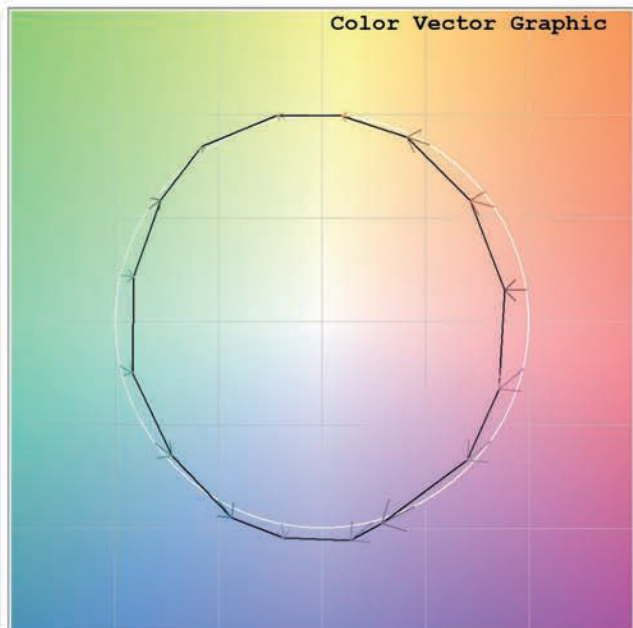
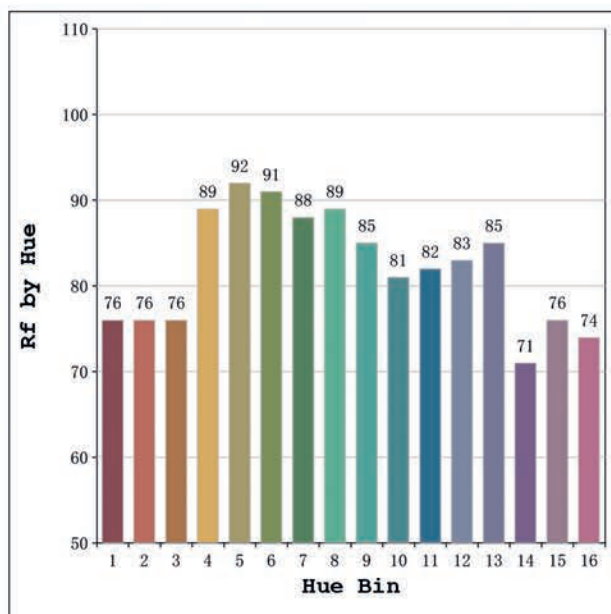
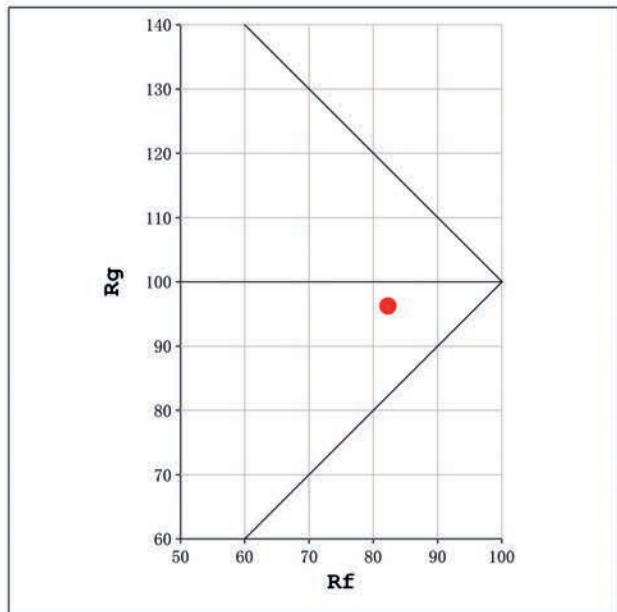
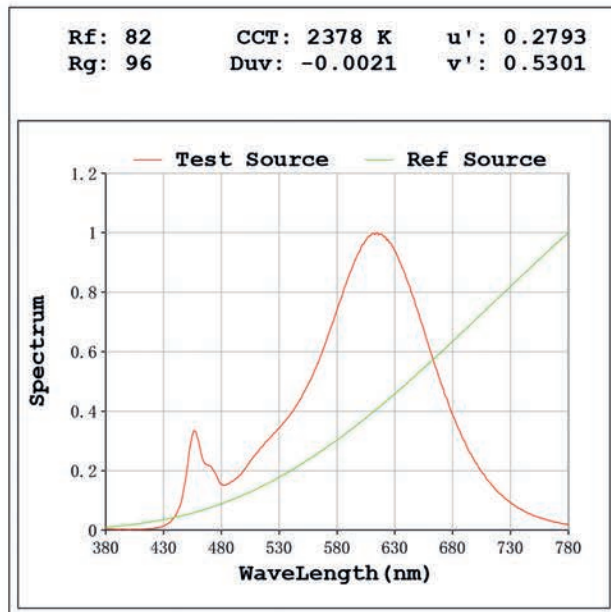
### Electrical parameters:

V = 23.998 V I = 0.2269 A P = 5.445 W PF = 1.000

Status: Integral T = 1686 ms Ip = 50263 (77%)

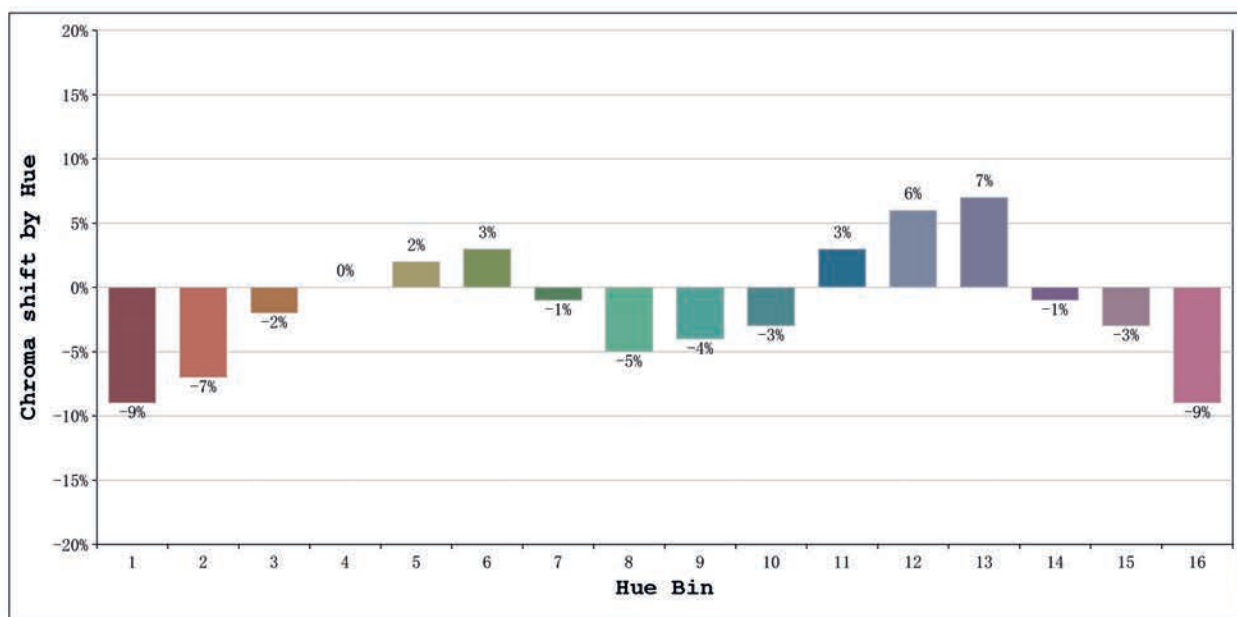
Model:Ecoled Elite 5 2400k  
 Tester:MªAngeles  
 Temperature:25Deg  
 Manufacturer:Luz Negra

Number: 31.219  
 Date:2025-06-02 10:56:07  
 Humidity:40%  
 Remarks:100cm tira flexible



Model:Ecoled Elite 5 2400k  
 Tester:MªAngeles  
 Temperature:25Deg  
 Manufacturer:Luz Negra

Number: 31.219  
 Date:2025-06-02 10:56:07  
 Humidity:40%  
 Remarks:100cm tira flexible



			Graphic shift(%)	
Hue Bin	Hue Angle	Rf	Chroma	Hue
1	0.0° - 22.5°	76	-9	2
2	22.5° - 45.0°	76	-7	9
3	45.0° - 67.5°	76	-2	11
4	67.5° - 90.0°	89	0	5
5	90.0° - 112.5°	92	2	3
6	112.5° - 135.0°	91	3	0
7	135.0° - 157.5°	88	-1	-6
8	157.5° - 180.0°	89	-5	0
9	180.0° - 202.5°	85	-4	4
10	202.5° - 225.0°	81	-3	10
11	225.0° - 247.5°	82	3	10
12	247.5° - 270.0°	83	6	2
13	270.0° - 292.5°	85	7	-11
14	292.5° - 315.0°	71	-1	-17
15	315.0° - 337.5°	76	-3	-13
16	337.5° - 360.0°	74	-9	-11

Model:Ecoled Elite 5 2400k  
 Tester:MªAngeles  
 Temperature:25Deg  
 Manufacturer:Luz Negra

Number: 31.219  
 Date:2025-06-02 10:56:07  
 Humidity:40%  
 Remarks:100cm tira flexible