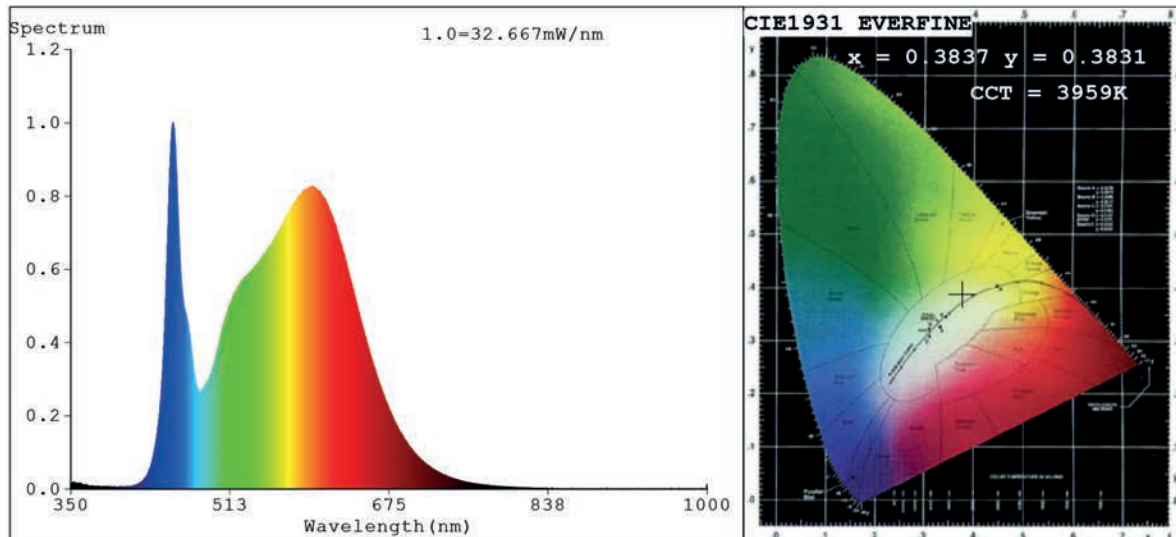


Spectrum Test Report



Color Parameters:

Chromaticity Coordinate: $x=0.3837$ $y=0.3831$ $u'=0.2247$ $v'=0.5048$
 CCT=3959K (Duv=0.0020) Dominant WL:Ld =578.2nm Purity=30.1%
 Ratio:R=18.5% G=77.6% B=3.8%; Peak WL:Lp=454.3nm FWHM=19.0nm
 Render Index:Ra=83.9 CRI=77.5 TM30:Rf=82 Rg=94
 R1 =83 R2 =91 R3 =96 R4 =81 R5 =82 R6 =88 R7 =86
 R8 =65 R9 =11 R10=79 R11=80 R12=59 R13=85 R14=99 R15=76

Photo Parameters:

Flux = 1546 lm Eff. : 160.73 lm/W Fe = 4.679 W

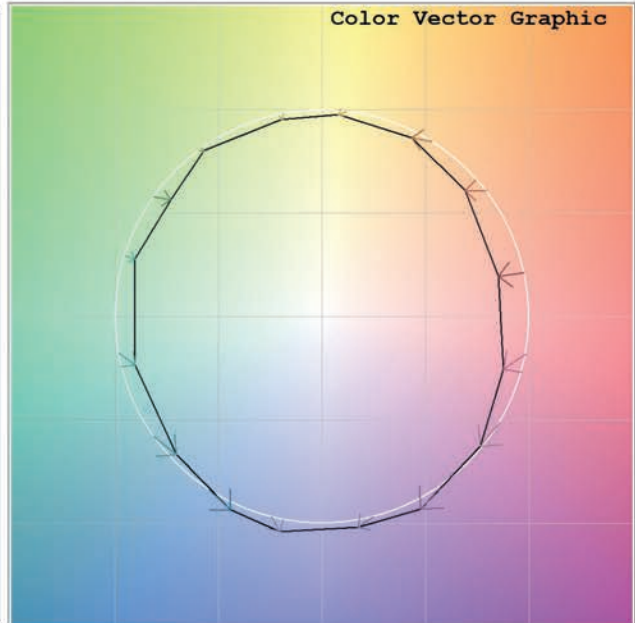
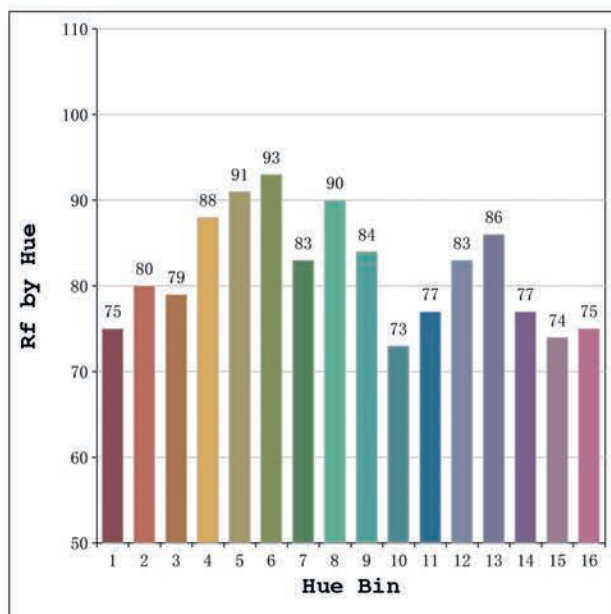
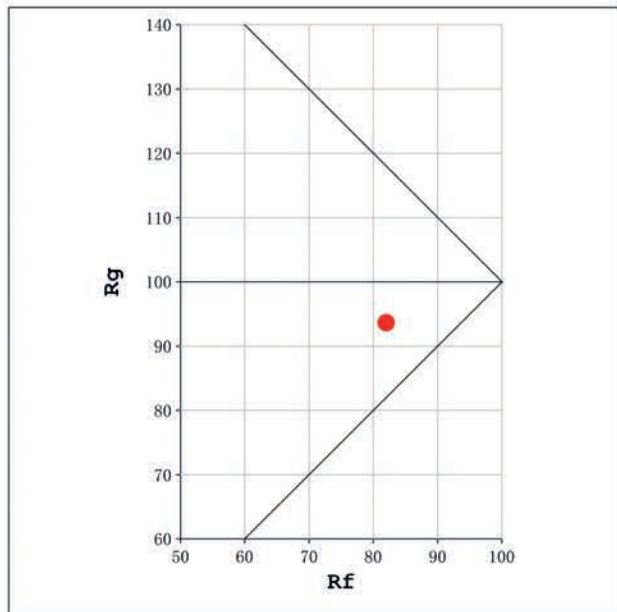
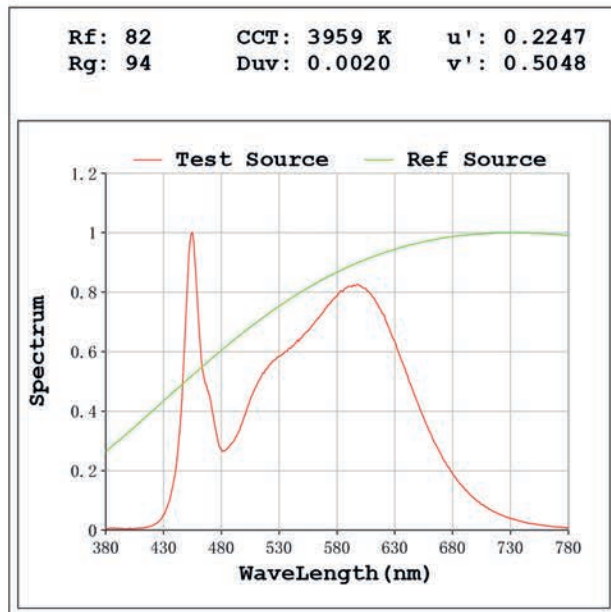
Electrical parameters:

V = 23.998 V I = 0.4009 A P = 9.621 W PF = 1.000

Status: Integral T = 773 ms Ip = 38482 (59%)

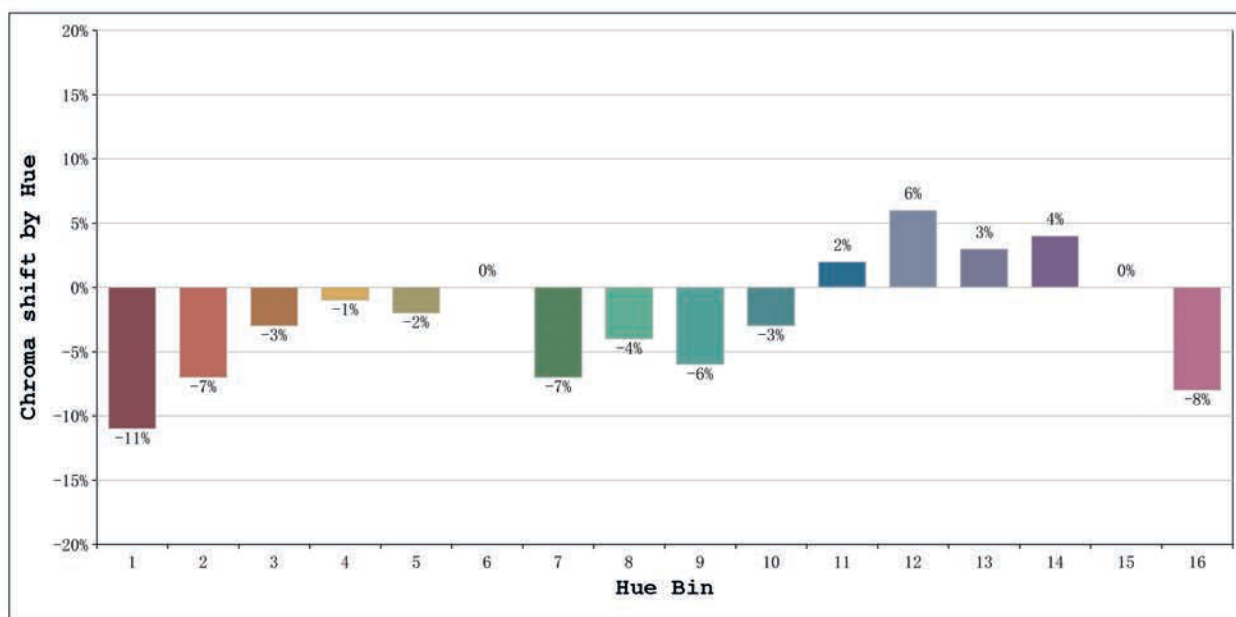
Model:Élite 10 4000k
 Tester:Sergio Carneros
 Temperature:21Deg
 Manufacturer:Luz Negra S.L

Number:31.204
 Date:2025-01-14 13:40:02
 Humidity:41%
 Remarks:100cm de tira flexible



Model:Élite 10 4000k
 Tester:Sergio Carneros
 Temperature:21Deg
 Manufacturer:Luz Negra S.L

Number:31.204
 Date:2025-01-14 13:40:02
 Humidity:41%
 Remarks:100cm de tira flexible



			Graphic shift(%)	
Hue Bin	Hue Angle	Rf	Chroma	Hue
1	0.0° - 22.5°	75	-11	1
2	22.5° - 45.0°	80	-7	6
3	45.0° - 67.5°	79	-3	9
4	67.5° - 90.0°	88	-1	4
5	90.0° - 112.5°	91	-2	2
6	112.5° - 135.0°	93	0	-1
7	135.0° - 157.5°	83	-7	-2
8	157.5° - 180.0°	90	-4	1
9	180.0° - 202.5°	84	-6	7
10	202.5° - 225.0°	73	-3	14
11	225.0° - 247.5°	77	2	14
12	247.5° - 270.0°	83	6	6
13	270.0° - 292.5°	86	3	-7
14	292.5° - 315.0°	77	4	-14
15	315.0° - 337.5°	74	0	-14
16	337.5° - 360.0°	75	-8	-8

Model:Élite 10 4000k
Tester:Sergio Carneros
Temperature:21Deg
Manufacturer:Luz Negra S.L

Number:31.204
Date:2025-01-14 13:40:02
Humidity:41%
Remarks:100cm de tira flexible