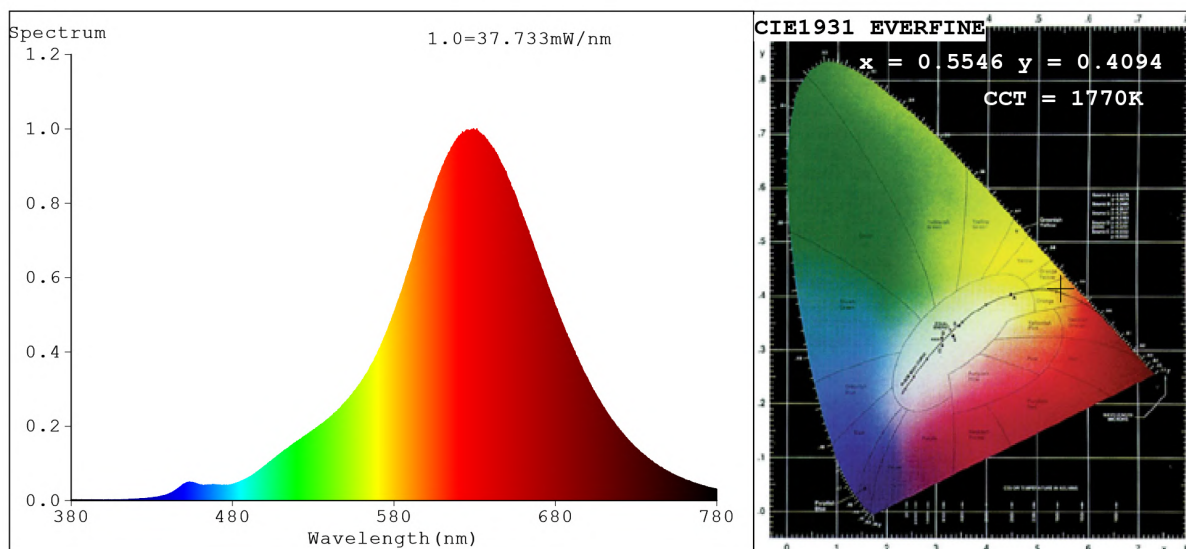


Spectrum Test Report



Color Parameters:

Chromaticity Coordinate: $x=0.5546$ $y=0.4094$ $u'=0.3260$ $v'=0.5416$

CCT=1770K (Duv=0.0008) Dominant WL:Ld =591.0nm Purity=89.4%

Ratio:R=38.5% G=60.6% B=0.9%; Peak WL:Lp=631.3nm FWHM=102.8nm

Render Index:Ra=86.1 CRI=84.2 TM30:Rf=86 Rg=92

R1 =86 R2 =95 R3 =94 R4 =85 R5 =86 R6 =98 R7 =82

R8 =63 R9 =30 R10=91 R11=88 R12=94 R13=88 R14=98 R15=77

Photo Parameters:

Flux = 1136 lm Eff. : 79.40 lm/W Fe = 4.606 W Scotopic:837.62 S/P:0.7371

Electrical parameters:

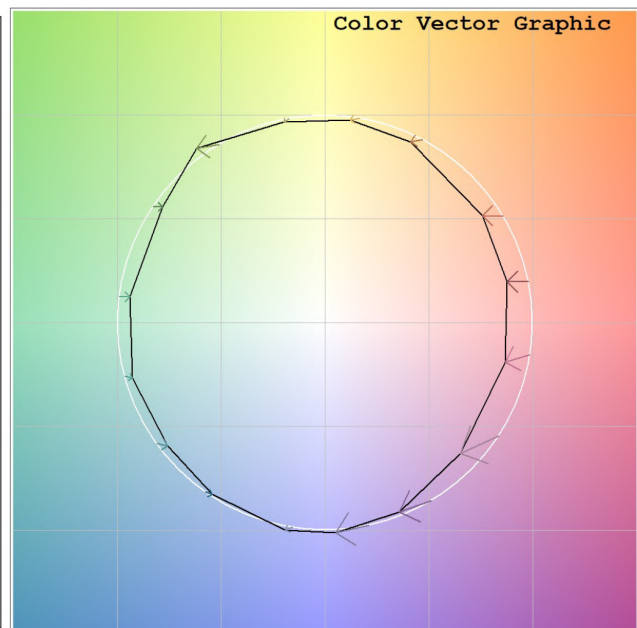
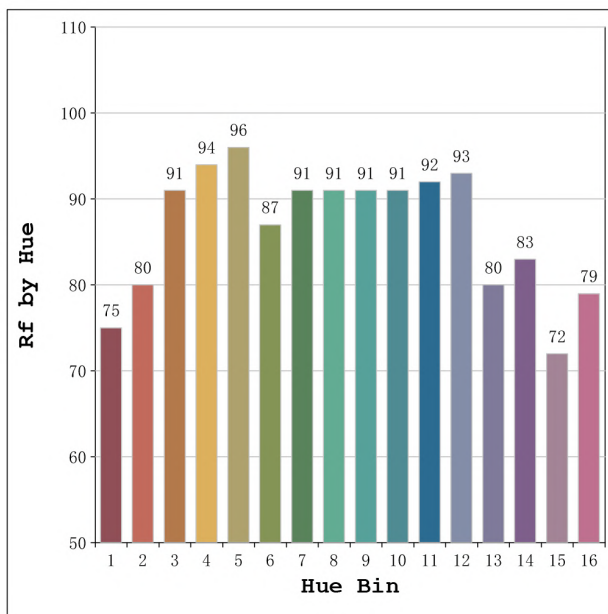
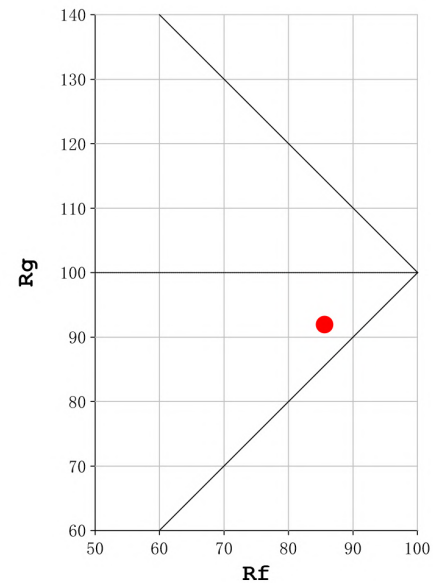
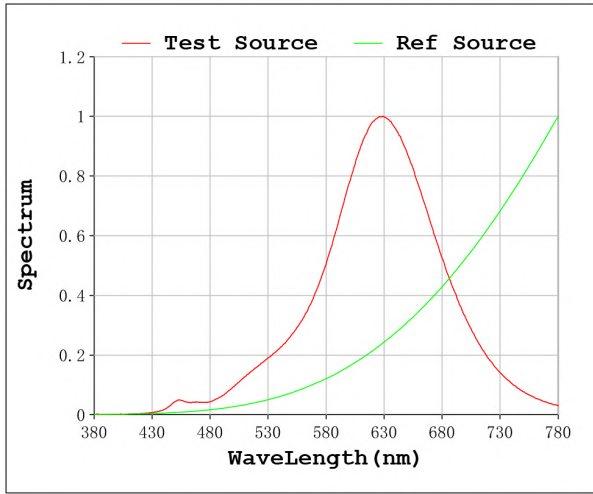
V = 23.998 V I = 0.5964 A P = 14.31 W PF = 1.000

Status: Integral T = 784 ms Ip = 53555 (82%)

Model:Ecoled Elite 15 1800K
 Tester:Sergio Carneros
 Temperature:27Deg
 Manufacturer:Luz Negra S.L

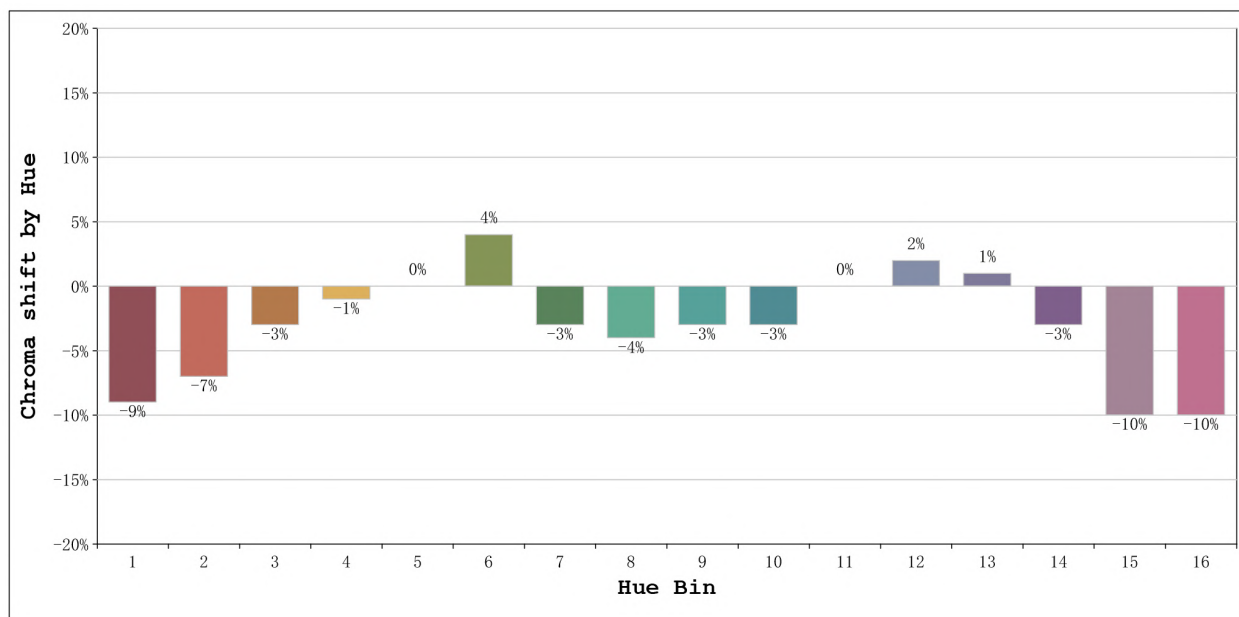
Number: 31.151
 Date:2024-02-16 12:51:36
 Humidity:40%
 Remarks:100cm de tira flexible

Rf: 86 **CCT: 1770 K** **u': 0.3260**
Rg: 92 **Duv: 0.0008** **v': 0.5416**



Model:Ecoled Elite 15 1800K
 Tester:Sergio Carneros
 Temperature:27Deg
 Manufacturer:Luz Negra S.L

Number: 31.151
 Date:2024-02-16 12:51:36
 Humidity:40%
 Remarks:100cm de tira flexible



			Graphic shift(%)	
Hue Bin	Hue Angle	Rf	Chroma	Hue
1	0.0° - 22.5°	75	-9	2
2	22.5° - 45.0°	80	-7	6
3	45.0° - 67.5°	91	-3	4
4	67.5° - 90.0°	94	-1	4
5	90.0° - 112.5°	96	0	3
6	112.5° - 135.0°	87	4	10
7	135.0° - 157.5°	91	-3	-1
8	157.5° - 180.0°	91	-4	0
9	180.0° - 202.5°	91	-3	2
10	202.5° - 225.0°	91	-3	4
11	225.0° - 247.5°	92	0	4
12	247.5° - 270.0°	93	2	-2
13	270.0° - 292.5°	80	1	-15
14	292.5° - 315.0°	83	-3	-15
15	315.0° - 337.5°	72	-10	-16
16	337.5° - 360.0°	79	-10	-5

Model:Ecoled Elite 15 1800K
 Tester:Sergio Carneros
 Temperature:27Deg
 Manufacturer:Luz Negra S.L

Number: 31.151
 Date:2024-02-16 12:51:36
 Humidity:40%
 Remarks:100cm de tira flexible