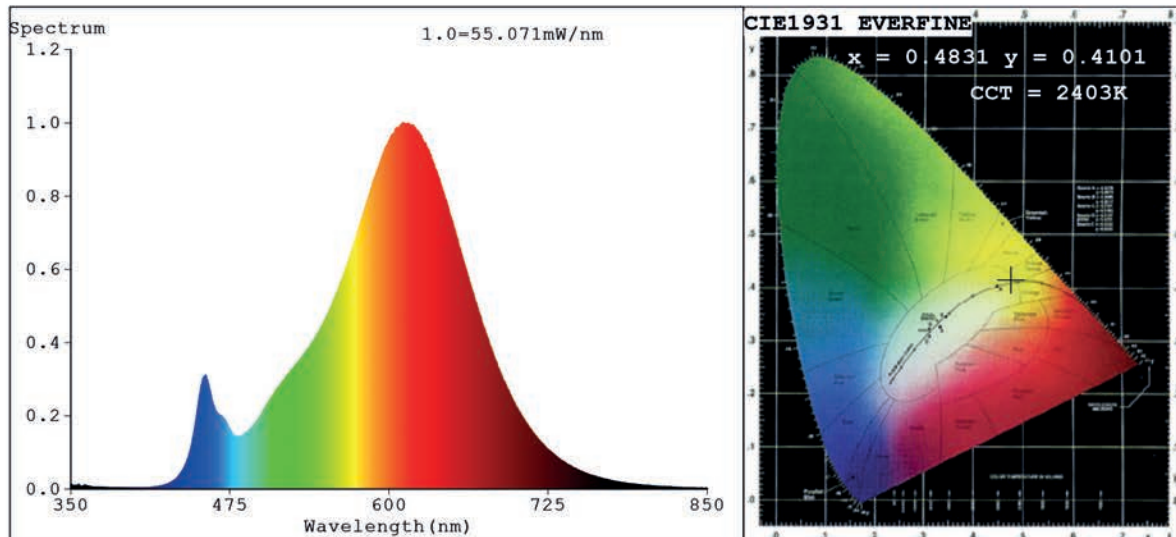


Spectrum Test Report



Color Parameters:

Chromaticity Coordinate: $x=0.4831$ $y=0.4101$ $u'=0.2778$ $v'=0.5307$
 CCT=2403K (Duv=-0.0014) Dominant WL:Ld =586.3nm Purity=68.1%
 Ratio:R=28.2% G=69.8% B=2.0%;;Peak WL:Lp=610.8nm FWHM=114.9nm
 Render Index:Ra=83.5 CRI=79.7 TM30:Rf=82 Rg=96
 R1 =83 R2 =94 R3 =94 R4 =80 R5 =83 R6 =94 R7 =81
 R8 =60 R9 =19 R10=87 R11=79 R12=81 R13=85 R14=97 R15=76

Photo Parameters:

Flux = 2313 lm Eff. : 105.11 lm/W Fe = 7.717 W

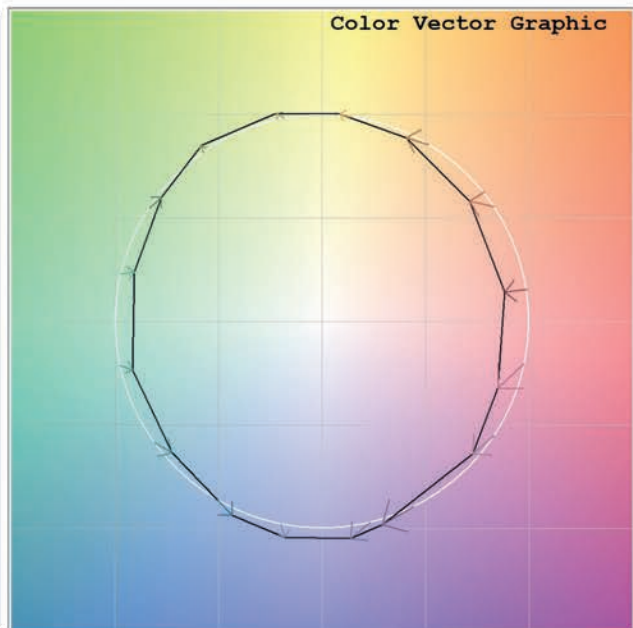
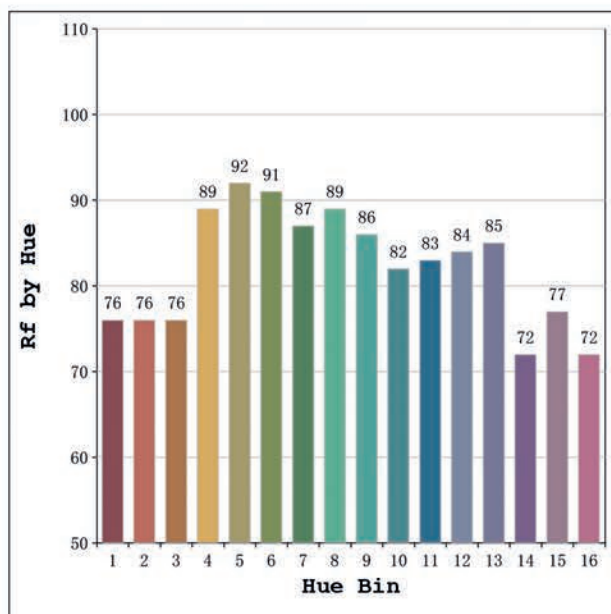
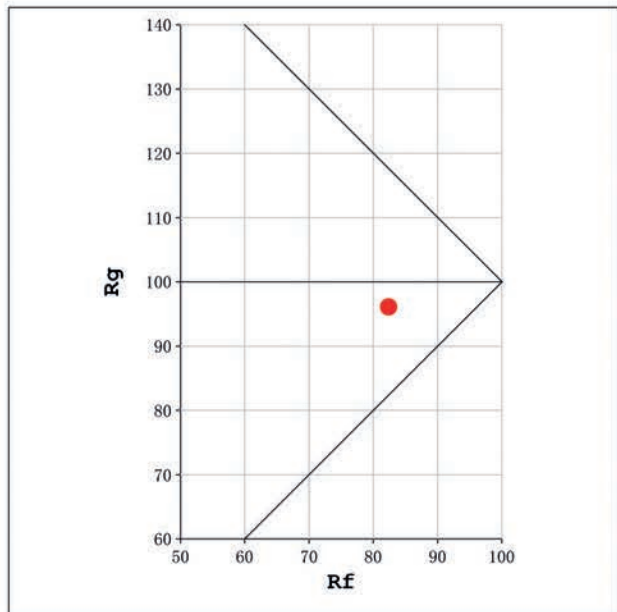
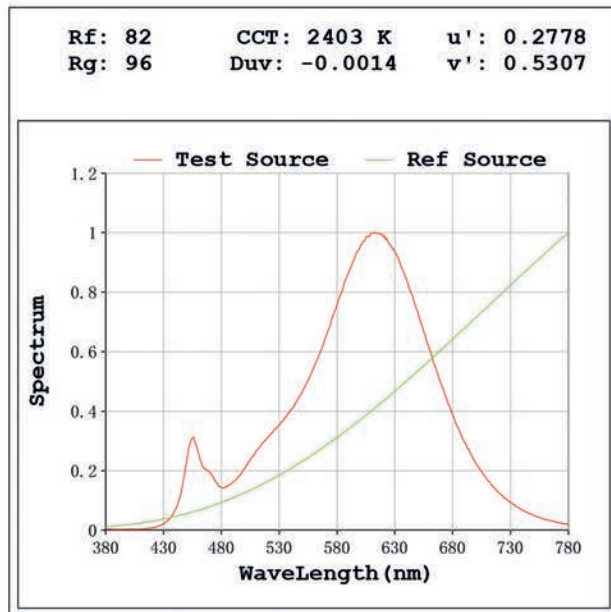
Electrical parameters:

V = 23.998 V I = 0.9168 A P = 22.00 W PF = 1.000

Status: Integral T = 441 ms Ip = 46797 (71%)

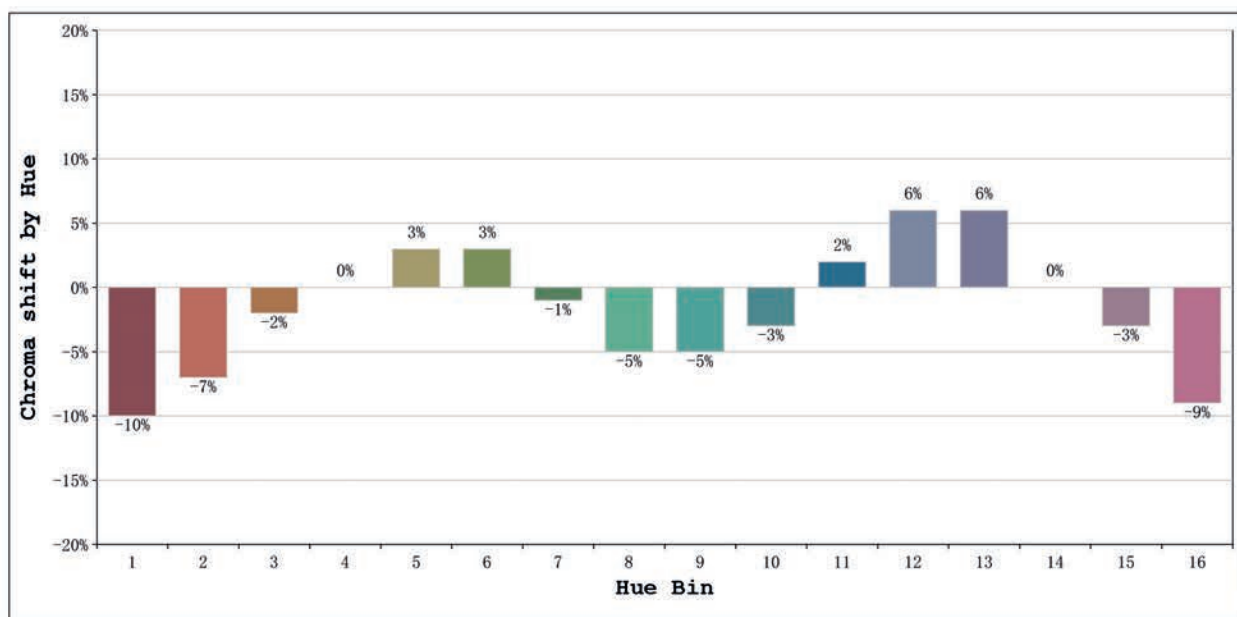
Model:Ecoled Elite 20 2400K
 Tester:MªAngeles
 Temperature:25Deg
 Manufacturer:Luz Negra

Number: 31.217
 Date:2025-06-02 09:15:23
 Humidity:40%
 Remarks:100cm tira flexible



Model:Ecoled Elite 20 2400K
 Tester:MªAngeles
 Temperature:25Deg
 Manufacturer:Luz Negra

Number: 31.217
 Date:2025-06-02 09:15:23
 Humidity:40%
 Remarks:100cm tira flexible



			Graphic shift(%)	
Hue Bin	Hue Angle	Rf	Chroma	Hue
1	0.0° - 22.5°	76	-10	1
2	22.5° - 45.0°	76	-7	9
3	45.0° - 67.5°	76	-2	11
4	67.5° - 90.0°	89	0	6
5	90.0° - 112.5°	92	3	3
6	112.5° - 135.0°	91	3	0
7	135.0° - 157.5°	87	-1	-6
8	157.5° - 180.0°	89	-5	-1
9	180.0° - 202.5°	86	-5	3
10	202.5° - 225.0°	82	-3	9
11	225.0° - 247.5°	83	2	10
12	247.5° - 270.0°	84	6	3
13	270.0° - 292.5°	85	6	-10
14	292.5° - 315.0°	72	0	-16
15	315.0° - 337.5°	77	-3	-12
16	337.5° - 360.0°	72	-9	-13

Model:Ecoled Elite 20 2400K
 Tester:MªAngeles
 Temperature:25Deg
 Manufacturer:Luz Negra

Number: 31.217
 Date:2025-06-02 09:15:23
 Humidity:40%
 Remarks:100cm tira flexible