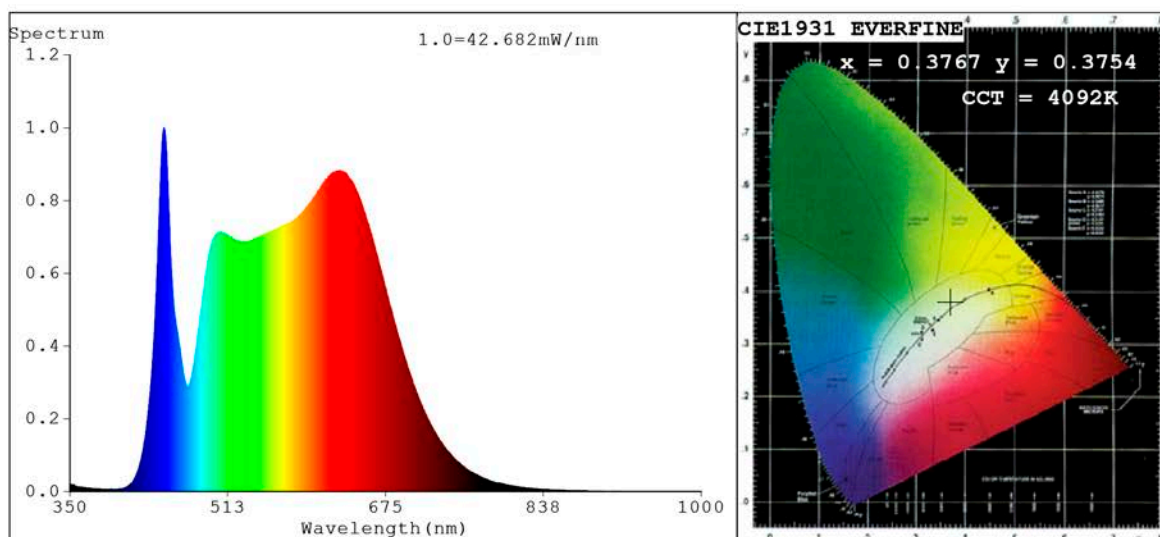


Spectrum Test Report



Color Parameters:

Chromaticity Coordinate: $x=0.3767$ $y=0.3754$ $u'=0.2232$ $v'=0.5004$
 CCT=4092K (Duv=0.0004) Dominant WL:Ld =578.5nm Purity=25.7%
 Ratio:R=20.3% G=74.9% B=4.8%;;Peak WL:Lp=446.8nm FWHM=19.3nm
 Render Index:Ra=98.3 CRI=97.4 TM30:Rf=96 Rg=102
 R1 =99 R2 =100 R3 =98 R4 =96 R5 =98 R6 =98 R7 =99
 R8 =98 R9 =96 R10=99 R11=93 R12=91 R13=99 R14=99 R15=99

Photo Parameters:

Flux = 2258 lm Eff. : 113.45 lm/W Fe = 8.230 W Scotopic:4286.4 S/P:1.8985

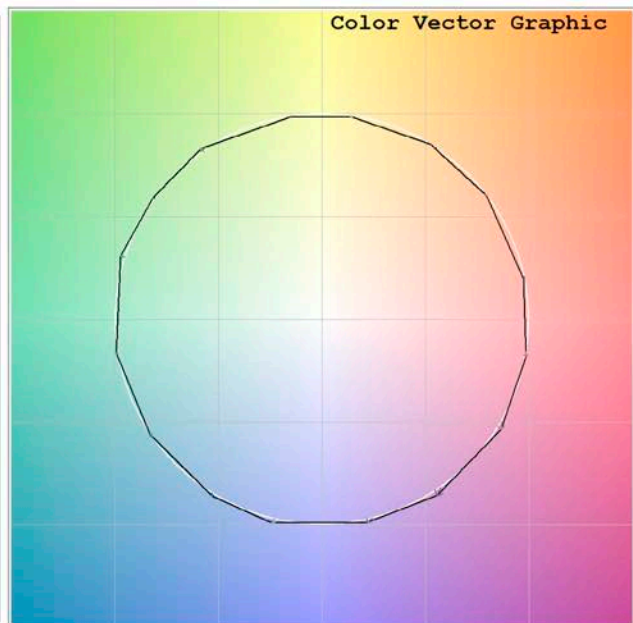
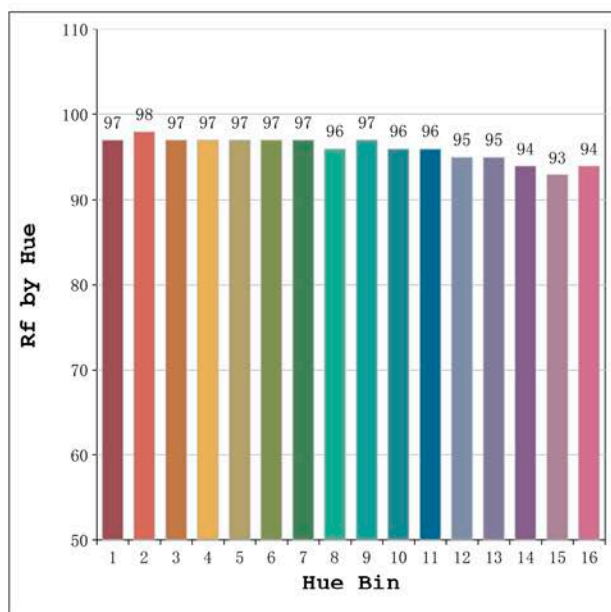
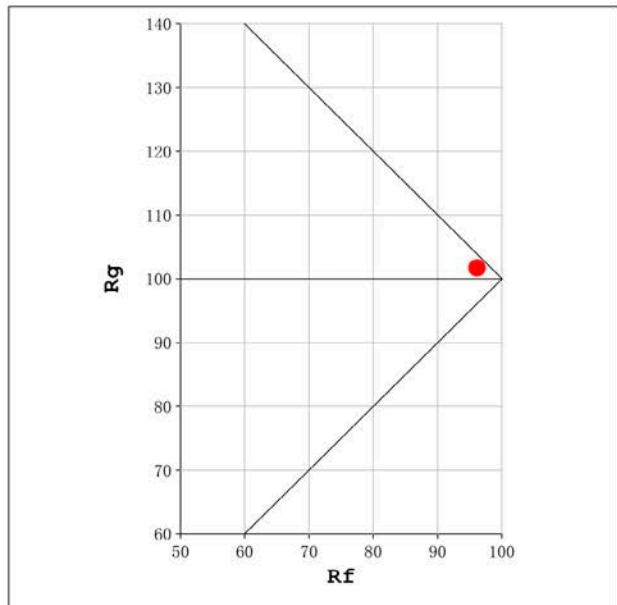
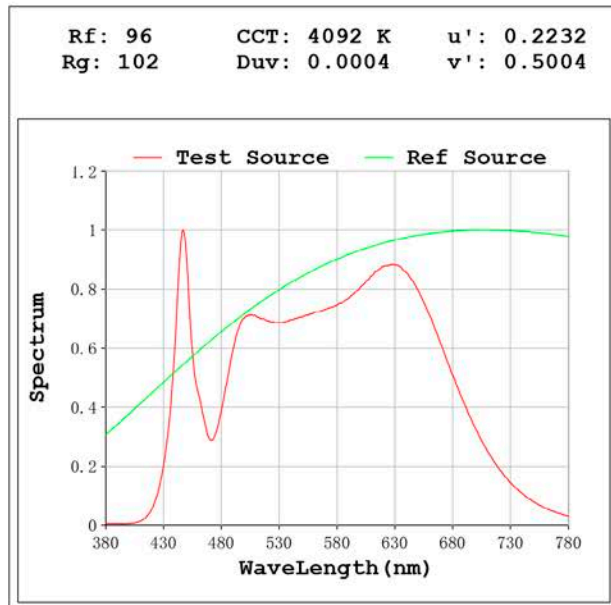
Electrical parameters:

V = 23.998 V I = 0.8293 A P = 19.90 W PF = 1.000

Status: Integral T = 810 ms Ip = 52665 (80%)

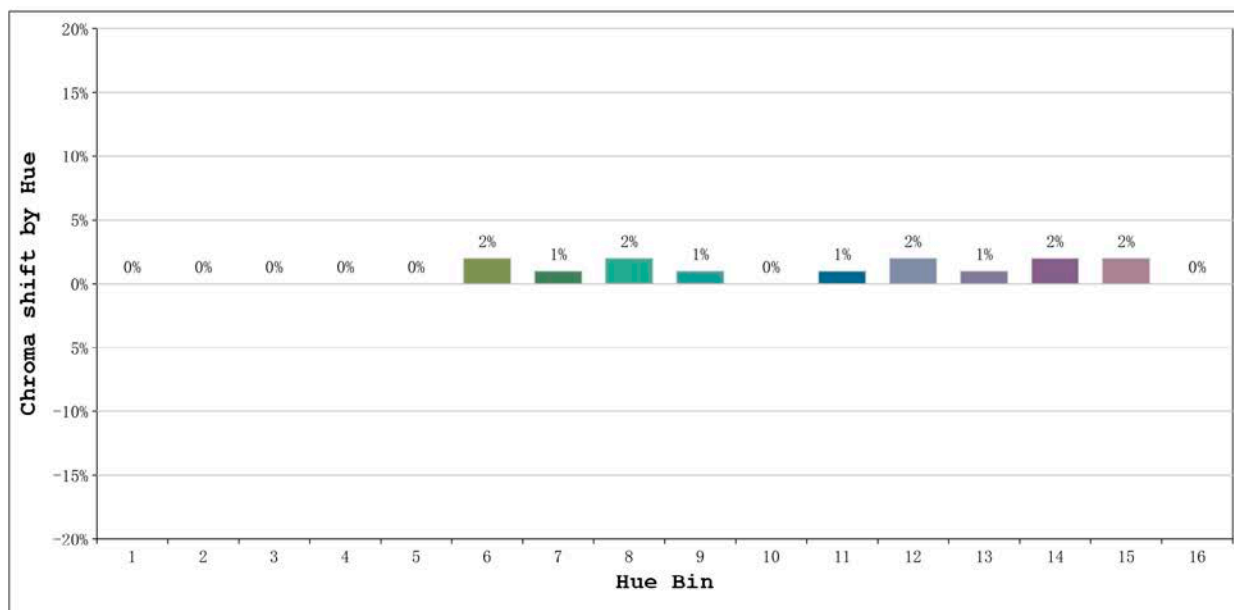
Model:Ecoled Sevilla 4000K
 Tester:Sergio carneros
 Temperature:25Deg
 Manufacturer:Luz Negra

Number: 33.003
 Date:26-5-2021
 Humidity:57%
 Remarks:100cm de tira flexible



Model:Ecoled Sevilla 4000K
 Tester:Sergio carneros
 Temperature:25Deg
 Manufacturer:Luz Negra

Number: 33.003
 Date:26-5-2021
 Humidity:57%
 Remarks:100cm de tira flexible



Hue Bin	Hue Angle	Rf	Graphic shift(%)	
			Chroma	Hue
1	0.0° - 22.5°	97	0	0
2	22.5° - 45.0°	98	0	0
3	45.0° - 67.5°	97	0	0
4	67.5° - 90.0°	97	0	0
5	90.0° - 112.5°	97	0	0
6	112.5° - 135.0°	97	2	1
7	135.0° - 157.5°	97	1	0
8	157.5° - 180.0°	96	2	0
9	180.0° - 202.5°	97	1	0
10	202.5° - 225.0°	96	0	-1
11	225.0° - 247.5°	96	1	1
12	247.5° - 270.0°	95	2	0
13	270.0° - 292.5°	95	1	-2
14	292.5° - 315.0°	94	2	-3
15	315.0° - 337.5°	93	2	-3
16	337.5° - 360.0°	94	0	-2

Model:Ecoled Sevilla 4000K
Tester:Sergio carneros
Temperature:25Deg
Manufacturer:Luz Negra

Number: 33.003
Date:26-5-2021
Humidity:57%
Remarks:100cm de tira flexible