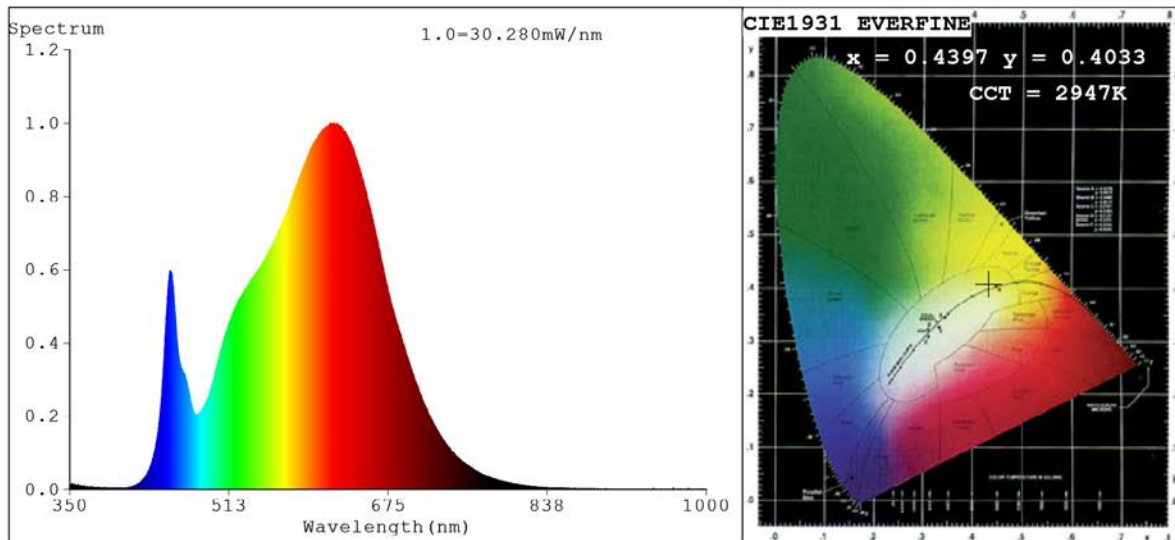


Spectrum Test Report



Color Parameters:

Chromaticity Coordinate: $x=0.4397$ $y=0.4033$ $u'=0.2527$ $v'=0.5215$
 CCT=2947K (Duv=-0.0007) Dominant WL: $\lambda_d = 583.3\text{nm}$ Purity=53.0%
 Ratio: R=24.4% G=73.0% B=2.7%; Peak WL: $\lambda_p = 619.8\text{nm}$ FWHM=159.4nm
 Render Index: Ra=91.2 CRI=87.9 TM30: Rf=89 Rg=100
 R1 =91 R2 =95 R3 =98 R4 =91 R5 =91 R6 =94 R7 =91
 R8 =79 R9 =53 R10=88 R11=91 R12=77 R13=92 R14=98 R15=87

Photo Parameters:

Flux = 1516 lm Eff. : 104.04 lm/W Φ_e = 5.238 W

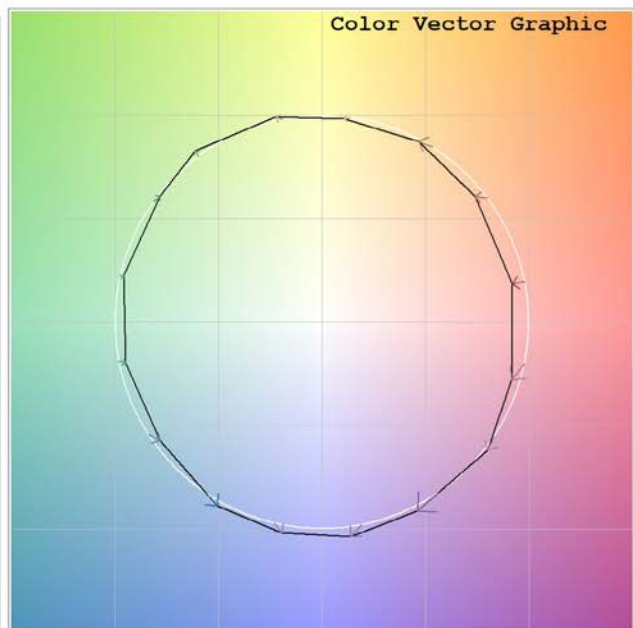
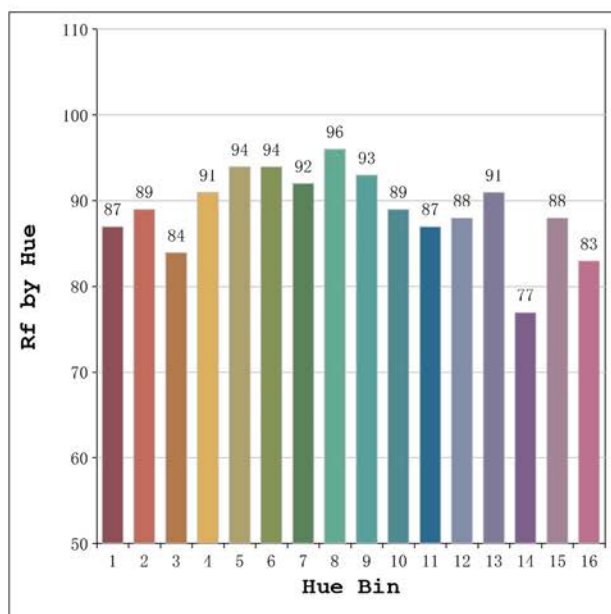
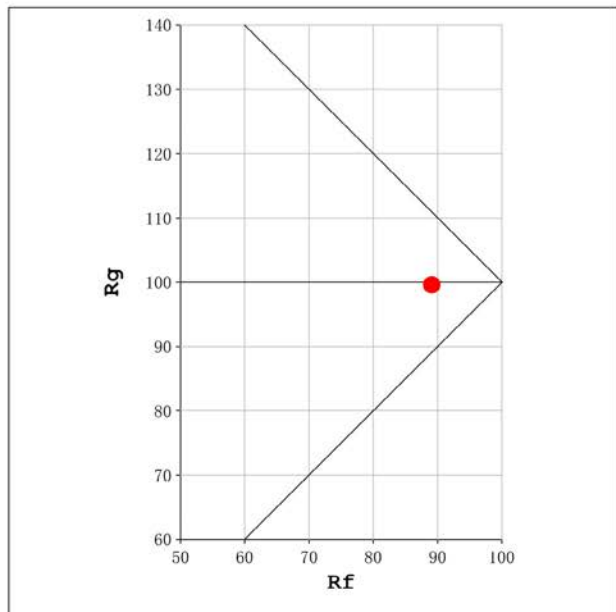
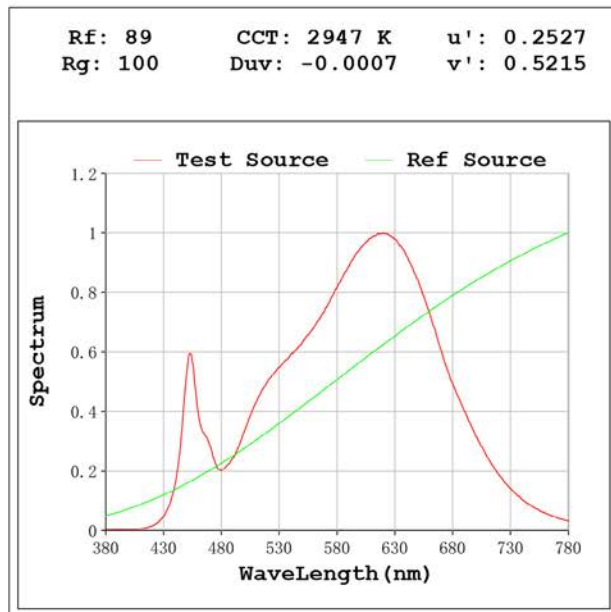
Electrical parameters:

V = 23.998 V I = 0.6071 A P = 14.57 W PF = 1.000

Status: Integral T = 1056 ms I_p = 52875 (81%)

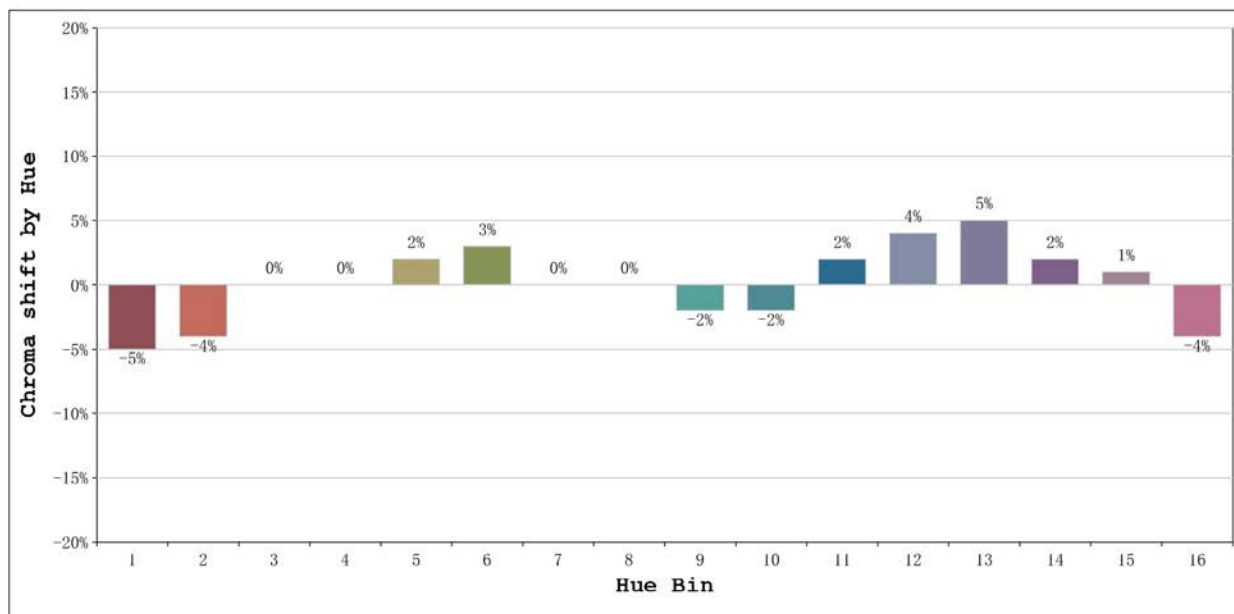
Model: Ecoled COB IP67 3000k
 Tester: Sergio Carneros
 Temperature: 27Deg
 Manufacturer: Luz Negra S.L

Number: 31.104
 Date: 2024-08-02
 Humidity: 40%
 Remarks: tira flexible de 100cm



Model:Ecoled COB IP67 3000k
 Tester:Sergio Carneros
 Temperature:27Deg
 Manufacturer:Luz Negra S.L

Number: 31.104
 Date:2024-08-02
 Humidity:40%
 Remarks:tira flexible de 100cm



			Graphic shift(%)	
Hue Bin	Hue Angle	Rf	Chroma	Hue
1	0.0° - 22.5°	87	-5	0
2	22.5° - 45.0°	89	-4	4
3	45.0° - 67.5°	84	0	7
4	67.5° - 90.0°	91	0	3
5	90.0° - 112.5°	94	2	3
6	112.5° - 135.0°	94	3	0
7	135.0° - 157.5°	92	0	-3
8	157.5° - 180.0°	96	0	-1
9	180.0° - 202.5°	93	-2	1
10	202.5° - 225.0°	89	-2	5
11	225.0° - 247.5°	87	2	8
12	247.5° - 270.0°	88	4	4
13	270.0° - 292.5°	91	5	-5
14	292.5° - 315.0°	77	2	-12
15	315.0° - 337.5°	88	1	-6
16	337.5° - 360.0°	83	-4	-8

Model:Ecoled COB IP67 3000k
 Tester:Sergio Carneros
 Temperature:27Deg
 Manufacturer:Luz Negra S.L

Number: 31.104
 Date:2024-08-02
 Humidity:40%
 Remarks:tira flexible de 100cm