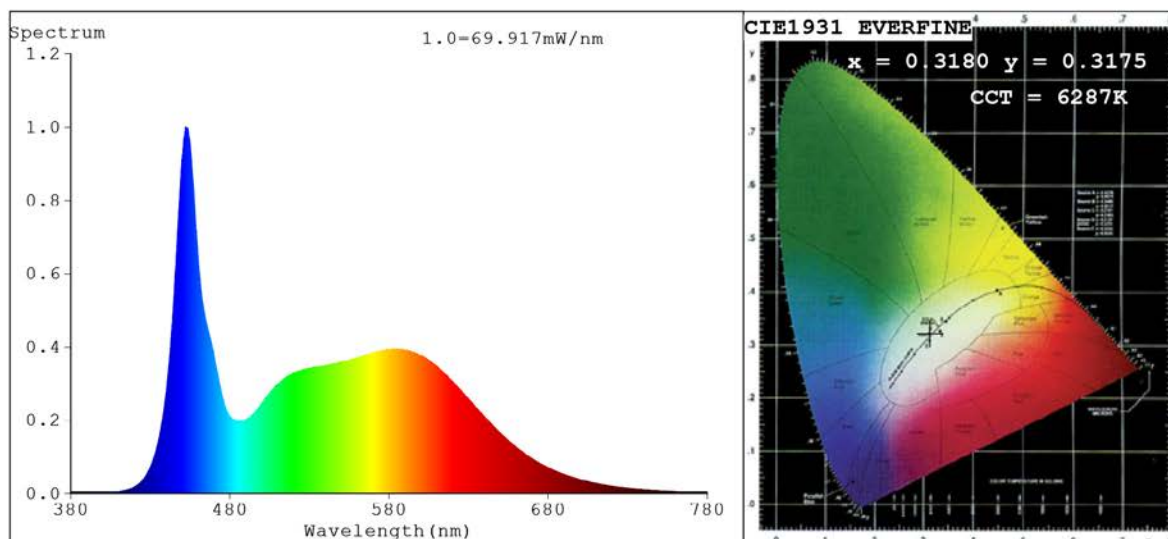


## Spectrum Test Report



### Color Parameters:

Chromaticity Coordinate:  $x=0.3180$   $y=0.3175$   $u'=0.2060$   $v'=0.4628$   
 $CCT=6287K$  ( $Duv=-0.0056$ ) Dominant WL:  $L_d = 476.3nm$  Purity=6.7%  
 Ratio:  $R=15.0\%$   $G=79.0\%$   $B=5.9\%$ ; Peak WL:  $L_p=452.3nm$  FWHM=19.4nm  
 Render Index:  $R_a=87.3$  CRI=81.8 TM30:  $R_f=81$   $R_g=97$   
 $R1 = 88$   $R2 = 93$   $R3 = 93$   $R4 = 87$   $R5 = 87$   $R6 = 86$   $R7 = 88$   
 $R8 = 75$   $R9 = 31$   $R10=82$   $R11=87$   $R12=61$   $R13=91$   $R14=97$   $R15=87$

### Photo Parameters:

Flux = 1750 lm Eff. : 117.80 lm/W  $F_e = 5.816 W$

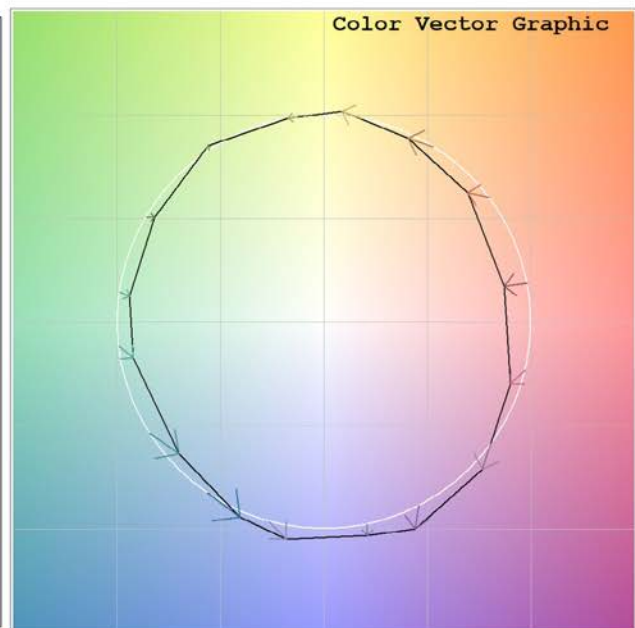
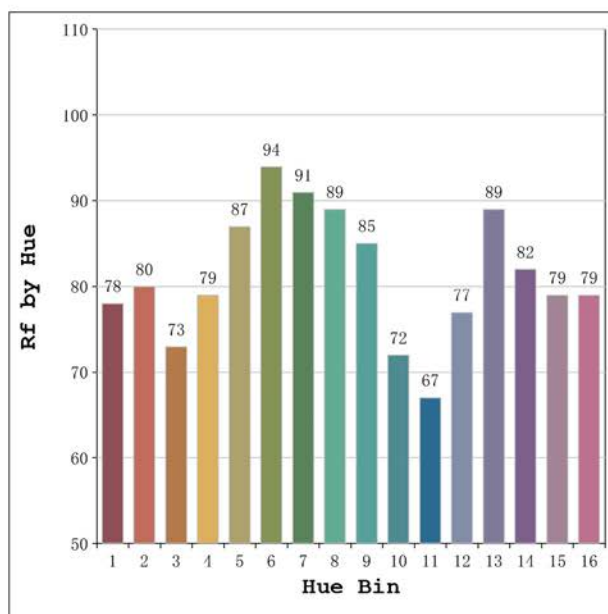
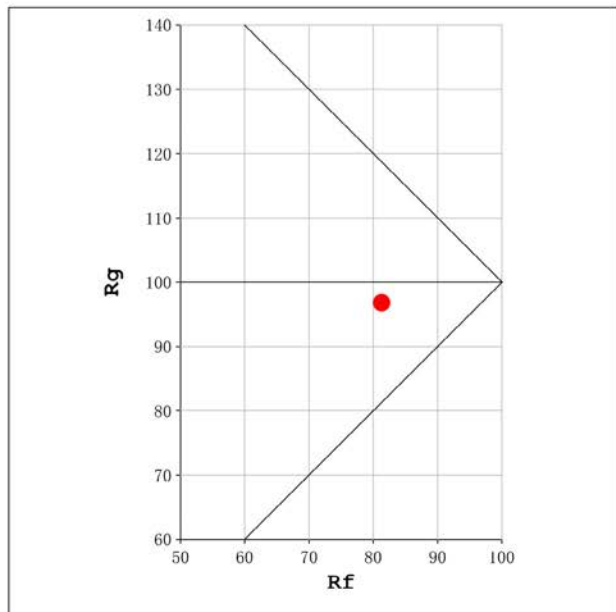
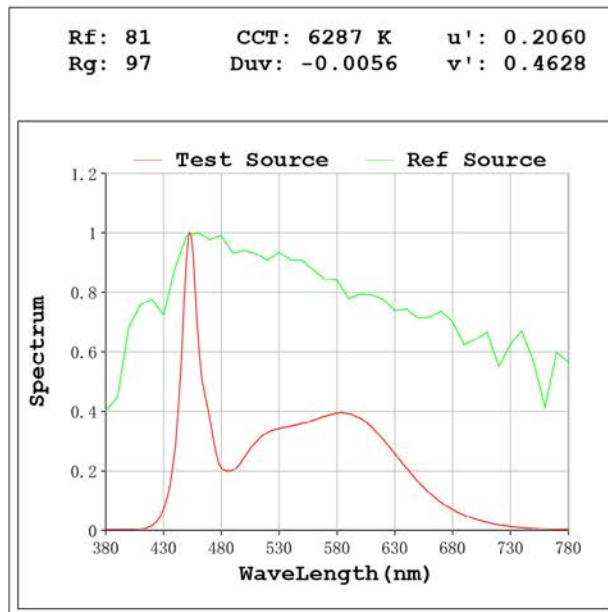
### Electrical parameters:

$V = 230.04 V$   $I = 0.07148 A$   $P = 14.86 W$  PF = 0.9035

Status: Integral T = 605 ms  $I_p = 56833 (87\%)$

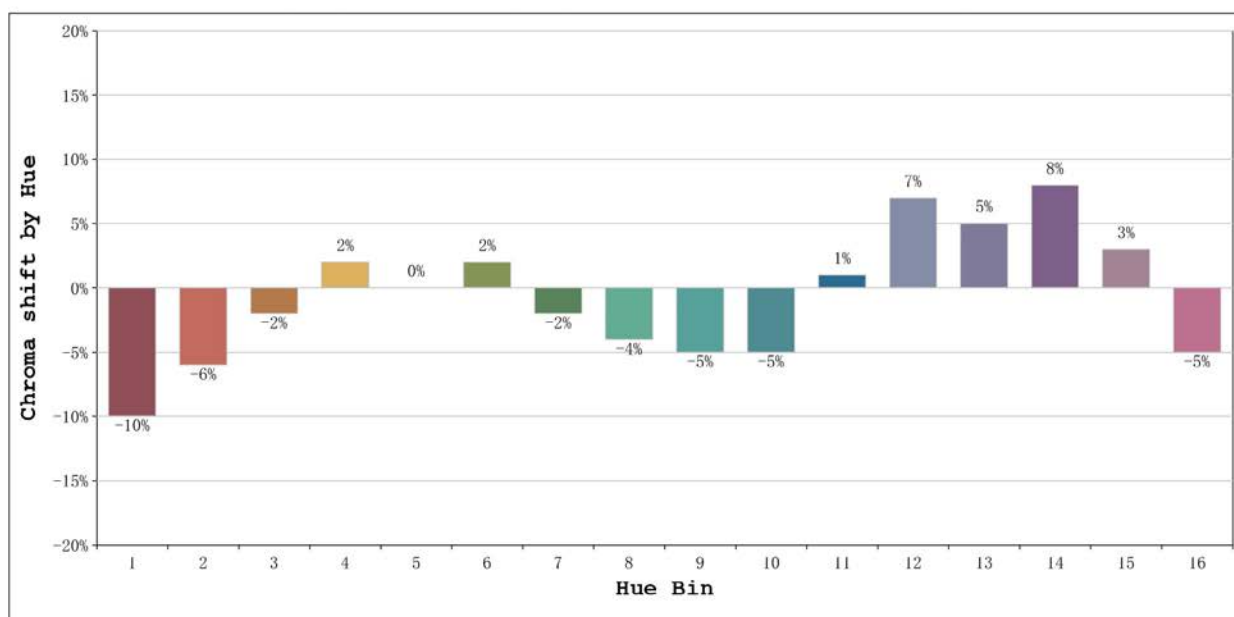
Model: Ecoled Infinity 14 6500K  
 Tester: Sergio Carneros  
 Temperature: 27Deg  
 Manufacturer: Luz Negra S.L

Number: 34.001  
 Date: 2025-01-09 09:50:01  
 Humidity: 40%  
 Remarks: tira flexible de 100cm



Model:Ecoled Infinity 14 6500K  
 Tester:Sergio Carneros  
 Temperature:27Deg  
 Manufacturer:Luz Negra S.L

Number: 34.001  
 Date:2025-01-09 09:50:01  
 Humidity:40%  
 Remarks:tira flexible de 100cm



			Graphic shift(%)	
Hue Bin	Hue Angle	Rf	Chroma	Hue
1	0.0° - 22.5°	78	-10	1
2	22.5° - 45.0°	80	-6	7
3	45.0° - 67.5°	73	-2	13
4	67.5° - 90.0°	79	2	10
5	90.0° - 112.5°	87	0	4
6	112.5° - 135.0°	94	2	0
7	135.0° - 157.5°	91	-2	-1
8	157.5° - 180.0°	89	-4	1
9	180.0° - 202.5°	85	-5	7
10	202.5° - 225.0°	72	-5	16
11	225.0° - 247.5°	67	1	20
12	247.5° - 270.0°	77	7	10
13	270.0° - 292.5°	89	5	0
14	292.5° - 315.0°	82	8	-7
15	315.0° - 337.5°	79	3	-12
16	337.5° - 360.0°	79	-5	-7

Model:Ecoled Infinity 14 6500K  
Tester:Sergio Carneros  
Temperature:27Deg  
Manufacturer:Luz Negra S.L

Number: 34.001  
Date:2025-01-09 09:50:01  
Humidity:40%  
Remarks:tira flexible de 100cm